



Sony Xperia T2 Ultra Dual Rear Facing Camera Replacement

No picture? Replace the back camera.

Written By: Christina Wojaczyk



INTRODUCTION

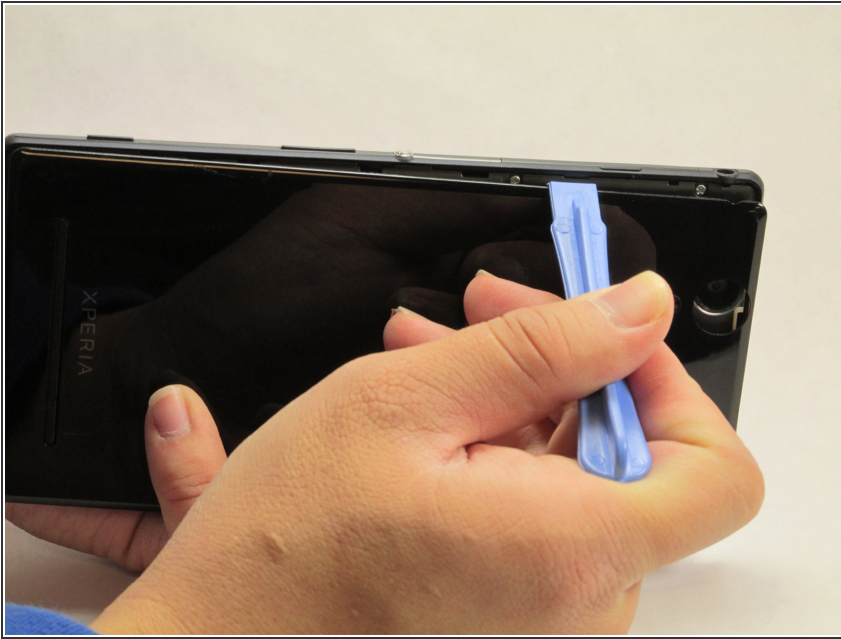
This guide can be used to remove the back camera.



TOOLS:

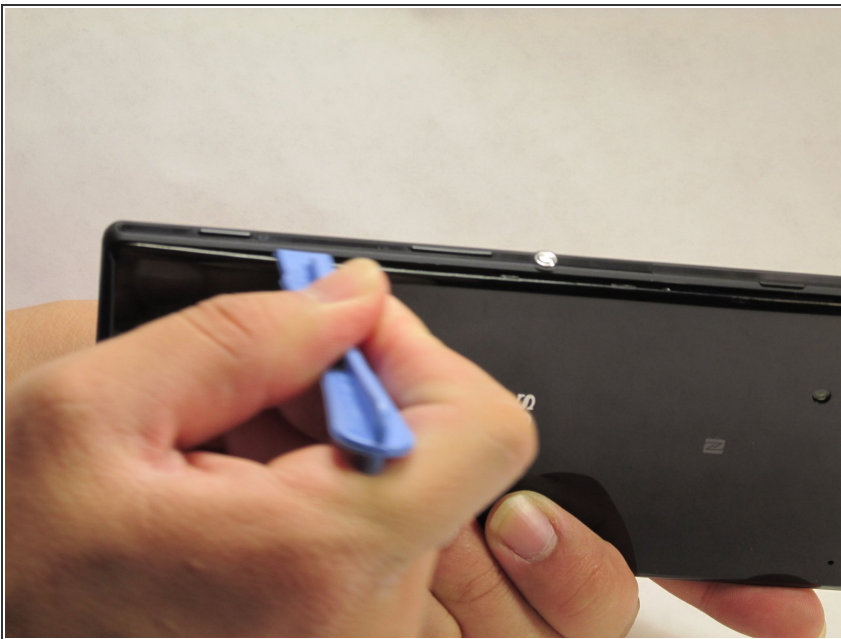
- [Tweezers](#) (1)
 - [iFixit Opening Tools](#) (1)
 - [Phillips #00 Screwdriver](#) (1)
-

Step 1 — Rear Case



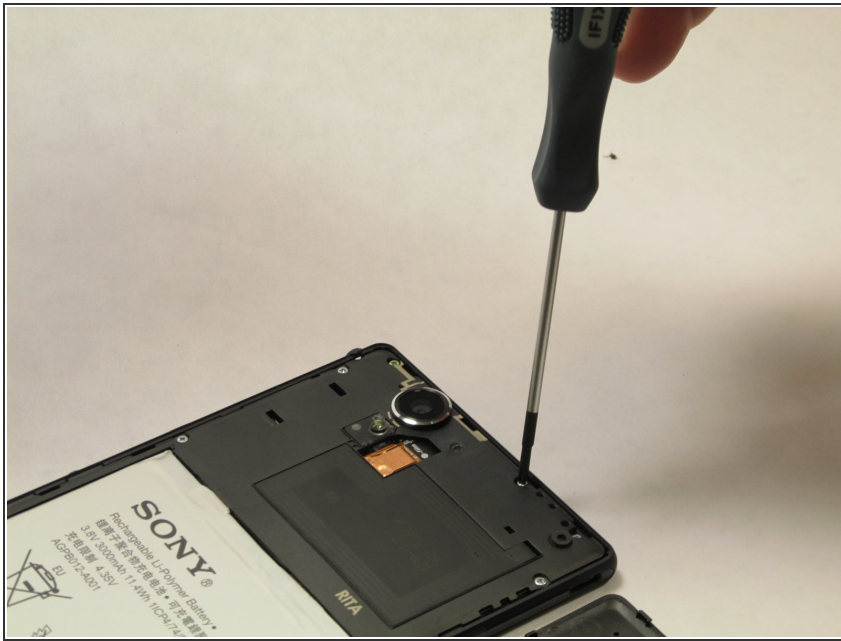
- Using the spudger, pry open the back cover by starting alongside the edge of the back cover.

Step 2



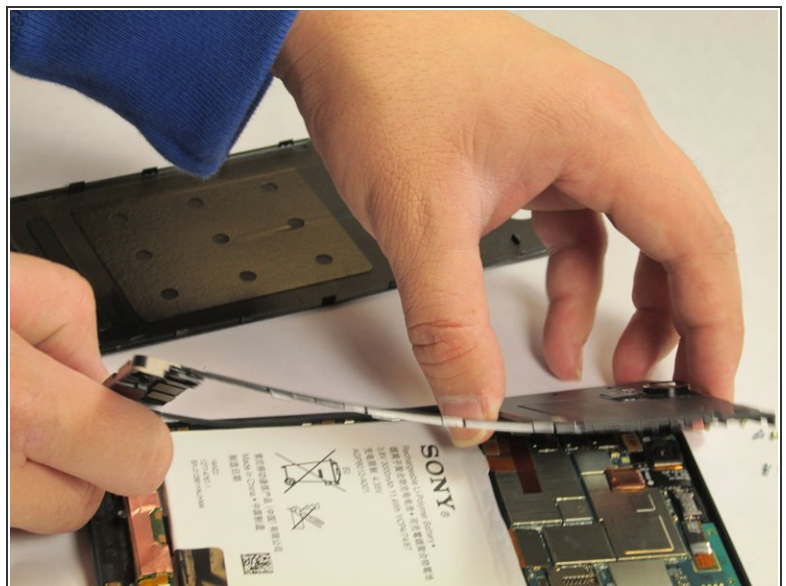
- Once the part of the back cover has been opened up. Slide the spudger to pry completely detach the cover from the phone.

Step 3 — Removing the internal cover



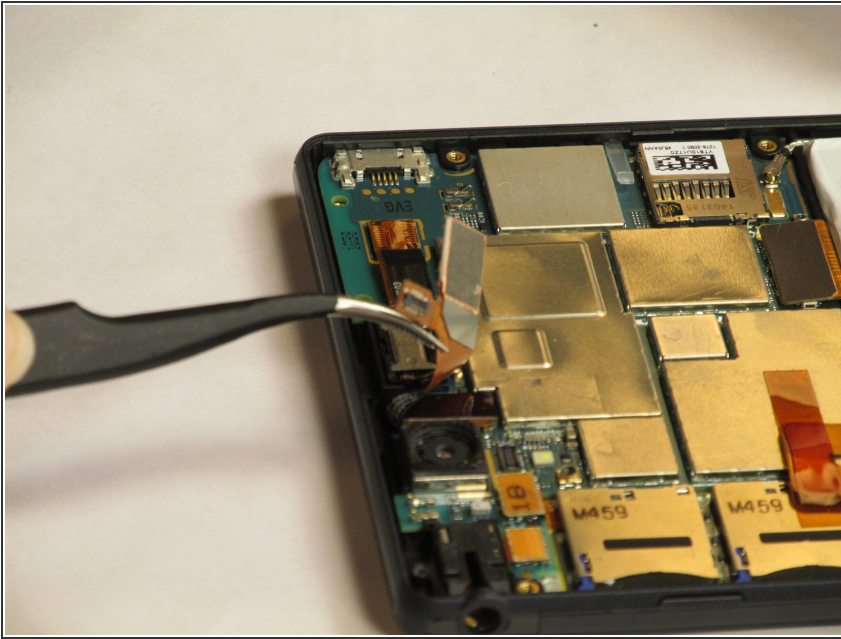
- Using the Phillips #00 Precision screwdriver, take out 8 silver screws (3.15mm) and 5 gold screws (3.9mm) for a total of all the screws attached to the flat plate. 3 of the gold screws are located at the top of the phone and the other 2 screws are located at the bottom of the phone.

Step 4



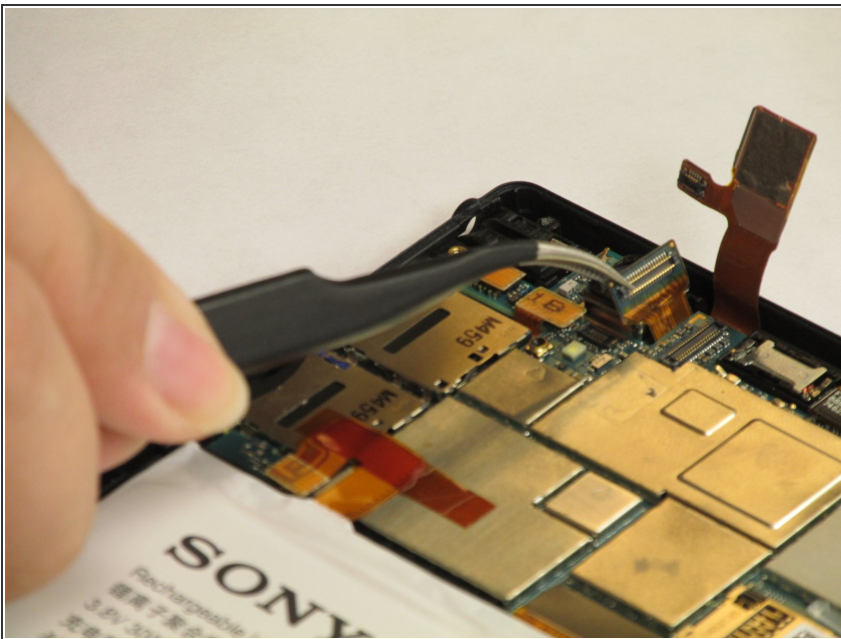
- To remove the internal cover, use the plastic spudger tool and pry the cover from the phone as shown in the picture.

Step 5 — Removing Chip



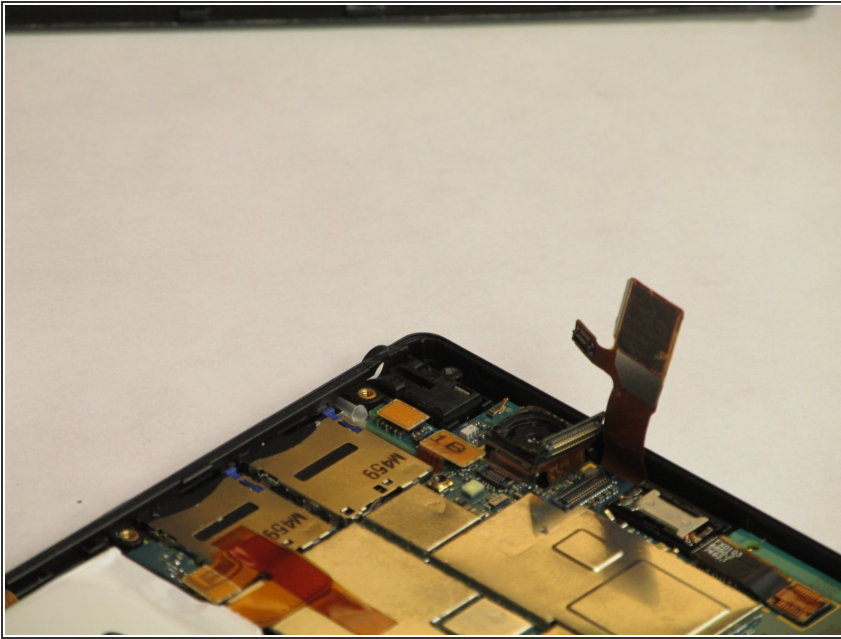
- To take out the back facing camera, flip open the flap labelled 'film' to reveal the chip that connects to the motherboard.

Step 6



- Use the tweezers, carefully pry open the chip for the back facing camera.

Step 7 — Remove back facing camera



- Then using the tweezer, carefully remove the back facing camera component.

To reassemble your device, follow these instructions in reverse order.