



# Alcatel OneTouch Evolve Back Panel Removal

This guide will provide users with the information to remove the back panel of the Alcatel OneTouch Evolve

Written By: Brendan Egan



---

## INTRODUCTION

The back panel is located on the back of the phone and is matte black in color. Removing it will allow you to begin most of your repairs and be able to access most of the internal components of the phone.



### TOOLS:

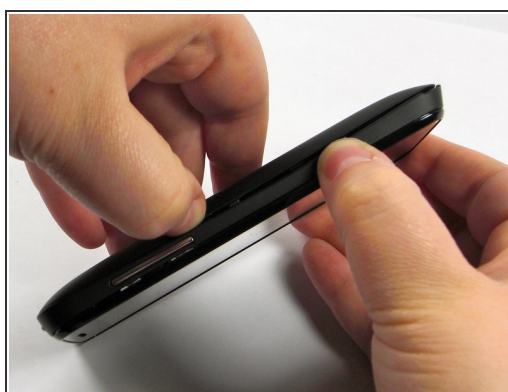
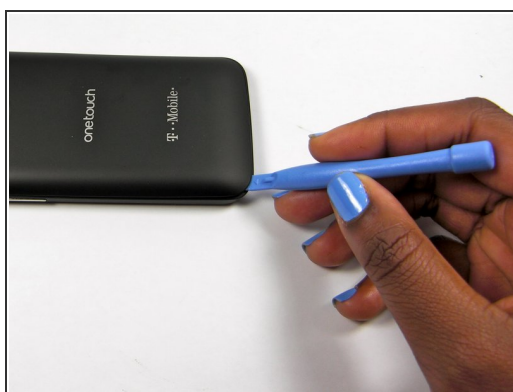
- [iFixit Opening Tools](#) (1)
-

## Step 1 — Locate the access tab



- This will be an opening with enough space to insert the flat head of the plastic opening tool.
- It will be located on the bottom right of the phone

## Step 2 — Place the flat head end of the pry tool into the tab



- Rotate the pry tool 90 degrees until the panel lifts up.
- With your thumb nail, lift the rest of the panel up around the perimeter of the phone.

To reassemble your device, follow these instructions in reverse order.