



Xbox 360 Wireless Controller Logic Board Replacement

Get back to your gaming by replacing your Xbox...

Written By: Brett Hartt



INTRODUCTION

Get back to your gaming by replacing your Xbox 360 wireless controllers logic board.

TOOLS:


Spudger (1)
T8 Torx Security Bit Screwdriver (1)
Tweezers (1)

PARTS:

Xbox 360 Wireless Controller
Motherboard (1)

Step 1 — Battery



- Depress the battery release button on the top of the controller.
 - Remove the battery holder from the controller.
-  The standard option for Xbox 360 Wireless Controllers Battery Packs is AA batteries. A rechargeable battery is also available, but both battery options are removed from the controller in the same way.

Step 2 — Rear Case



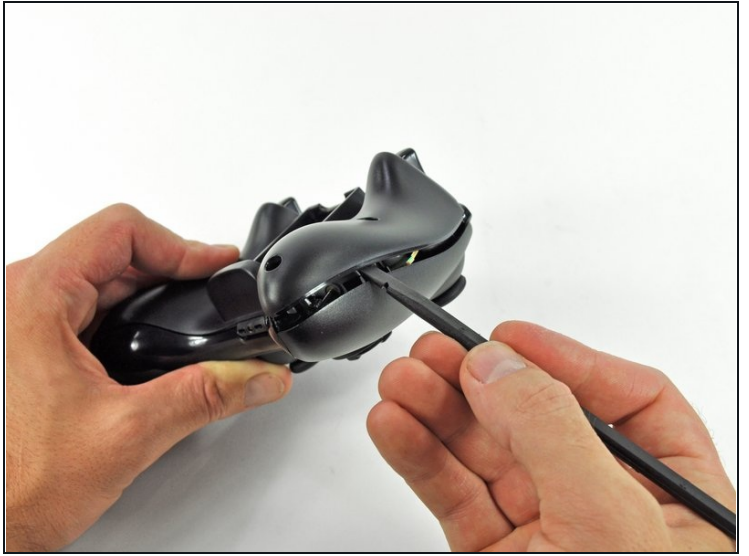
- Use a pair of tweezers to peel the barcode sticker from the battery compartment.

Step 3



- Remove the seven 9.3 mm T8 Security Torx screws securing the rear case to the front case.

Step 4



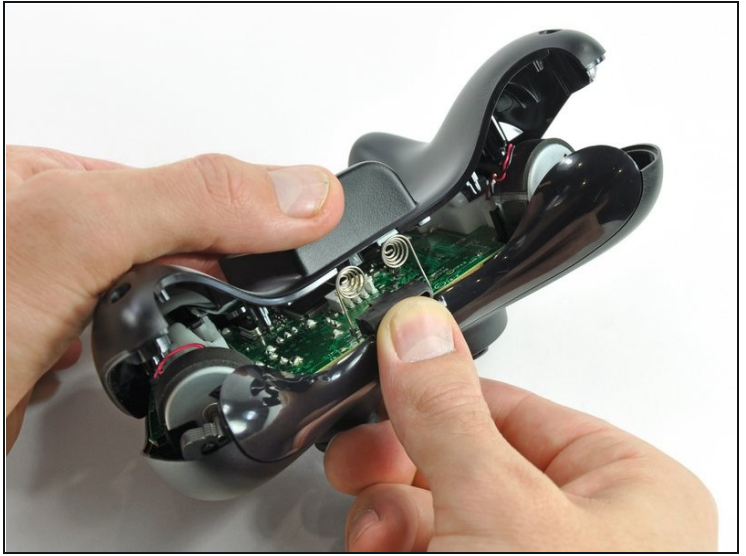
- Insert a [Spudger](#) between the front and rear cases along the left edge of the controller.
- Rotate the spudger toward the front of the controller, prying the two cases apart.

Step 5



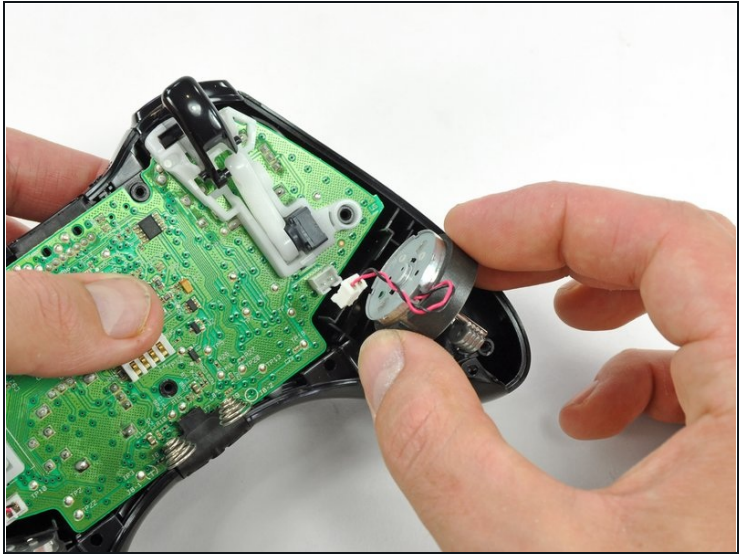
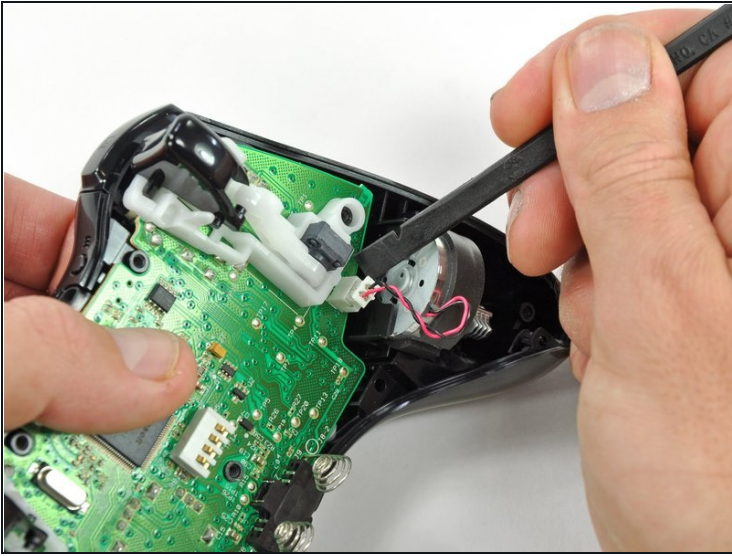
- Insert a spudger between the front and rear cases, near the headphone jack.
- Rotate the spudger toward the front of the controller to pry the two cases apart.

Step 6



- Grasp the controller by the battery compartment and the headphone jack.
- Lift the battery compartment away from the headphone jack, separating the rear case from the front case and logic board.
- ☑ The battery contact springs are held in place by slots in the battery housing in the rear case. Be sure to realign them properly during reassembly.

Step 7 — Vibration Motors



- Use the flat end of a spudger to remove the vibration motor cable, moving it upward from its socket on the logic board.
- Lift the vibration motor out of the front case.

Step 8



- Remove the vibration motor from the other side of the controller using the same method previously described.

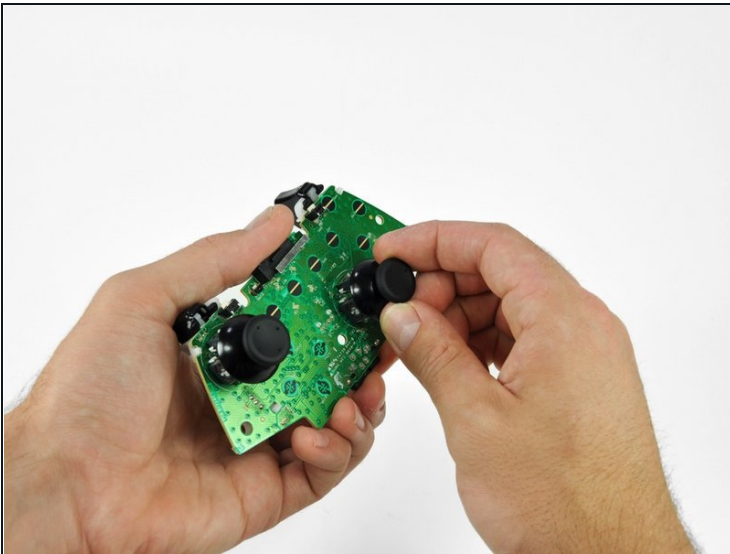
① The **left motor** has significantly more counterweight than the right motor.

Step 9 — Logic Board



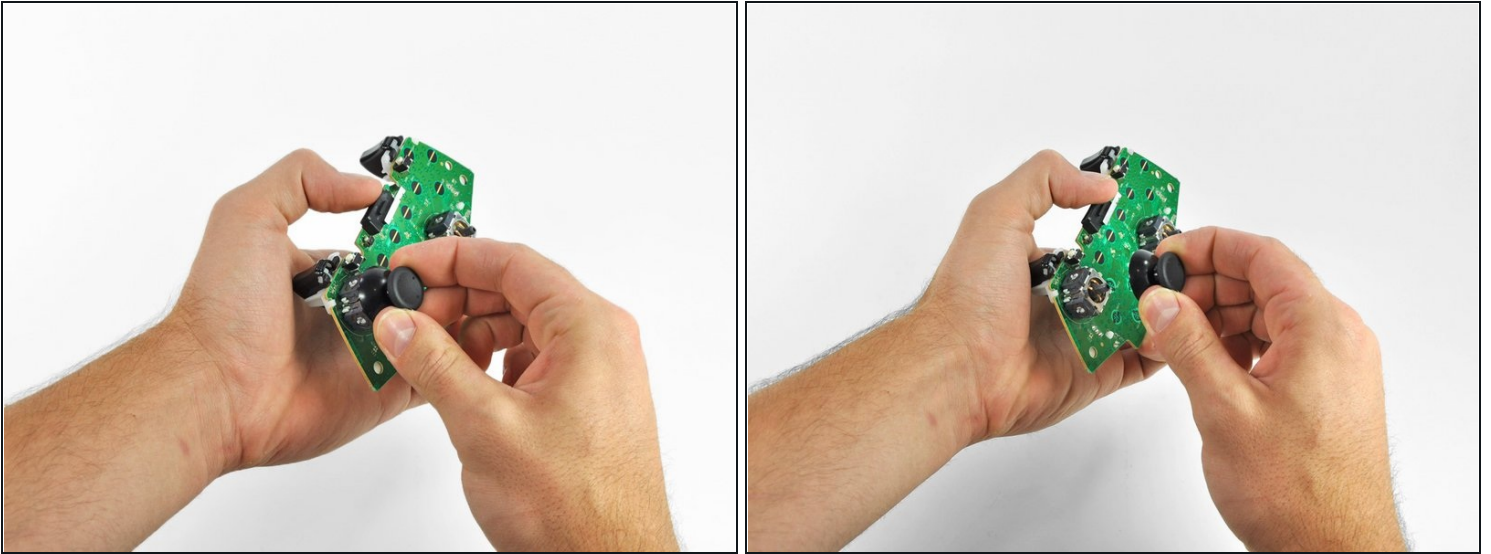
- Lifting from the headphone jack and power plug, remove the logic board from the front case.

Step 10 — Analog Stick Covers



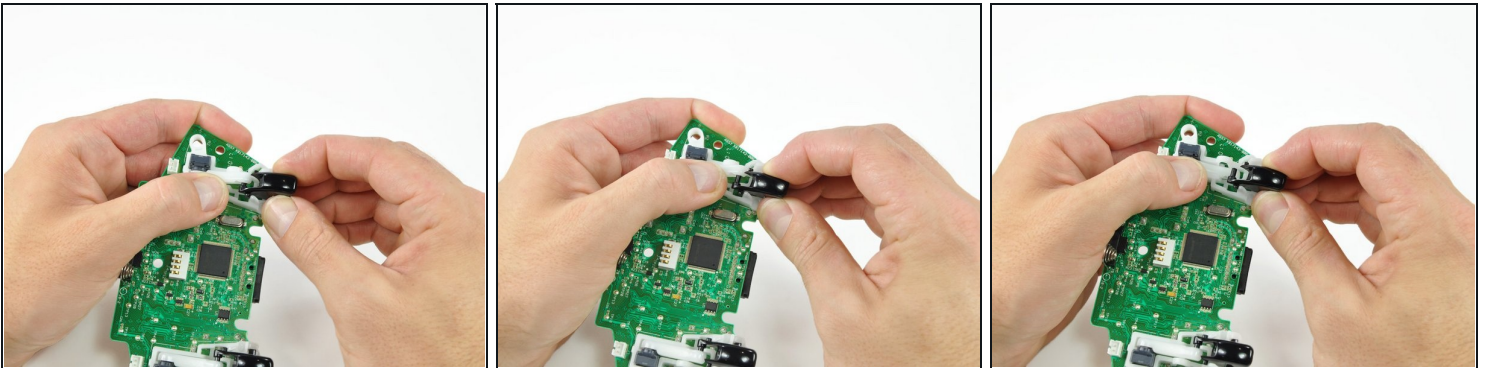
- Grasp the right analog stick and pull the cover off its mount peg.

Step 11



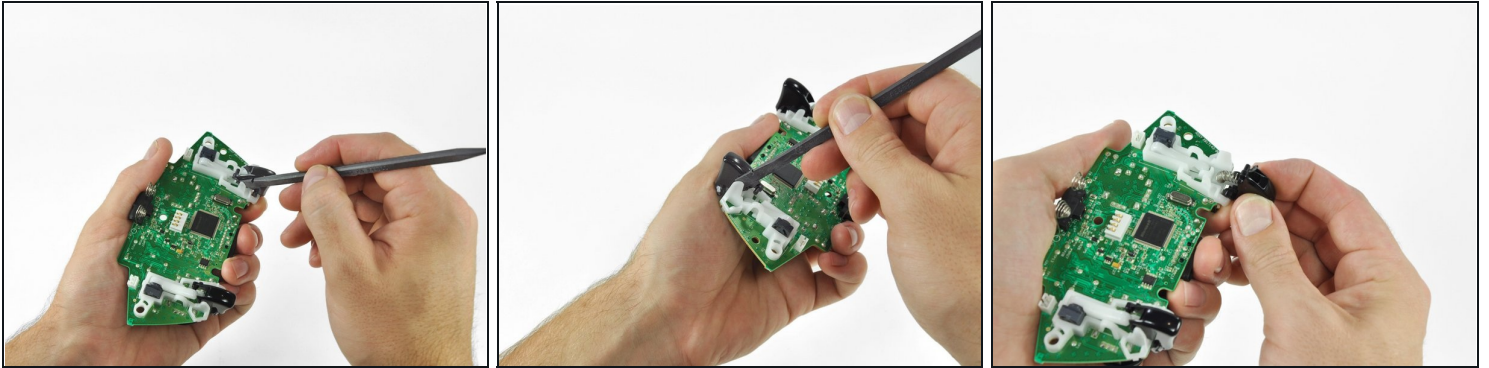
- Remove the left analog stick cover using the same procedure previously described.

Step 12 — Triggers



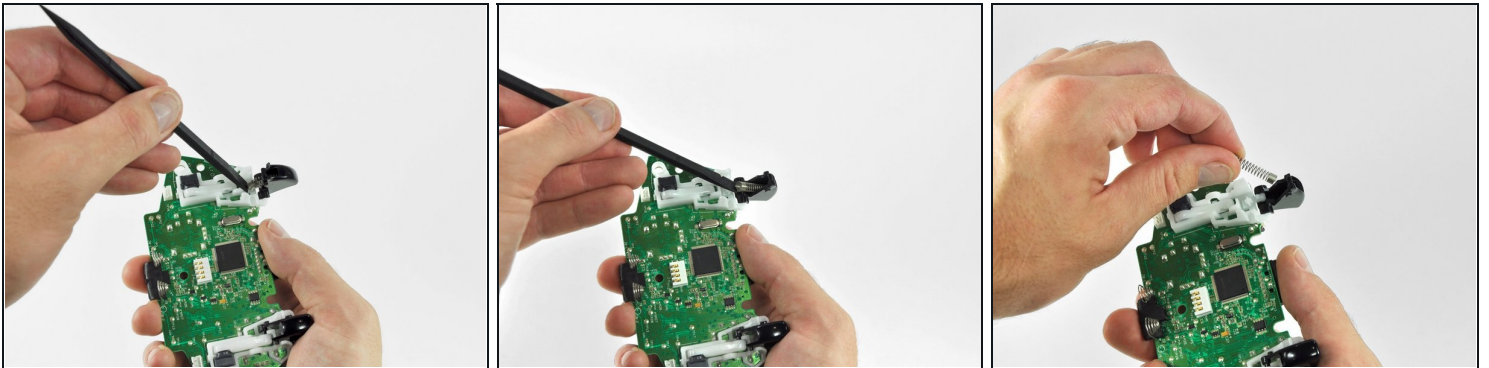
- Using your thumb and forefinger, push the left trigger toward the right side of the controller. Simultaneously push the trigger control arm in the opposite direction.
- ☑ The trigger has a peg that fits into a slot in the trigger arm. Be sure to push far enough so that the peg clears the slot.
- Push the trigger arm downward.

Step 13



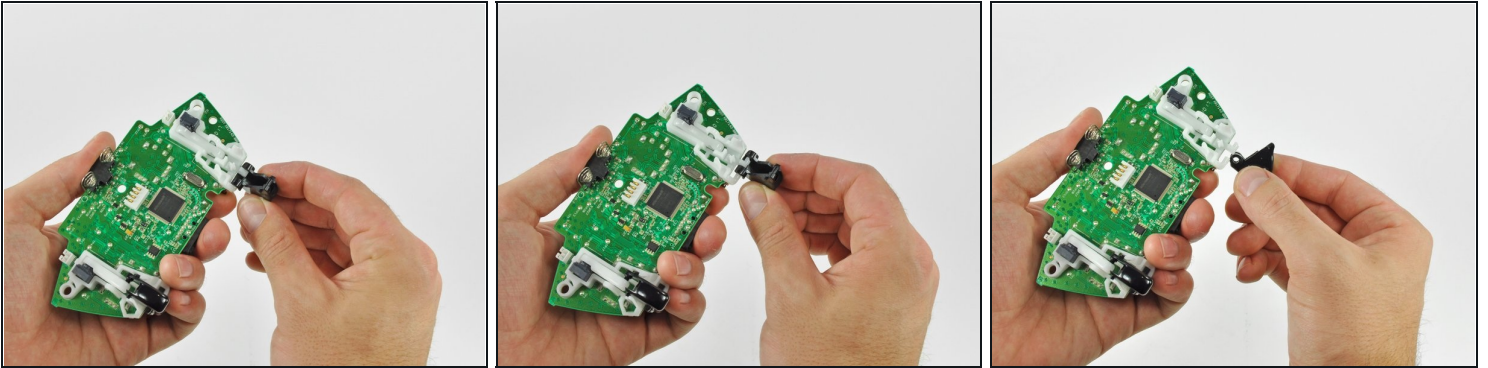
- Insert the edge of a spudger in between the trigger and the trigger assembly near the left edge. Pry the housing away from the catch on the trigger.
- Using the previously described technique, pry the housing on the right edge away from the trigger.
- Rotate the trigger away from the logic board, past its housing.

Step 14



- Using a spudger, pry the trigger spring off its peg on the trigger housing.
- Pull the trigger spring out of the trigger.

Step 15



- Slide the trigger toward the right side of the logic board, and rotate it clockwise.
- Remove the right trigger from the logic board.
- ① To remove the left trigger from the logic board, follow the procedure previously described for the right trigger.

To reassemble your device, follow these instructions in reverse order.