



# DJI Phantom 2 Teardown

DJI Phantom 2 + Gopro Hero 4 camera + Zenmuse H3-3D gimbal + FPV Transmitter

Written By: Jose Gustavo Abreu Murta



## INTRODUCTION

The Phantom 2 is DJI's revision to its original ready-to-fly quadcopter. The DJI Phantom, better known as the iPod of drones, is a quadcopter marketed primarily as an aerial photography platform for people with less R/C flight experience. Although the Phantom comes preassembled in a clean, white, plastic frame, the quadcopter contains similar hardware to other hobbyist drones, but in a more condensed package. Check out this guide for a detailed look at the propulsion, control, power, and video systems of this powerful tool.



### TOOLS:

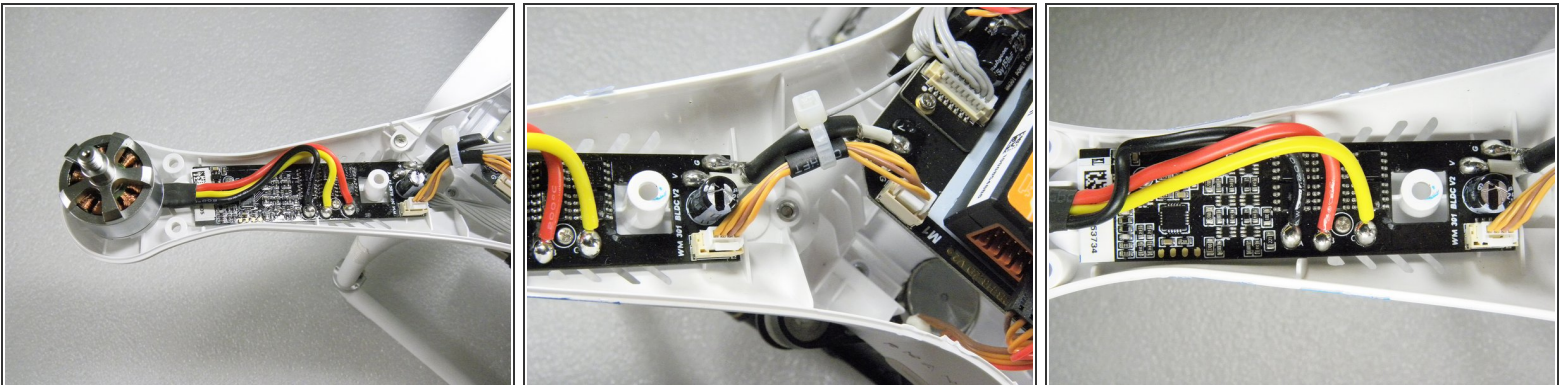
- [Pro Tech Toolkit](#) (1)

## Step 1 — Brushless DC Motor



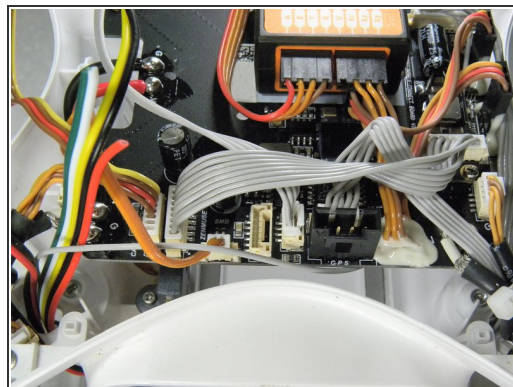
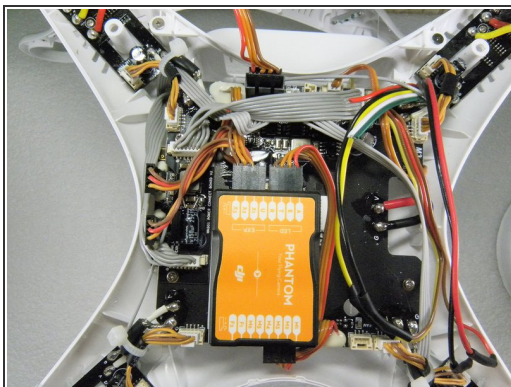
- Brushless AC Motor (DJIPV-06 DJI 2212)
- Bottom - three color leds. Remove only some screws

## Step 2 — ESC - Electronic Speed Control



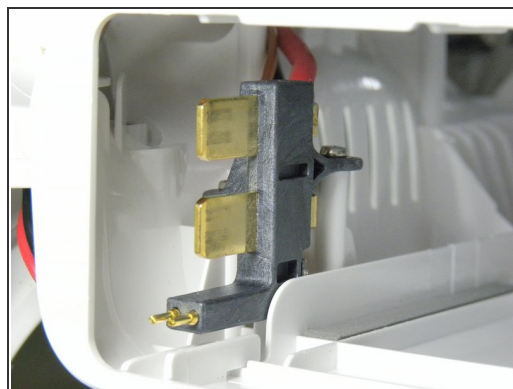
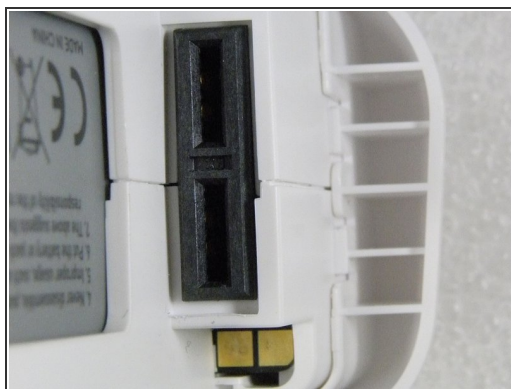
- ESC - Electronic Speed Control

## Step 3 — Remote Control and Main Control Circuit



- Remote Control and Main Control Circuit

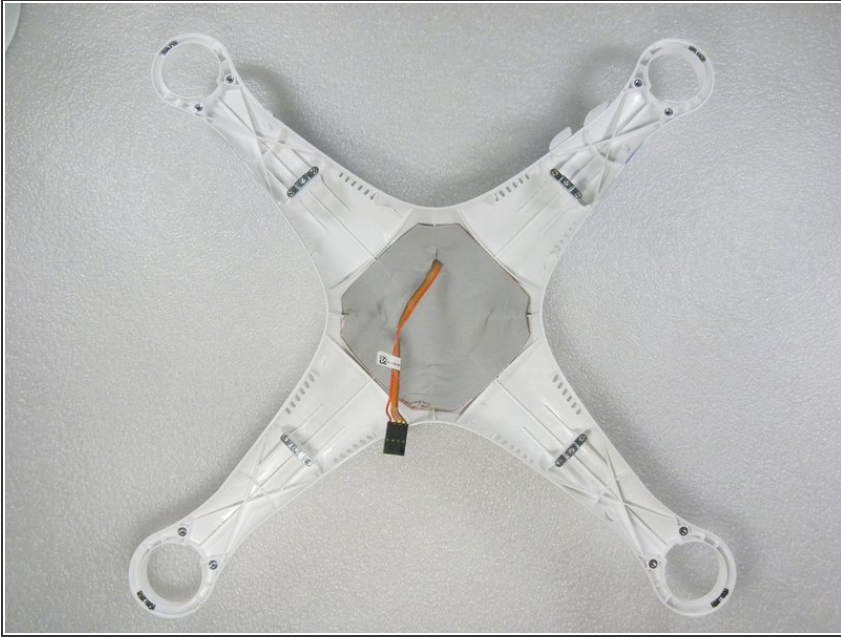
## Step 4 — Intelligent Battery



- Intelligent Battery - LIPO - 11,1V - 5200mAh

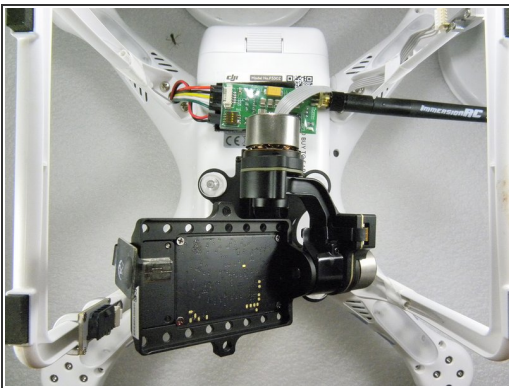


## Step 5 — GPS circuit and cable



- GPS circuit and cable

## Step 6



- Bottom view : Zenmuse H3-3D Gimbal and FPV transmitter
- FPV transmitter
- Gimbal's Brushless DC micro motor