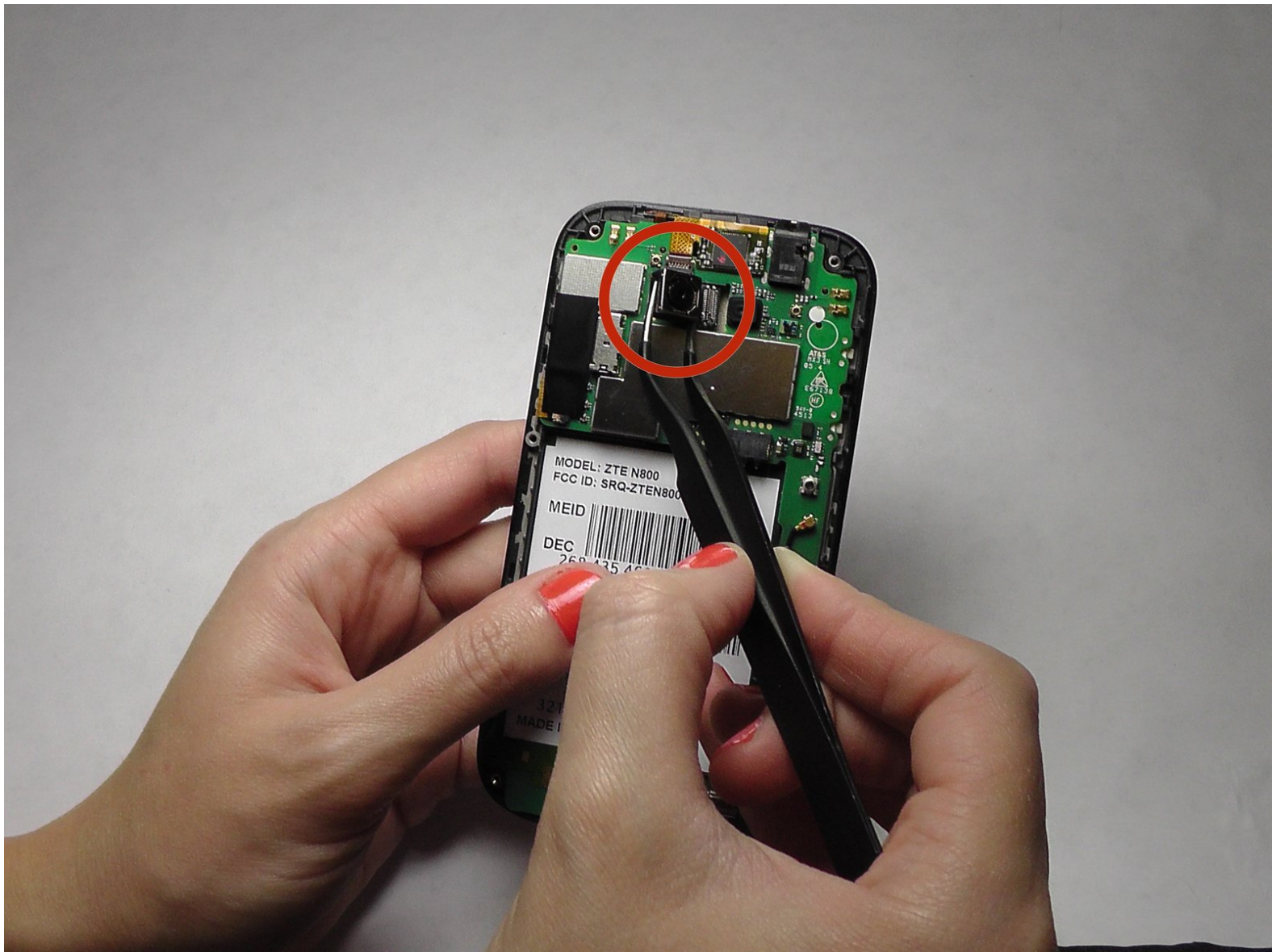




# ZTE Awe Camera Replacement

Replace your camera so you can take beautiful photographs and never miss a moment.

Written By: Jennifer DeMeo



---

## INTRODUCTION

This guide will show you how to replace the camera in case it breaks or no longer works.

---

### TOOLS:

- [Tweezers](#) (1)
  - [Phillips #00 Screwdriver](#) (1)
  - [iFixit Opening Tools](#) (1)
  - [Essential Electronics Toolkit](#) (1)
-

## Step 1 — Remove the back cover



- Remove the back cover of the phone to expose the phone's mid-frame.

## Step 2 — Remove battery



- Pry the battery up and out of the phone.

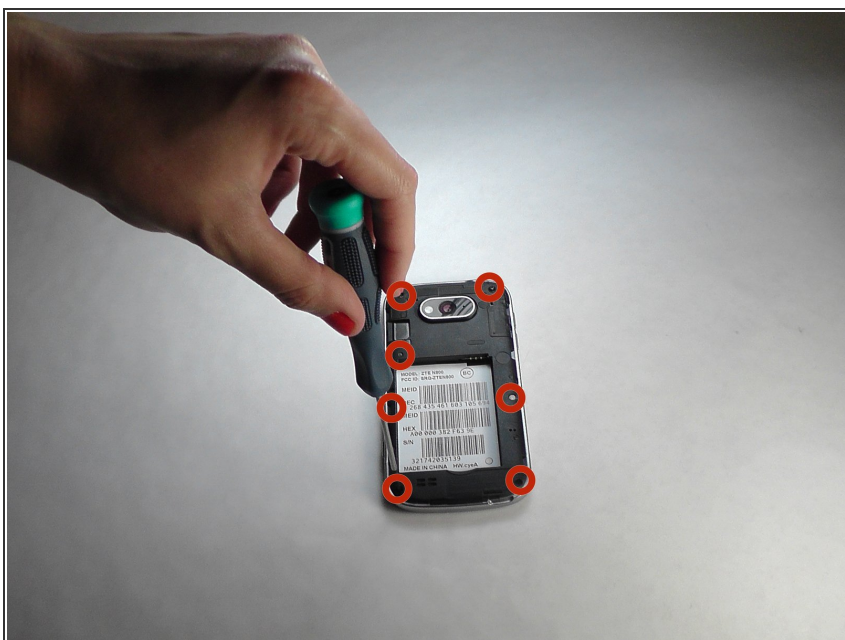


### Step 3 — Remove the battery



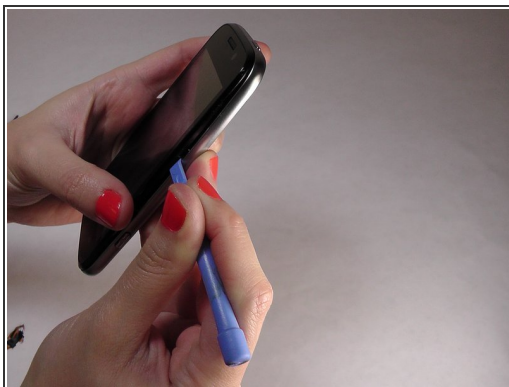
- Lift the battery out of the phone.

### Step 4 — Unscrew the mid frame



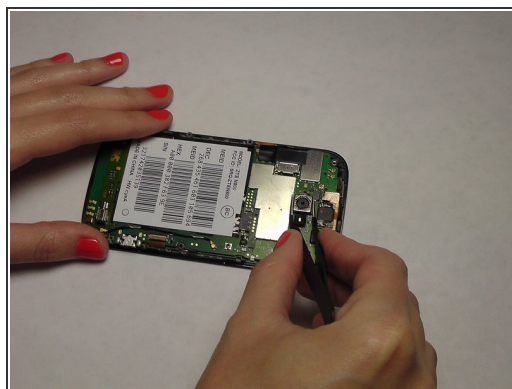
- Use the Phillips Head 00 screw driver to unscrew the seven 0.1mm screws along the perimeter of the phone's mid frame.

## Step 5 — Separate the mid frame and the digitizer



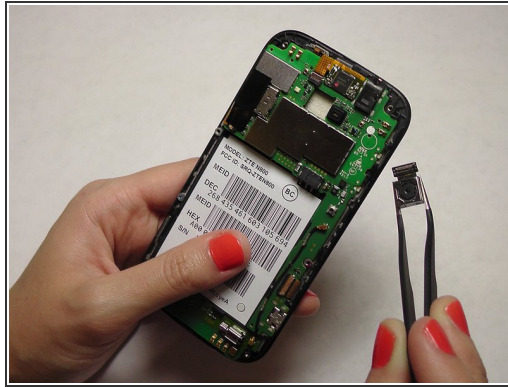
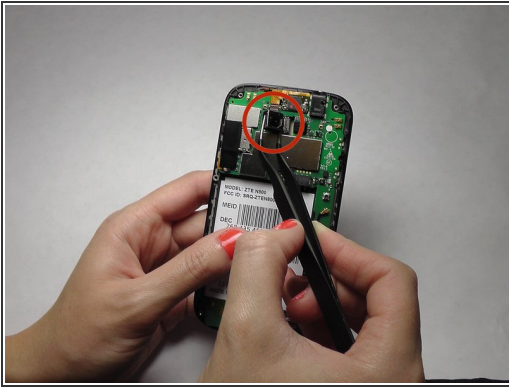
- Wedge the flat end of the spudger between the mid frame and the digitizer.

## Step 6 — Expose the motherboard



- Gently pry the mid frame away from the rest of the phone to expose the motherboard.

## Step 7 — Remove the camera



- Use the tweezers to grip the back facing camera. Gently pull until the camera is completely removed from the motherboard.

To reassemble your device, follow these instructions in reverse order.