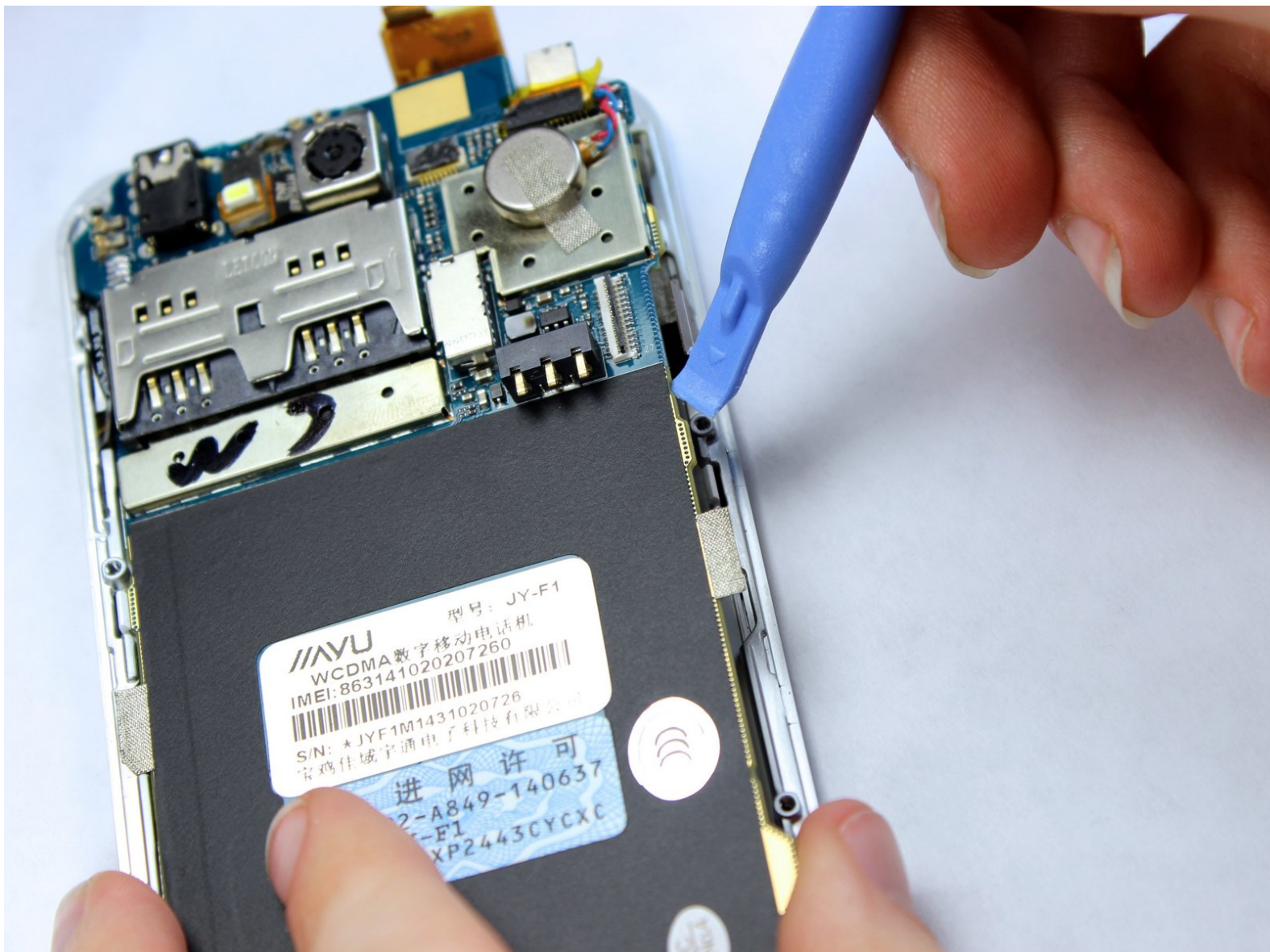




JIAYU F1 Motherboard Replacement

Replace the Motherboard in your JIAYU F1.

Written By: Delilah



INTRODUCTION

This guide will provide instructions on how to replace the motherboard.



TOOLS:

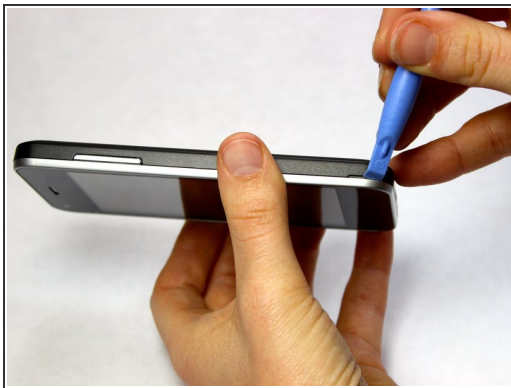
- [Spudger](#) (1)
 - [iFixit Opening Tools](#) (1)
 - [Phillips #00 Screwdriver](#) (1)
 - [Precision Tweezers Set](#) (1)
 - [iFixit Opening Picks set of 6](#) (1)
-

Step 1 — Turn Off the Phone



- Turn the phone off by holding down the power button located on the top of the phone.

Step 2 — Remove the Back Case



- Find the small indentation at the bottom right of the phone and pry open the back case of the phone using your fingernail or small plastic opening tool.
- Gently remove the back case completely from the phone.

Step 3 — Remove the Battery



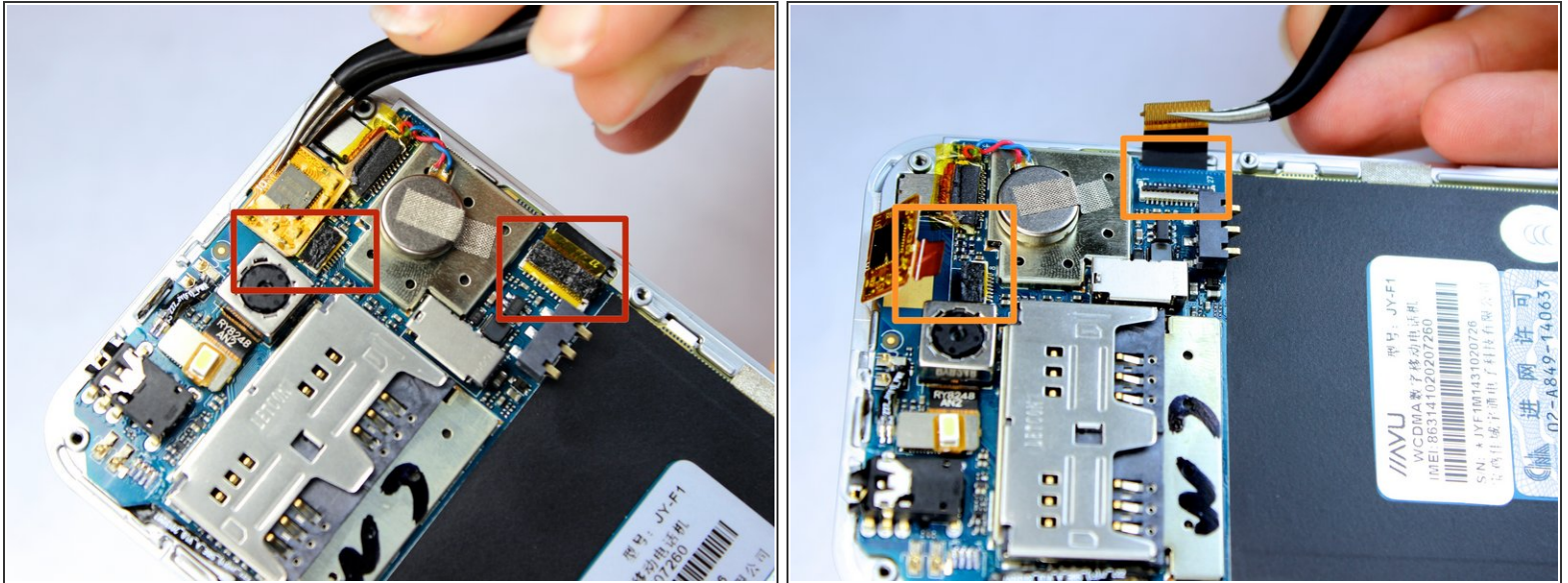
- Insert a fingernail or the small plastic opening tool into the recess in the bottom center of the battery and lift upward.
 - Remove the battery from the phone.
- i** *When replacing the battery, align the copper ports on the top right of the battery with the corresponding ports in the battery cavity.*

Step 4 — Remove the Interior Midframe Assembly



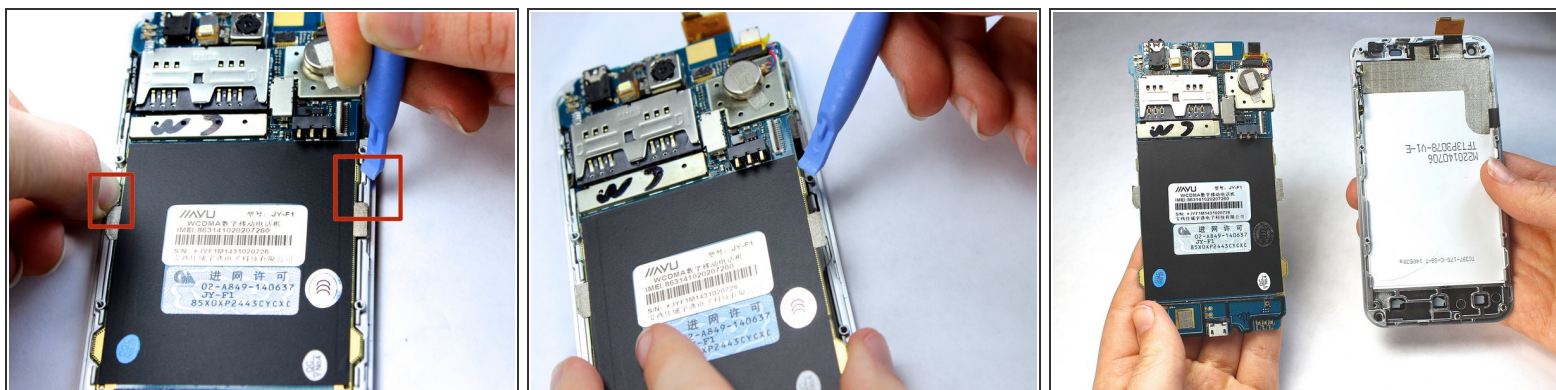
- With the phone lying face down, remove the nine 3 mm Phillips #00 screws from the midframe.
 - Gently run a plastic opening tool down along the left and right sides of the phone to separate the black midframe assembly from the silver display casing.
 - Carefully remove the midframe assembly from the display casing by pulling up and away from the phone.
- i** *The motherboard is housed between the screen/display casing and the midframe assembly. Removal of the screen is not necessary to access the motherboard.*

Step 5 — Motherboard Assembly



- Using a precision tweezer, remove the protective stickers from the connectors.
- Using a precision tweezer or spudger, carefully slide the indicated connectors out from their ports on the motherboard.

Step 6 — Removing the Motherboard



- Locate the two white clips along the edge of the phone that hold the motherboard in place.
 - Using a finger or plastic opening tool, pull the clips away from the motherboard and hold the clips back.
 - Wedge a plastic credit card or opening pick underneath the motherboard to separate the motherboard away from the display casing.
 - Carefully lift the motherboard upward, making sure any remaining tape connectors are detached.
- i** *Tip: Use one finger to hold one clip open and a small plastic opening tool to hold the other clip open while simultaneously prying the motherboard from the display case (see photo 1)*

To reassemble your device, follow these instructions in reverse order.