



# Motorola Droid Mini Battery Replacement

This guide will show you how to replace the battery in your Motorola Droid Mini.

Written By: Arielle



## INTRODUCTION

The battery is responsible for most of your phone's functions. When the battery malfunctions, the phone may not function properly, and needs to be replaced.

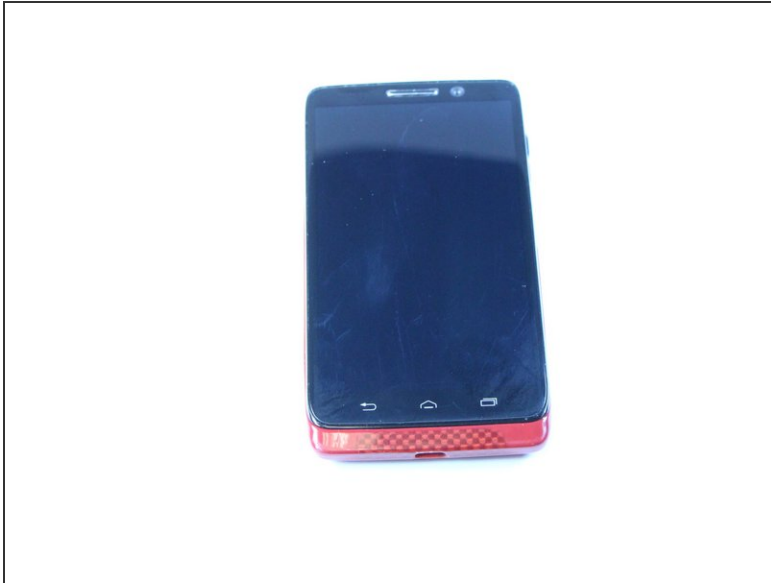
If your battery is swollen, [take appropriate precautions](#).



### TOOLS:

- [T5 Torx Screwdriver](#) (1)
  - [Tweezers](#) (1)
  - [iFixit Opening Tool](#) (1)
-

## Step 1 — Back Case



- Pull out the volume keys using the iFixit opening tool.

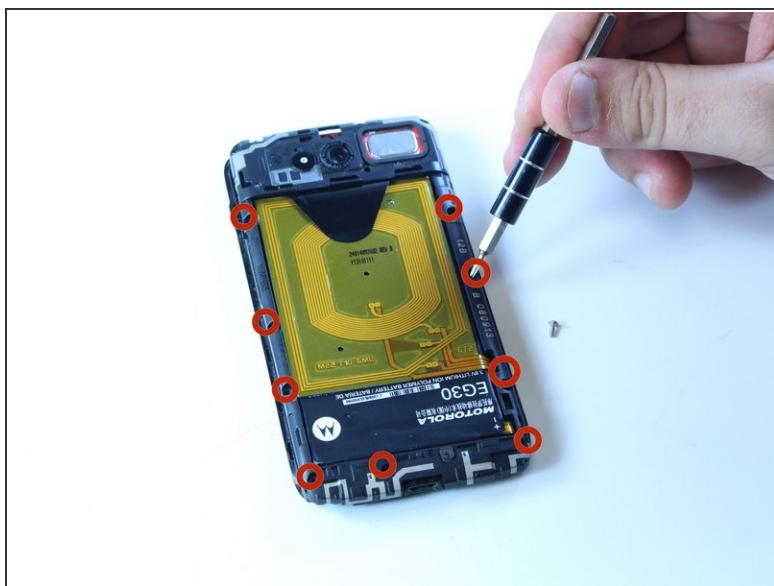
## Step 2



- Pry off the back case gently using the iFixit opening tool.

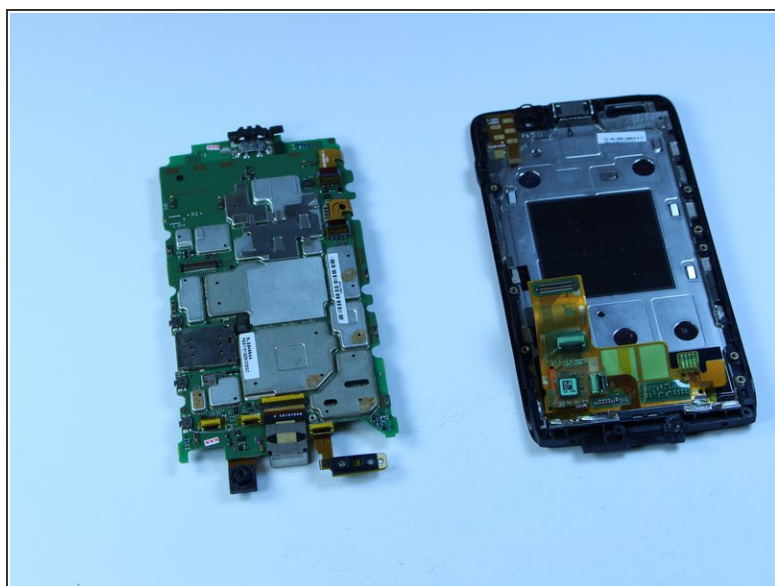
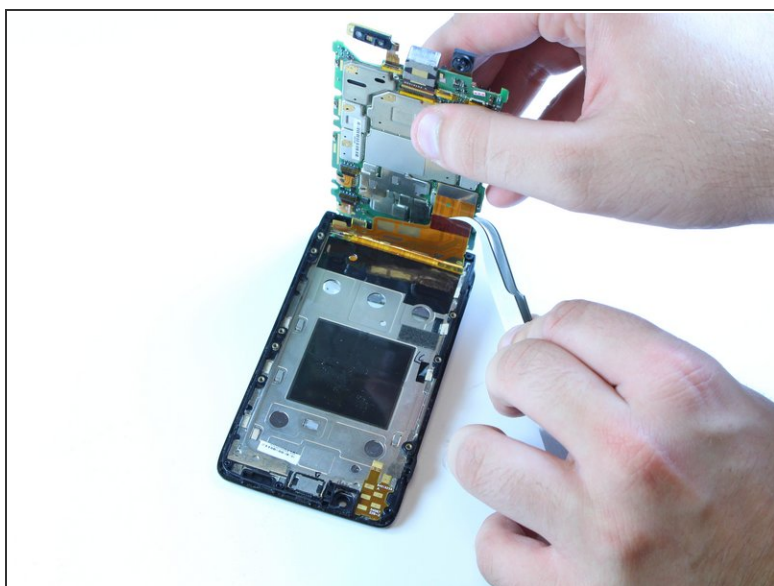
- ⓘ Make sure to go around the entire perimeter of the case.

## Step 3 — Battery



- Use the T5 screw head to unscrew the 9 silver screws from the housing frame.
- Carefully separate the housing frame from the motherboard.

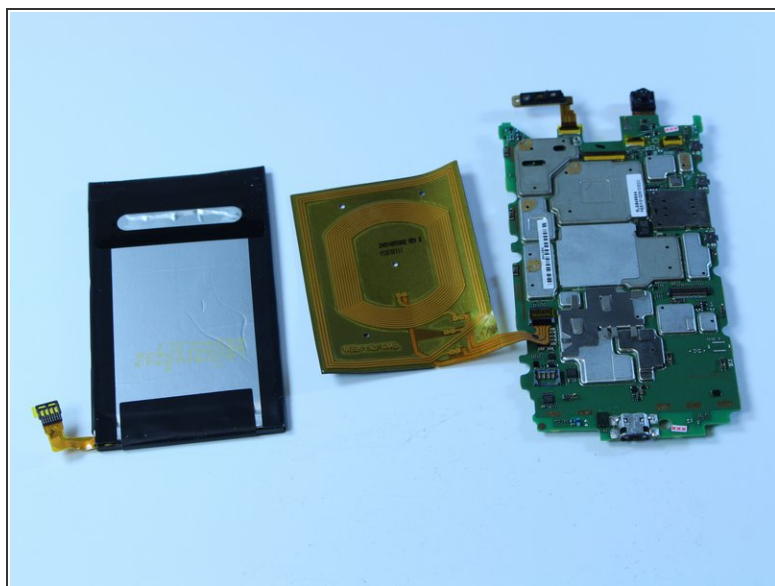
## Step 4



- Carefully use the tweezers to separate the motherboard from the screen.



## Step 5



**⚠** Carefully peel back the orange adhesive from the battery. Make sure to remove all the adhesive attaching the battery to the motherboard.

- Use the black triangular tab to pull battery completely off the motherboard.

To reassemble your device, follow these instructions in reverse order.