



# Sony Xperia M2 Touchscreen Replacement

Sony Xperia M2 Touchscreen Replacement

Written By: ZFix



# INTRODUCTION

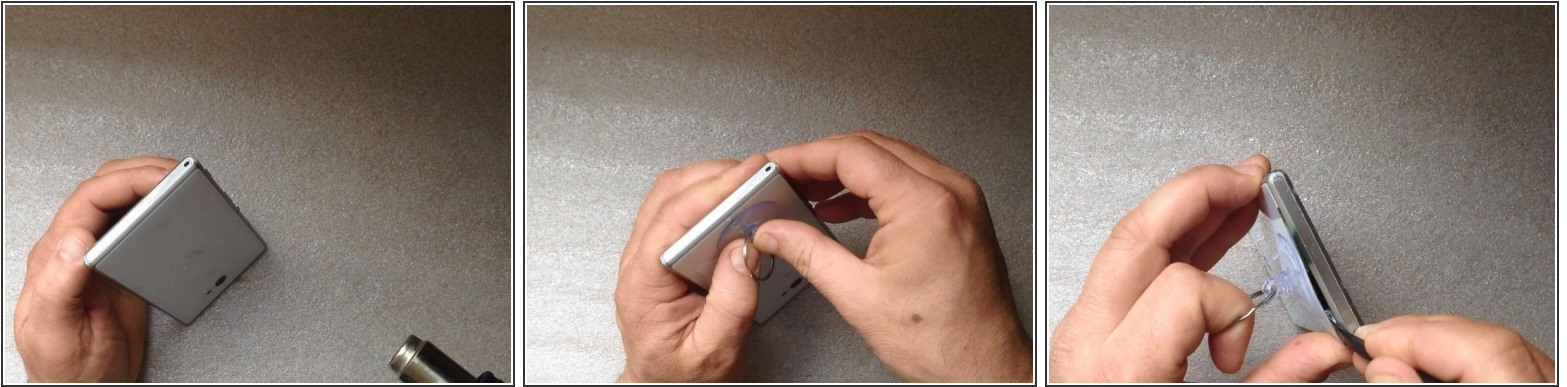
How to disassemble / take apart Sony Xperia M2 and change the Touchscreen / Glass / Digitizer and/or the LCD Display.




## TOOLS:

- [Phillips #0 Screwdriver](#) (1)
  - [iFixit Opening Tools](#) (1)
  - [Suction Handle](#) (1)
  - [Spudger](#) (1)
-

## Step 1 — Rear Cover



- Warm the Back Cover. You can use a hairdryer.

 Be careful, the Cover is plastic.

- Use a small suction cup and plastic tools for separating the Rear panel.
- Before installing the new cover, you must clean the phone from the old adhesive tape and install a new one if your spare part has come without double sided adhesive tape.

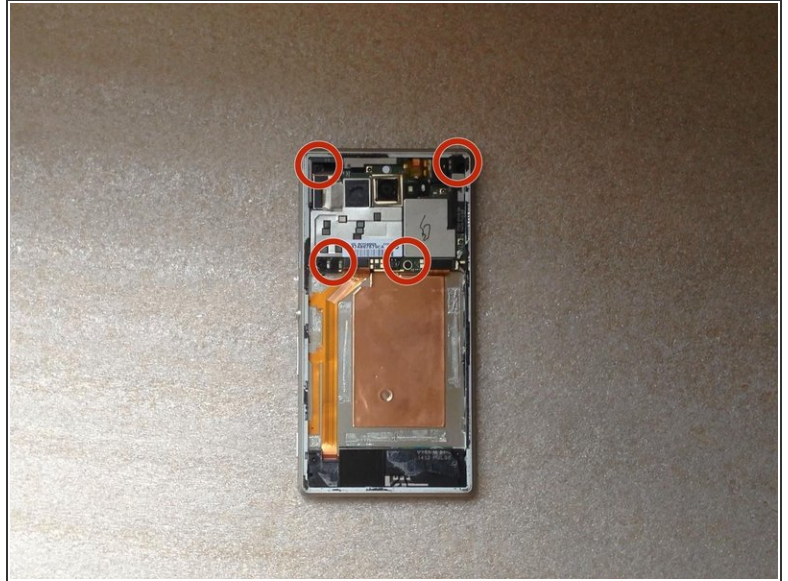


## Step 2 — Battery



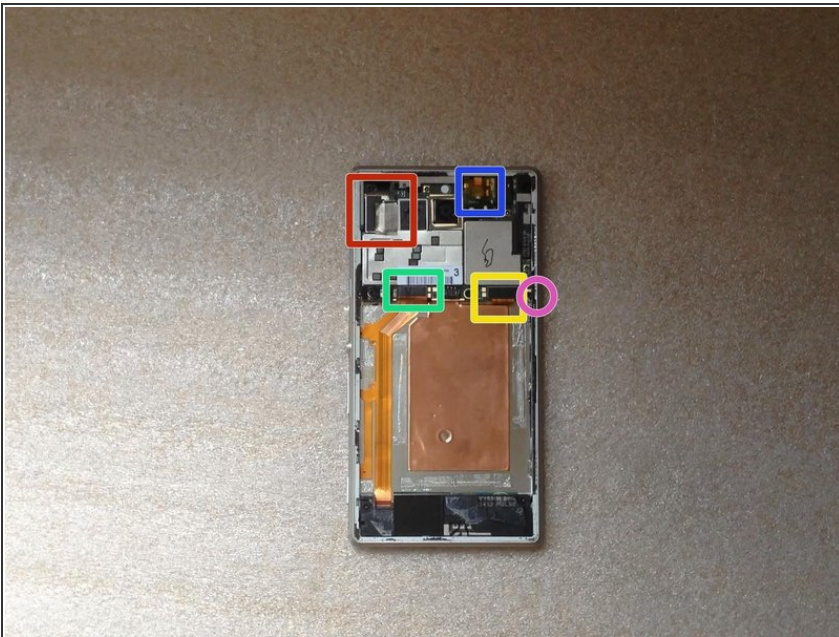
- Disconnect the Battery Cable.
- The battery is stuck to the phone frame. Use the white tape to remove it.
- Li-Polymer Battery, 2230 mAh
- Part number: LIS1551ERPC
- [Please SUBSCRIBE to my channel ツ](#)

## Step 3 — Logic Board



- Remove the SIM and the memory cards.
- Remove x4 T5 Torx Corner screws & x2 T5 Torx Screws on the Board

## Step 4



- Disconnect one by one:
  - Touchscreen flex cable
  - Proximity sensor flex cable
  - Power on, Volume buttons cable
  - SIM & Micro SD flex cable
  - Coaxial antenna cable

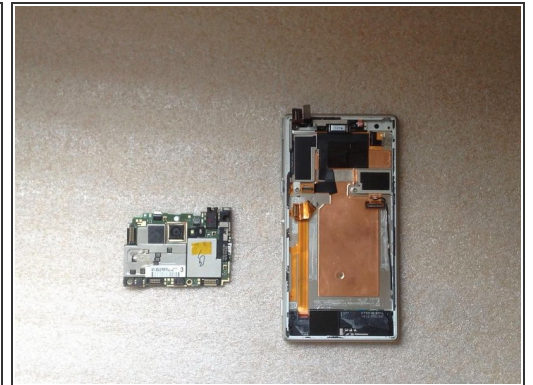
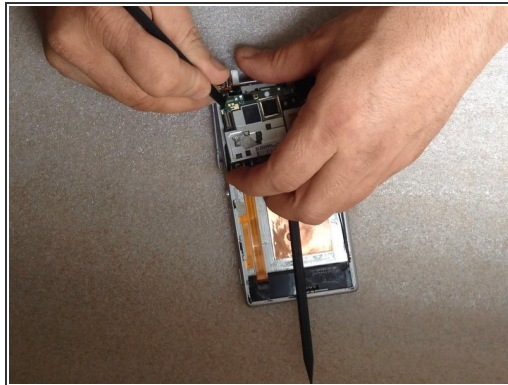
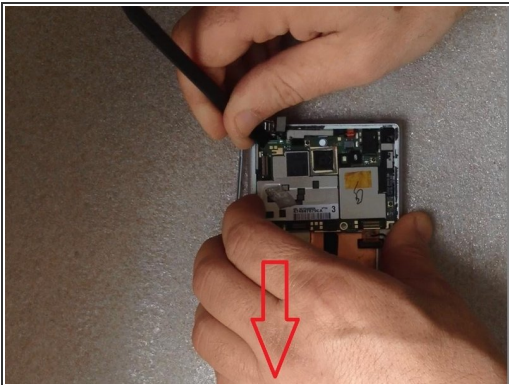


## Step 5



- Disconnect the LCD Display flex cable. The connector is on the other side of the board, under the Power/Volume buttons flex cable connector.
- Put one plastic spudger between the Logic board and the Main frame.

## Step 6

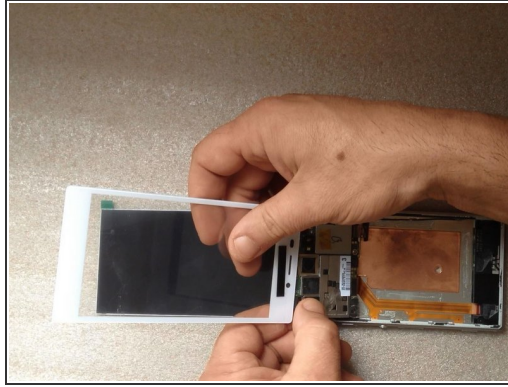
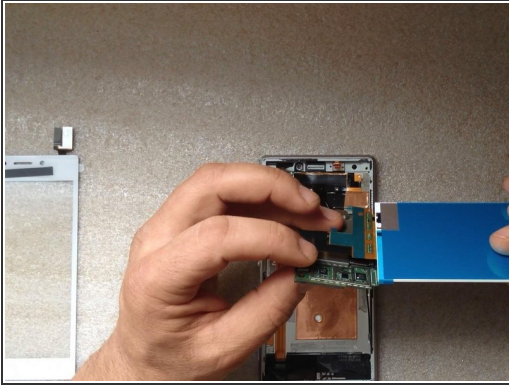


- ⚠ Step one: move aside less the left side of the board - down.
- ⚠ Step two: the left side of the Logic board must go out of the main frame.
- ⚠ **For this manipulation use only plastic tools.**

📌 [Please SUBSCRIBE to my channel ツ](#)

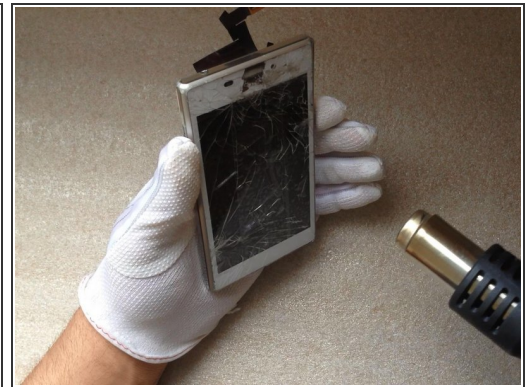
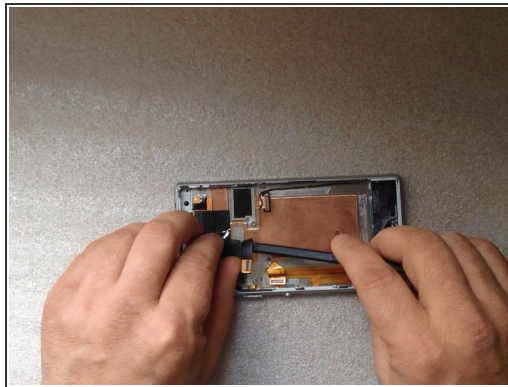


## Step 7 — LCD Display, Touchscreen / Glass / Digitizer



- Let's first test the new spare parts.

## Step 8



- Use a scotch tape for the broken glass.
- Unstuck the LCD Display flex cable from the Main frame.
- Now preheat the glass before removing. This will soften the adhesive and will make separating more easy.

 You can use a hairdryer.

## Step 9



- With a cutter, make a room for a plastic tool, then continue with separating the Touchscreen & LCD Display from the frame.

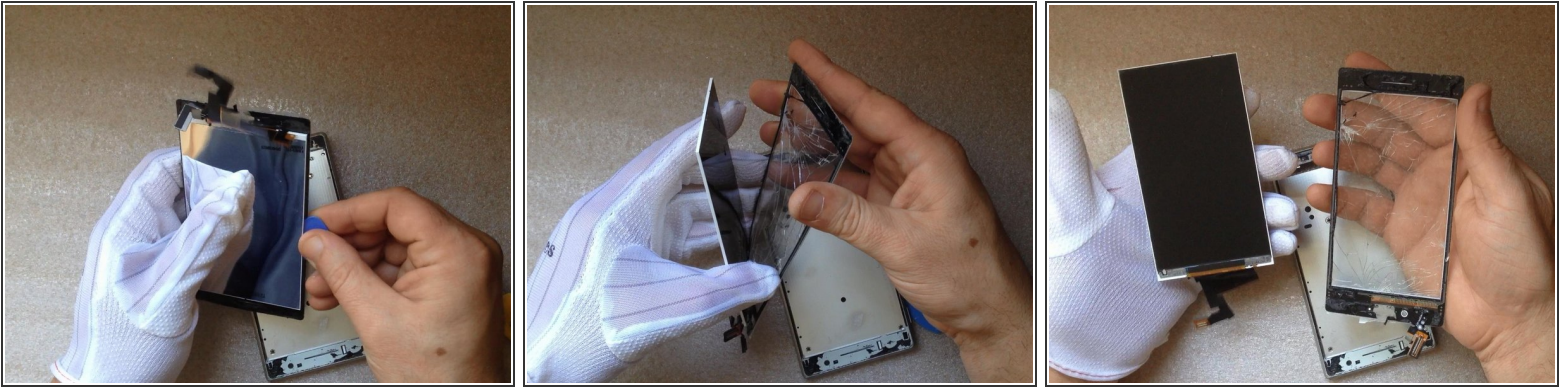
## Step 10



- This is the Display Assembly.
- The LCD Display and the Touchscreen are not firmly bonded, while some other other models.

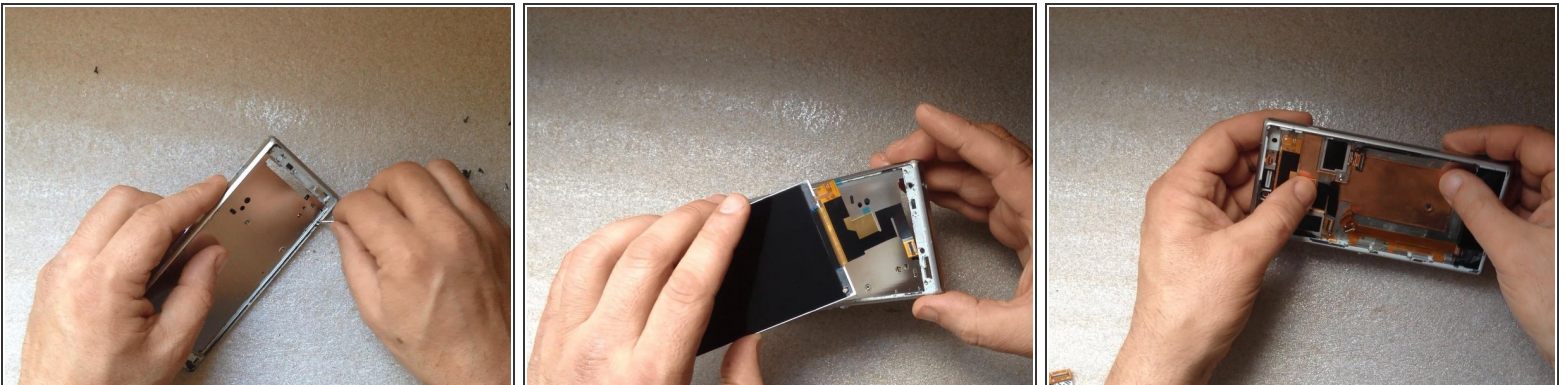


## Step 11



- If your Touchscreen or LCD Display is OK, separate them carefully.
- In our situation, both of them are broken.

## Step 12



- Clean the frame from the remains of tape.
- Install the LCD Display and the flex cable on its correct place.

## Step 13



- We could not find adhesive sticker for this model, so We used universal adhesive tape 3M - 3 mm.
- Don't forget to remove protectors from the LCD Display and from the inner side of the Touchscreen.

## Step 14



- When finishing the assembly of the inner parts, use same technic to install the Back cover.

To reassemble your device, follow these instructions in reverse order.