



Smart Tweezers and LCR-Reader LCR-meter Battery Replacement

This guide will show you how to replace the Li-Ion battery in Smart Tweezers ST-5S and LCR-Reader

Written By: brittany



INTRODUCTION

Before opening the LCR-Reader, place a small bit of tape over the button on the top housing. This will keep the button from falling loose and being lost.



TOOLS:

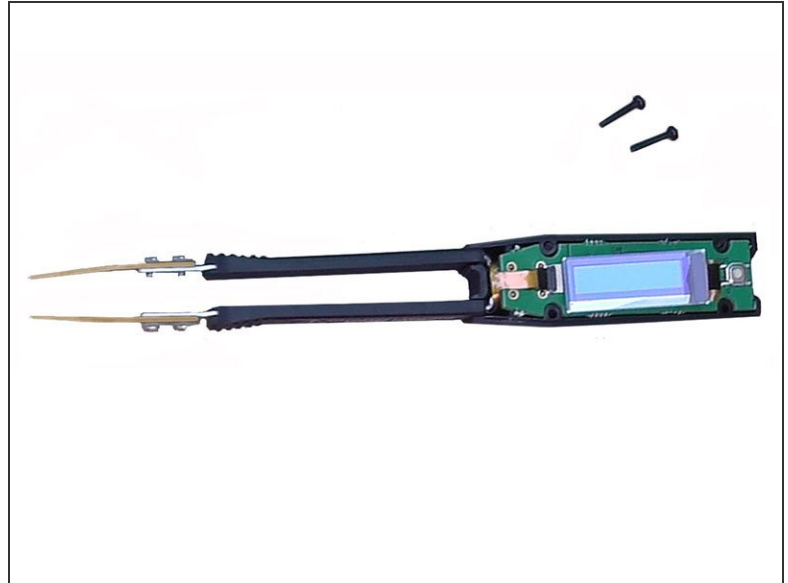
- [T6 Torx Screwdriver](#) (1)
- [Scotch tape](#) (1)
- [Phillips #00 Screwdriver](#) (1)



PARTS:

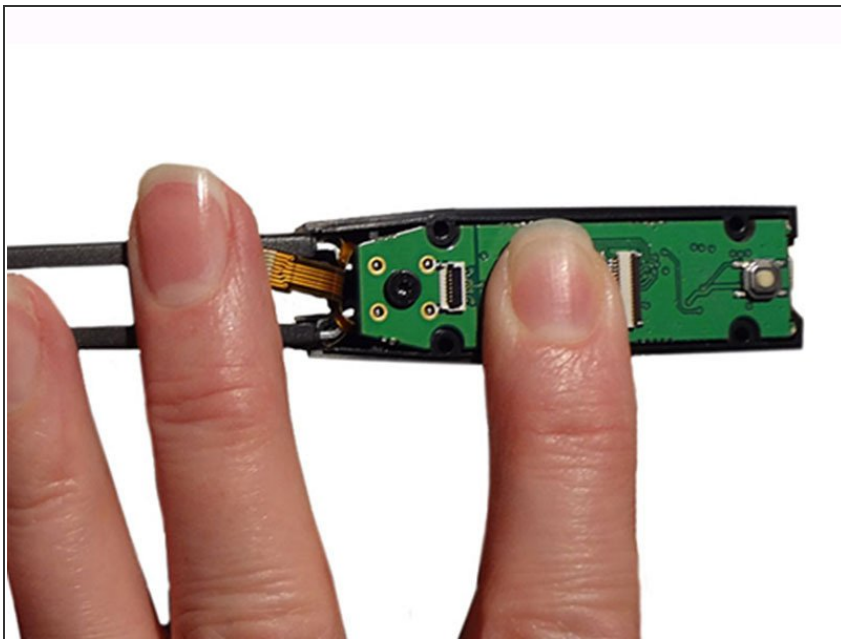
- [Smart Tweezers replacement battery](#) (1)
Li-Ion

Step 1 — Replacing the battery in Smart Tweezers ST-5S and LCR-Reader



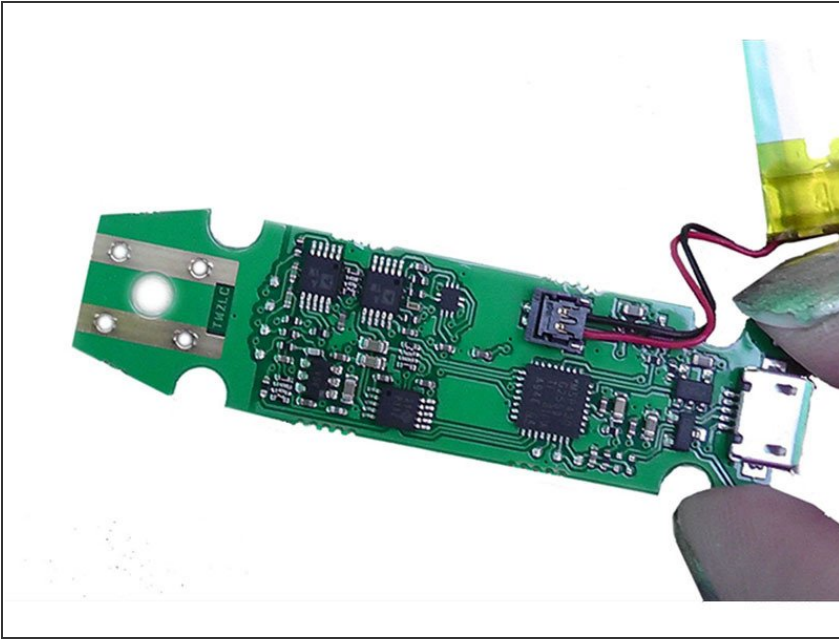
- Start by removing the 4 screws in the back of the device using a size 00 Philips screw driver.

Step 2 — Removing the PCB



- Gently disconnect the tweezers from the PCB by opening the zif connection and removing the tab.
- This will give access to the centre screw. Using a T6 torx screwdriver, remove this screw. The nut on the back of the device will fall loose; set aside.

Step 3 — Removing the battery



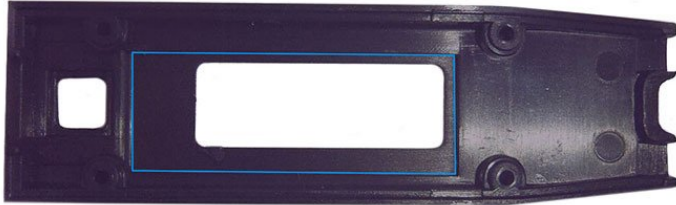
- The PCB can be removed from the housing.
- On the bottomside, the battery connector can be disconnect.
- Gently tug the connector away from the PCB.
- Replace the old battery with the new one by gently pressing the connector into the socket.

Step 4 — Replacing the battery



- Put some double-sided tape on one side of the battery to keep it from rattling inside the device. Press the battery into the bottom housing.
- Replace the PCB, and centre screw and nut.
- Reconnect the tab from the arms into the zif connector

Step 5 — Closing the device



- When closing the device, hold the screen in the rectangle on the top housing. If the screen is not within these parameters, it may be broken or damaged while tightening the screws.
- The easiest way to do this is holding under the screen while lining up the button's end with the bottom housing. Slide your finger out while putting the housing pieces together.
- Replace the 4 screws in the bottom of the device.

Be careful when closing the device. The screen must be centered in the top housing, if it is not, it may become cracked or damaged.