



Makita BTD142 Trigger Switch Replacement

Use this guide to replace the switch on your Makita 18V Cordless Impact Driver.

Written By: Ron Davis



INTRODUCTION

The trigger switch on an impact driver can wear out over time or break from a fall. Use this guide to get your trusted tool working again.



TOOLS:

- [Phillips #2 Screwdriver](#) (1)
- [Flathead 3/32" or 2.5 mm Screwdriver](#) (1)



PARTS:

- [Trigger Switch for Makita BTD142 18V Cordless Impact Driver](#) (1)

Makita Part#: 650564-0

Step 1 — Battery



- Push down on the button on the front of the battery and slide the battery forward.

Step 2 — Hammer Case Cover



- Remove the rubber bumper from the hammer case cover on the front of the impact driver. Grab the back edge of the bumper and pull it forward over the end of the impact driver.
- ☑ When replacing the bumper, be sure to align the tabs on the inside of the bumper with the four slots on the hammer case cover.
- The hammer case cover has two large tabs that seat into the groove around the front of the hammer case. Using a prying tool or flat head screwdriver, gently pry each tab out of the groove while pulling forward on the cover. After both tabs have released, the cover should slide off the front of the hammer case.

Step 3 — Rear Cover



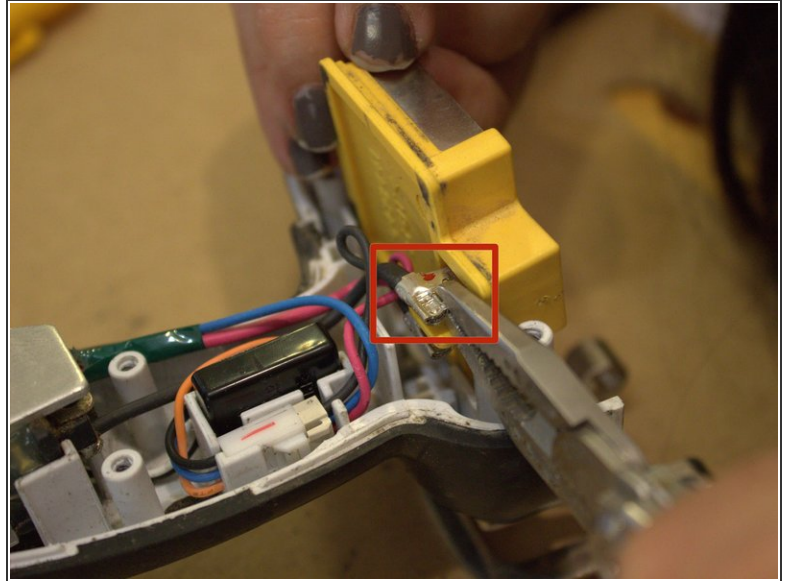
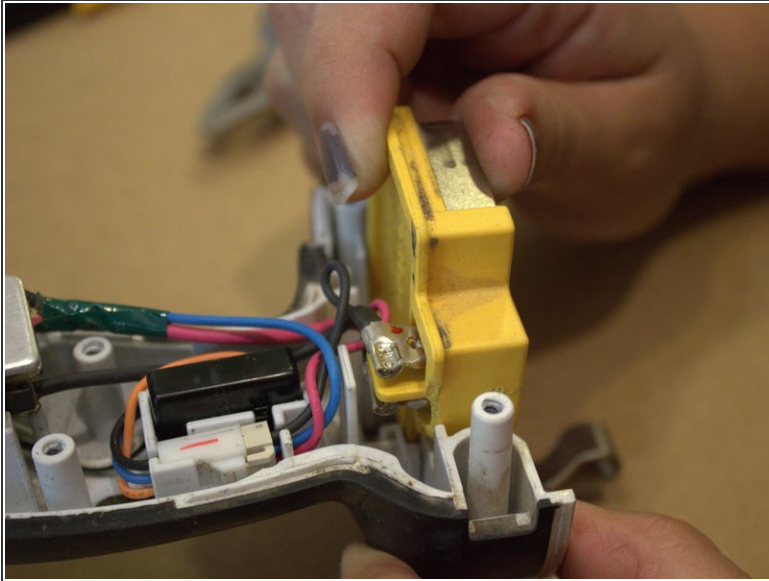
- Unscrew the two identical Phillips screws on the rear cover.
- Pull back on the cover to remove it.

Step 4 — Housing



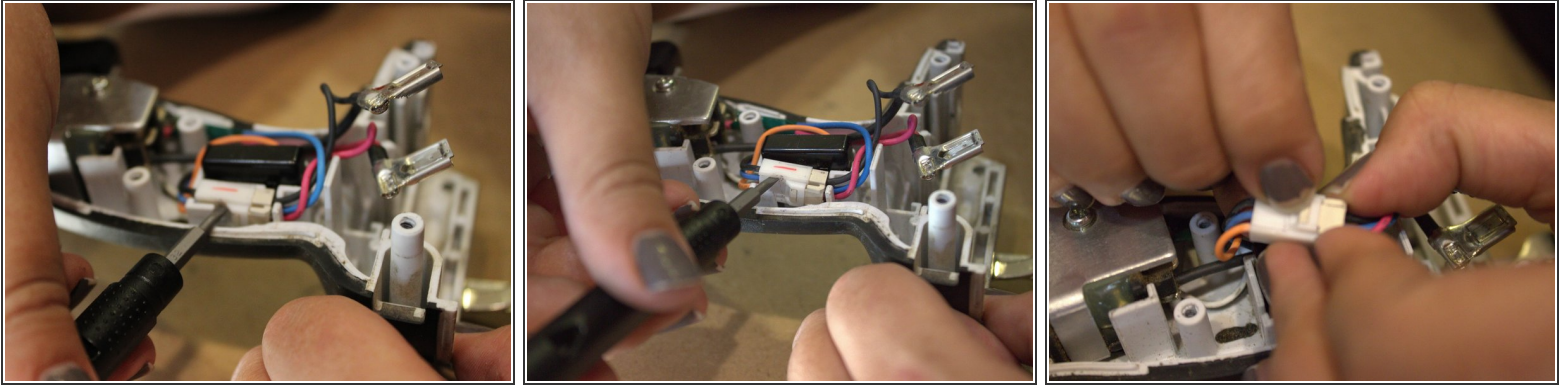
- Turn the impact driver so that its right side faces up. Remove the eight identical Phillips screws that hold the two sides of the housing together.
 - Gently pull up on the side of the housing. Use a prying tool or flat head screwdriver to separate the two sides of the housing. Be sure to keep the yellow battery terminal seated in its slot on the lower housing.
 - When the housing is almost open, the forward/reverse change lever will catch on a round tab at the top of the trigger switch. Gently lift up on the trigger while pulling the housing up and towards the rear of the impact driver, allowing it to come free.
- ☑ When reassembling the impact driver, make sure to set the round tab of the switch into the groove on the forward/reverse change lever.

Step 5 — Battery Terminal



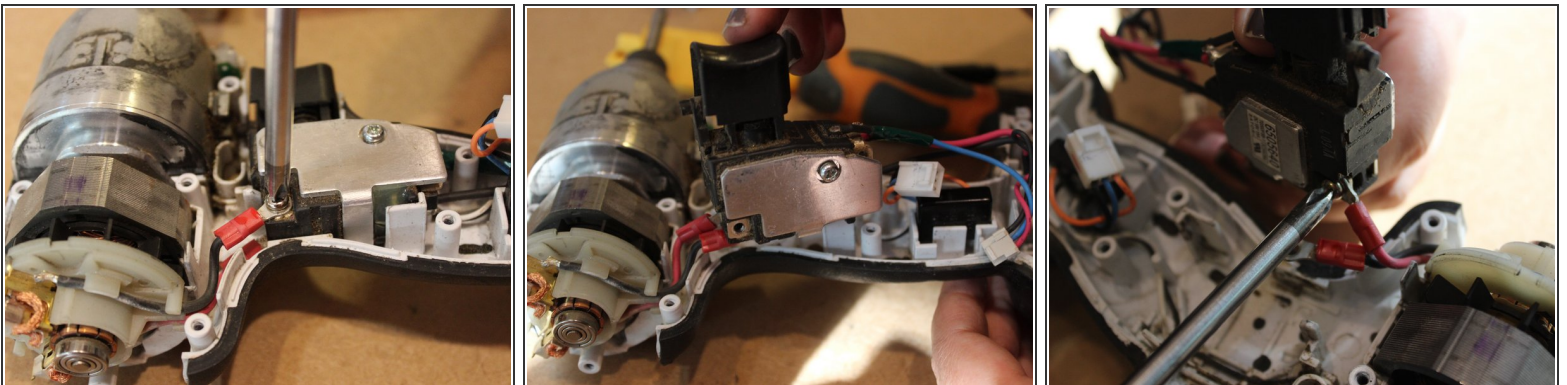
- Lift the yellow battery terminal out of the housing.
- Using a pair of thin-nose pliers, carefully remove the blade connectors from the positive and negative leads on the battery terminal.
- ⓘ The blade connector with the red wire is connected to the positive lead. The connector with the black wire is connected to the negative lead.
- 🔍 Notice the orientation of the blade connectors and the wires connected to them. When reassembling the impact driver, be sure to route the wires in the same way. The blade connectors should have their wires facing forward.

Step 6 — Lighting Circuit



- The wires of the trigger switch are connected to the lighting circuit with a small connector. Gently pry the connector out of the housing.
- There's a small tab on the back of the connector. Push down on the tab and pull apart the two sides of the connector. Remember to hold the connector by the plastic and not the wires.

Step 7 — Trigger Switch



- Unscrew the Phillips screw connecting the ring terminal of the black wire to the trigger switch.
- Pull up on the trigger switch, rotating the switch so that the trigger faces up.
- Unscrew the Phillips screw connecting the ring terminal of the red wire to the trigger switch.
- Lift the trigger switch up and out of the housing.

To reassemble your device, follow these instructions in reverse order.

