



Motorola Defy Midframe Replacement

Replace the midframe.

Written By: Geoff Wacker



INTRODUCTION

Use this guide to replace the midframe on your Motorola Defy.



TOOLS:

- [T5 Torx Screwdriver](#) (1)
 - [64 Bit Driver Kit](#) (1)
 - [Magnetic Project Mat](#) (1)
 - [Metal Spudger](#) (1)
 - [iFixit Opening Tools](#) (1)
-

Step 1 — Rear Case



- Using the screwdriver and the T-5 bit, unscrew the seven 5 mm screws around the outside of the phone.

Step 2



- Remove the back cover of the phone by sliding the bottom black button to the unlock position and lifting it up.

Step 3 — Battery



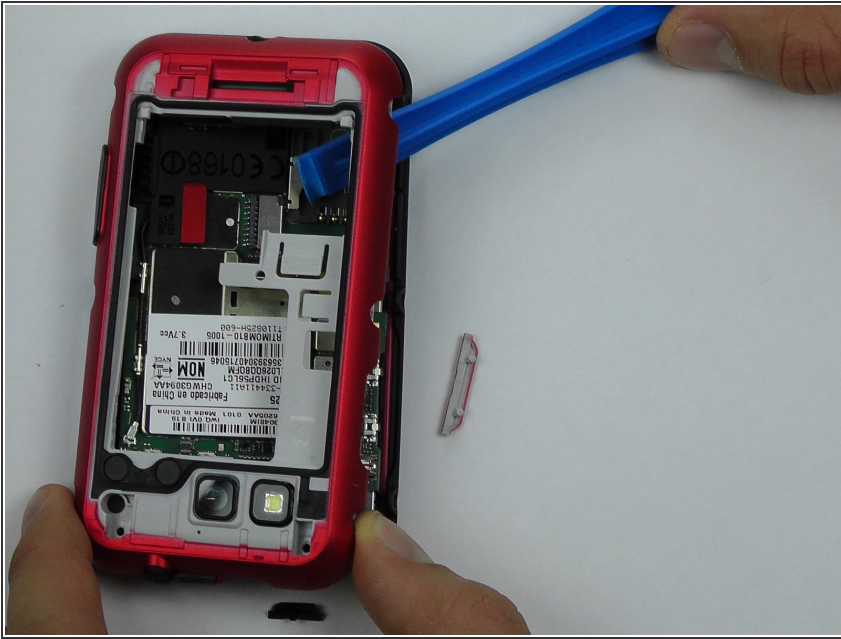
- Use a plastic opening tool to pry the battery out of the phone.

Step 4 — Midframe



- Unscrew the two silver screws located at the top of the back of the phone.

Step 5



- Use a plastic opening tool to gently pry the midframe from the rest of the phone.

To reassemble your device, follow these instructions in reverse order.