



iPod Nano 6th Generation Clip Replacement

Use this guide to remove your Nano's belt clip.

Written By: Andrew Bookholt



INTRODUCTION

Use this guide to remove your Nano's belt clip.

TOOLS:

Heat Gun (1)

Phillips #00 Screwdriver (1)


iFixit Opening Tool (1)

Tweezers (1)

Step 1 — Front Panel Assembly



- Use a heat gun or hair dryer to soften the adhesive securing the perimeter of the front panel assembly to the outer case.

 Be careful not to overheat the front panel assembly, as it may result in damage to the LCD.

Step 2



- While the front panel is still warm, use the edge of an opening tool to pry it from the headphone jack side of the front panel assembly out of the Nano.

⚠ Do not attempt to pry out the front panel assembly from, or insert the opening tool into the left side of the display, as the display data cable is right underneath and may be damaged in the process.

- Continue prying the perimeter of the front panel assembly out of the outer casing, being careful not to damage the display data cable held under its left edge.
- ① If the front panel is excessively difficult to lift out of the outer case, reheat the area and try again.

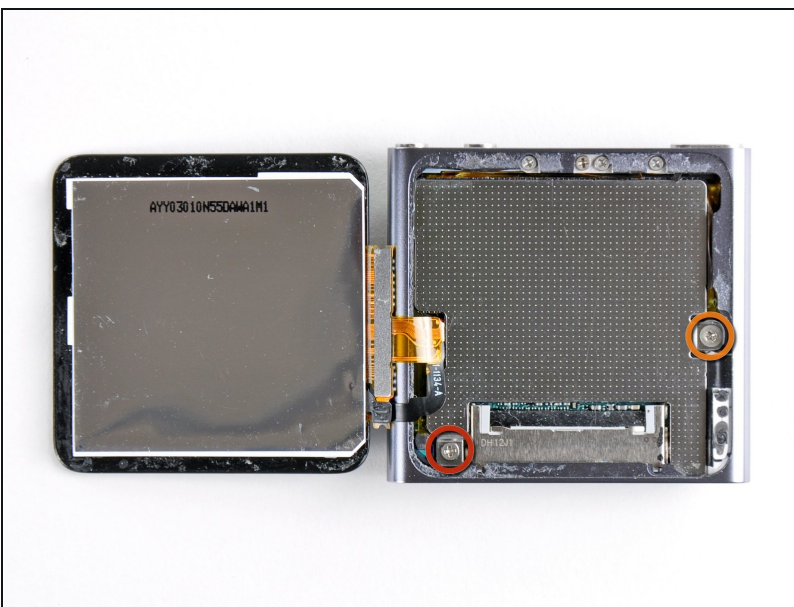
Step 3



- Lift the front panel assembly from the headphone jack side of the Nano.
- Pull the front panel assembly slightly away from the left side of the Nano to clear the display data cable.

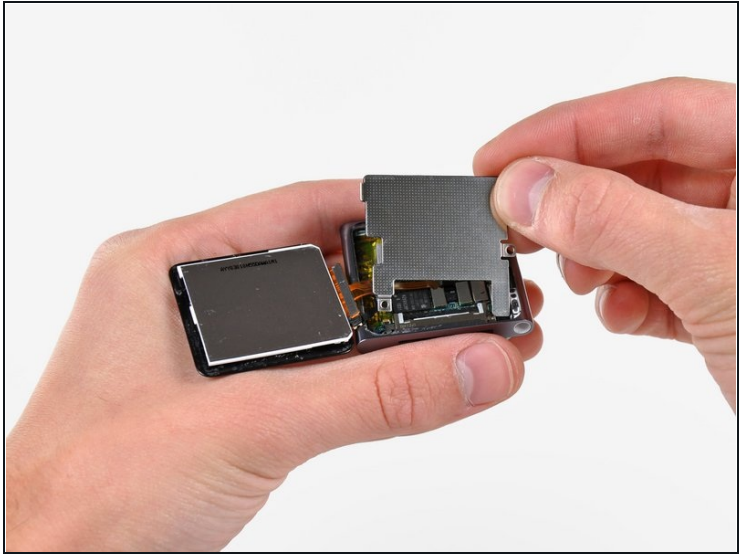
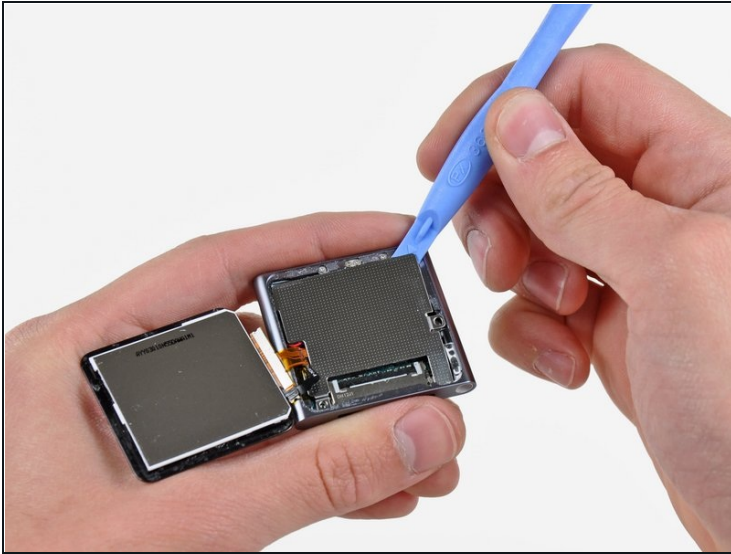
⚠ The front panel assembly is still attached to the Nano by two cables.

Step 4



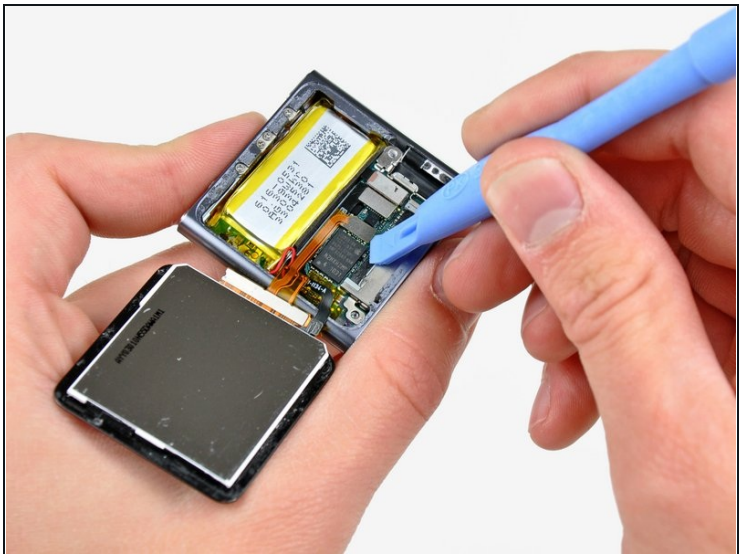
- Lay the front panel assembly next to the Nano.
- Remove the following two screws:
 - One 2.3 mm Phillips screw
 - One 2.6 mm shouldered Phillips screw

Step 5



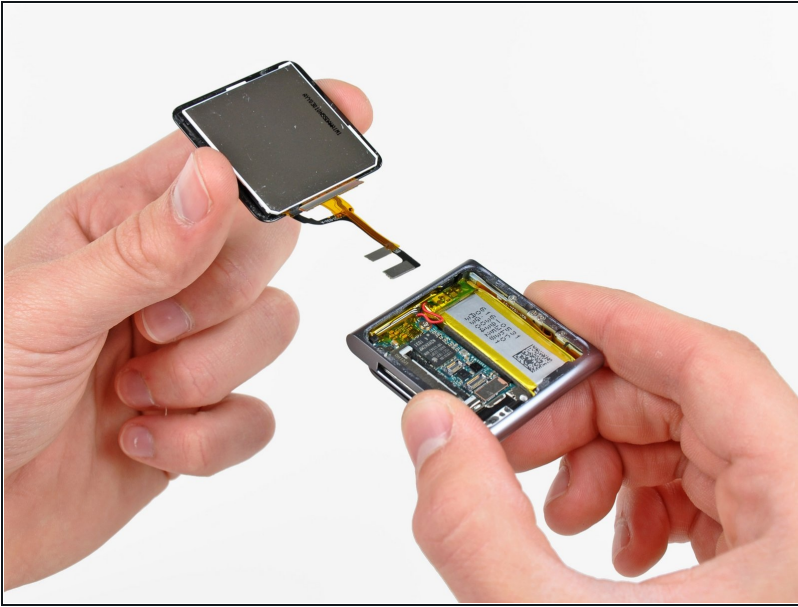
- Use an opening tool to pry the steel shield out of the Nano by its upper right corner.
- Remove the steel shield from the Nano.

Step 6



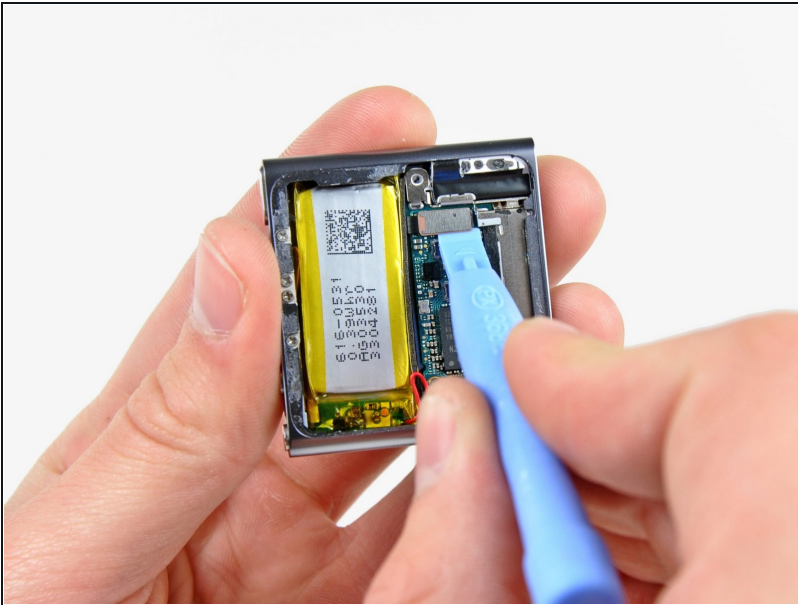
- Use an opening tool to disconnect the display data and digitizer cable connectors up from their sockets on the logic board.

Step 7



- Remove the front panel assembly, minding its two cables that may get caught.
- ★ To reassemble, you can use the double-sided tape found [here](#).

Step 8 — Logic Board Assembly



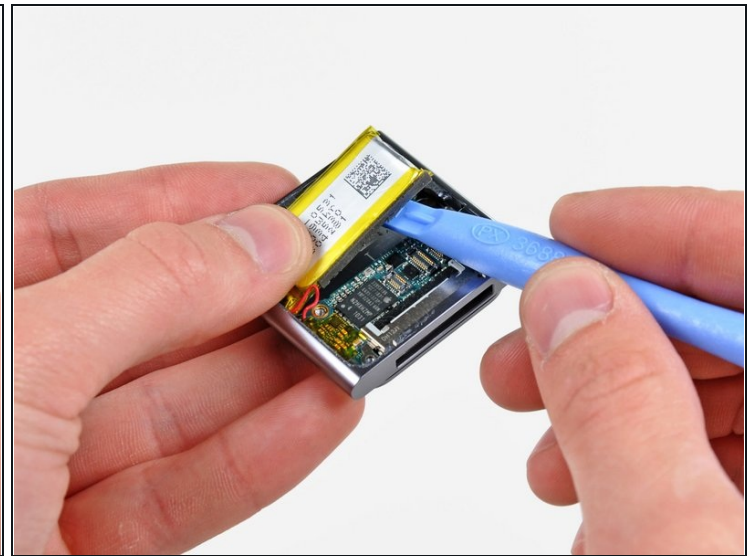
- Use an iPod opening tool to lift the headphone jack assembly connector up and out of its socket on the logic board.

Step 9



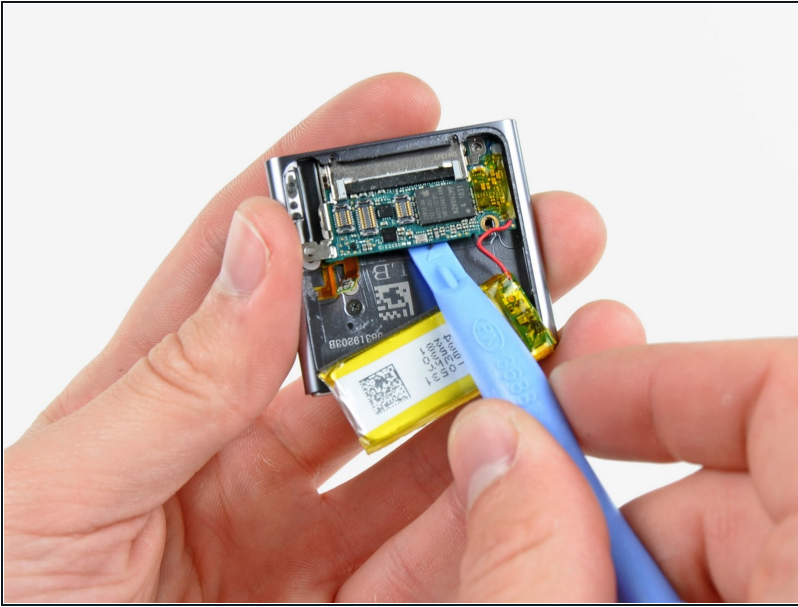
- Remove the single 1.9 mm Phillips screw securing the logic board to the outer case.

Step 10



- Use an iPod opening tool to gently pry the battery up from the adhesive securing it to the outer case.
 - ⓘ The adhesive is very strong. Work carefully and slowly, making sure to not slip and break any fragile components.
- Use your thumb to pull the battery toward the left side of the Nano as you pry the battery's other edge out of the outer case.

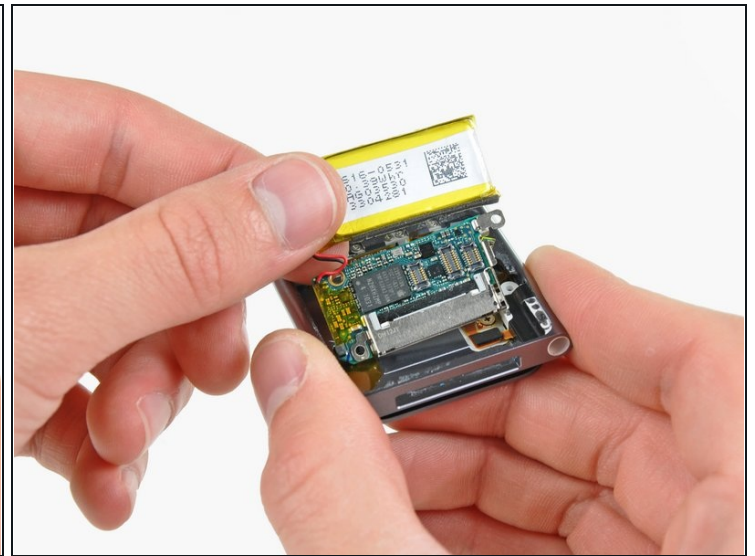
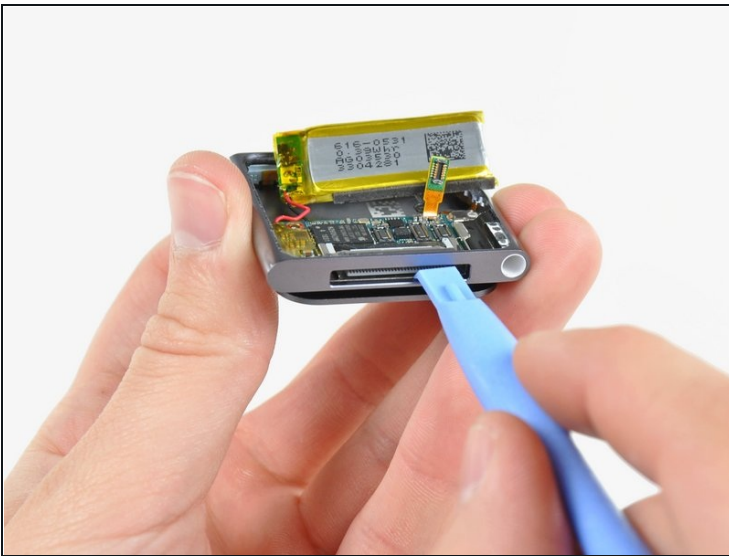
Step 11



- Use an iPod opening tool to gently pry the logic board off the adhesive holding it against the outer case.

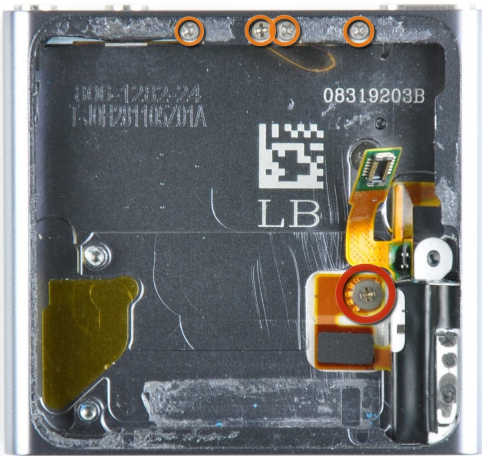
⚠ Do not excessively pry the logic board upward.

Step 12



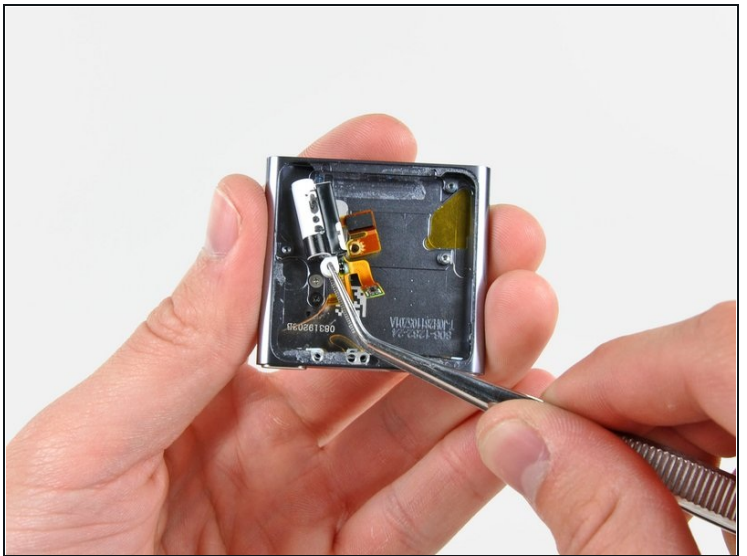
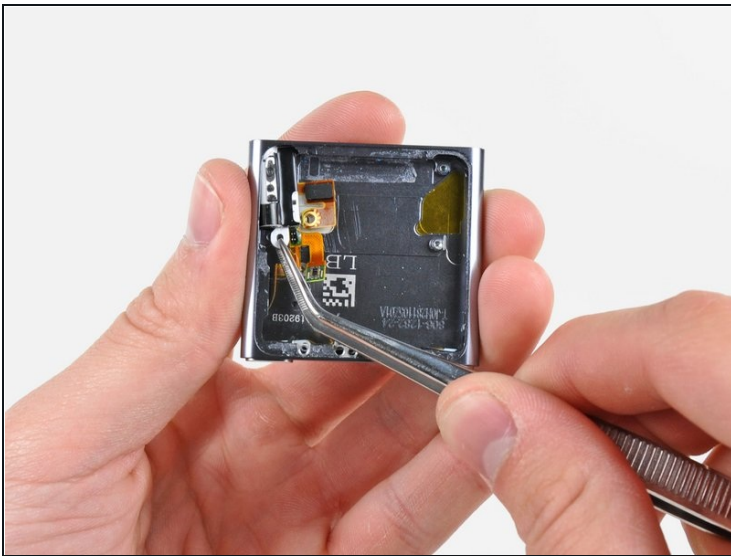
- Use your iPod opening tool to gently push the dock connector toward the center of the Nano.
- Remove the logic board assembly from the Nano, being careful not to damage the headphone jack assembly cable.

Step 13 — Headphone Jack Assembly



- Remove the following five screws:
 - One 1.7 mm Phillips screw
 - Four 3.9 mm Phillips screws.

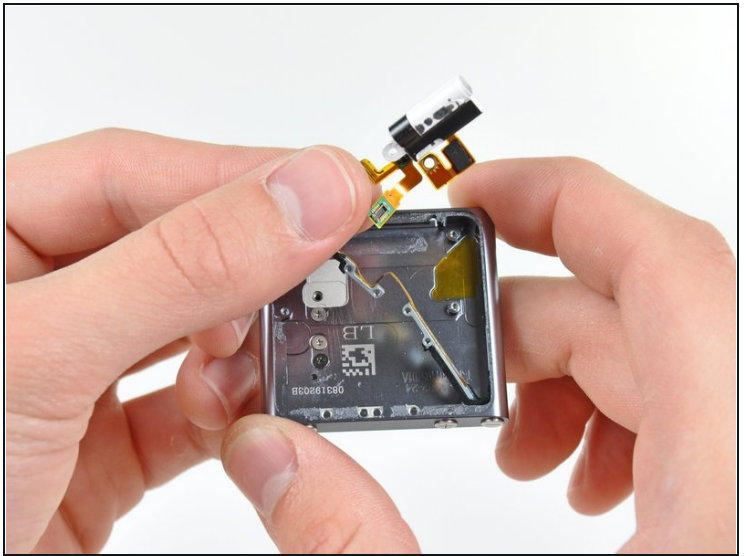
Step 14



- Use a pair of [tweezers](#) to carefully pull the headphone jack toward the center of the Nano.

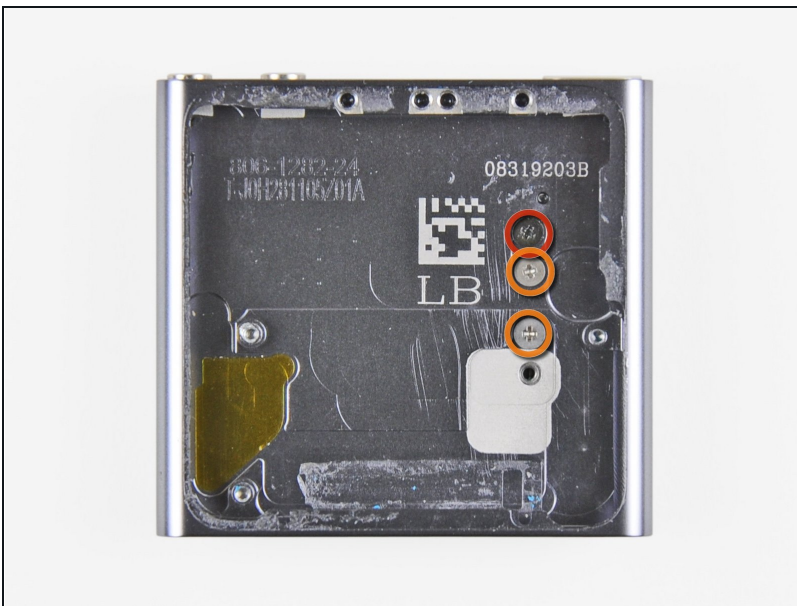
⚠ Avoid pulling on the cable, as it is very thin and delicate. The plastic mounting ear is a safer area to pull on.

Step 15



- Very carefully pull the headphone jack assembly ribbon cable toward the dock connector to separate the sleep and volume buttons from the outer case.
- Remove the headphone jack assembly.

Step 16 — Clip



- Remove the following three screws:
 - One black 1.8 mm Phillips screw
 - Two 1.7 mm Phillips screws

Step 17



- Remove the clip from the outer case.
- ⓘ When reinstalling the clip, it is necessary to squeeze the base of the clip very tightly against the outer case as you insert the first screw.

To reassemble your device, follow these instructions in reverse order.