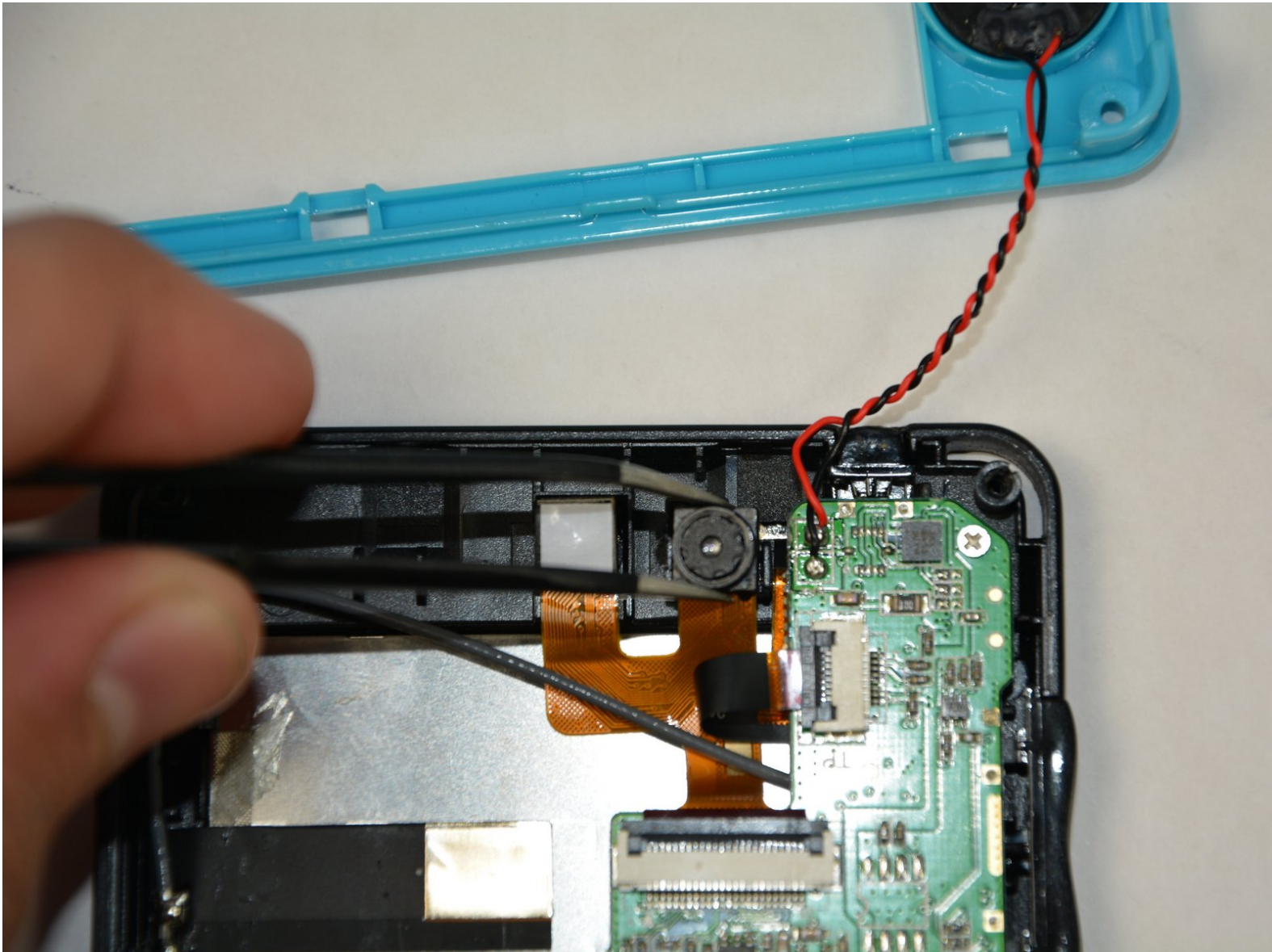




# Kurio Touch 4S Front & Rear Facing Cameras Replacement

If your front & back camera does not turn on, it may need to be replaced.

Written By: Khalid AlTamimi



---

# INTRODUCTION

This guide will show you how to replace your front & back camera of your Kurio Touch 4S

---



## TOOLS:

- [Phillips #1 Screwdriver](#) (1)
  - [Tweezers](#) (1)
  - [Detailing Brush](#) (1)
  - [iFixit Opening Tools](#) (1)
  - [Soldering Iron](#) (1)
-

## Step 1 — Front & Rear Facing Cameras



- Make sure to open the back cover easily using the plastic opening tool.

## Step 2



- Remove back cover by prying away from the Kurio.
- i** The easiest place to remove the cover is from the bottom and top; try to open it from right to left sides.

## Step 3



- To remove the battery, make sure the four 5mm Philips screws on each side of your device is open using the philips#1 Screwdriver.

## Step 4




- After you remove your four 5mm Philips screws, use your plastic opening tool to help you open the plastic cover of your device.
- ⓘ All these screws are identical so don't worry if you miss them up.



## Step 5



- Remove the battery because it blocks the plastic shield that covers the camera.

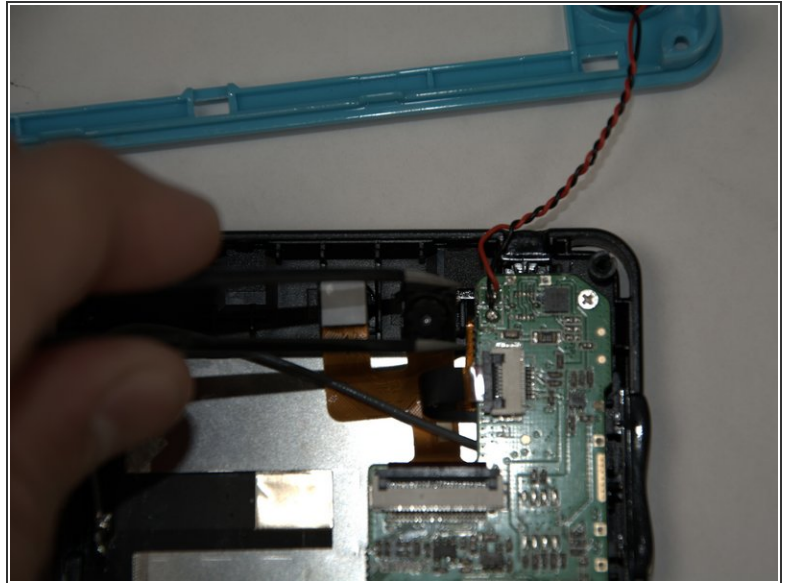
 Do not remove the wires that are attached to the battery and the motherboard.

## Step 6



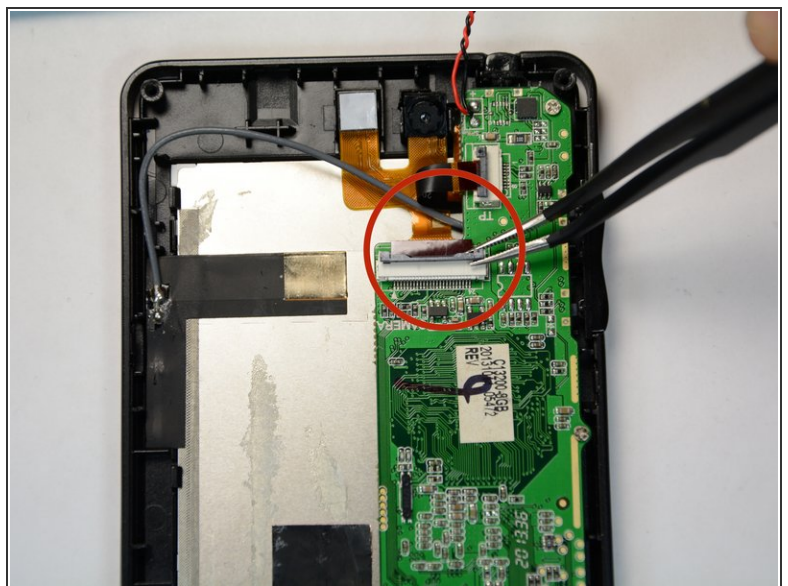
- Remove the plastic cover that is covering the camera area using tweezers.

## Step 7



- Separate the two halves of your Kurio Touch 4S.
- ⓘ Gently use a brush to remove any dirt or finger prints around the area.
- Use the Tweezers to detach the front and back camera from its place.

## Step 8



- Remove the copper wires by using the Tweezers to replace your new camera.

To reassemble your device, follow these instructions in reverse order.