



Homelite UT44172 Operating Switch Replacement

If you are having problems turning on the shear...

Written By: Adam soto



INTRODUCTION

If you are having problems turning on the shear or the operating switch seems too loose, this guide might be useful for replacing the part.



TOOLS:

- [Phillips #2 Screwdriver](#) (1)



PARTS:

- [UT44172 Operating Switch](#) (1)

Step 1 — Opening Device



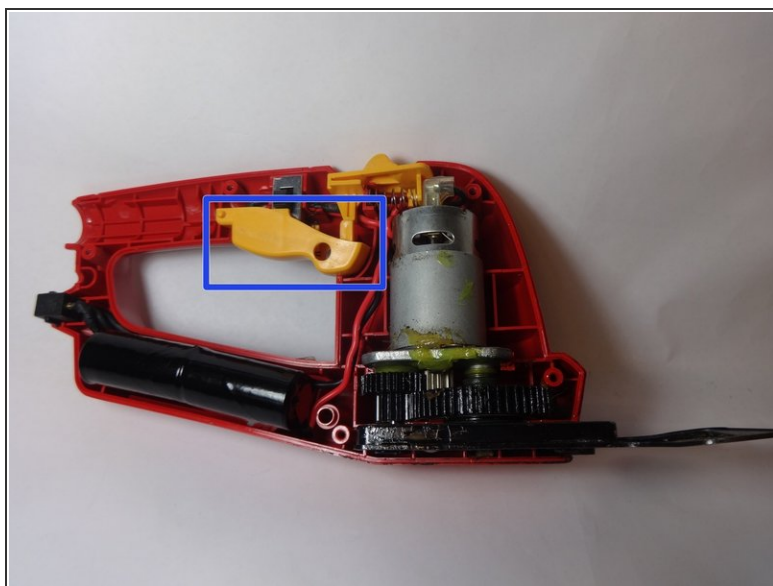
- Use a Philips-head screwdriver to remove the six, 15 mm screws from the casing.

Step 2 — Remove Faceplate



- Remove the faceplate from the main body of the device, lift it and expose the inner mechanisms.

Step 3 — Switch Removal



- Locate and remove the operating switch from the device.

Step 4 — Spring Replacement



- Replace the spring if it is deformed or broken.

⚠ Be careful that the wires do not get caught in the spring when replacing it.

To reassemble your device, follow these instructions in reverse order.