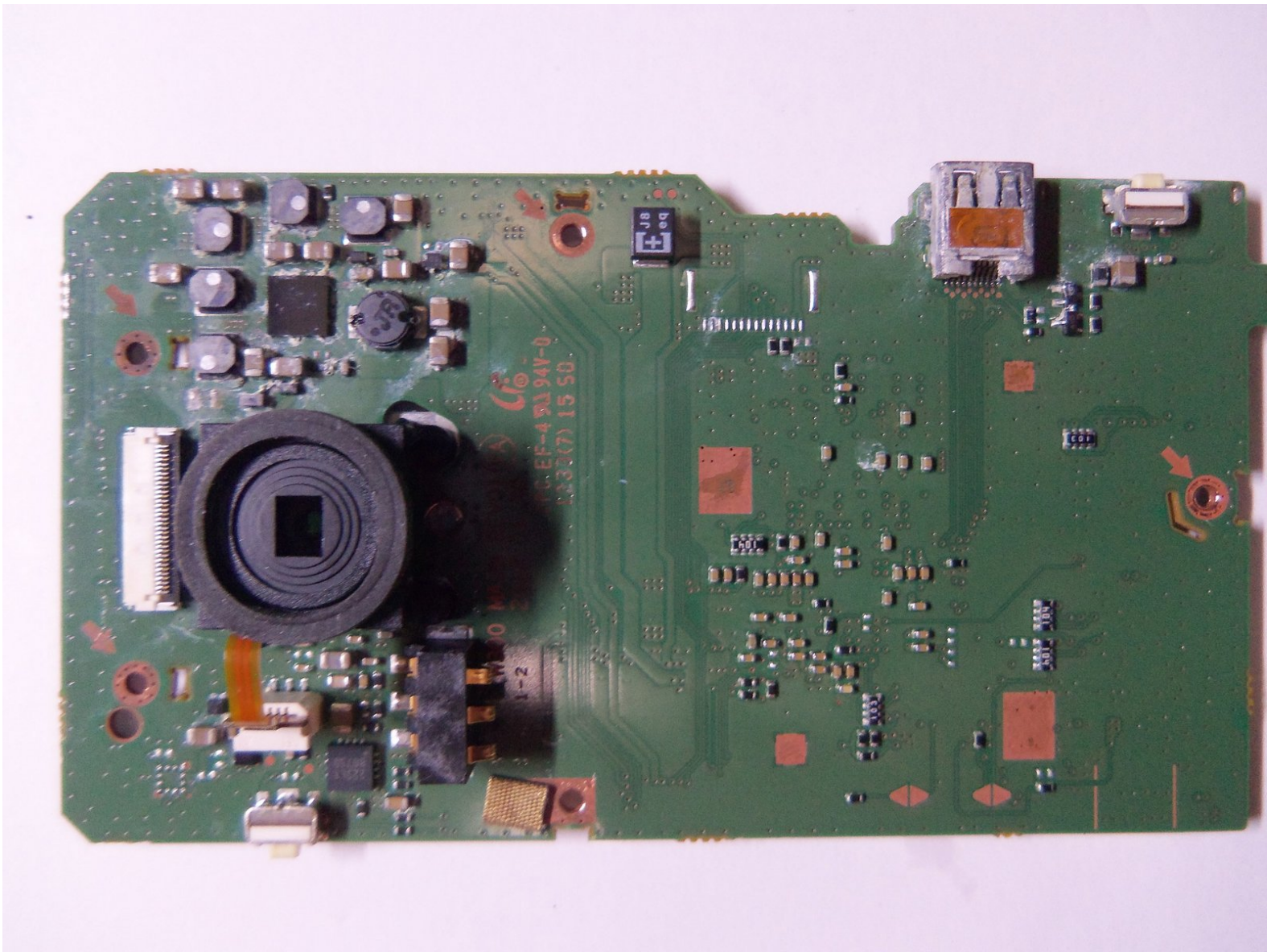




Samsung HMX-W300 Lens Replacement

Shows how to replace the lens through pictures...

Written By: Robert



INTRODUCTION

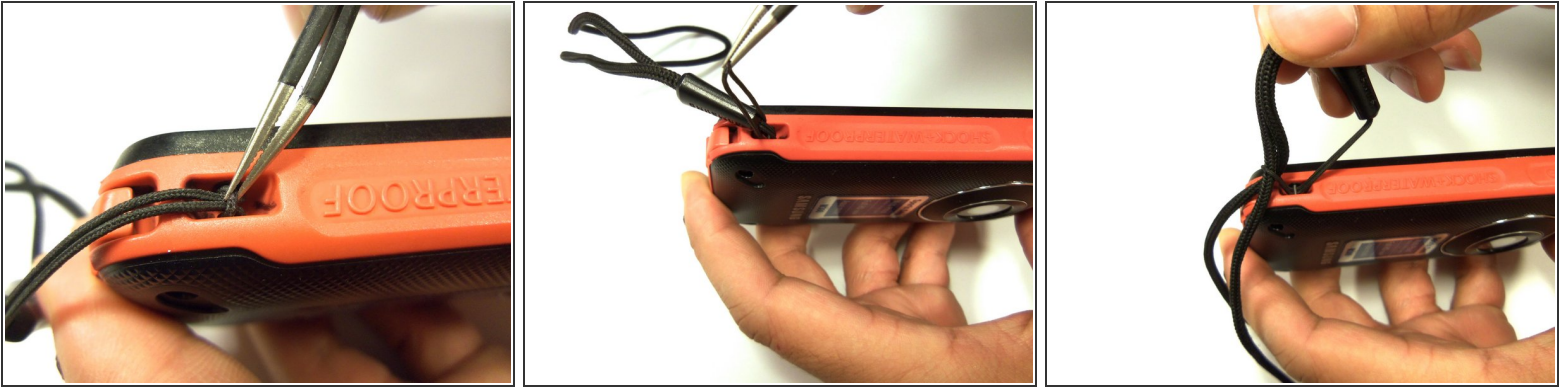
Shows how to replace the lens through pictures and words. The lens is located on the motherboard and requires tweezers to unplug ribbons and the remove motherboard from the rear case.



TOOLS:

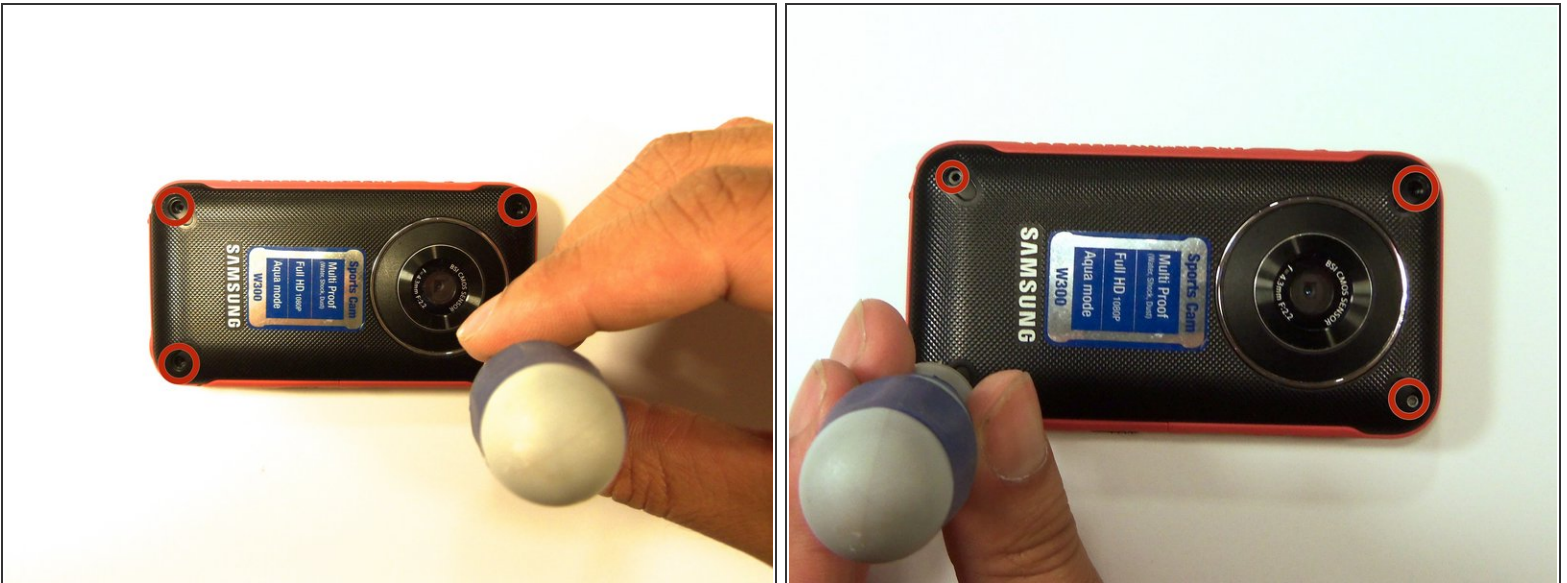
- [1.5mm Hex Screwdriver](#) (1)
 - [Phillips #00 Screwdriver](#) (1)
 - [iFixit Opening Tool](#) (1)
-

Step 1 — Disassembling Samsung HMX-W300



- To remove the wristband of the device, grab the middle loop and pull the band through.

Step 2



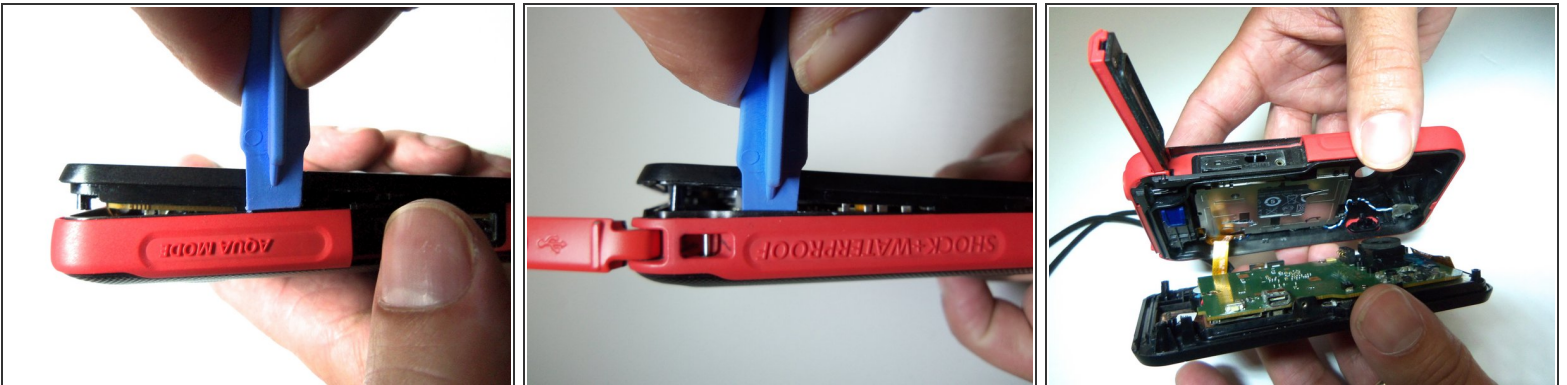
- Remove four screws with a Hex 1.5 mm screwdriver.

Step 3



- Open the HDMI door on the side of the camera.
- Remove the single screw using a Phillips #00 screwdriver.

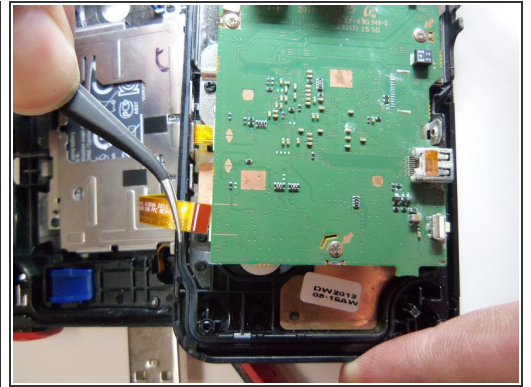
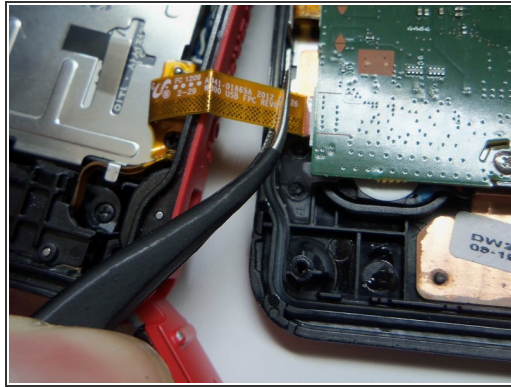
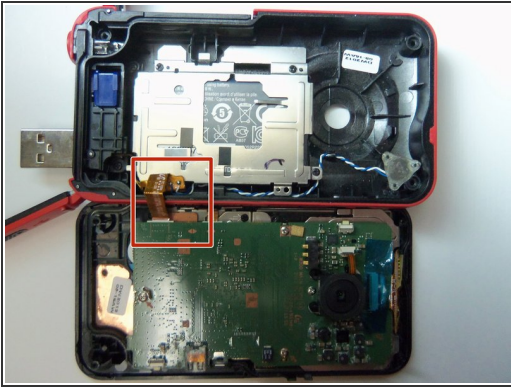
Step 4



- Use the iFixit opening tool on both sides on the device. Pry apart both sections with light force.

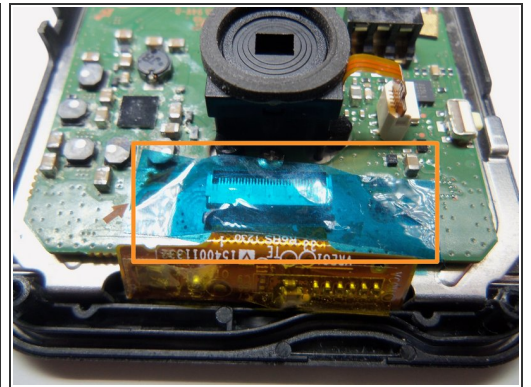
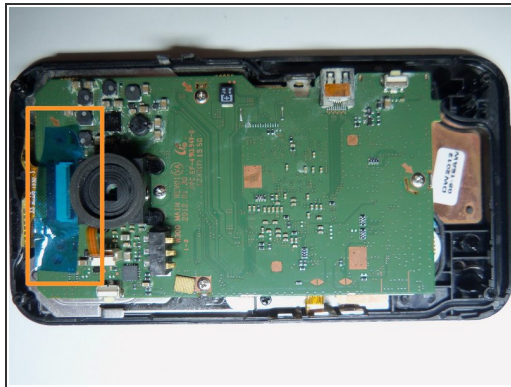
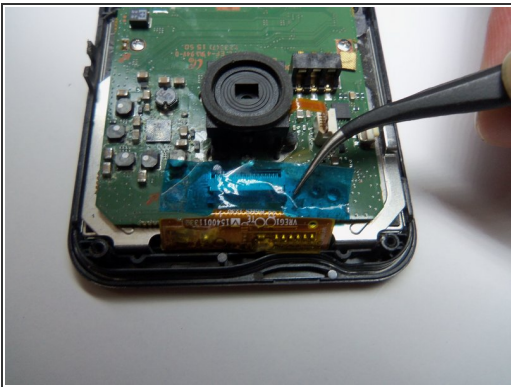
⚠ Do not apply too much force. There is a wire that attaches the front case with the rear case that can be damaged.

Step 5



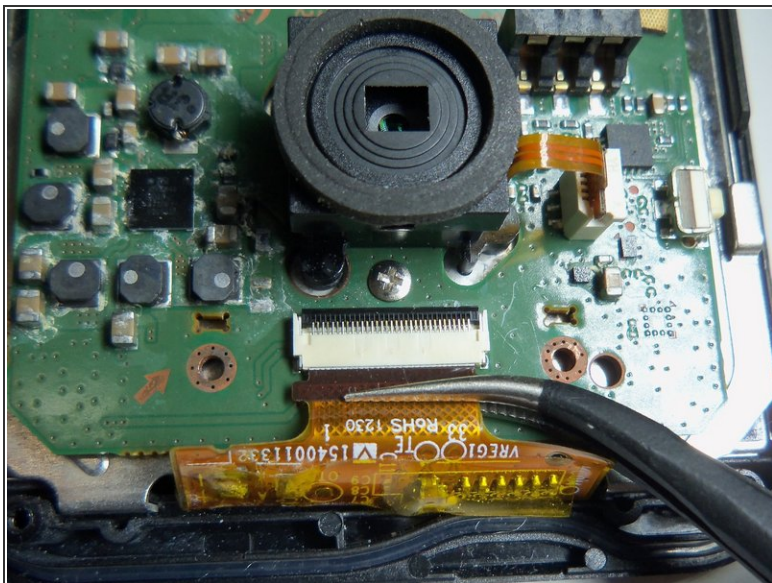
- Pull the wire ribbon out with a pair of tweezers.

Step 6 — Remove tape.



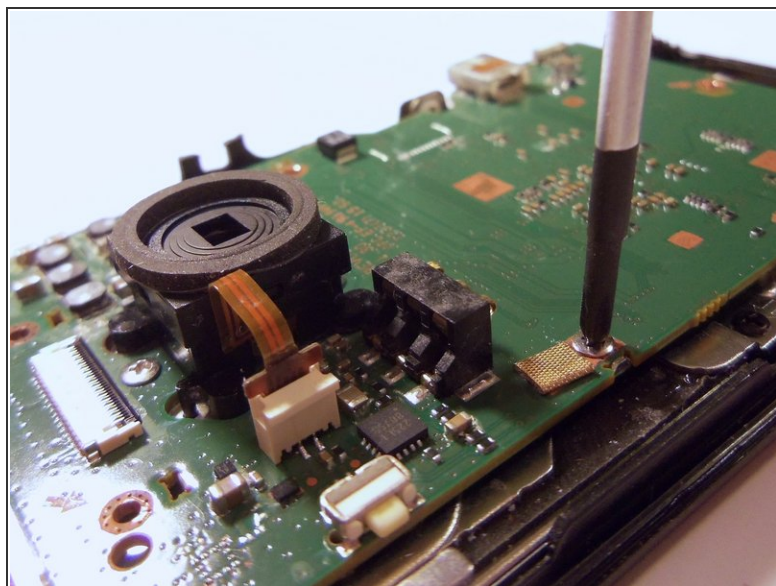
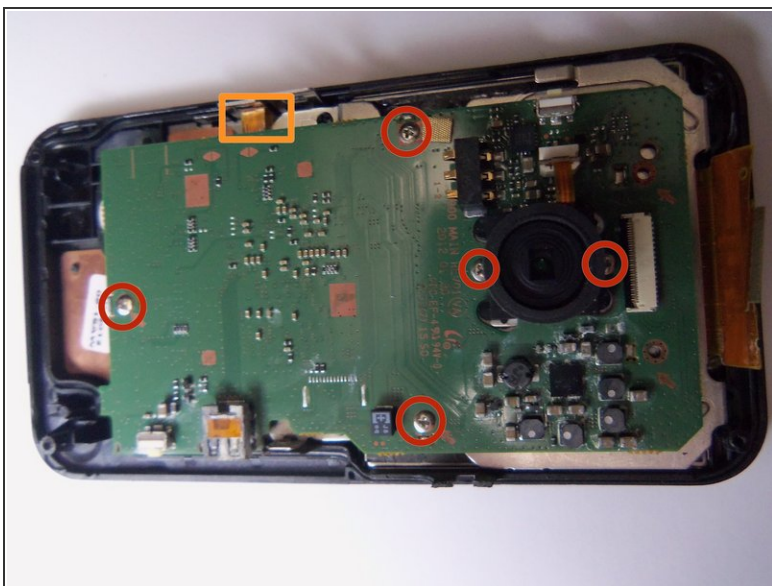
- Use tweezers to remove the tape.

Step 7 — Unplug wire ribbon.



- Use tweezers to grab the wire ribbon, then pull the wire out of connection.

Step 8 — Remove screws.



- There are 5 Phillips size 00 screws. Remove all 5 screws.
- Wire ribbon is attached to the motherboard.

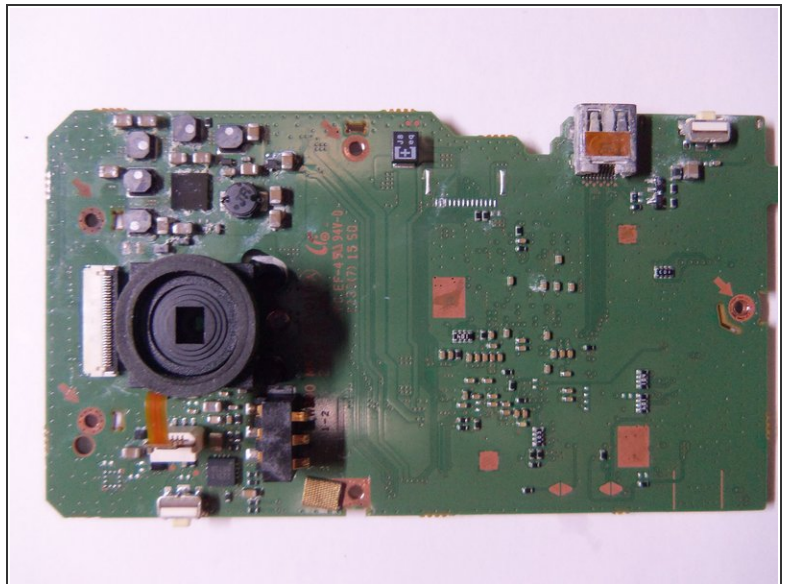
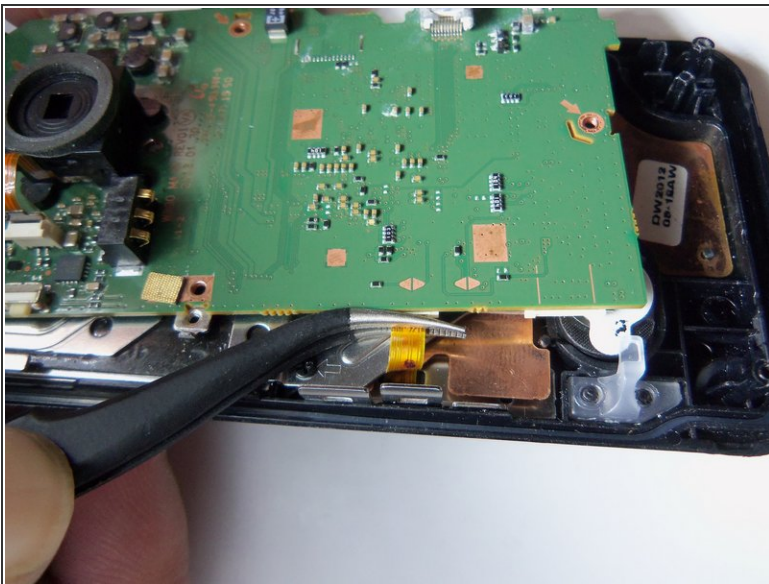
Step 9



- Pry the motherboard up using the plastic opening tool.

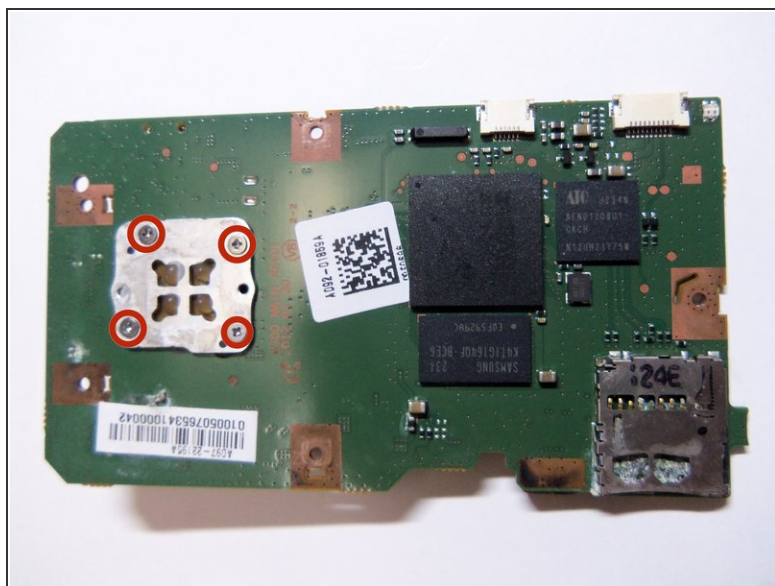
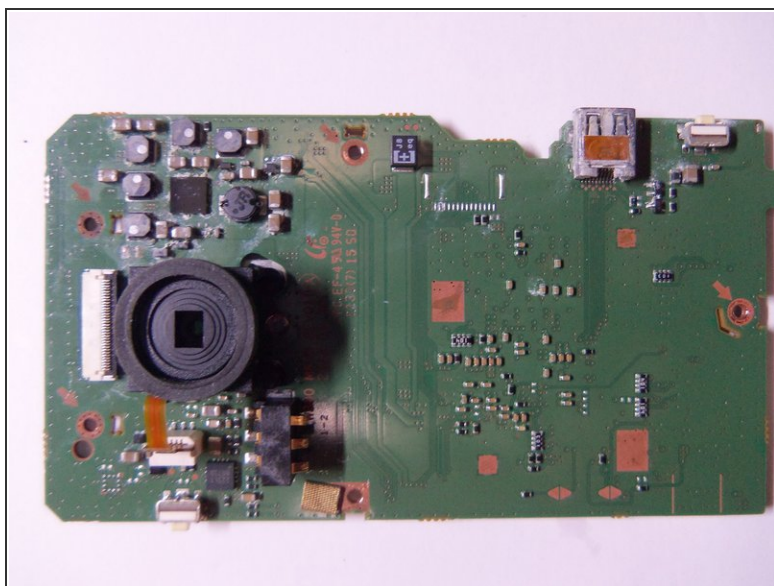
⚠ Be careful there is a wire ribbon holding the motherboard.

Step 10 — Disconnect wire ribbon.



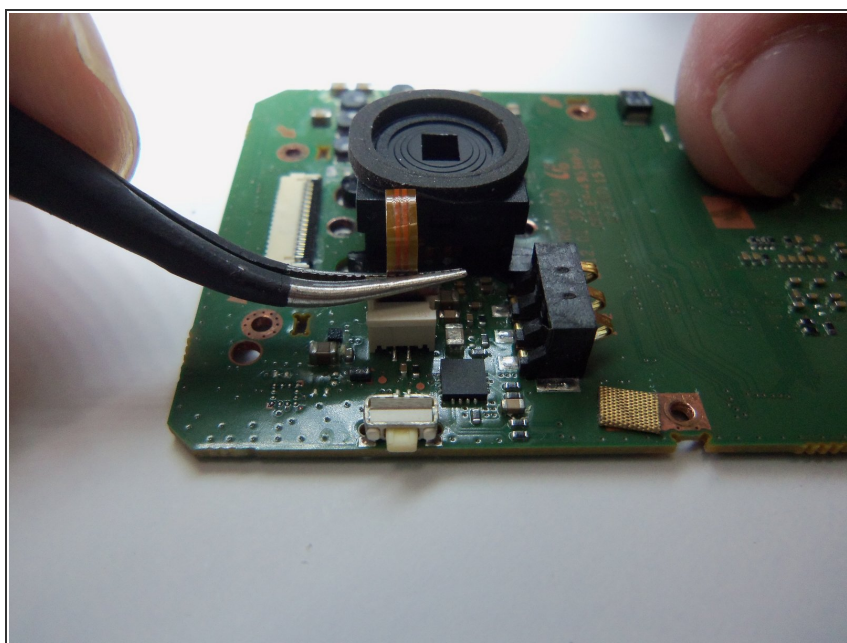
- Use tweezers to disconnect the wire as shown. This will loosen the motherboard from the rear case.

Step 11 — Lens screws



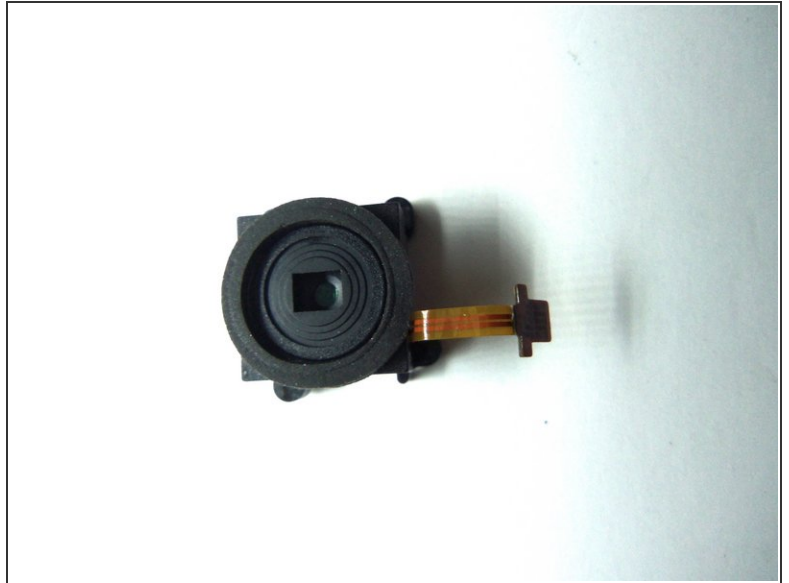
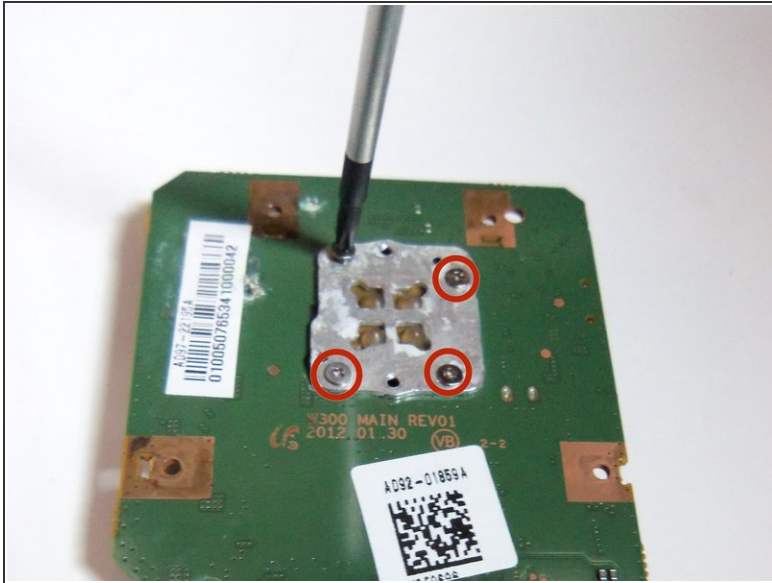
- Shows front of motherboard and rear of motherboard.
- Lens has 4 Phillips size 00 screws.

Step 12 — Remove wire ribbon



- Unplug the wire ribbon from the motherboard.

Step 13 — Remove lens screws



- Remove all 4 PH(00) screws, this will loosen the lens from the motherboard.

To reassemble your device, follow these instructions in reverse order.