



Wintec Filemate Clear 7" Battery Replacement

Replace your broken, dead battery with a new, working one.

Written By: Nicholas Ferraro



INTRODUCTION

in order to complete this guide, you will need to remove the battery, put a new one in its place, and solder the new connections onto the motherboard.



TOOLS:

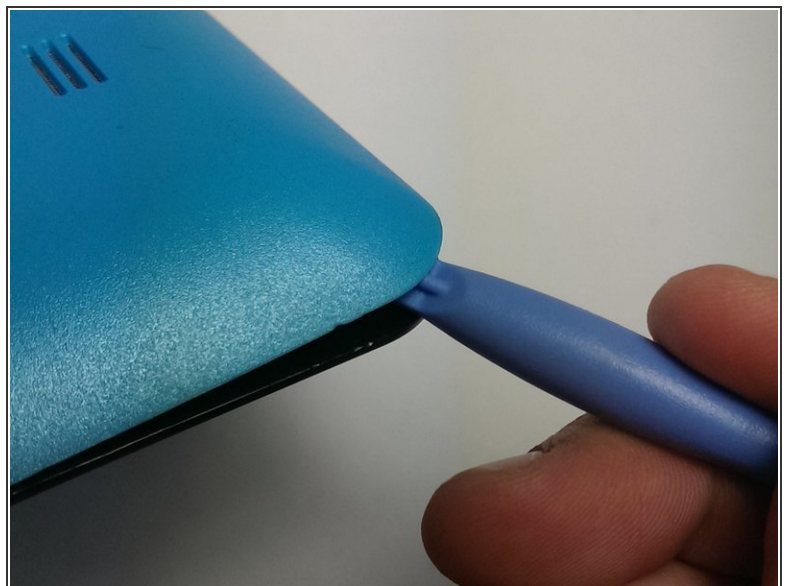
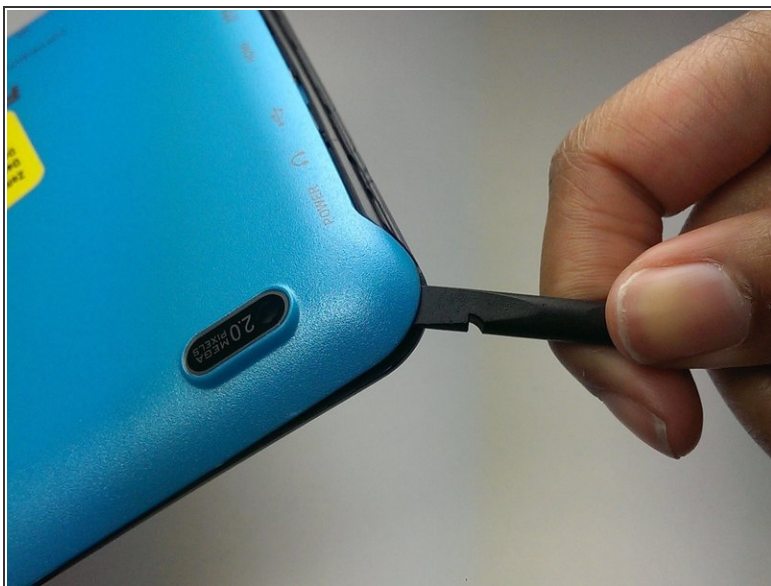
- [Spudger](#) (1)
 - [iFixit Opening Tools](#) (1)
 - [Tweezers](#) (1)
-

Step 1 — Remove the Backplate



- Locate the four corners of the backplate.

Step 2



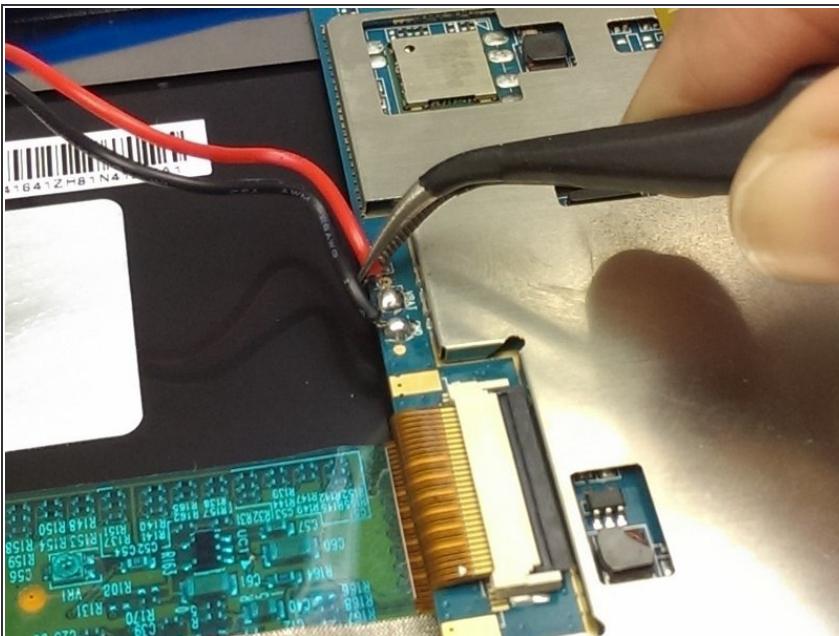
- Pry off the backplate by inserting a spudger or plastic opening tool into each corner and popping them open.

Step 3 — Remove the Battery



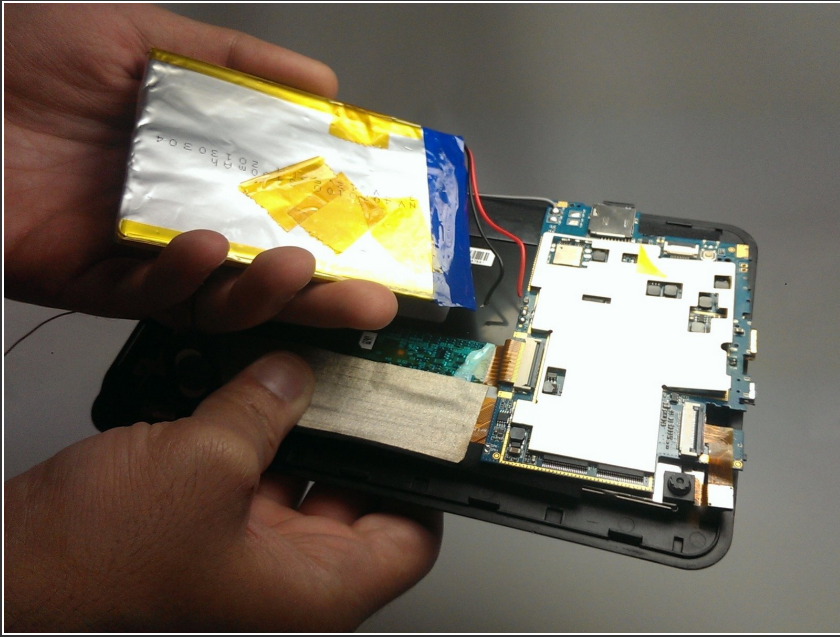
- Un-stick the battery from the motherboard assembly with the plastic opening tool.

Step 4



- Desolder the battery wires from the motherboard.
- ⓘ The tweezers pictured point to the two solder joints.

Step 5



- Fully remove the battery from the device.

To reassemble your device, glue the new battery to where the old one was and solder the new power connectors where the old ones were. Then follow the instructions in reverse order.