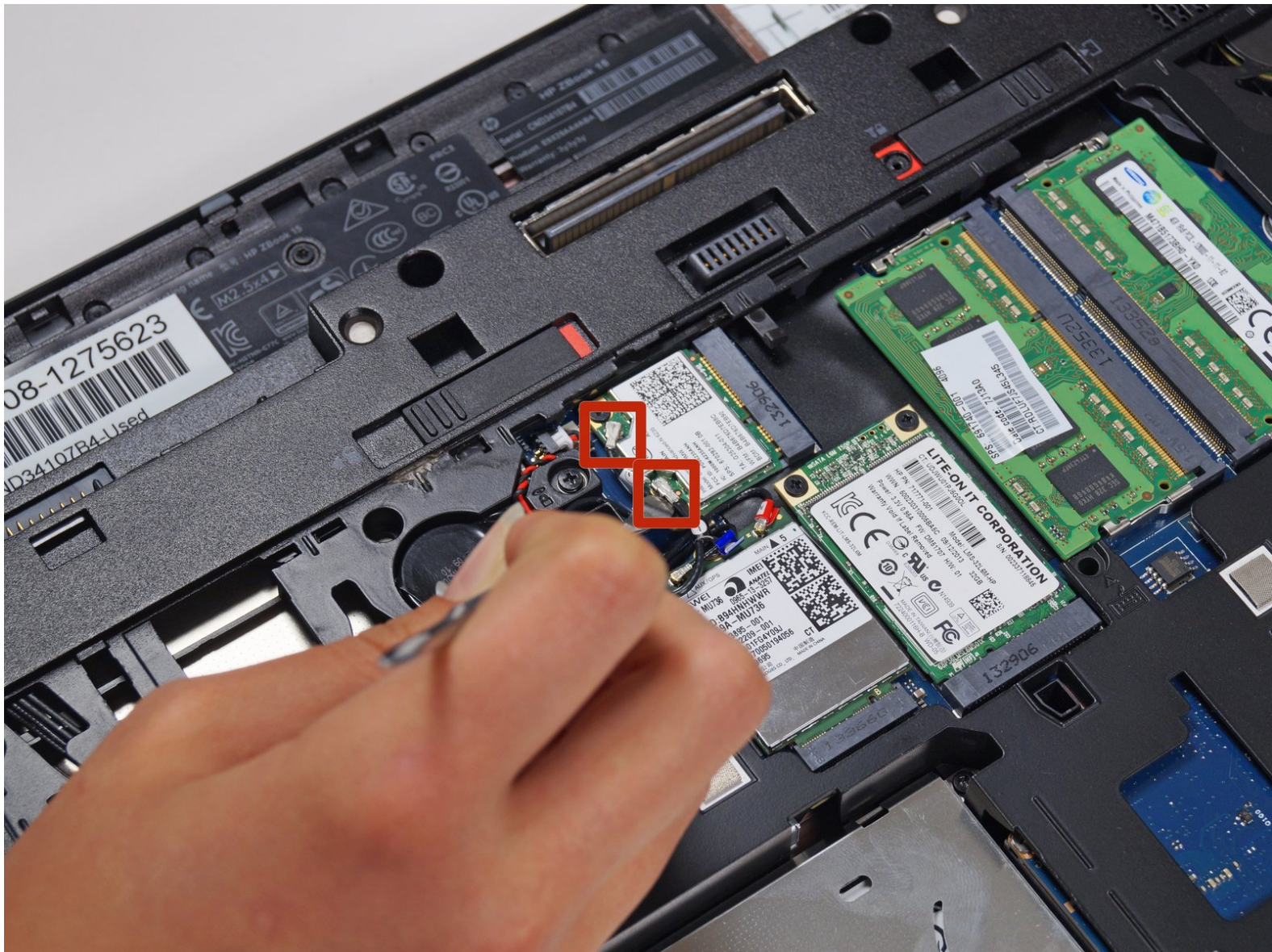




HP ZBook 15 Wi-Fi Card Replacement

This guide will demonstrate how to remove the wifi card from your computer.

Written By: Grant Terris



INTRODUCTION

Are you having problems with your wi-fi? [Here](#) is some more information about why you might not be able to connect to wireless networks. If you determine that your wi-fi card needs to be replaced, follow this replacement guide!



TOOLS:

- [Phillips #0 Screwdriver](#) (1)
-

Step 1 — Battery



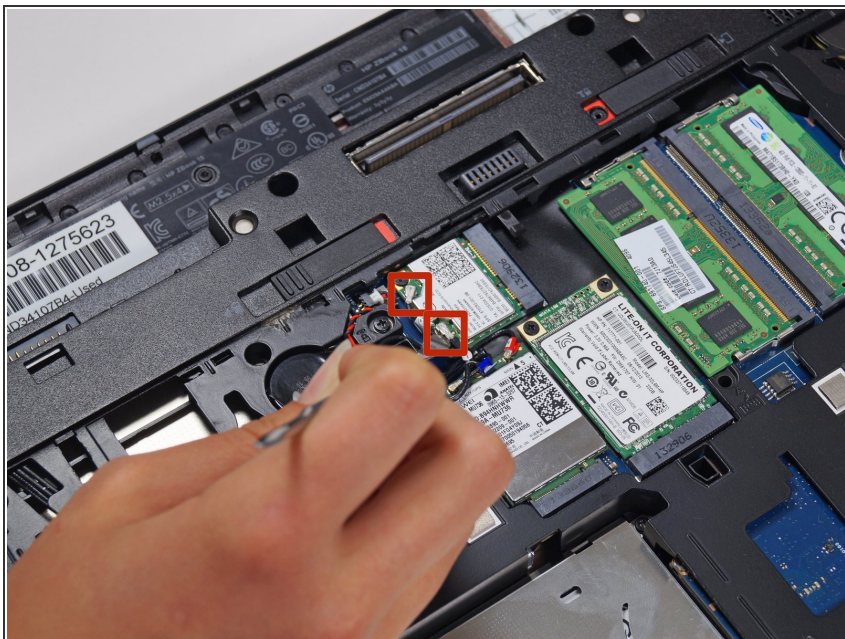
- Flip the laptop over.
- Slide the lever with the battery symbol beside it firmly until the battery pops out.
- Remove the battery from the laptop.

Step 2 — Back Cover



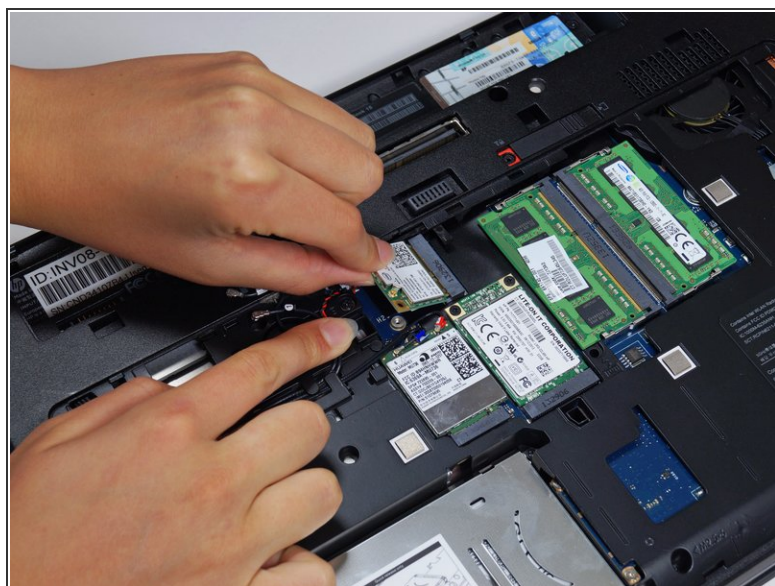
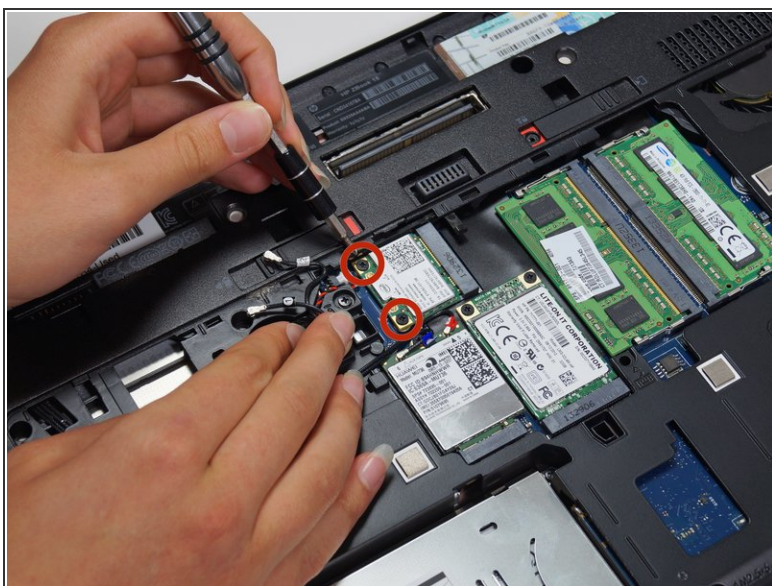
- Slide the right lever firmly to the right.
- Slide the cover towards yourself to remove it.

Step 3 — Wi-Fi Card



- Lift up the two tabs connected to wires.

Step 4



- Remove the two 3mm screws from the corners of the card with a Phillips #0 screwdriver.
- Lift the card up and slide it out to disconnect it.

To reassemble your device, follow these instructions in reverse order.