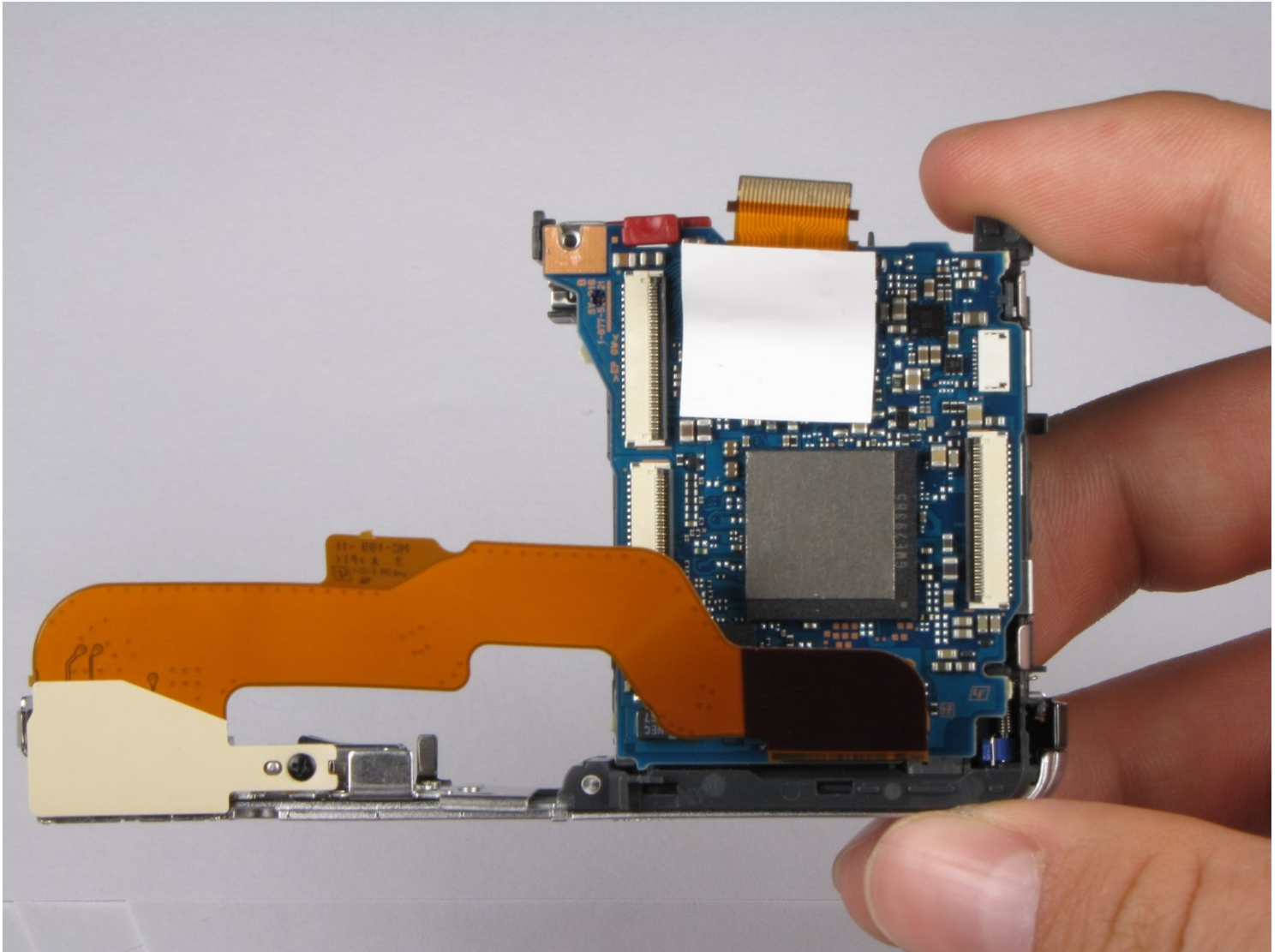




# Repairing Sony Cyber-shot DSC-W290 Motherboard

Thorough knowledge of disassembling the camera...

Written By: Evan Mayer



# INTRODUCTION

Thorough knowledge of disassembling the camera is necessary for replacing the motherboard.

---

## TOOLS:

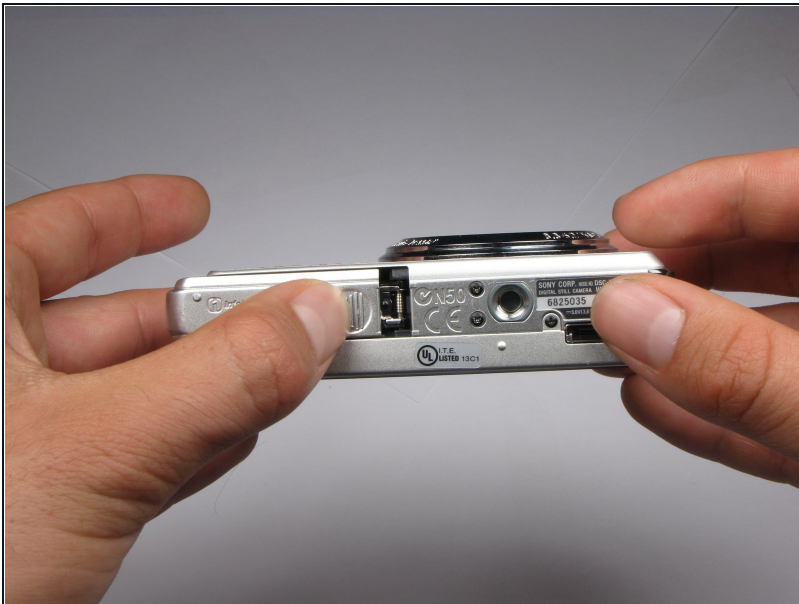
[Soldering Workstation](#) (1)  
[Phillips #0 Screwdriver](#) (1)  
[Tweezers](#) (1)  
[Desoldering Braid](#) (1)

## PARTS:

[Sony Cyber-shot DSC-W290 Logic Board](#) (1)

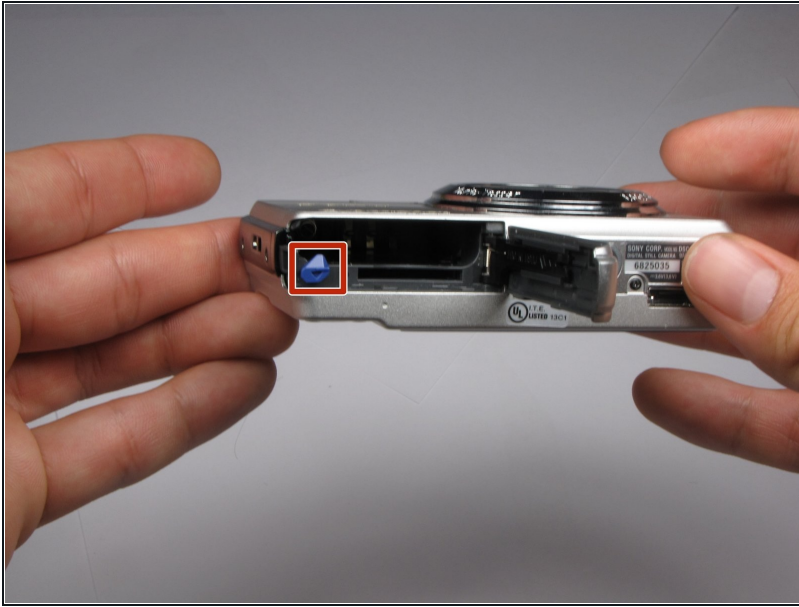
---

## Step 1 — Battery



- Find the hatch labeled "open" on the left side of the bottom of the camera.
- Slide the hatch in the direction that the arrow is pointing. The hatch will open outward on its own.

## Step 2



- Slide the blue locking tab to release the battery.
- Slide the battery out of the camera.

## Step 3 — Outer Casing



- Replace hatch and rotate camera 180 degrees. You should still be looking at the bottom of the camera.
- Remove the four 2.5mm Phillips #0 screws.



## Step 4



- Turn the camera so the left side-panel reading "5x Optical Zoom" faces you.
- Remove the two 2.5mm Phillips #0 screws.
- ① You may have to remove the screws with a pair of [tweezers](#) when the screws are almost out.

## Step 5



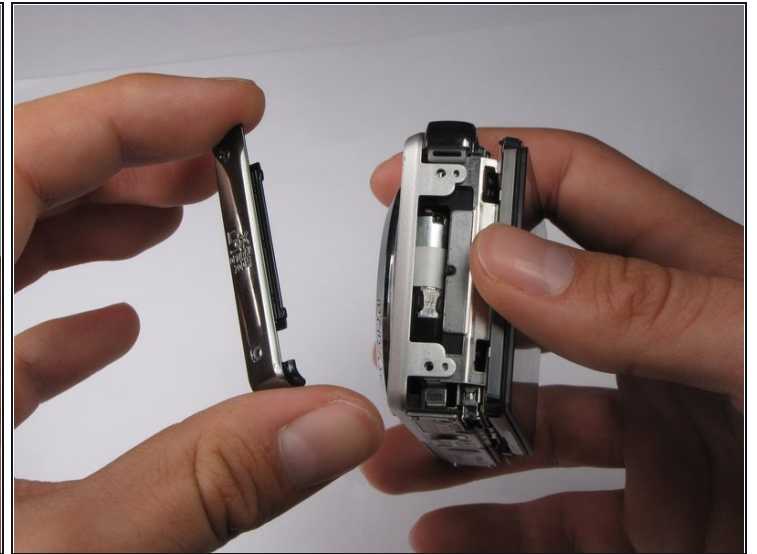
- Turn the camera so the right side faces you.
- Remove the two 2.5mm Phillips #0 screws.
- ① You may have to remove the screws with a pair of tweezers when the screws are almost out.

## Step 6



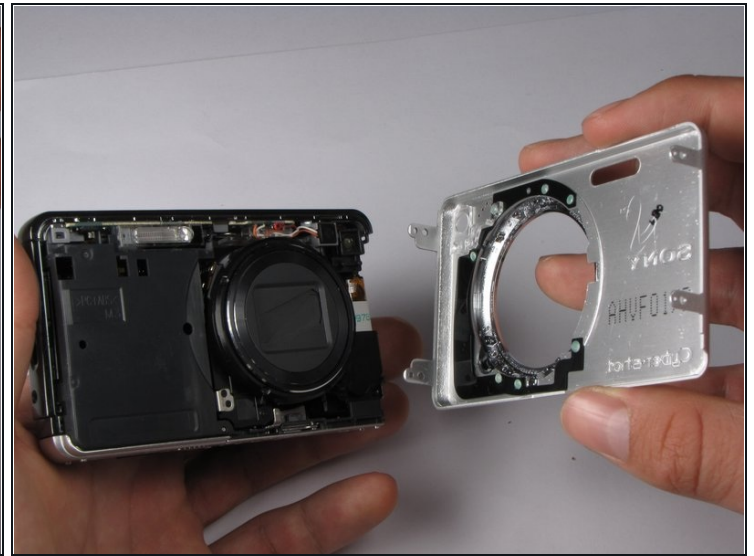
- Rotate camera so that the back is facing you.
- Pull the back casing directly away from the LCD screen.

## Step 7



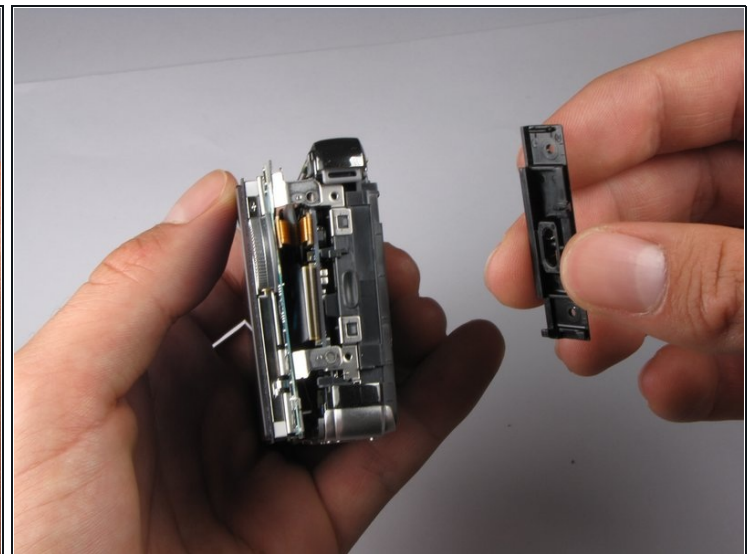
- Turn the camera so that the left side is facing you.
- Pull the left side-panel off of the camera.

## Step 8



- Turn camera so that the front of the camera is facing you.
  - Pull the front casing directly away from the camera.
- ⓘ The right side panel may fall off when you take the front panel off.

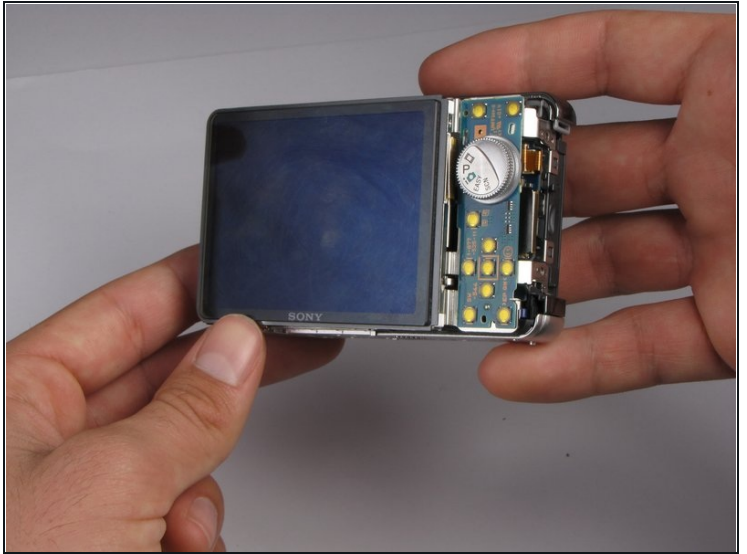
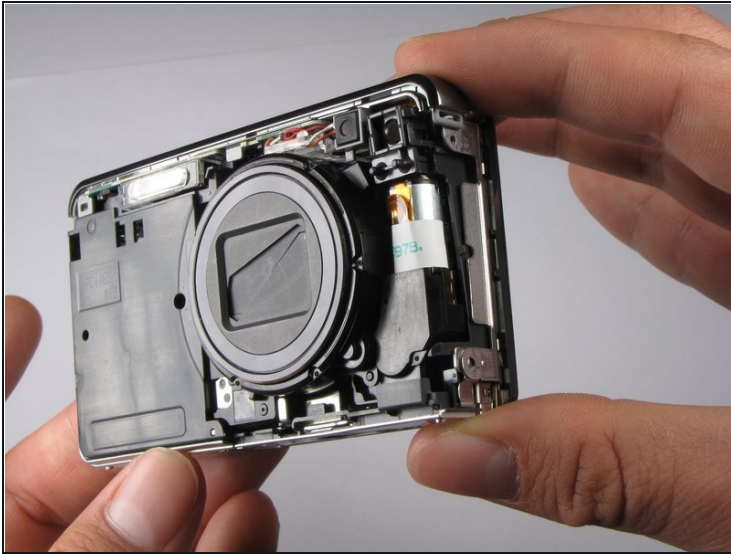
## Step 9



- Turn the camera so that the right side is facing you.
- Pull the right side-panel away from the rest of the camera.

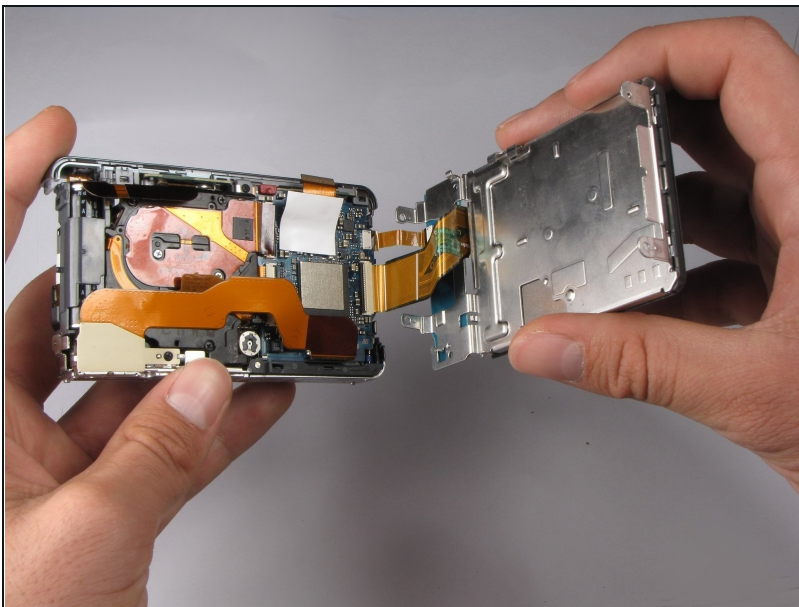


## Step 10



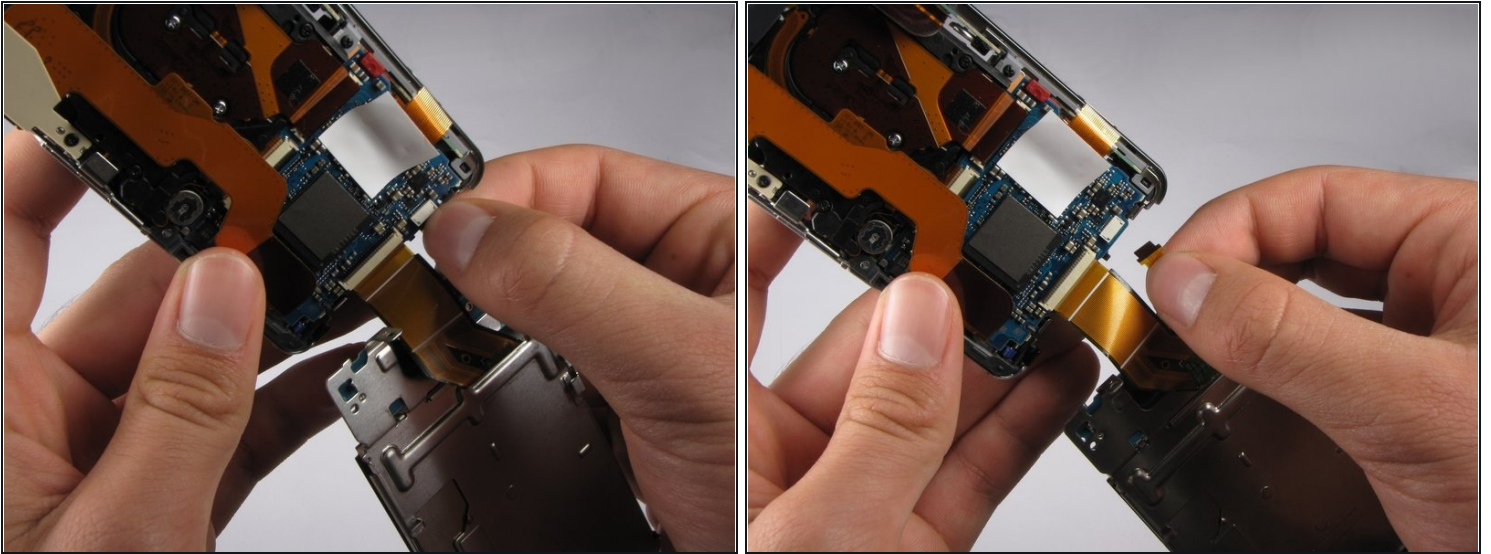
- This is what your camera should look like now that you have removed the casing from all sides.

## Step 11 — LCD Assembly



- Gently pull the LCD and its casing away from the motherboard as shown.
- ⓘ Be careful not to rip out any ribbon cables.

## Step 12



- Disconnect the small ribbon-wire by gently pulling on the small ribbon-wire where it connects with the motherboard.

⚠ Do *not* use excessive force to remove the wire because this may cause it to tear.

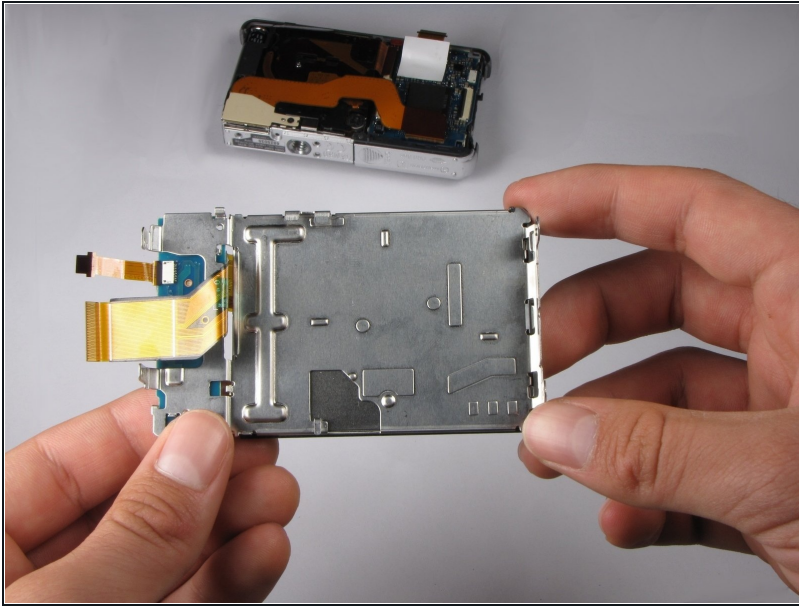
## Step 13



- Disconnect the large ribbon-wire by pulling on the large ribbon-wire where it connects to the motherboard.

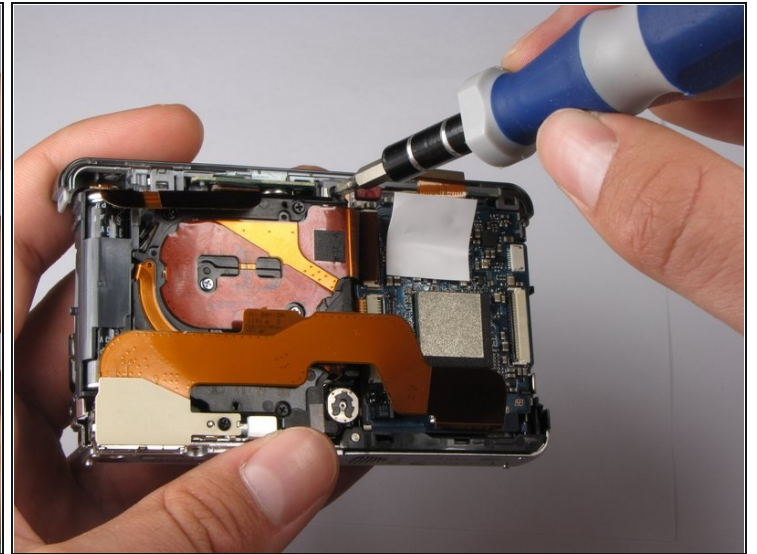
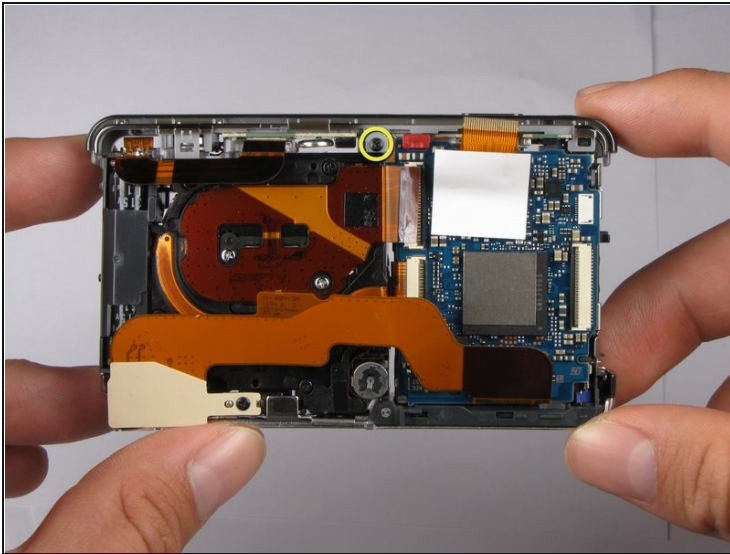


## Step 14



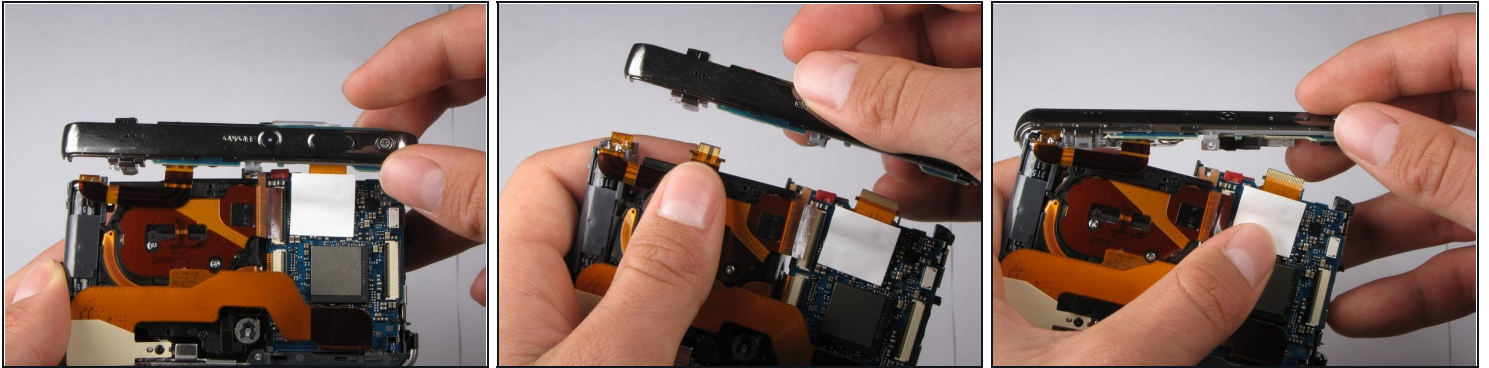
- Pull the LCD and its casing away from the rest of the camera.

## Step 15 — Flash Bulb Assembly



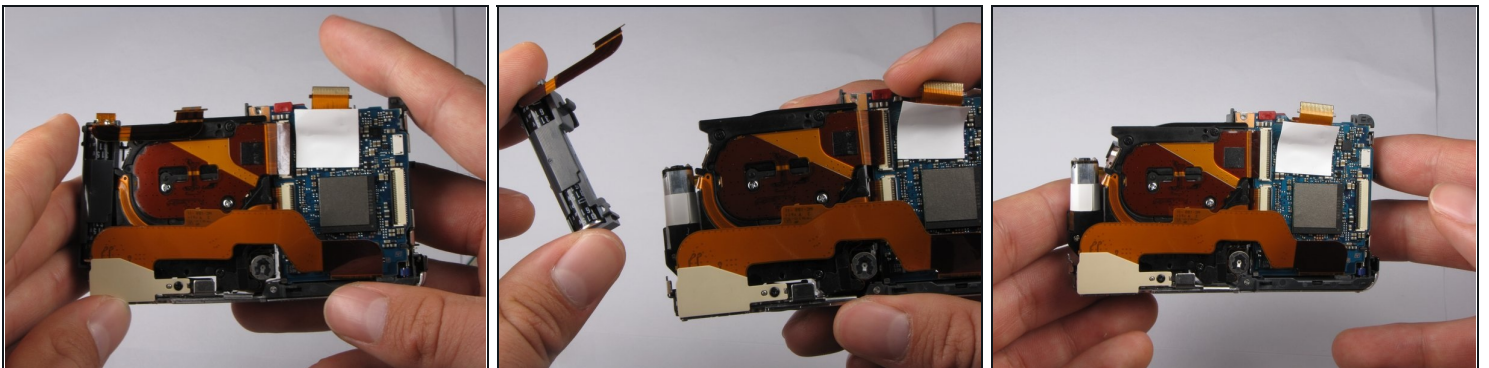
- Turn the camera so the back is facing you.
- Remove the 2.5mm Philips #0 screw at the top of the camera.

## Step 16



- Tilt top casing up and towards you.
- Carefully remove the right ribbon-wire from the top camera panel by pulling where the wire connects to the top.
- ⓘ Make sure to hold the camera with your thumb on the white square to ensure the ribbon-wire is not disconnected from the motherboard.
- Carefully remove the left ribbon-wire from the top camera panel by pulling where the wire connects to the top.

## Step 17 — Lens Assembly

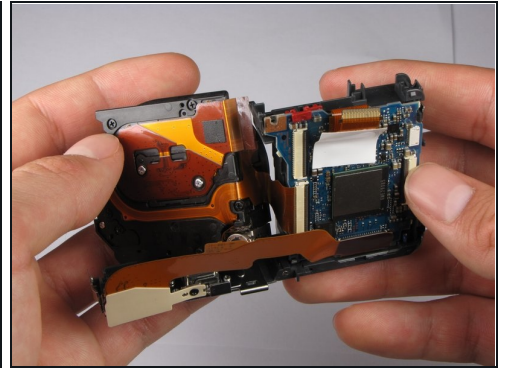
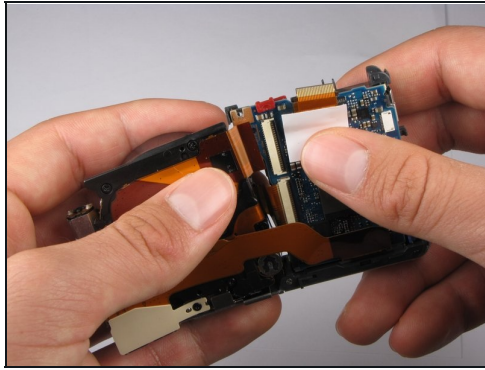
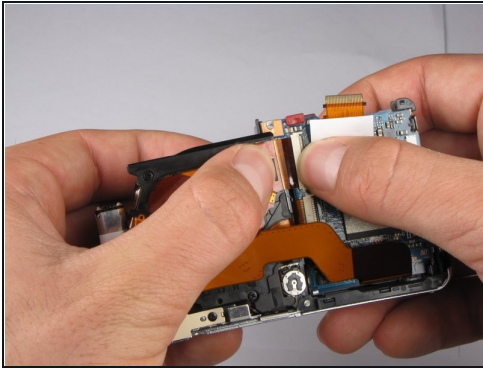


⚠ Flash capacitors are dangerous! Be *extremely* careful when removing the capacitor from the camera. You can get shocked *BADLY*!

- Remove the flash capacitor from the lens assembly.
- ⓘ Carefully place the flash capacitor away from where you are working.

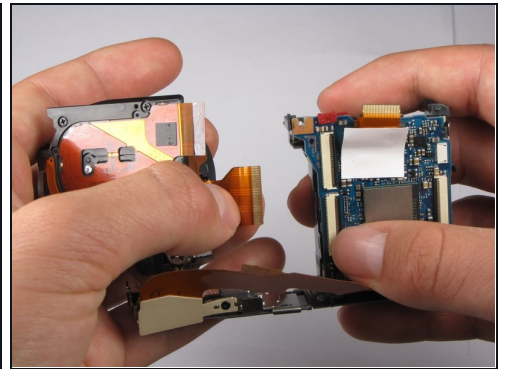
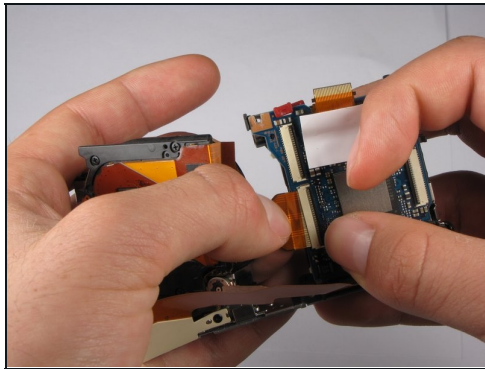
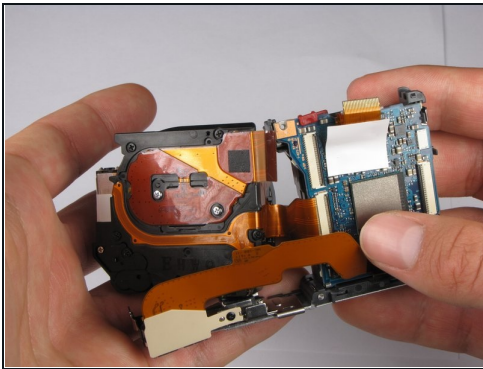


## Step 18



- Carefully disconnect the top ribbon-wire from the motherboard by pulling where the wire connects to the motherboard.

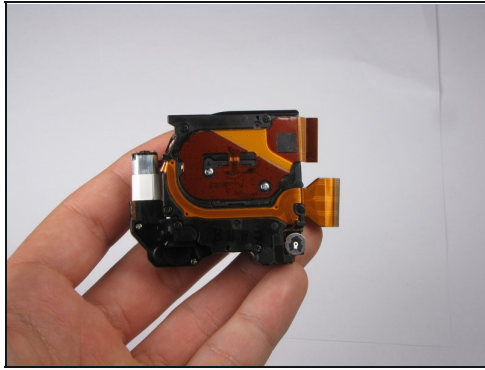
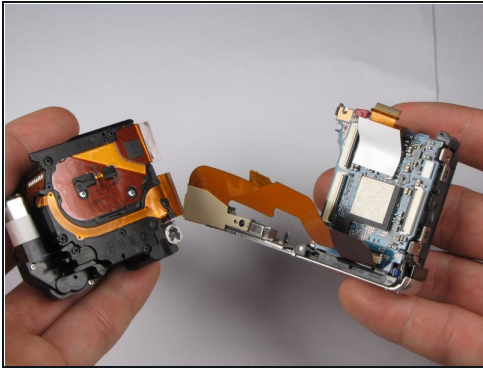
## Step 19



- Disconnect the top remaining ribbon-wire by carefully pulling at the base of where the wire connects to the motherboard.

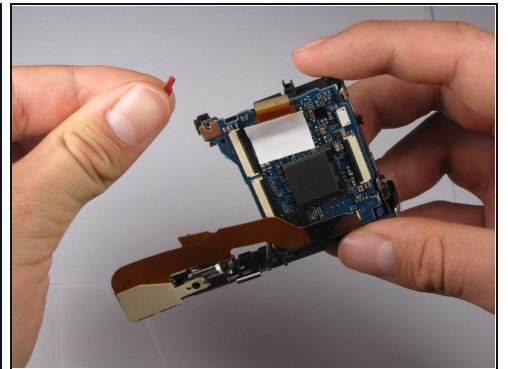
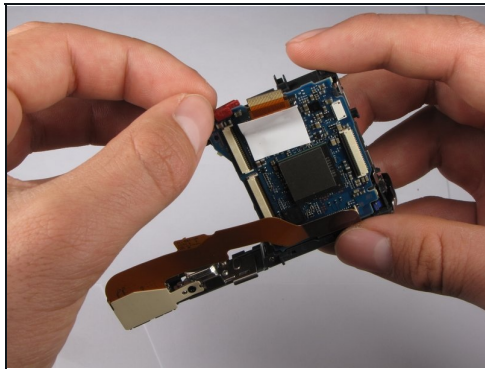
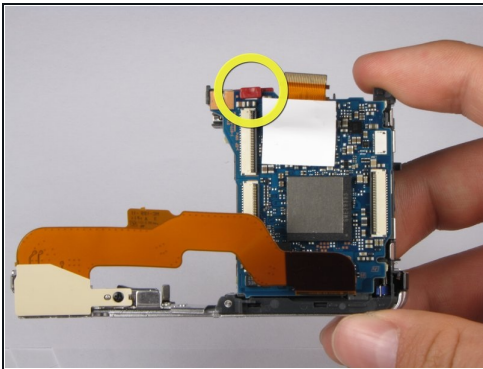


## Step 20



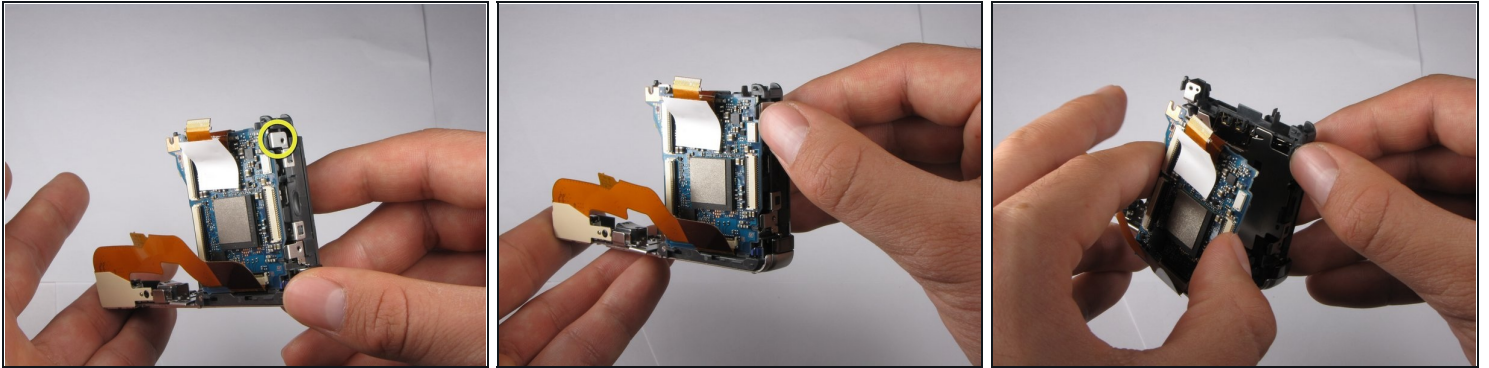
- Pull the Lens Assembly away from the motherboard.
- You have now removed the Lens Assembly from the camera.

## Step 21 — Motherboard



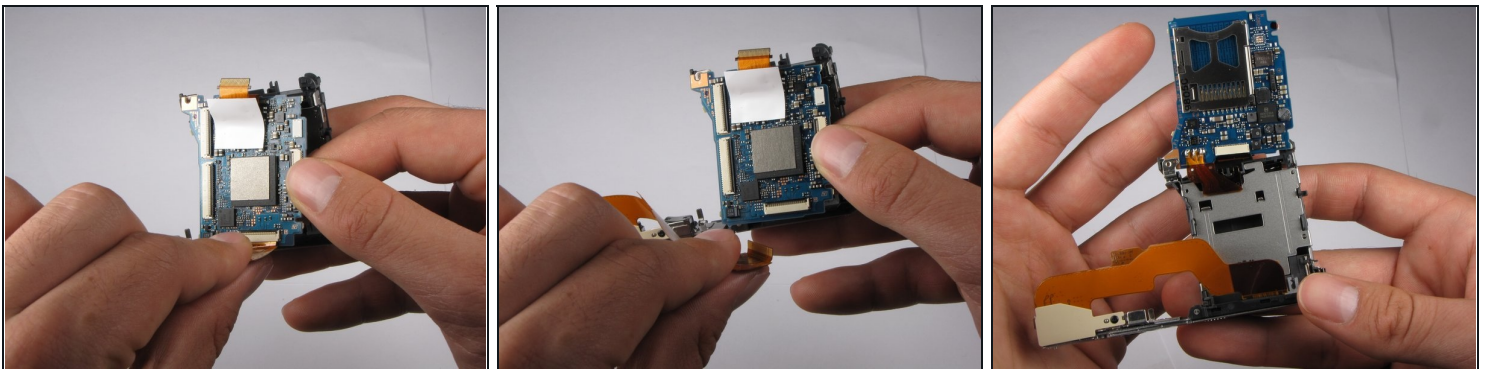
- Remove the red clip that holds the motherboard to its casing.

## Step 22



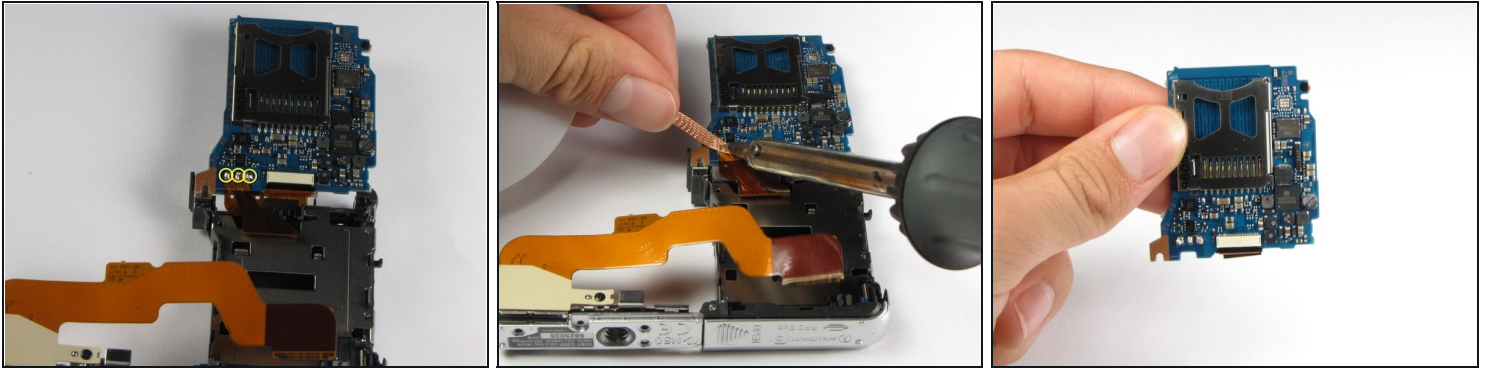
- Pull back the small gray clip located on the right side of the camera to release the motherboard from its casing.

## Step 23



- Lift the motherboard from the casing.
  - Carefully remove the large ribbon-wire by pulling the wire where it connects with the motherboard.
- ⓘ In order to completely remove the motherboard, you must desolder the small ribbon wire from the casing.

## Step 24



- Flip the motherboard up to turn it over.

⚠ When de-soldering, be careful not to burn yourself or the motherboard. You can damage or destroy the motherboard or the ribbon wire by applying too much heat.

- Carefully de-solder the three connectors from the ribbon wire to the motherboard.
- You have now removed the motherboard.

---

To reassemble your device, follow these instructions in reverse order.