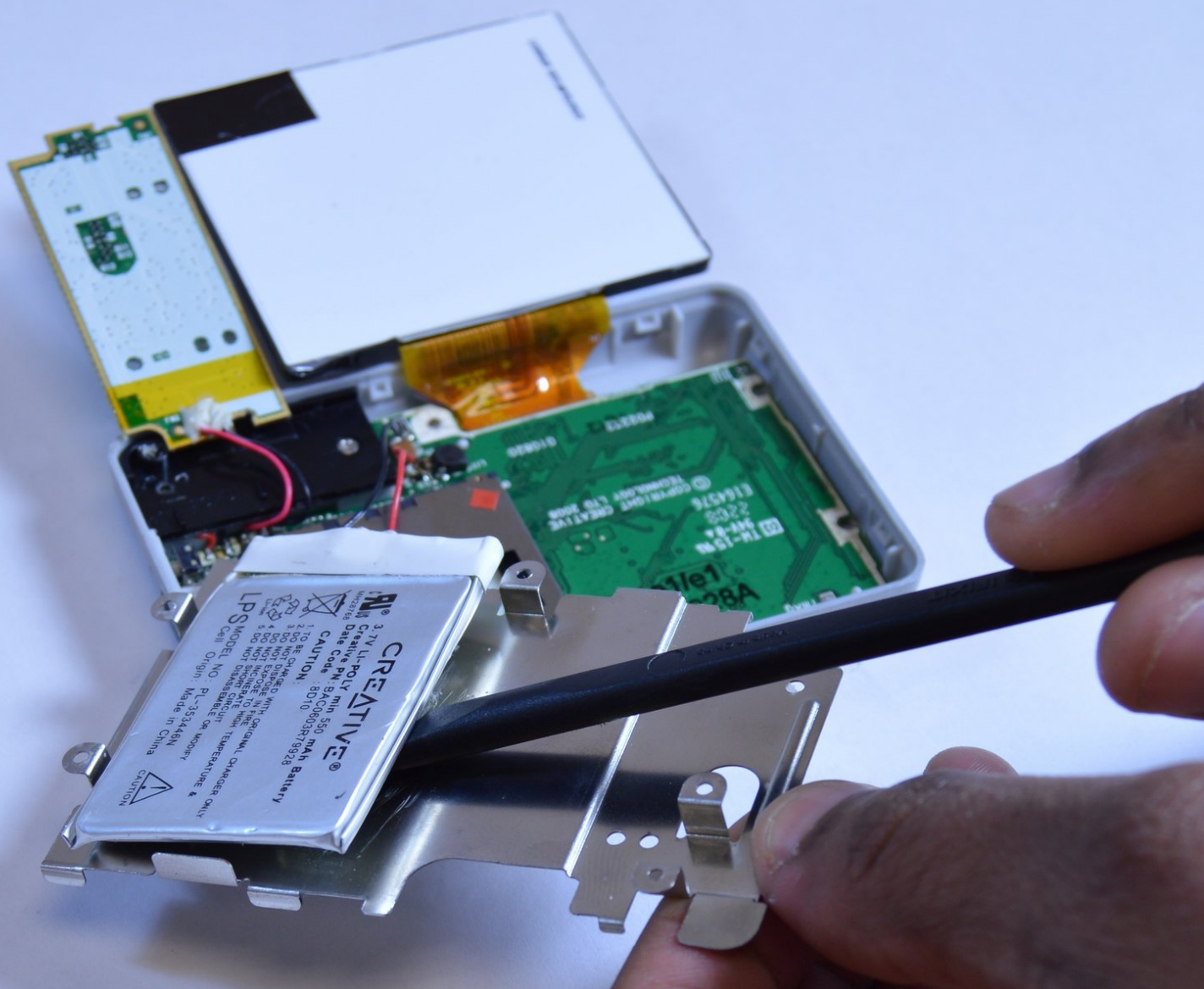




Replacing Creative Zen X-Fi Battery

Remove the battery from the midsection plate that holds it and disconnect it from the power supply.

Written By: Westley Courchene



INTRODUCTION

The battery stores the power that enables the device to run.

TOOLS:

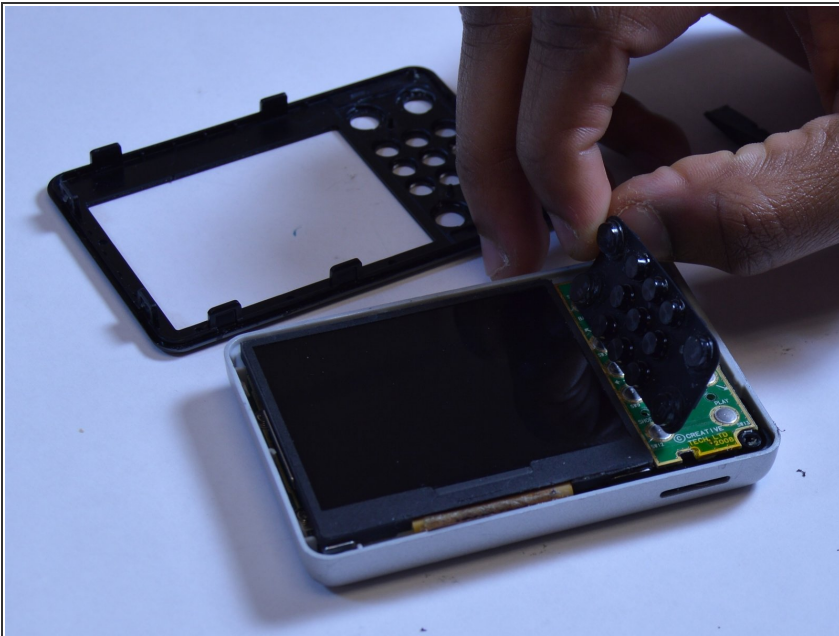
- [Soldering Iron](#) (1)
 - [Spudger](#) (1)
-

Step 1 — Detaching Front Case



- Using a spudger, wedge the tip between the front and back case to pry them apart.
- ⓘ Be careful to not apply excessive force since there are six fasteners on the screen's side that holds the cases firmly together.

Step 2 — Rubber Button Cover



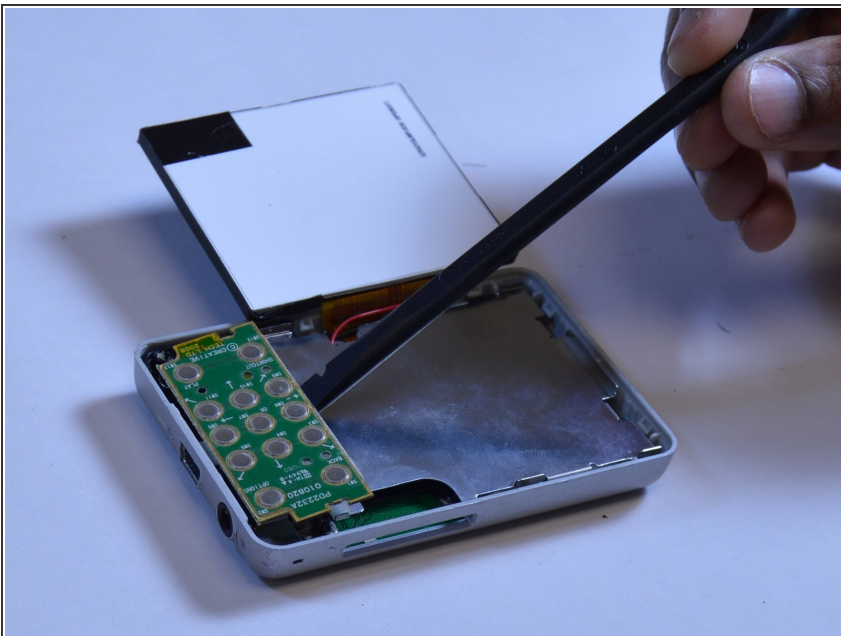
- The black rubber button pad can be removed by simply picking it up.

Step 3 — Button Input Chip Part 1



- Flip the LCD screen off the midsection plate to gain access to the space around the input button chip.

Step 4 — Button Input Chip



- Using a spudger, pry off the button input chip from the mid-section of the device. To gain best leverage,

start at the bottom right corner and level your way up the side of the chip.

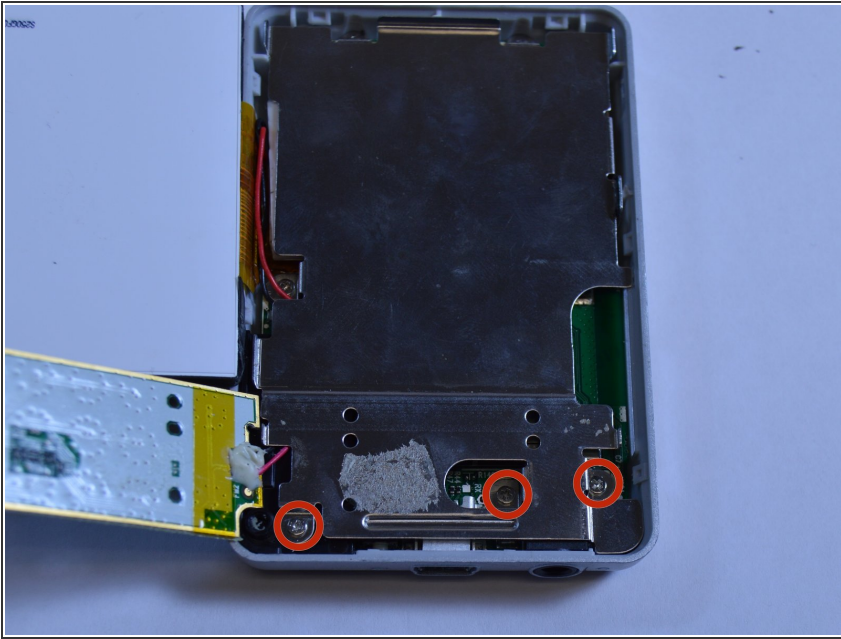
- ⓘ Be aware that the button input chip is glued to the mid-section, so some extra force may be required.

Step 5 — Access Midsection Plate



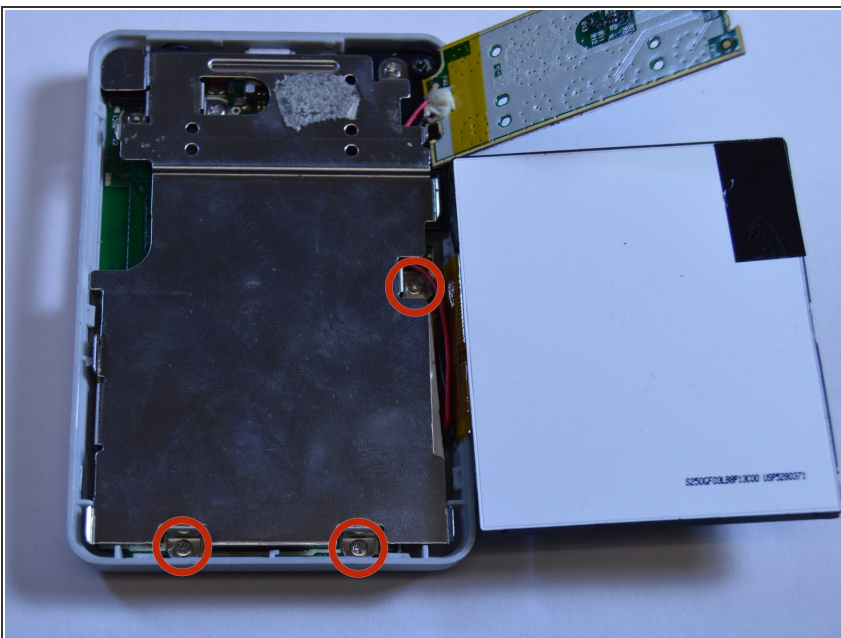
- Lift open the LCD screen and button input chip to access the entire midsection plate.

Step 6 — Unscrew below Button Chip



- Use a Phillips Head screwdriver to unscrew the three 3/16 inch screws that were underneath the button input chip.

Step 7 — Unscrew below LCD Screen



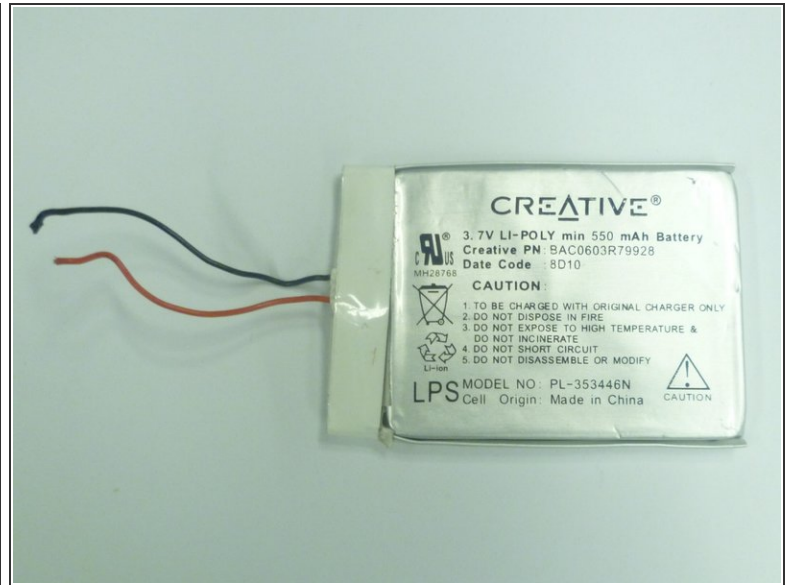
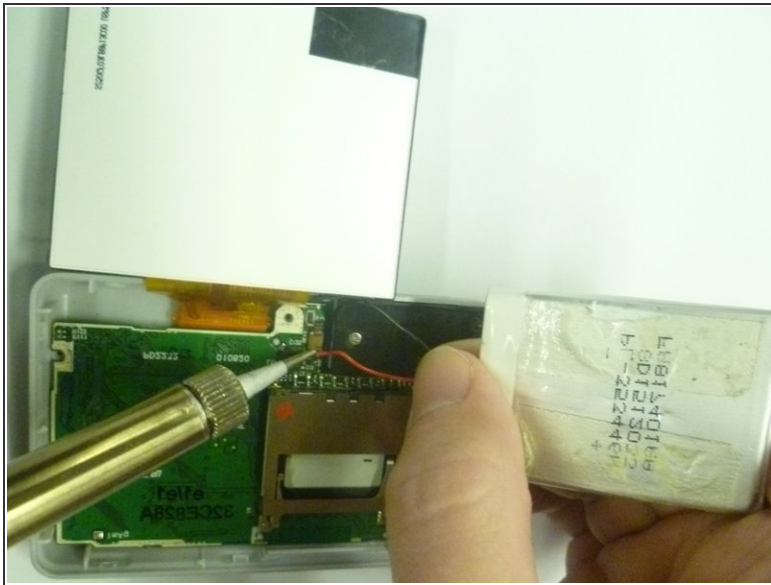
- Use a Phillips Head screwdriver to unscrew the three 3/16 inch screws that were underneath the LCD screen.

Step 8 — Separating the Battery



- Use a spudger to pry the battery from the midsection plate.
- ⓘ There is adhesive glue underneath the battery, so additional force might be required to separate the battery.

Step 9 — Disconnecting Power Supply



- Locate the soldering joint connecting the battery wires to the power supply, marked by the letters "PS" on the motherboard.
- Hold the battery wires in place so that access to the soldering joints is not blocked.
- ⚠ When using a soldering iron, keep your hands and fingers as far as possible from the iron's tip to avoid burning your skin.
- Using a soldering iron, melt the solder connecting the red wire to the motherboard. Do the same action to the black wire.

To reassemble your device, follow these instructions in reverse order.