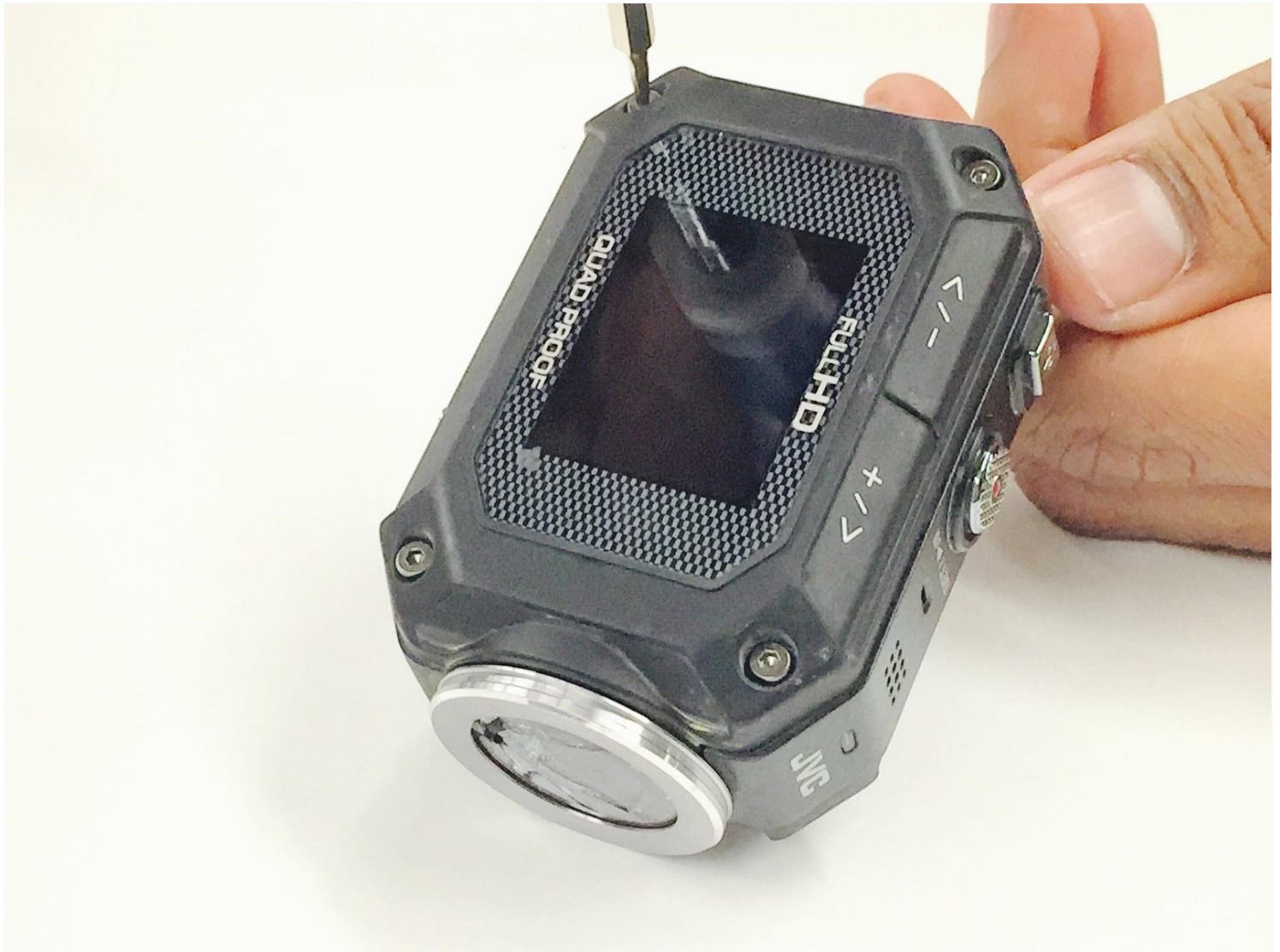




JVC Adixxion GC-XA1BU LCD Cover Replacement

To complete this guide, you will need to...

Written By: Christina Michelle Johnson



INTRODUCTION

To complete this guide, you will need to purchase a new LCD cover and make sure that you have the tools listed. It is always good practice to make sure that the device is completely powered off and remove the battery before attempting any repairs.

TOOLS:

[Phillips #00 Screwdriver](#) (1)

[Tweezers](#) (1)

[T6 Torx Screwdriver](#) (1)

Step 1 — Battery



- Find the side of the camera that looks like this.

Step 2



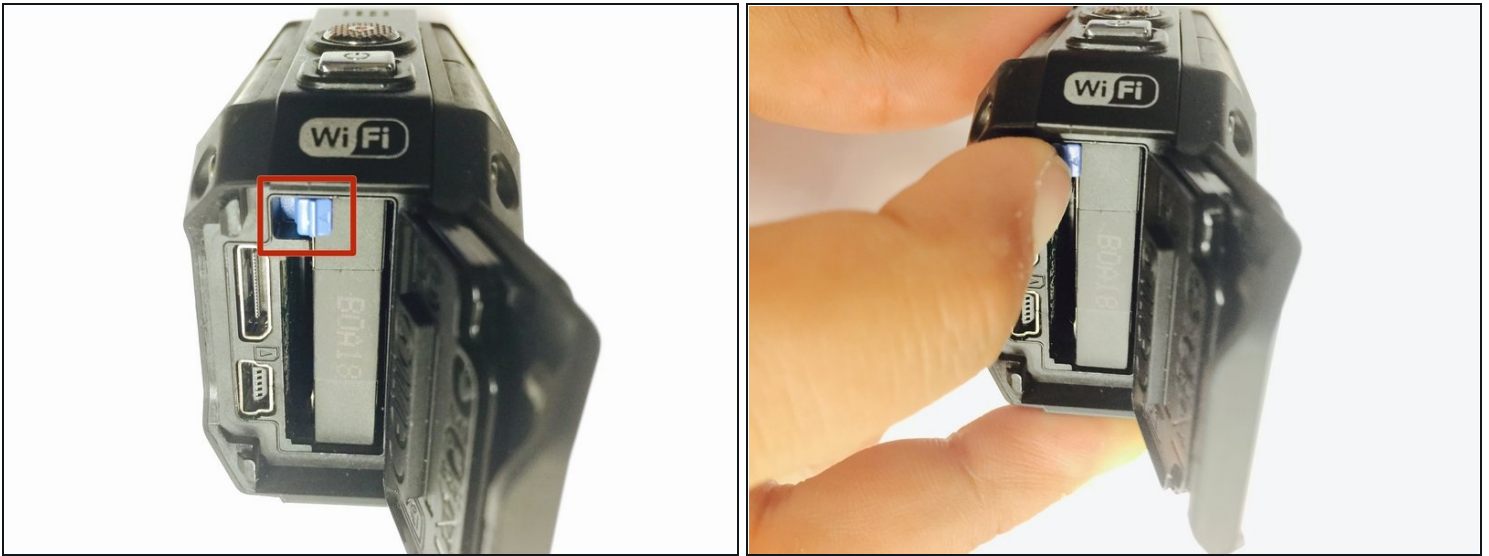
- Push down on the black switch.

Step 3



- While still pushing down on the black switch, slide back the battery cover (see photo for direction).

Step 4



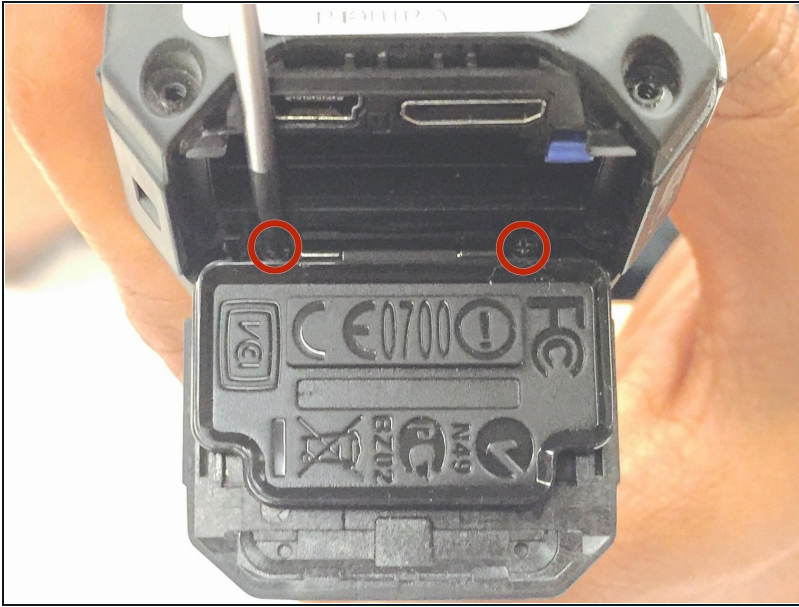
- Push the cover up to open the battery compartment, and then push the blue battery release switch.

Step 5



- You can now take the battery out of the camera.

Step 6 — Battery Cover



- After removing the battery, take out the two Phillips screws (4mm headsize x 3mm length) screws. You can now remove the battery cover.

Step 7 — LCD Cover



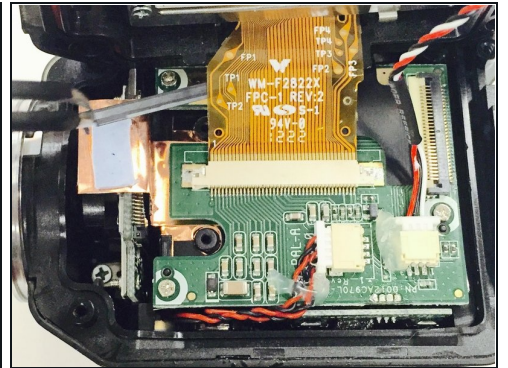
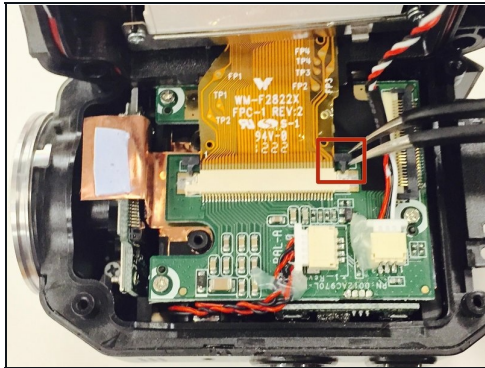
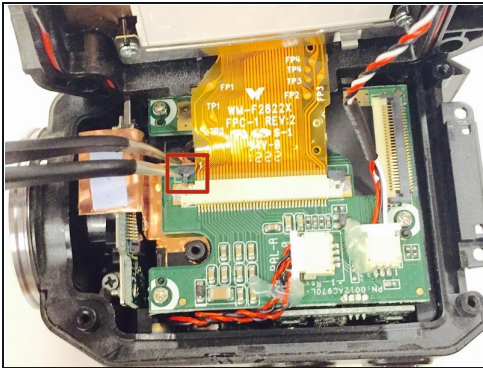
- Using a 1x1xH1.5 torx screwdriver, remove the 8 screws (5mm headsize / 4mm length) from the corners of both the front and back of the camera (4 screws on each side).

Step 8



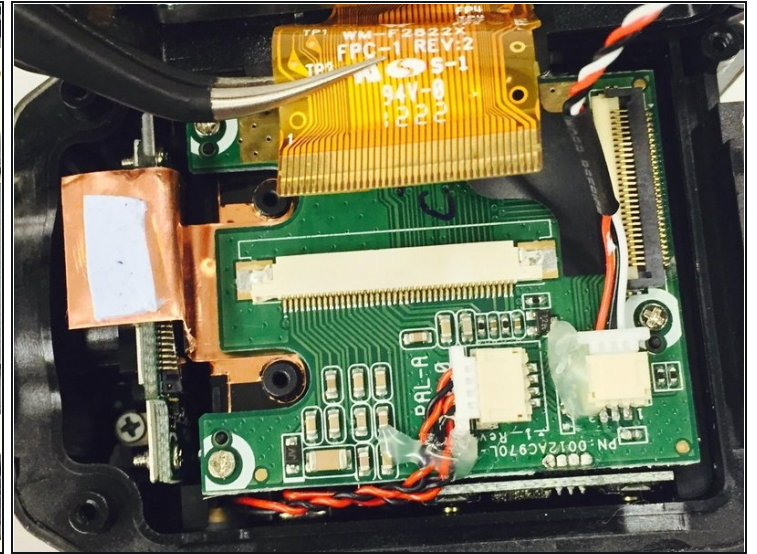
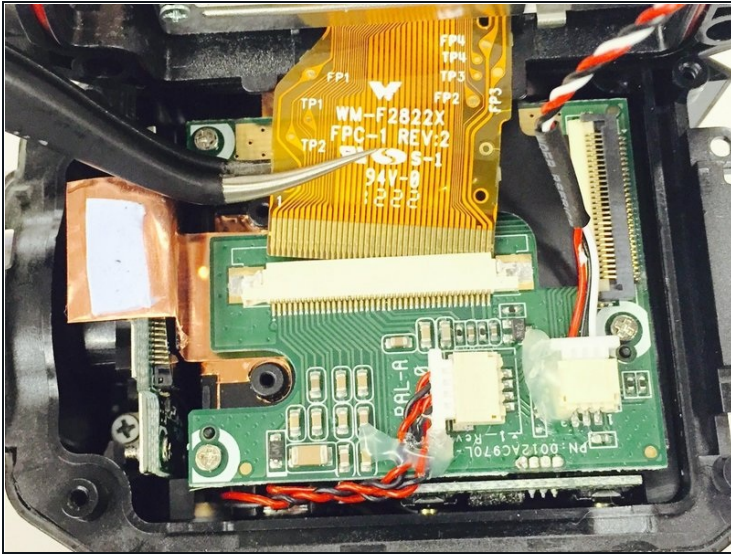
- Carefully lift open the camera from the side of the device with the record and play buttons. Then remove the black cover tape by gently peeling it off. Make sure to save this tape as you may need it when you re-assemble the device.

Step 9



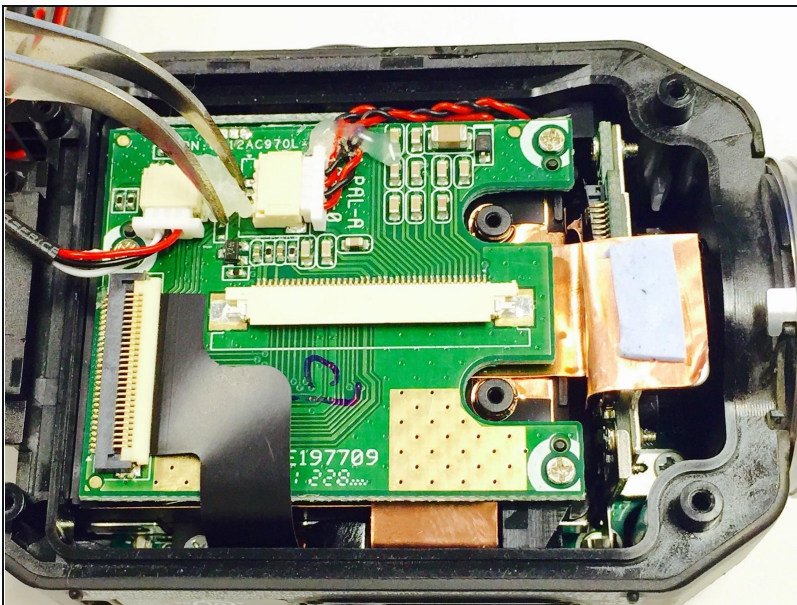
- Using the [tweezers](#), carefully push up the left and right sides of the cable ribbon clip. Use the tweezers to lift up and remove the clip.

Step 10



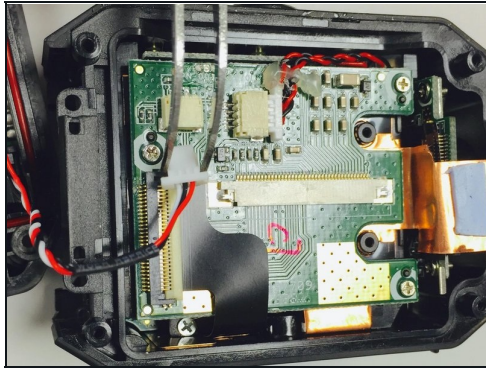
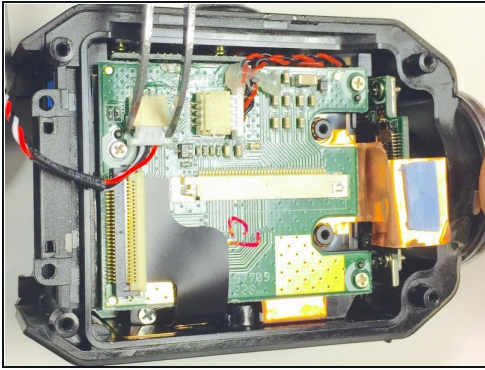
- Using the tweezers, carefully remove the ribbon cable by gently grasping it and pulling up.

Step 11



- Turn the camera 180 degrees, and gently remove the glue from the connector as shown in the photo. Make sure you save the glue as you may need it when re-assembling your device.

Step 12



- Now take out the connector by pulling the white clip out of the casing (as shown in the photos). This will will disconnect the screen from the main cable, allowing you to attach your new LCD cover.

To reassemble your device, follow these instructions in reverse order.