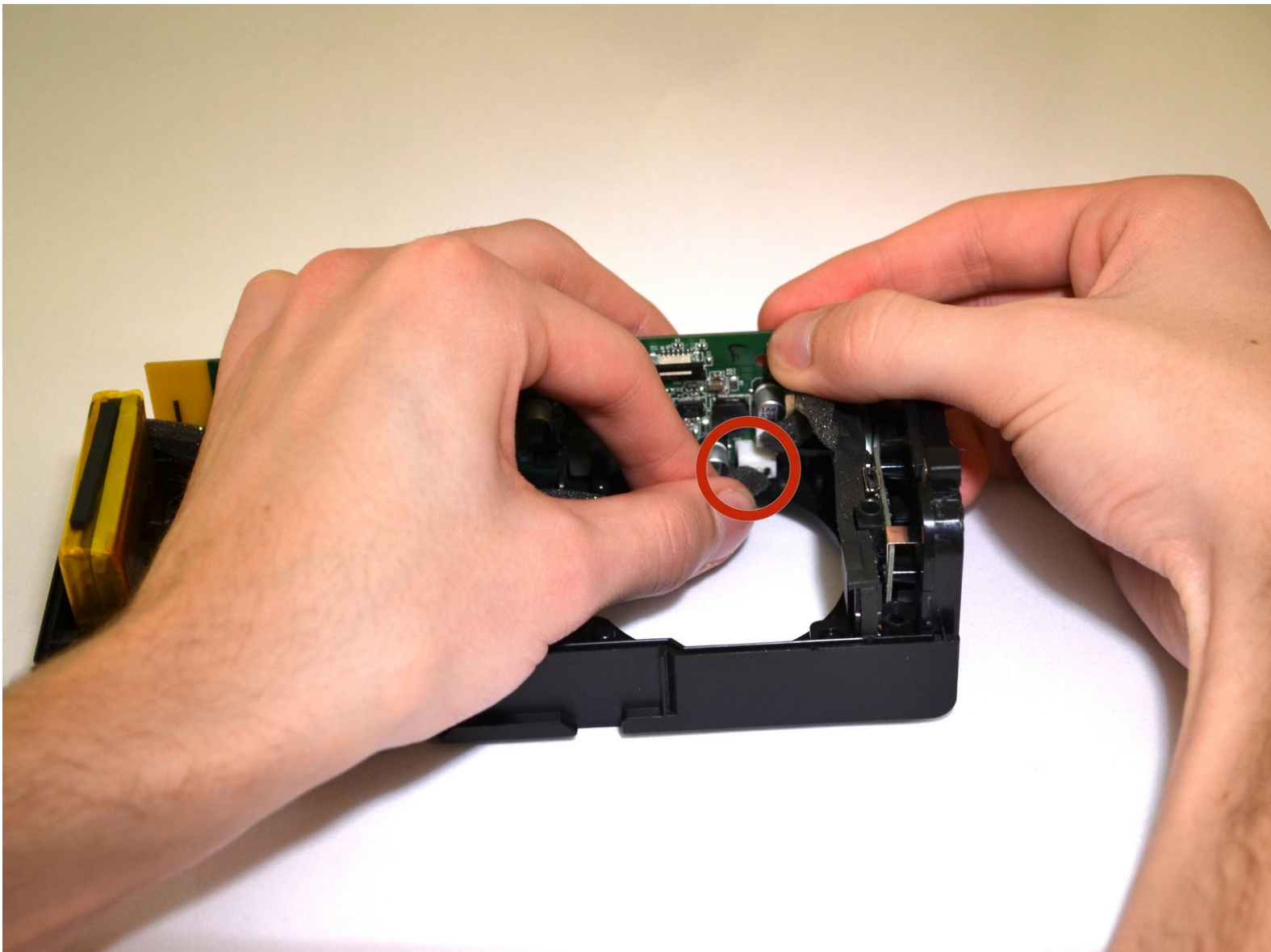




Skullcandy Air Raid Battery Replacement

This guide will show you how to replace a battery for the Skullcandy Air Raid

Written By: Kristin



INTRODUCTION

If your Skullcandy Air Raid will not maintain power even after charging, it may be time to replace the battery.

TOOLS:

- [iFixit Opening Tools](#) (1)
 - [Phillips #00 Screwdriver](#) (1)
 - [Phillips #000 Screwdriver](#) (1)
 - [T6 Torx Screwdriver](#) (1)
-

Step 1 — Rubber Cover



- Starting with the corners, gently pull the rubber cover off of the device.

Step 2 — Handle



- Using the T-6 hexagonal screwdriver, unscrew the four 10mm #6 hex screws on the right side of the device.
- Remove the handle from the device.

Step 3 — Front Plate



- Unscrew the two screws on the left side of the device using the phillips #00 screwdriver.
 - One 5mm Phillips screw.
 - One 8mm Phillips screw.

Step 4



- Gently pull the sides of the front plate outwards from the device.
- Pull up on the front plate to remove it from the device.

Step 5 — Speakers



- Using a #000 Philips Screwdriver, unscrew the four 8 mm Philips screws from each corner of both speakers (eight 8 mm Philips screws total).

Step 6



- Using the plastic opening tool, pry around edges of the speaker to loosen glue contact with front plate.
- ⓘ If you are unable to loosen glue contact using the plastic opening tool, use a heat gun to assist in removal.

Step 7



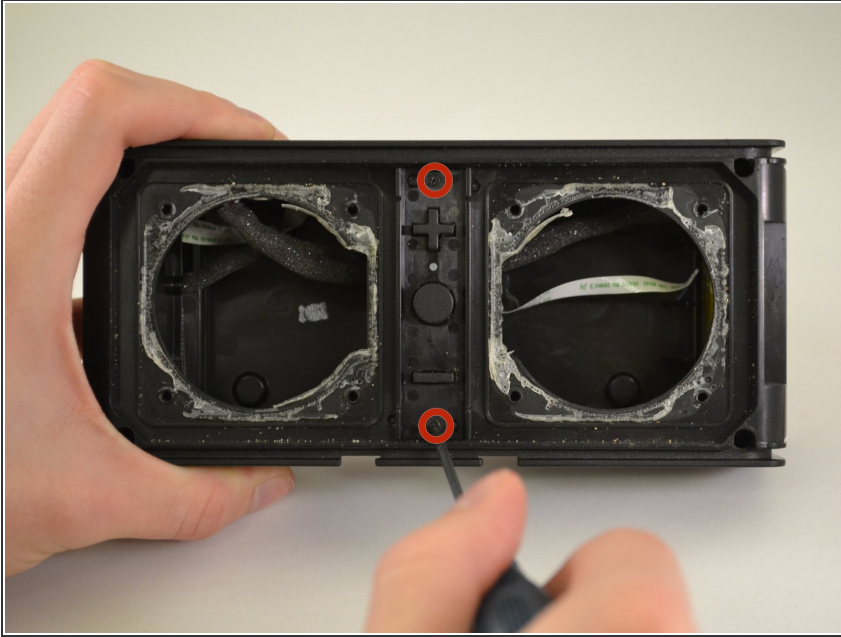
- Lift the speaker out of the device.
- ⚠ Be aware of the connection with the ribbon cable.
- ⓘ For reassembly, ensure proper orientation of the cable plug.

Step 8



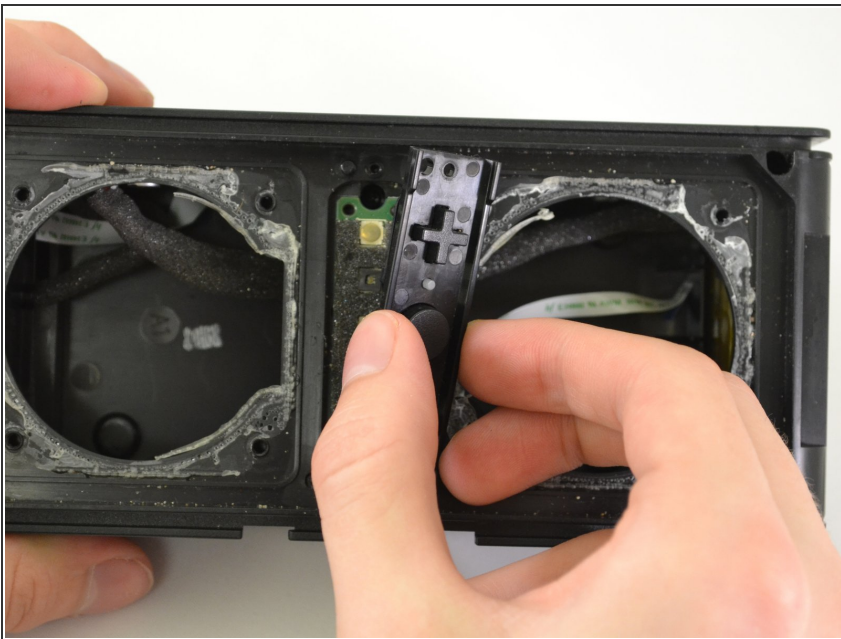
- Firmly pull on the end of ribbon cable to disconnect the speaker from the motherboard.

Step 9 — Control Buttons



- Using a Phillips #00 Precision Screwdriver, unscrew two 6 mm screws from the middle of the panel, above and below volume buttons.

Step 10



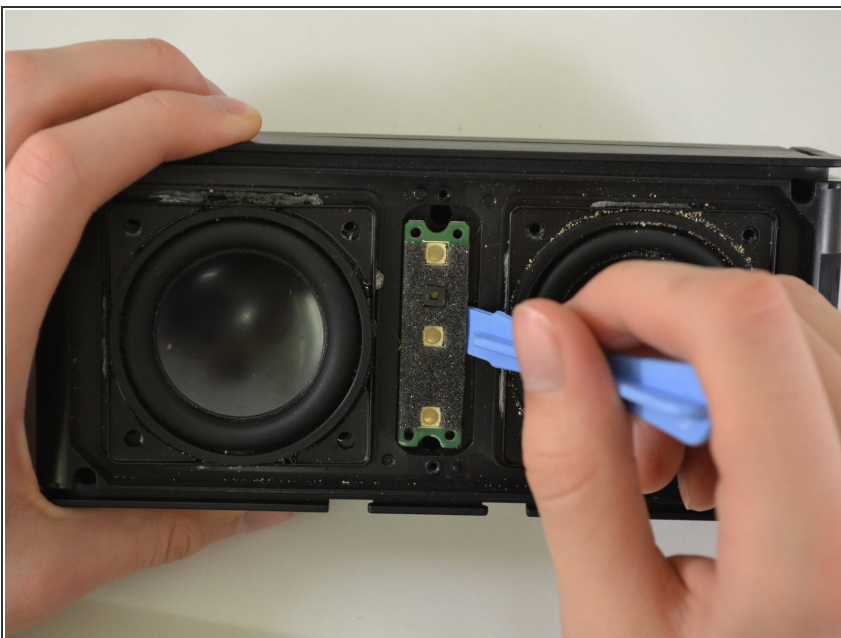
- Lift the button panel.

Step 11 — Button Motherboard



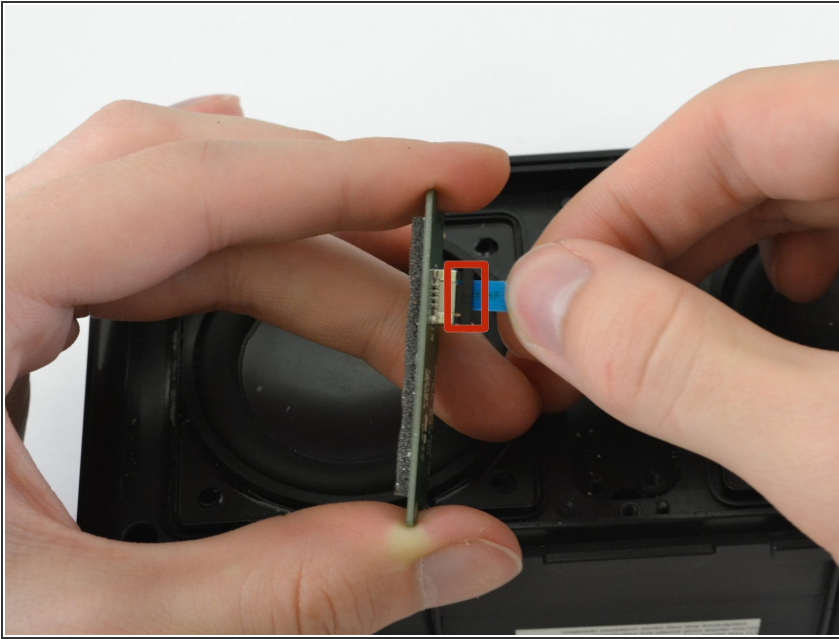
- Using a Phillips #00 Precision Screwdriver, unscrew two 6 mm screws from the button motherboard.

Step 12



- Using a plastic opening tool, pry the button motherboard to detach it from the device.
- ⓘ The button motherboard is connected to a ribbon cable inside the device.

Step 13 — Ribbon Cable



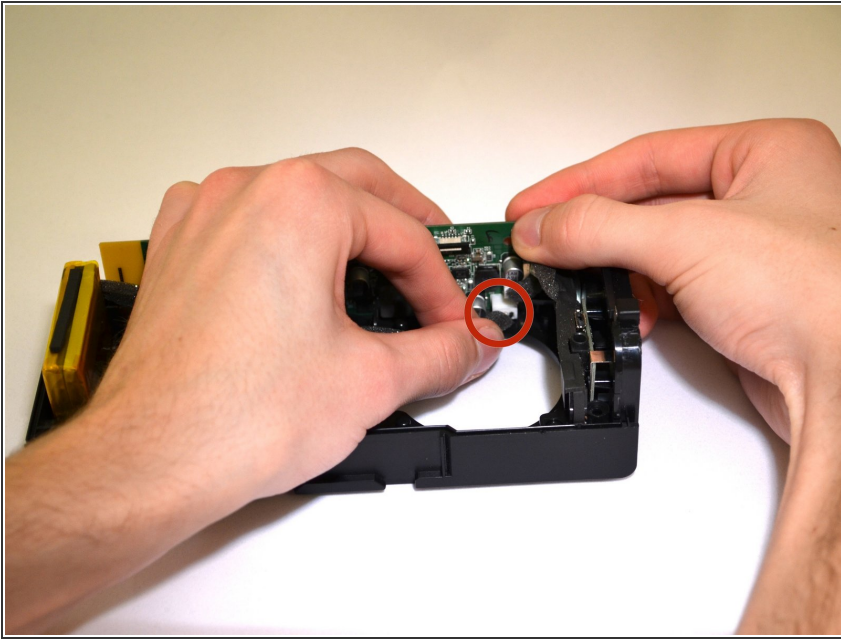
- Pull the black ribbon cord attachment away from the motherboard.
- Pull on the cable until it releases from the back of the motherboard.
- ⓘ The black attachment is part of the connector, not the blue ribbon cable, so it will not disconnect from the motherboard.

Step 14 — Back panel



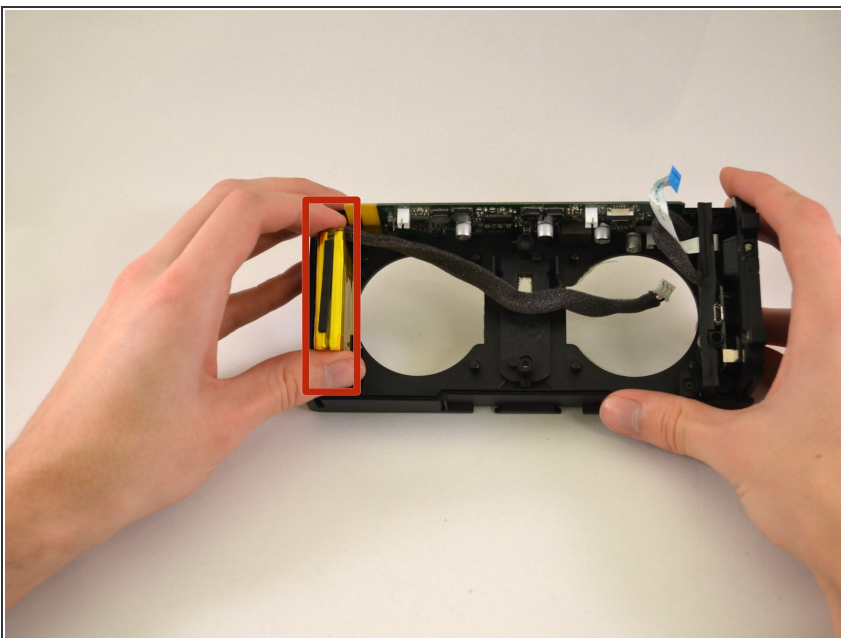
- Using a Phillips #00 Precision Screwdriver, unscrew two 8 mm screws.
- Lift off the back panel.

Step 15 — Battery



- Pull on the ribbon cable that connects the battery to the motherboard until the connector releases.

Step 16 — Removing Battery



- Pull battery straight out until it is completely out of device.
- ⓘ If you are unable to loosen glue contact, use a heat gun to assist in removal.

To reassemble your device, follow these instructions in reverse order.