



Acer Aspire R7 Wi-Fi Card Replacement

How to replace the Wi-Fi card if your Acer Aspire R7 laptop.

Written By: Andrew Rodiek



INTRODUCTION

In this guide, you will learn how to replace the Wi-Fi card on the Acer Inspire R7 laptop (**R7-371T-78GX**).

A Wi-Fi card is used to receive wireless signals from your wireless network. Over time the Wi-Fi card can fail or be upgraded for a stronger card. Review the iFixit page on the Acer Aspire R7 for more details on [Wi-Fi card issues](#).

When starting this project, make sure to power off your laptop and unplug from the power adapter. Overlooking this detail can cause damage to hardware.

TOOLS:

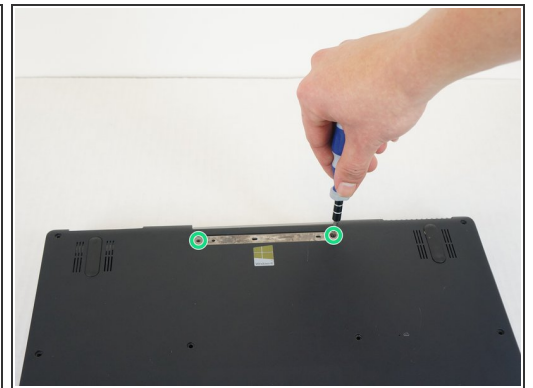
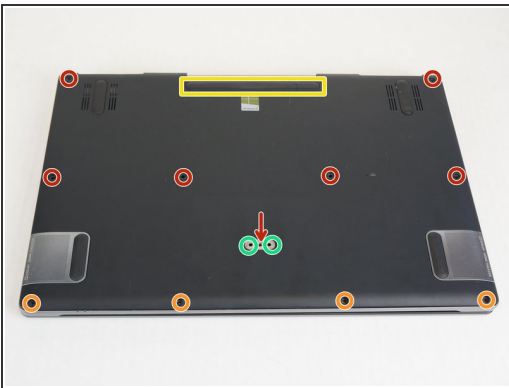
- [iFixit Opening Tool](#) (1)
 - [TR7 Torx Security Screwdriver](#) (1)
 - [Spudger](#) (1)
 - [Phillips #00 Screwdriver](#) (1)
-

Step 1 — Cover



- Shut down the laptop and disconnect the power cord.
⚠ Failing to disconnect or shut down the laptop could result in damage to the laptop or a shock hazard.
- Turn the laptop over.

Step 2



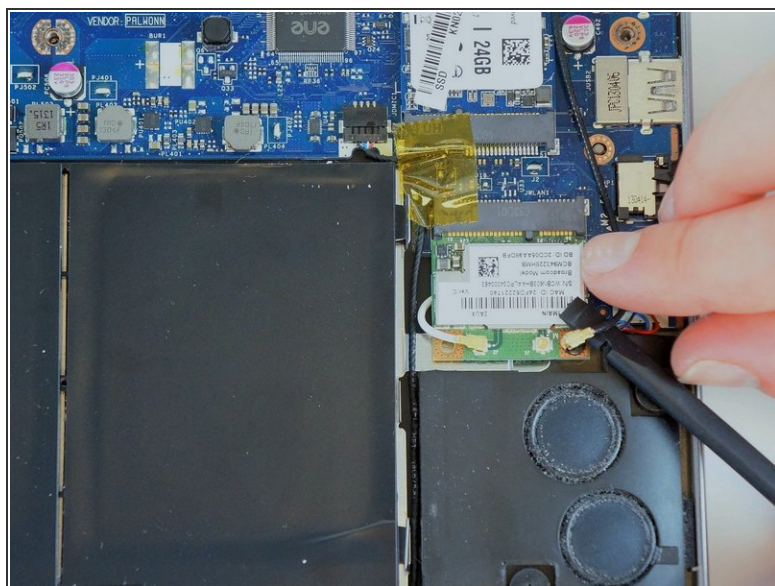
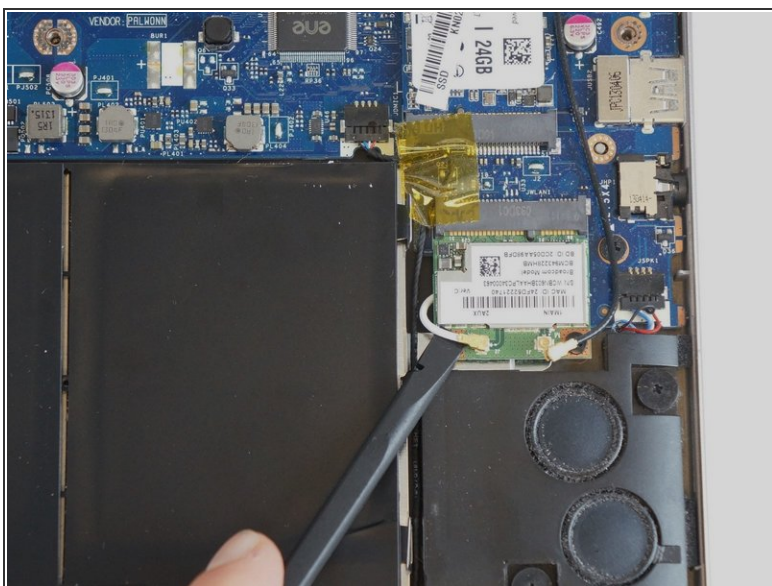
- Remove seven 10 mm T7 screws.
- Remove four 6 mm T7 screws.
- Use the blue plastic opening tool to carefully remove both rubber pads which cover the four remaining screws.
- Remove the remaining four 10 mm T7 screws.

Step 3



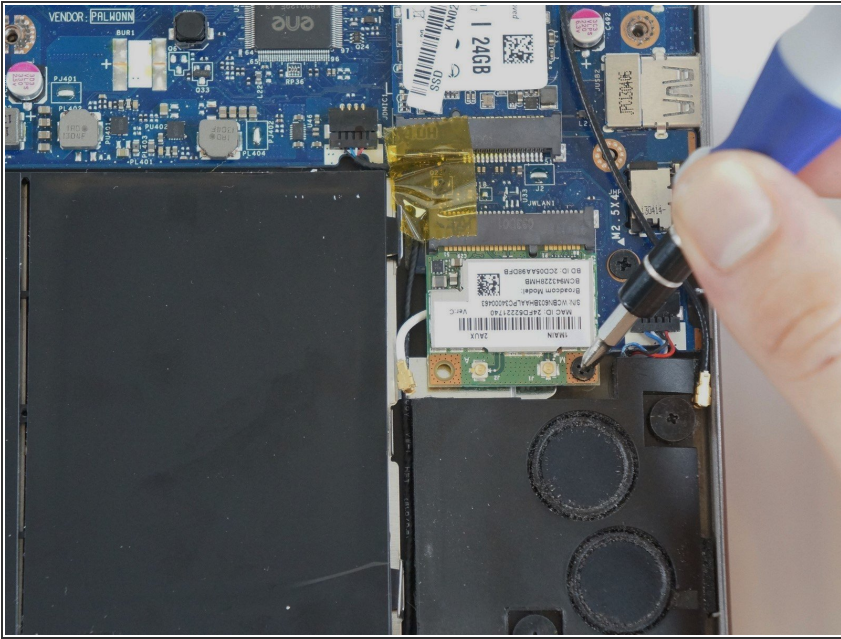
- Carefully lift the cover upwards.
- ⓘ If the cover seems stuck, use a spudger tool to pry the sides.

Step 4 — Wi-Fi Card



- Locate the WiFi Card antenna wires
- Remove both antenna wires from the WiFi card by prying upwards with the spudger tool

Step 5



- Remove the (1) 3.5mm #00 Phillips retaining screw
- *i* Once the screw is removed, the spring loaded hinge will tilt the WiFi card up

Step 6



- With the retaining screw removed, pull the WiFi card out of the socket

To reassemble your device, follow these instructions in reverse order.