



# iRobot Roomba 650 Caster Wheel Replacement

How to replace the caster wheel on your Roomba if it becomes stuck or breaks.

Written By: Alex Schnorr



## INTRODUCTION

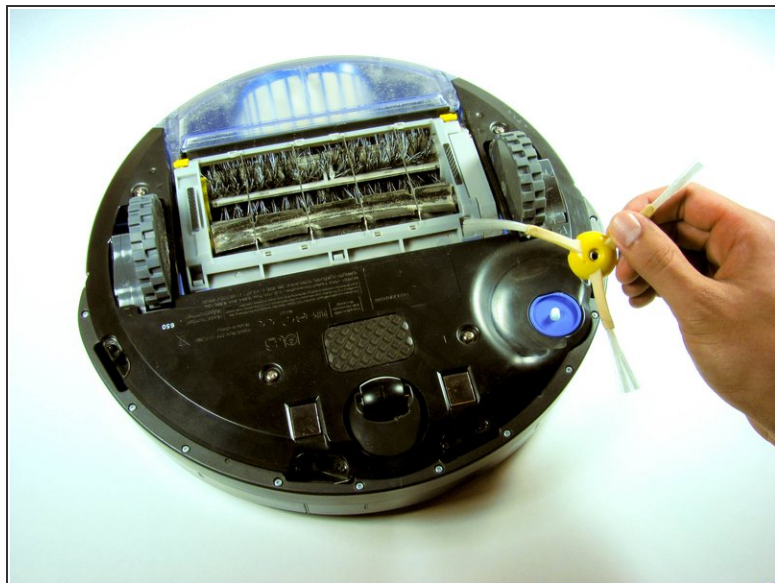
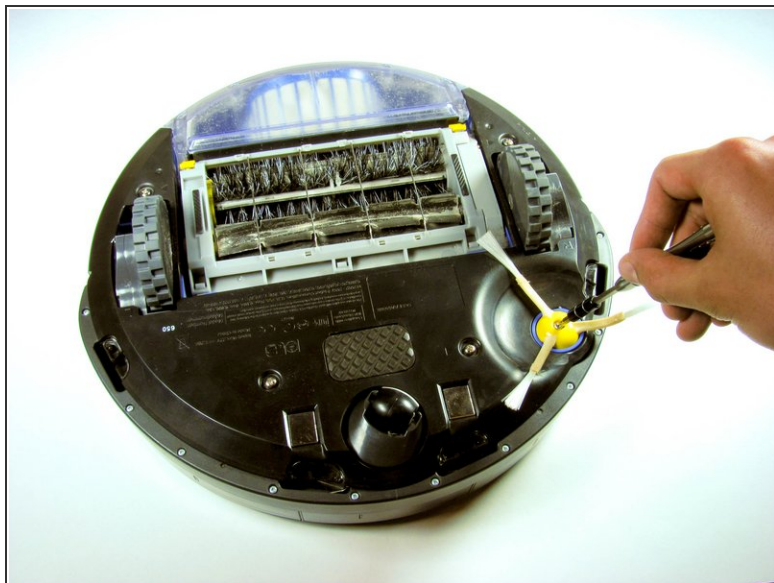
The caster wheel aids the Roomba's maneuverability, this includes moving and turning the robot around corners. Caster wheel needs to be cleaned if dirt gets stuck on it. However, if the caster wheel is broken, replacement is recommended.



### TOOLS:

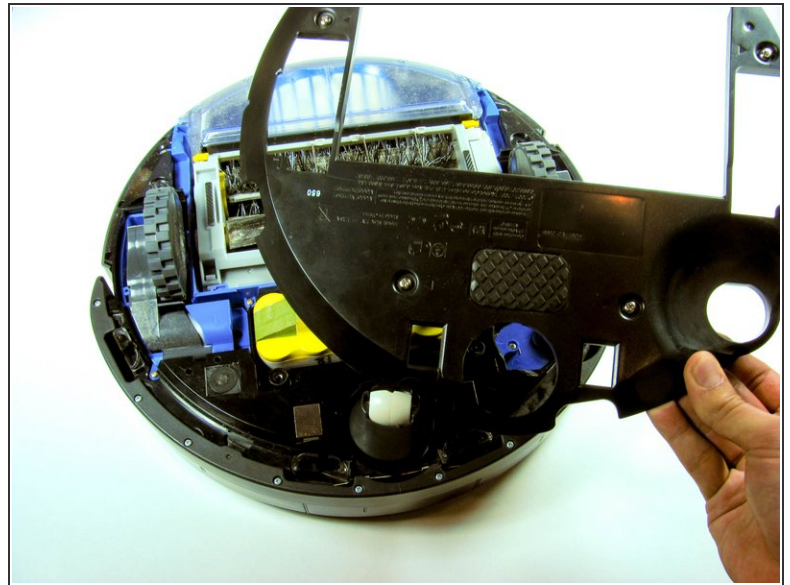
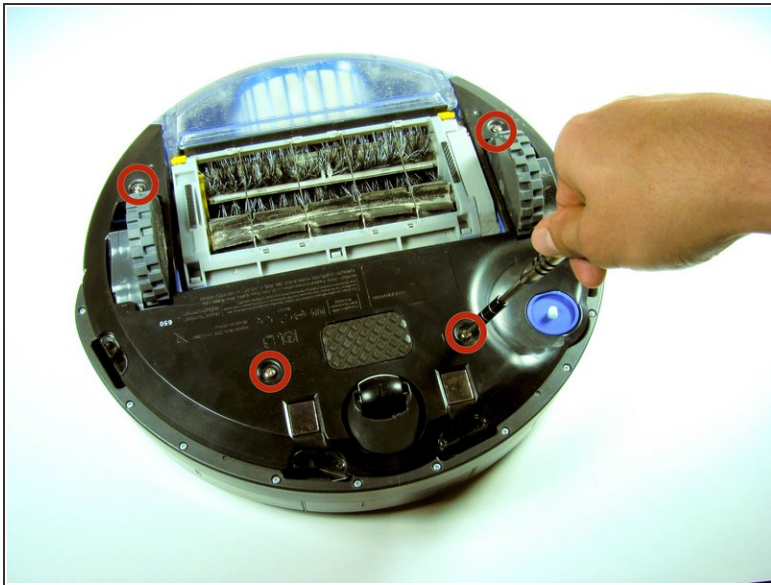
- [Phillips #2 Screwdriver](#) (1)
-

## Step 1 — Removing the Side Brush



- With the Roomba upside down and turned off, use the Phillip's 02 screwdriver to remove the one 3.5 mm screw from the center of the side-brush.
- Set the screw aside and pull the brush out.

## Step 2 — Bottom Panel Removal



- Unscrew the four screws that hold the bottom panel using the Phillips 02 screwdriver.
- ⓘ The screws will not come out of the bottom panel. They were designed to become loose but not be removed. This prevents you from losing them, and prevents the Roomba from sucking them up if they came out during cleaning.
- Once you are sure that all the screws have been loosened as much as possible, then lift the bottom panel up off the Roomba.



### Step 3 — Caster Wheel



- Begin by pulling on the caster wheel. It should pop out of its housing fairly easily.

### Step 4



- Once caster wheel is off the Roomba, push on the wheel so that it slides out of the grooves it sits in.

To reassemble your device, follow these instructions in reverse order.