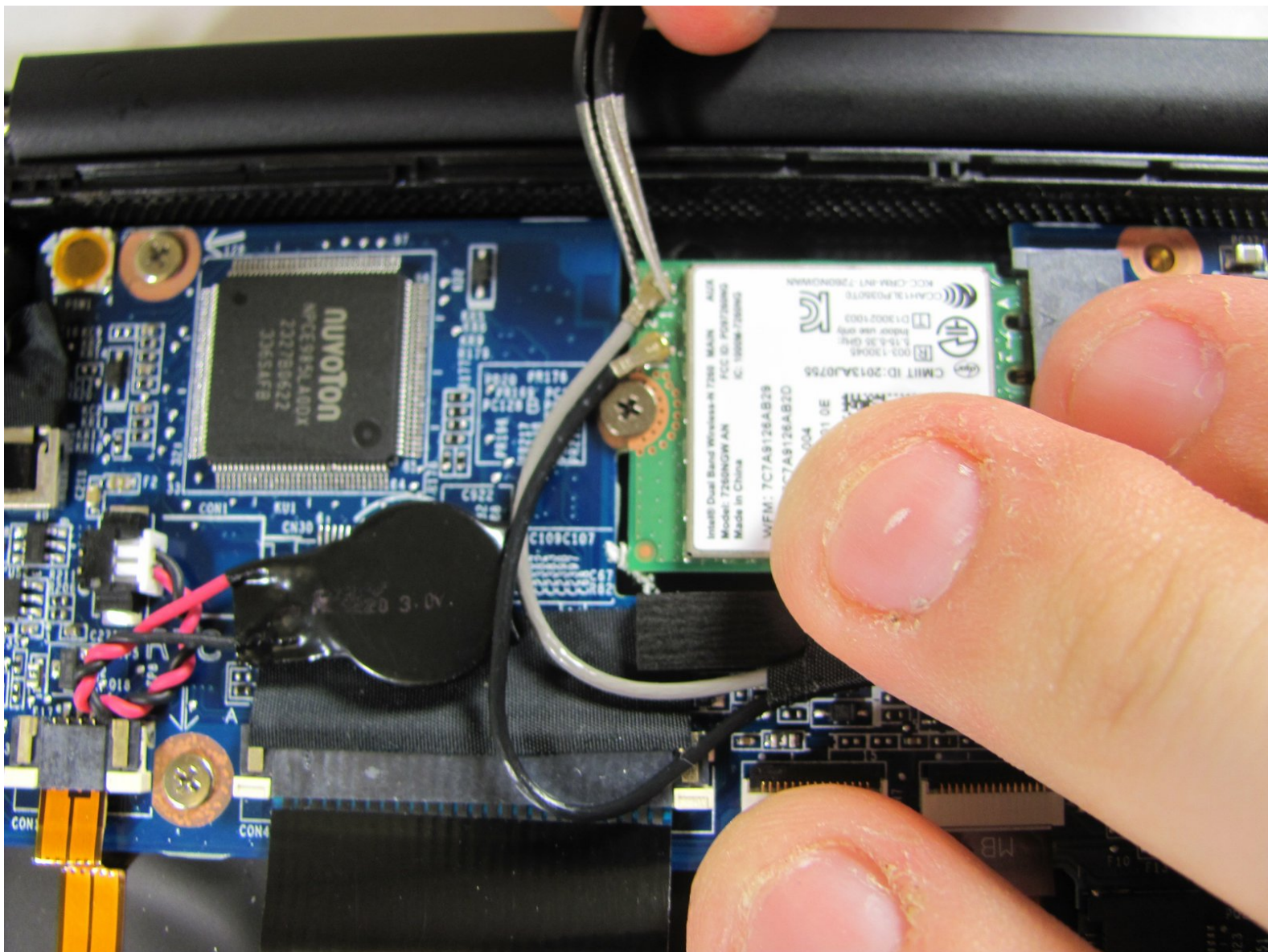




Sony Vaio Fit 13A Wireless Card Replacement

This guide will walk you through how to remove the wireless card from your Sony Vaio Fit 13A laptop.

Written By: Alex Prange





TOOLS:

- [Metal Spudger](#) (1)
- [iFixit Opening Tools](#) (1)
- [Phillips #0 Screwdriver](#) (1)

Step 1 — Back Cover



- Starting with the laptop top-down, locate and remove the twelve 1mm Phillips #0 screws securing the back cover to the main body of the computer.

Step 2



- Use the Plastic Opening Tools or Metal Spudger to carefully loosen back cover from the body of the computer.

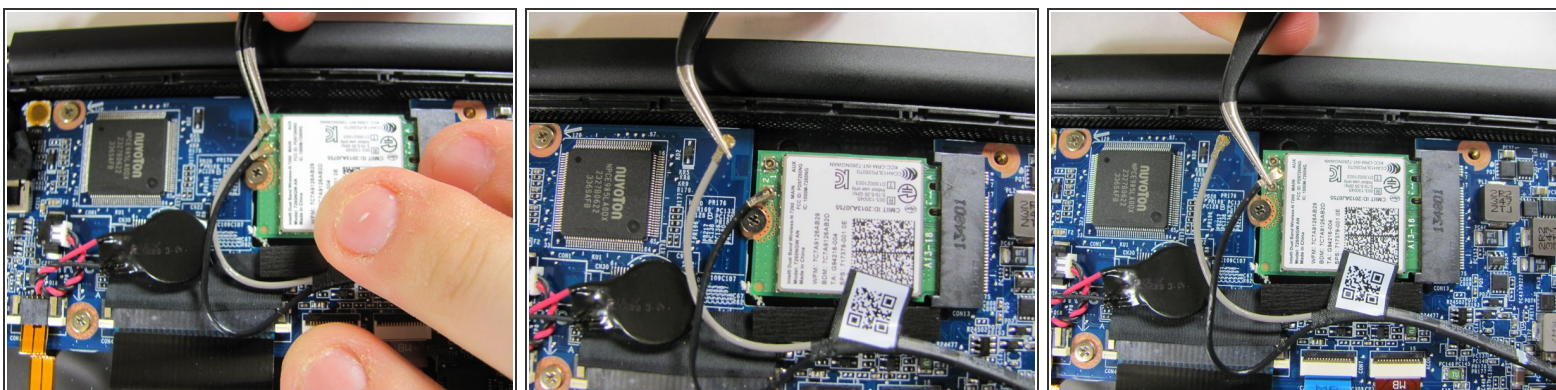
⚠ Be sure to avoid headphone jack when removing back cover by lifting cover away from computer and up.

Step 3



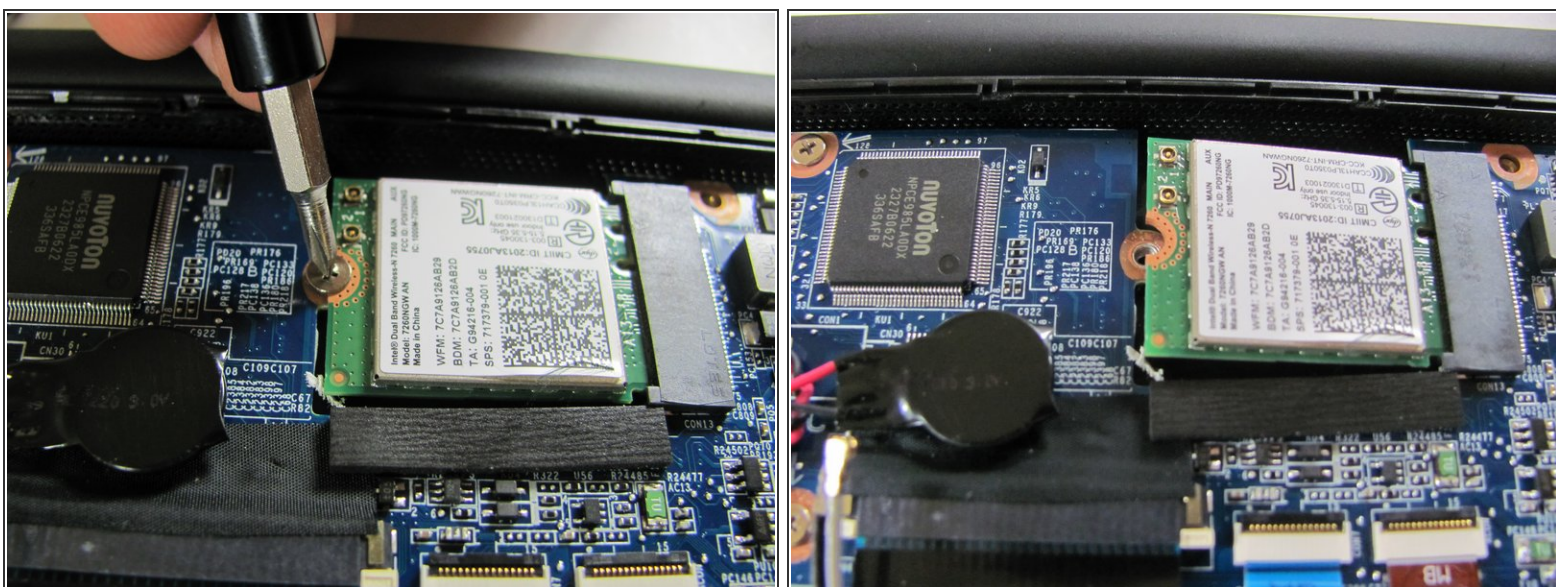
- Lift off back cover to access inner components of computer.

Step 4 — Wireless Card



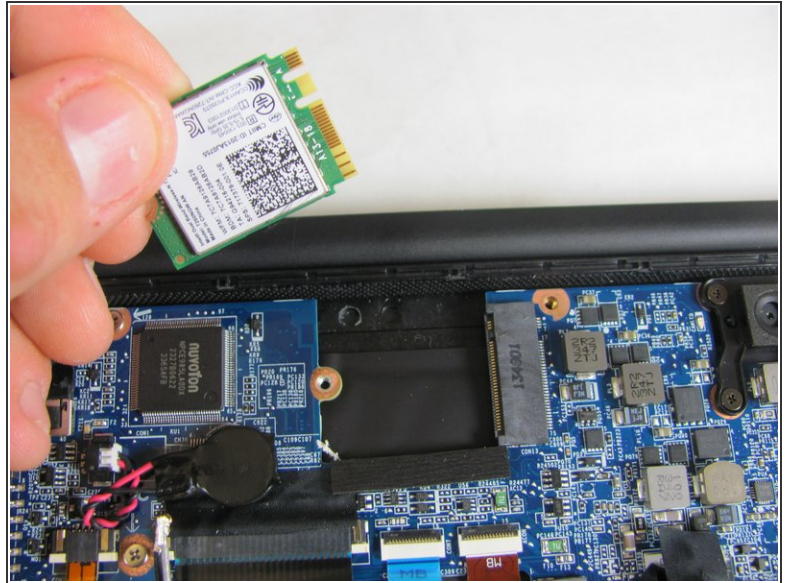
- Use a pair of tweezers to gently disconnect the two antenna cables.

Step 5



- Locate and remove the single 1mm Phillips #0 screw that is securing the wireless card to the motherboard.

Step 6



- Gently grasp wireless card with two fingers and pull away from motherboard to the left.

⚠ Do not pull the wireless card up when removing it. This could snap the connections.

To reassemble your device, follow these instructions in reverse order.