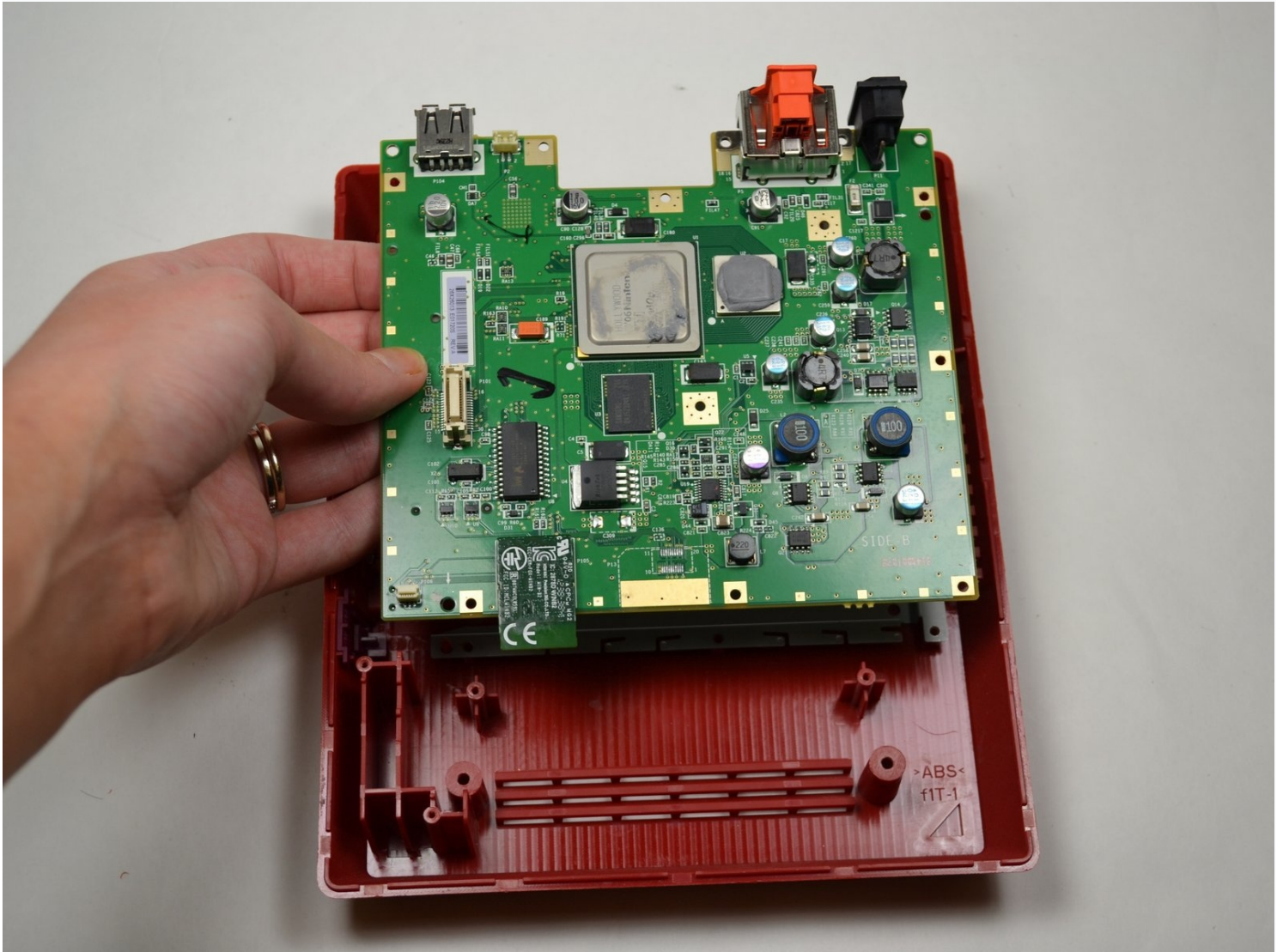




Nintendo Wii mini Motherboard Replacement

This guide details the replacement of the...

Written By: Kristin Anderson



INTRODUCTION

This guide details the replacement of the motherboard on a Nintendo Wii Mini. The steps shown in the images are of the disassembly process, and the replacement and reassembly are as simple as completing the steps in reverse.

An electrostatic discharge bracelet is recommended when handling delicate electronics.

A motherboard replacement may be necessary when these symptoms occur in your Wii Mini : Wii does not turn on or will not boot up after power supply is found to be working.

TOOLS:

Phillips #0 Screwdriver (1)
iFixit Opening Tool (1)
Tweezers (1)

PARTS:

Nintendo Wii mini Upper Case (1)
Nintendo Wii mini Fan (1)
Nintendo Wii mini Power Button Board (1)
Nintendo Wii mini Motherboard & Paired Optical Drive (1)
Nintendo Wii mini Motherboard (1)

Step 1 — Unscrew the Bottom



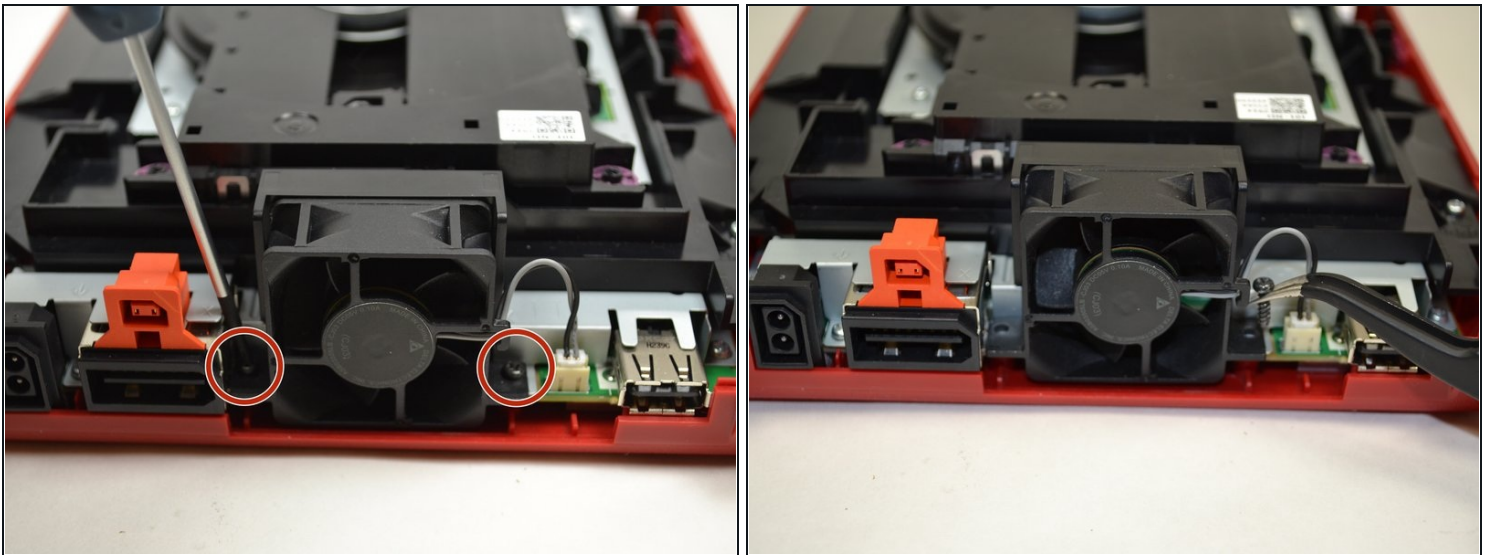
- Remove the two rubber feet at the back of the console to reveal the hidden screws.
- Remove the four 6mm Phillips #0 screws.

Step 2 — Remove the Cover



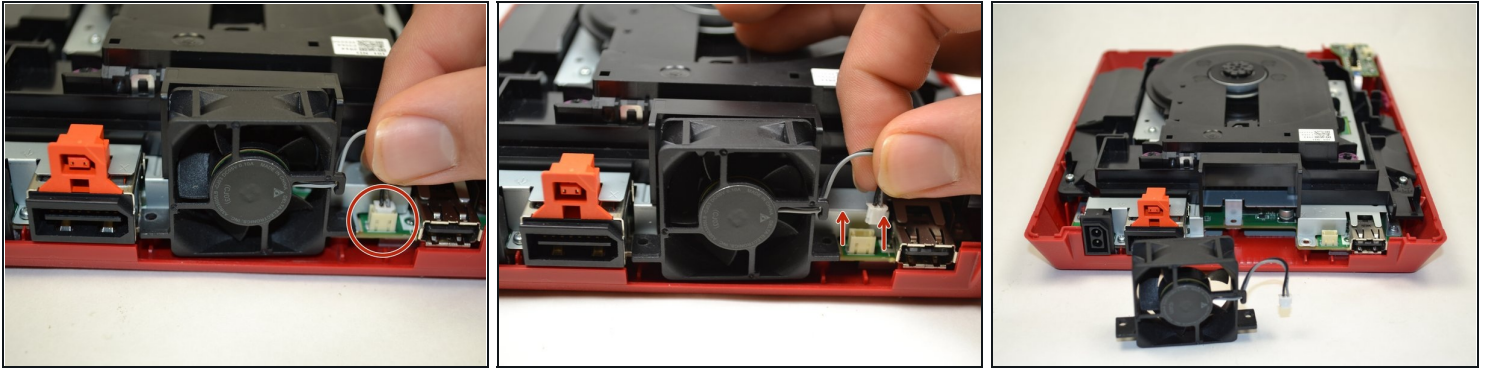
- Turn the Wii mini right-side up. Then run a plastic opening tool around the middle edge of the console to loosen the top piece.
- Gently lift the top piece of the console and set it aside.

Step 3 — Unscrew the Fan



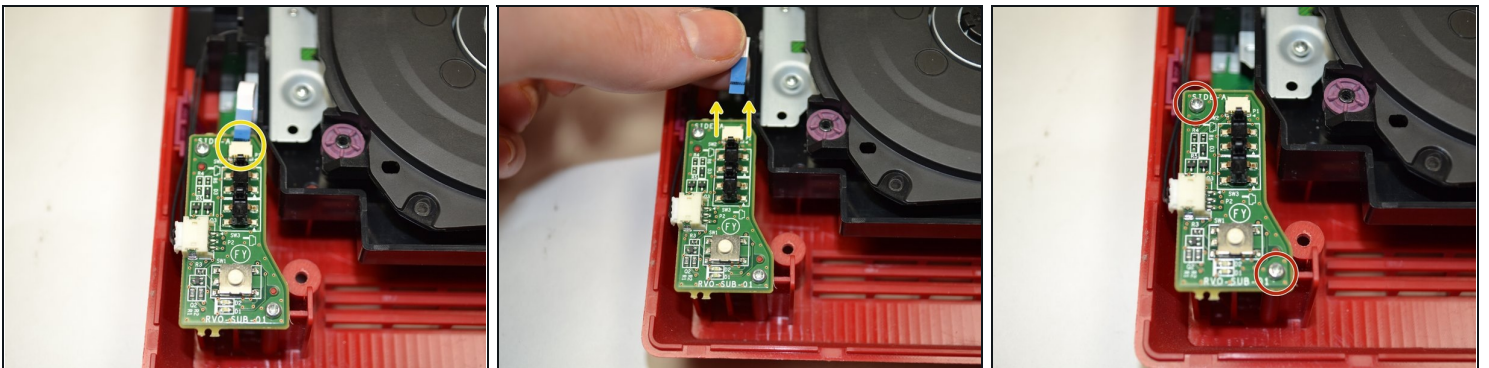
- Turn the Wii mini around so that the back of the device is facing you.
 - Using a Phillips #0 Screwdriver, unscrew the two 6mm screws on either side of the fan piece.
- ① You may need to use [tweezers](#) to pull out the screws once they are loosened.

Step 4 — Detach the Fan Connector



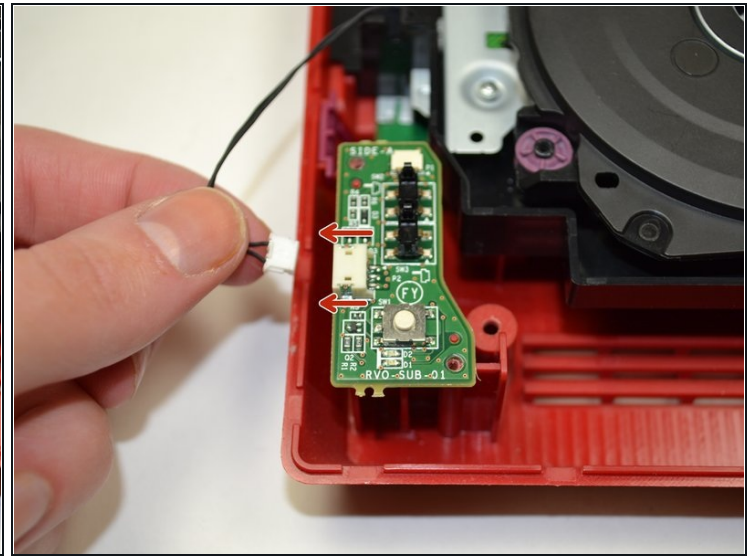
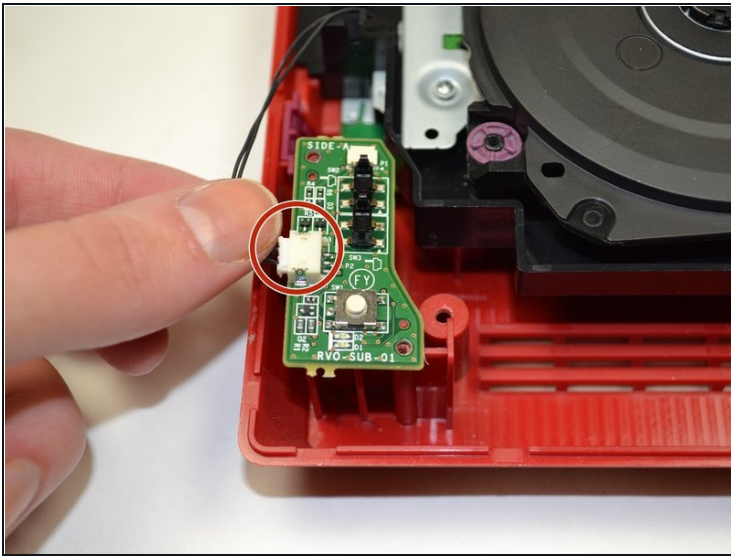
- Using your fingers, gently pull the top of the pin connector straight up to detach the fan from the console.
- ⚠ Do not wiggle the connector or cable while removing. This may cause the connector to come loose
- Remove the fan piece and set it aside.

Step 5 — Power Board



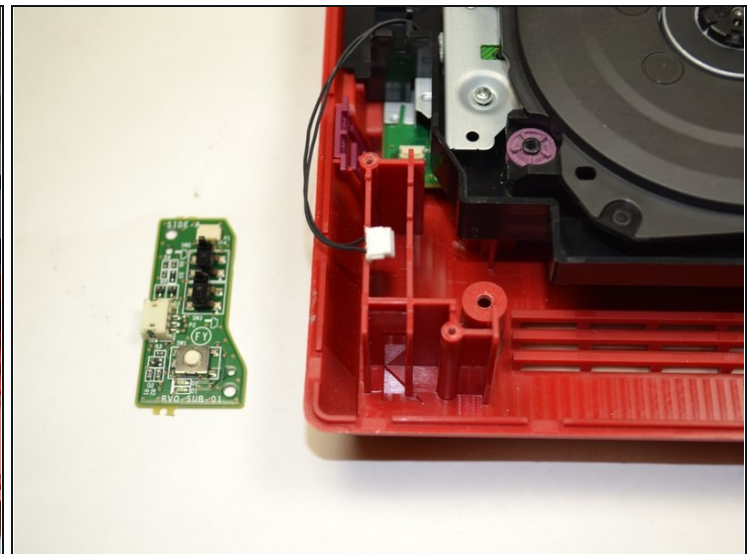
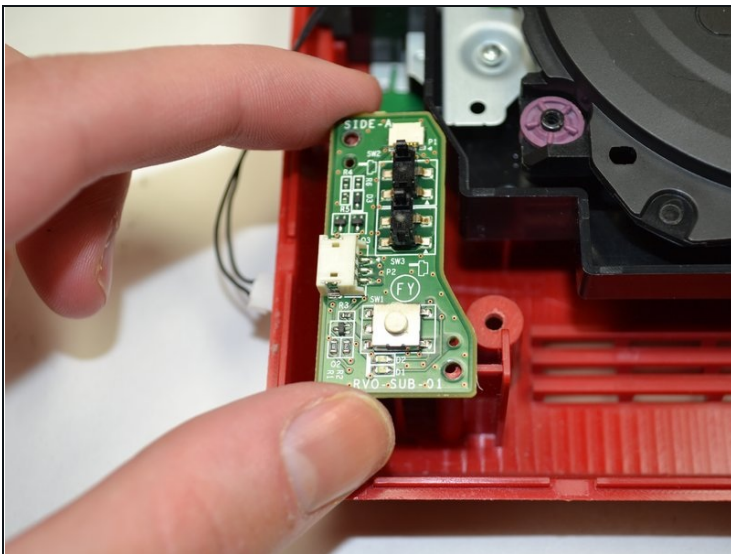
- Using your fingers, slide out the blue ribbon cable from the the top of the power board.
- Using a Phillips #0 Screwdriver, unscrew the two 4mm screws at the top and bottom of the power board.

Step 6



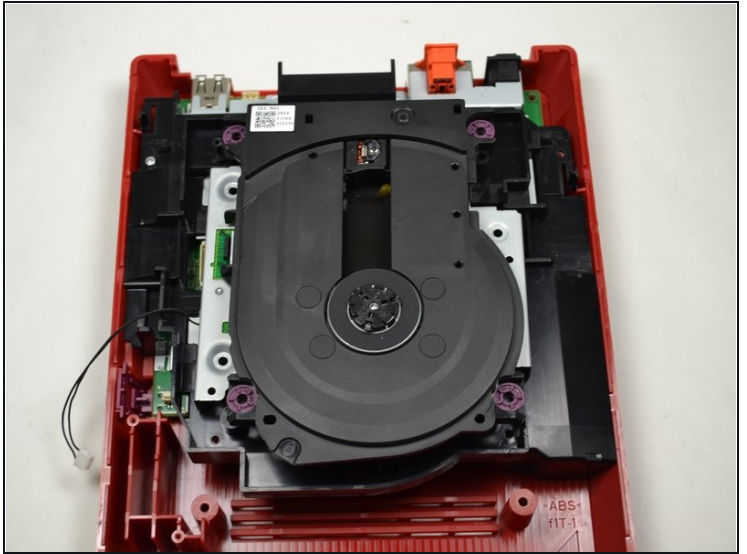
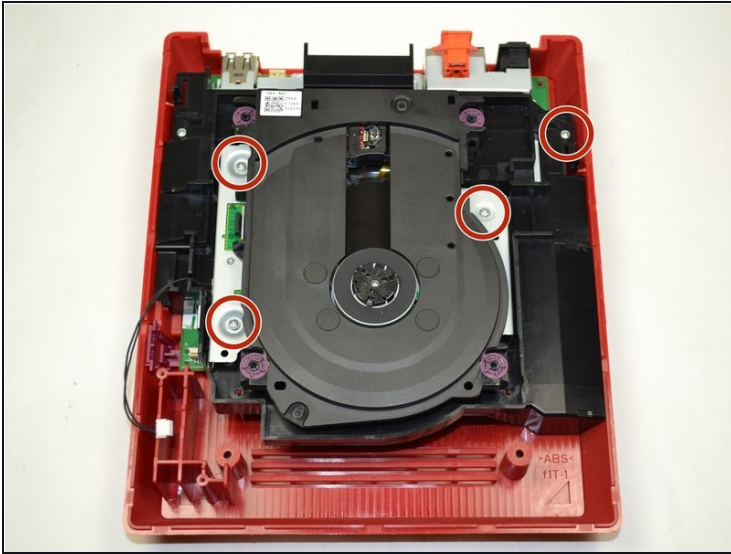
- Using your fingers, gently pull the pin connector to disconnect the power board from the disc drive.

Step 7



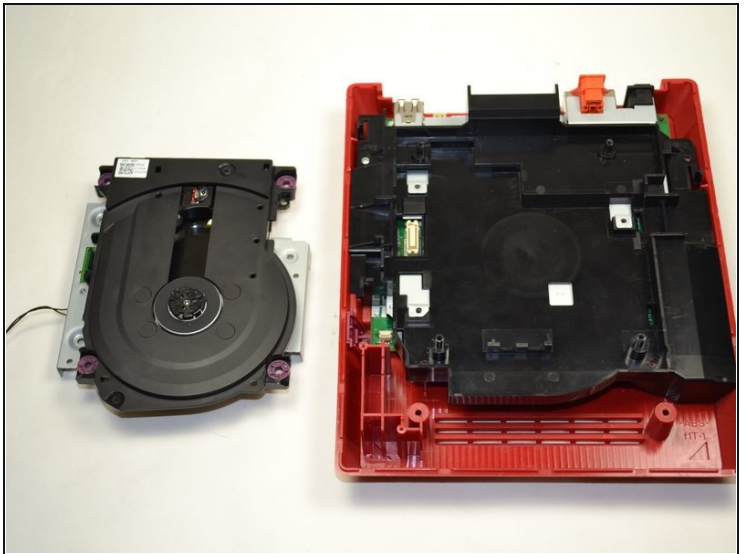
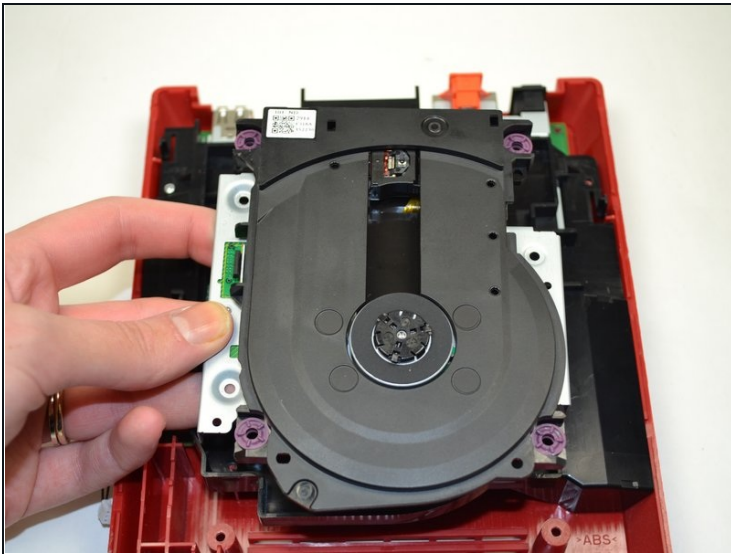
- Lift the power board from the console and set it aside.

Step 8 — Disc Drive



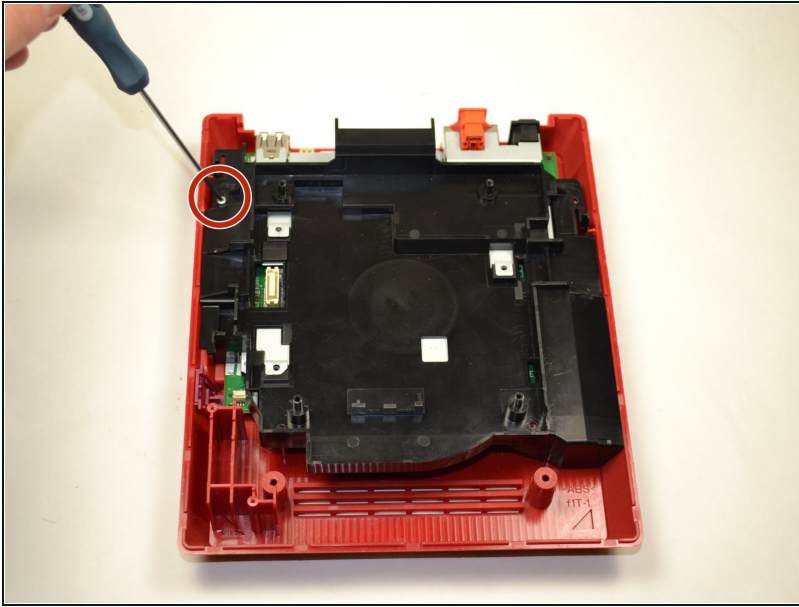
- Using a Phillips #0 Screwdriver, unscrew the four 6mm screws.

Step 9



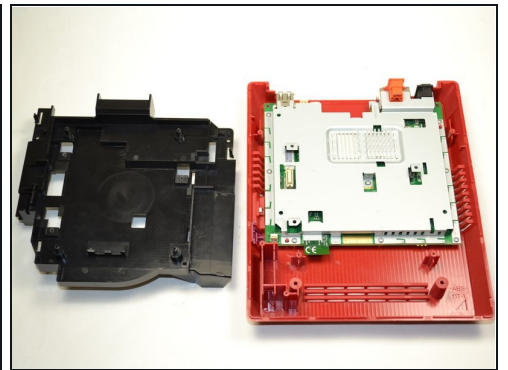
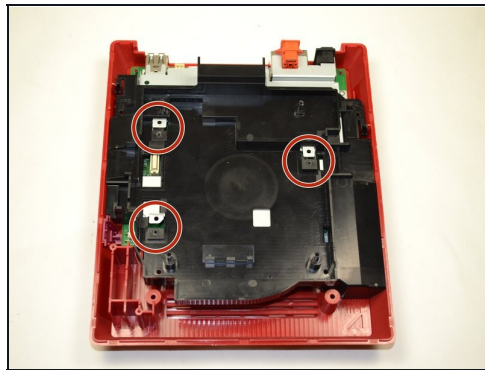
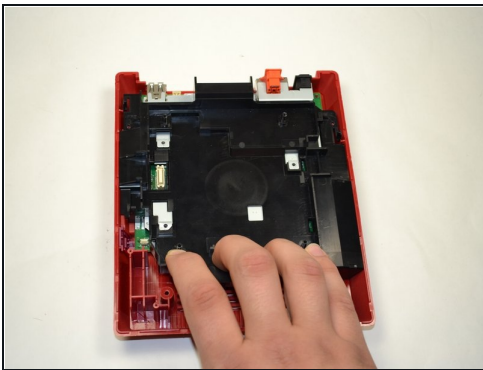
- Lift the disc drive out of the console and set it aside.

Step 10 — Unscrew the Tray



- Using a Phillips #0 Screwdriver, unscrew the 6 mm screw at the top of the black tray.

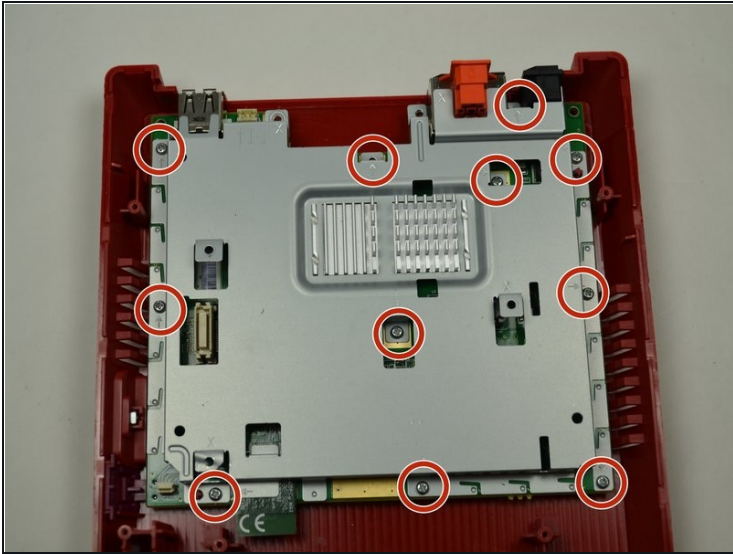
Step 11 — Remove the Tray



- Using your fingers, pull the black plastic tray toward you to loosen it from the console.
- Make sure the black square pieces are separated from the metal square pieces before trying to lift out the tray.
- Once separated, lift the plastic tray out of the console and set it aside.

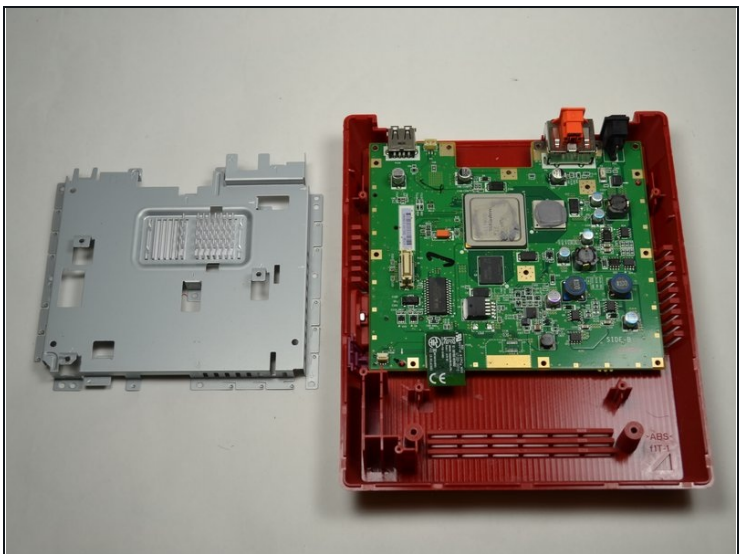
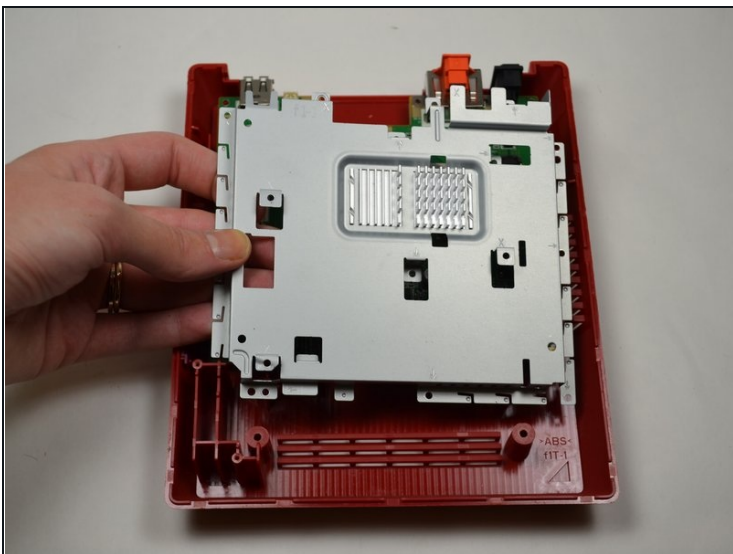
⚠ Trying to remove the tray before it is completely loosened may result in damage to the metal square pieces.

Step 12 — Unscrew the Metal Casing



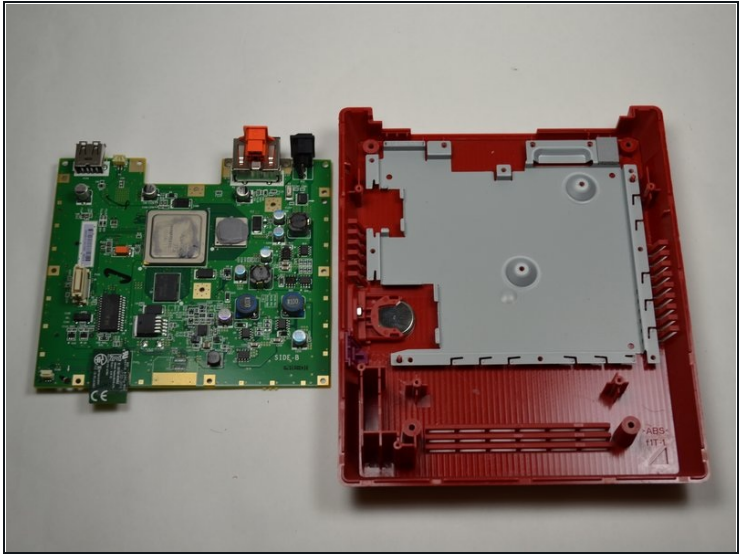
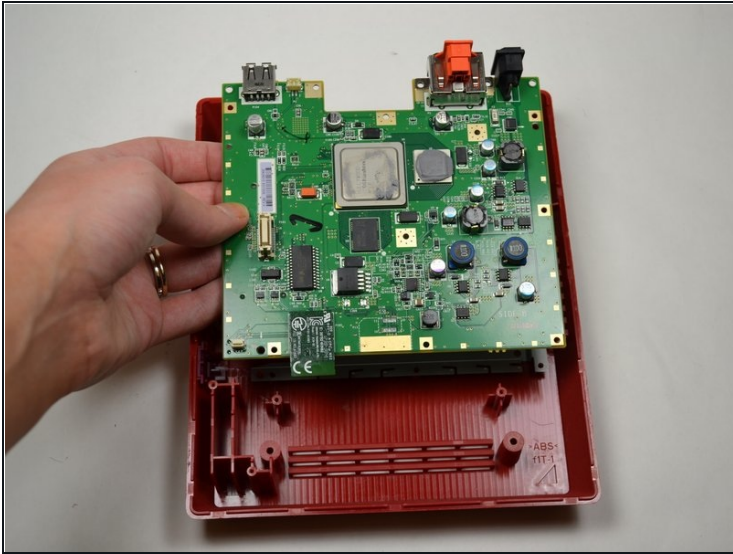
- Using a Phillips #0 screwdriver, remove the eleven 5 mm screws holding the silver metal plate to the console.
- ⓘ These screws are indicated by small arrows on the metal plate. (See Photo #2)

Step 13 — Remove Metal Casing



- Lift out the metal plate and set it aside.

Step 14 — Remove Motherboard



- Lift out the motherboard and set it aside.

To reassemble your device, follow these instructions in reverse order.