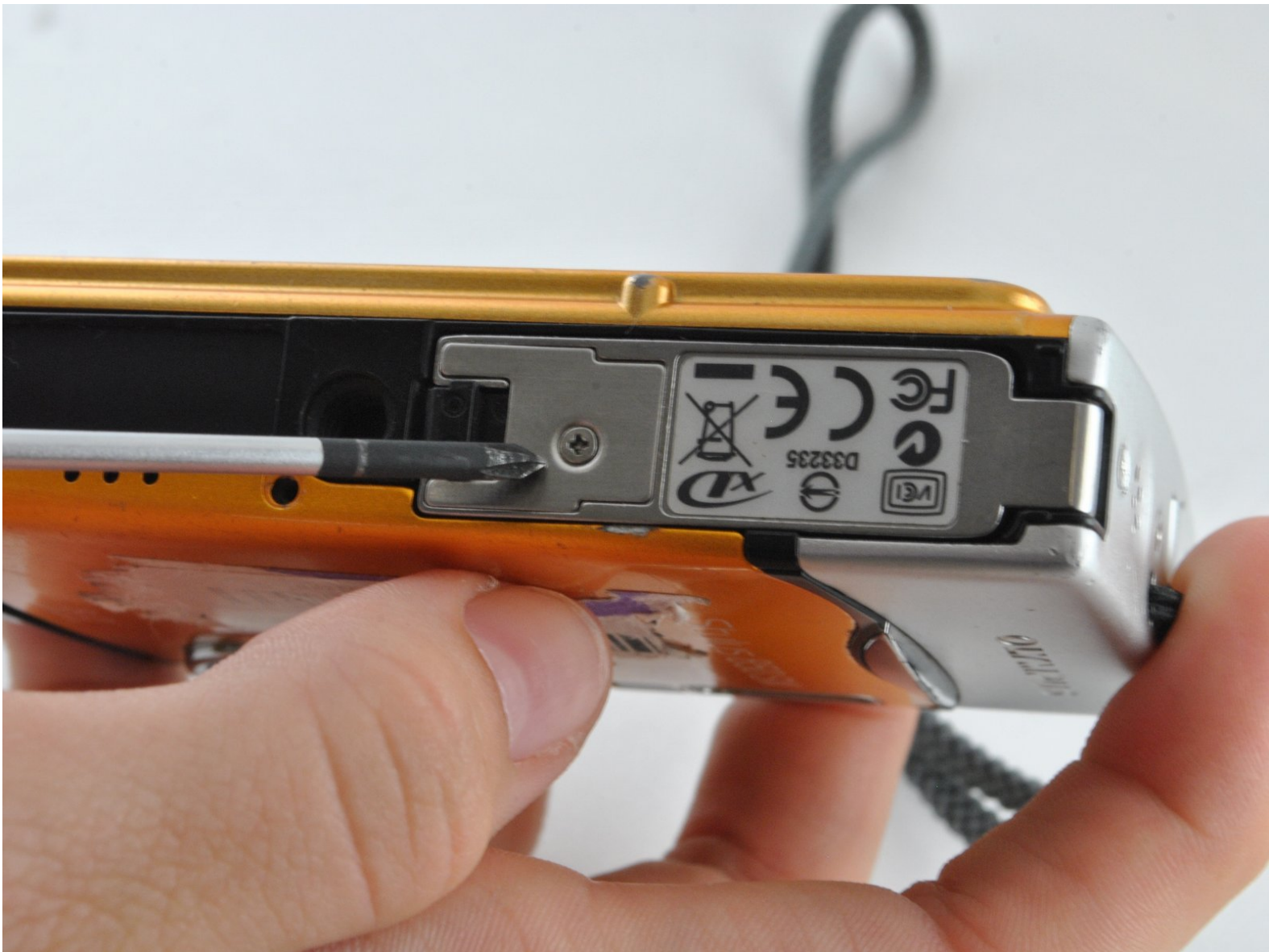




# Olympus 850SW Battery Replacement

This guide will provide a step by step instructions on how to replace the battery latch on an Olympus Stylus 850SW.

Written By: Emma Fincken



## INTRODUCTION

Ensure you have a fully charged battery, and that it is the correct battery if you have purchased a new one. This camera will accept a rechargeable Olympus LI-42B Lithium-Ion battery.



### TOOLS:

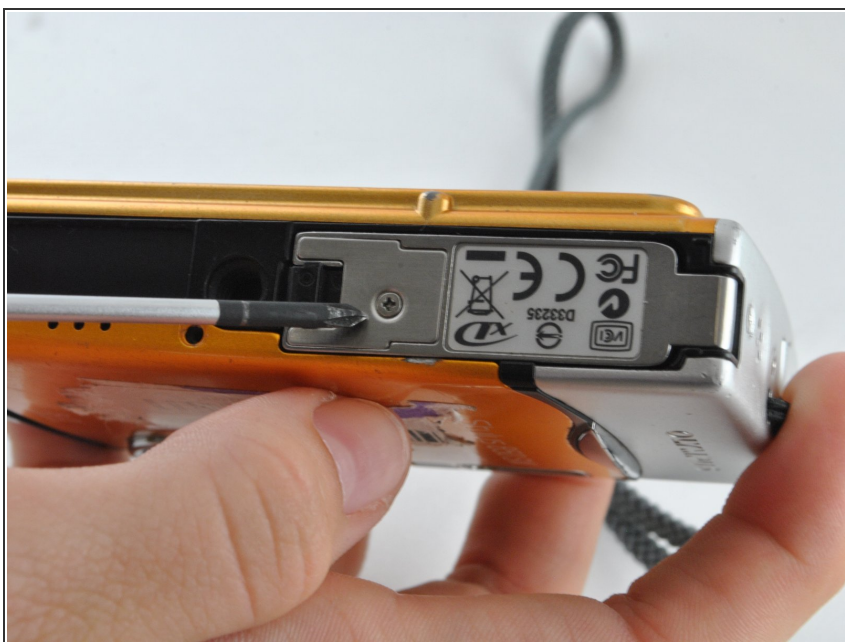
- [Phillips #00 Screwdriver](#) (1)



### PARTS:

- [Olympus LI-42B Lithium-Ion Battery](#) (1)

## Step 1 — Battery



- Locate the battery compartment on the bottom panel of the camera.

## Step 2



- Using a PH00 Phillips Screwdriver, unscrew the one screw located on the latch.

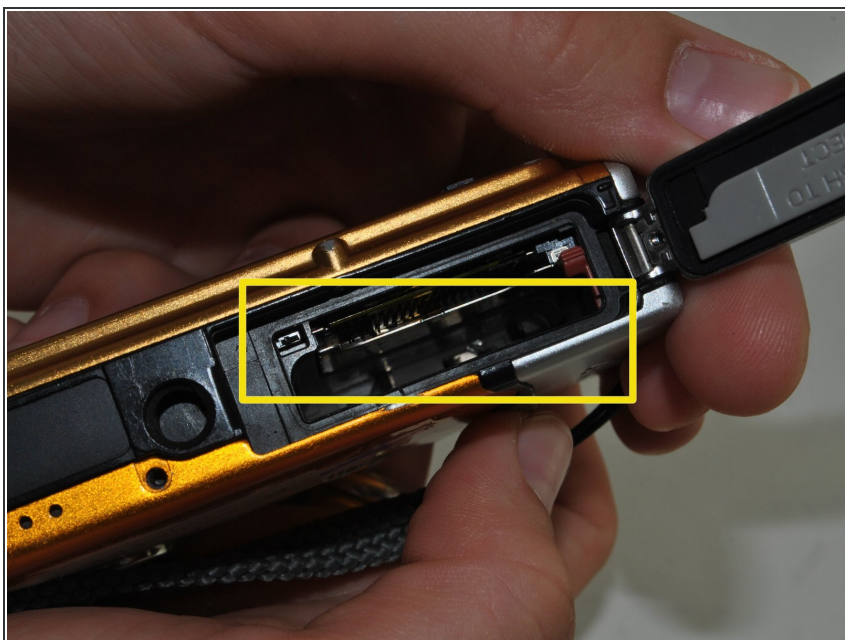


### Step 3



- Find the arrows on the compartment, remove the small black plastic piece, and release the latch.

### Step 4



- Allow the latch to completely open and insert the battery, with the writing side up.
- ⓘ The battery slot is the bigger slot. The smaller slot is for the memory card.

## Step 5



- Close the latch. You will hear a click when the compartment is fully closed.

## Step 6



- Place the small black piece back in its' place.

## Step 7



- Place the metal cover back over the closed latch, and screw the screw back in.

To reassemble your device, follow these instructions in reverse order.