



Lens Cover Replacement

This guide will provide steps on how to replace the lens cover of an Olympus Stylus 850SW from the inside.

Written By: Kathleen



INTRODUCTION

Here, we will describe how to disassemble your camera in order to properly replace the lens cover.



TOOLS:

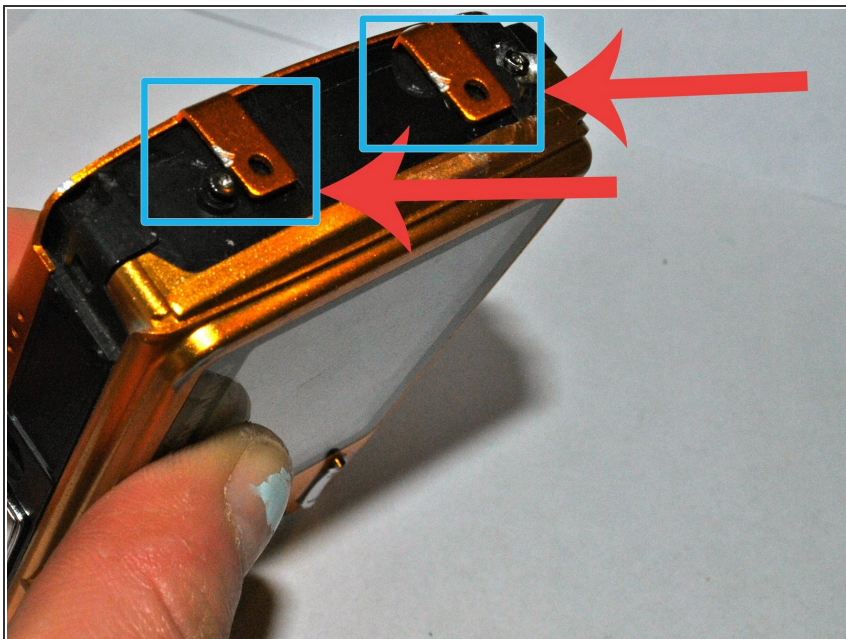
- [Phillips #00 Screwdriver](#) (1)
-

Step 1 — Lens Cover



- Unscrew the two small screws on the black side panel of the camera using a PH00 screwdriver. Remove the part.

Step 2



- You will need to remove the front panel in order to access the lens. Lift the latches on the side of the front panel to remove it entirely, pulling gently in an upward motion.

Step 3



- Locate silver lens covering.

Step 4



- Use your PH00 screwdriver to unscrew the lens cover.
- Remove the screw.
- Remove the lens cover.

To reassemble your device, follow these instructions in reverse order.