



Toshiba Satellite A75-S226 Wi-Fi Card Replacement

Written By: Garrett Gudgel

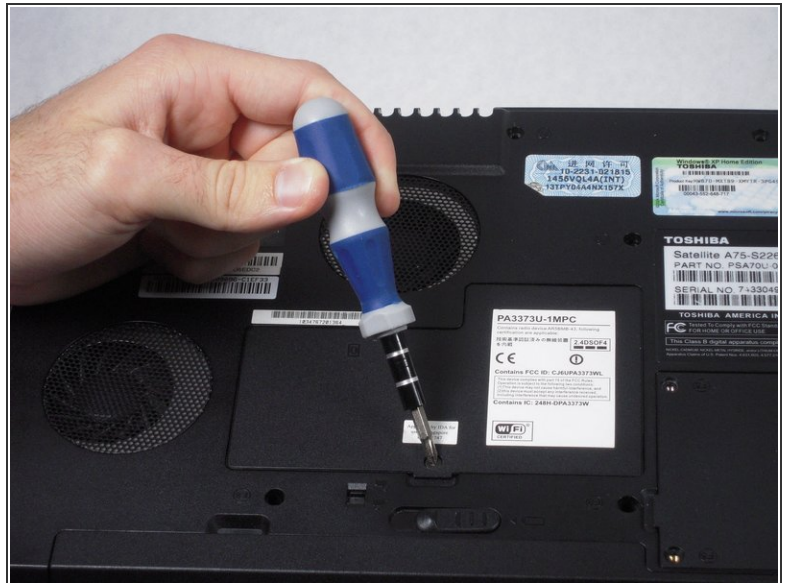




TOOLS:

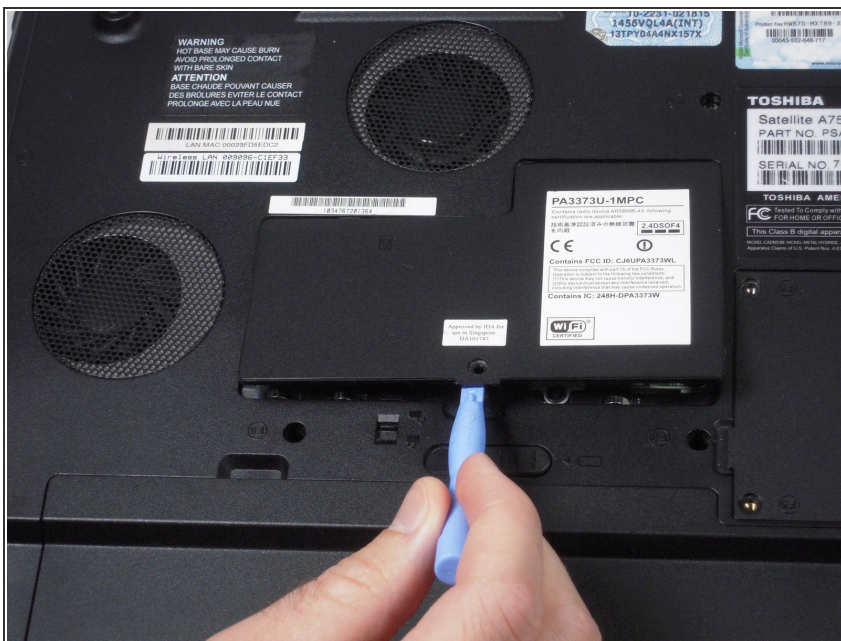
- [Phillips #1 Screwdriver](#) (1)
 - [iFixit Opening Tools](#) (1)
-

Step 1 — Wi-Fi/Memory Cover



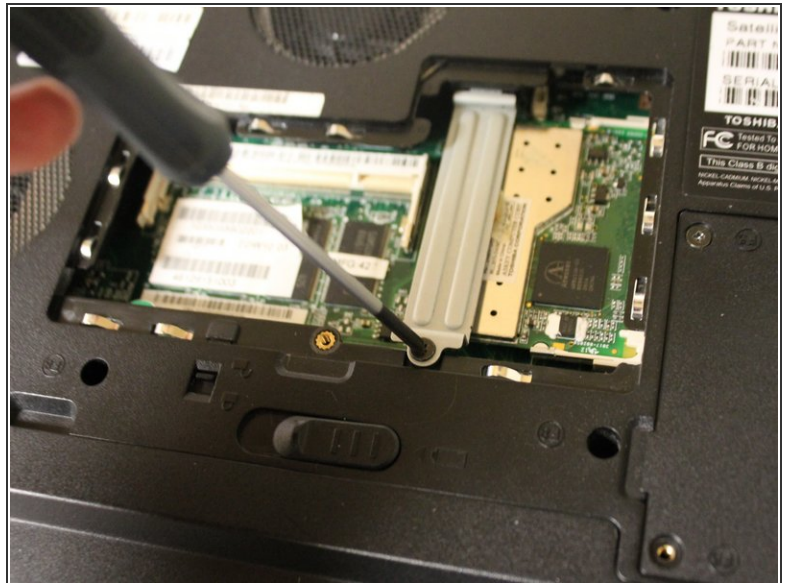
- Remove the 5.75 mm screw from the cover panel.
- ⓘ Turn the laptop over with the screen facing down.

Step 2



- Lift up the cover panel using a plastic opening tool.

Step 3 — Wi-Fi Card



- Remove the 5.64 mm screw from the bottom of the crossing bar.
- Remove the crossing bar.

Step 4



- Use a plastic opening tool to disconnect the black and white antenna cable's connectors from the Wi-Fi card.
- ⓘ Note that the black wire is connected to the port that is labeled main.

This document was generated on 2020-11-24 03:08:31 AM (MST).

Step 5



- Use fingers to push the clips away from memory card.

Step 6



- Use fingers to remove the Wi-Fi card.

To reassemble your device, follow these instructions in reverse order.