



dreamGEAR Quad Dock Pro Prerequisite Guide

Prerequisite Guide only

Written By: Jacob



INTRODUCTION

To complete this guide, you will need a PH 0 screwdriver and a spudger or similar prying device to access the interior of the Quad Dock Pro.



TOOLS:

- [Phillips #0 Screwdriver](#) (1)
 - [iFixit Opening Tools](#) (1)
-

Step 1 — Prerequisite Guide to Accessing Interior



- Remove the rubber foot pads on the bottom of the device using a plastic opening tool.

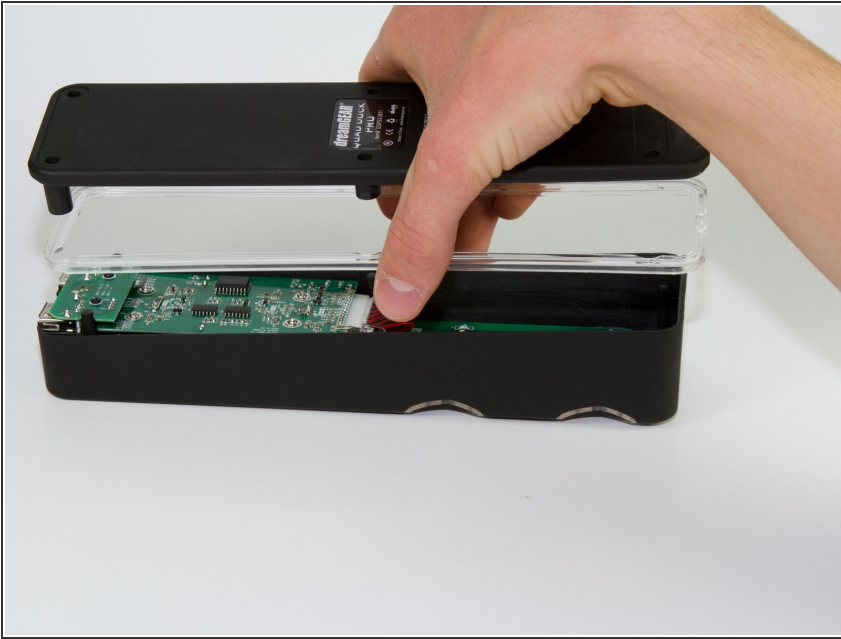
Step 2



- Remove the six 2 mm PH0 screws on the bottom of the device.

i Four of those screws are located under the foot pads.

Step 3



- Gently remove the bottom of the device.

To reassemble your device, follow these instructions in reverse order.