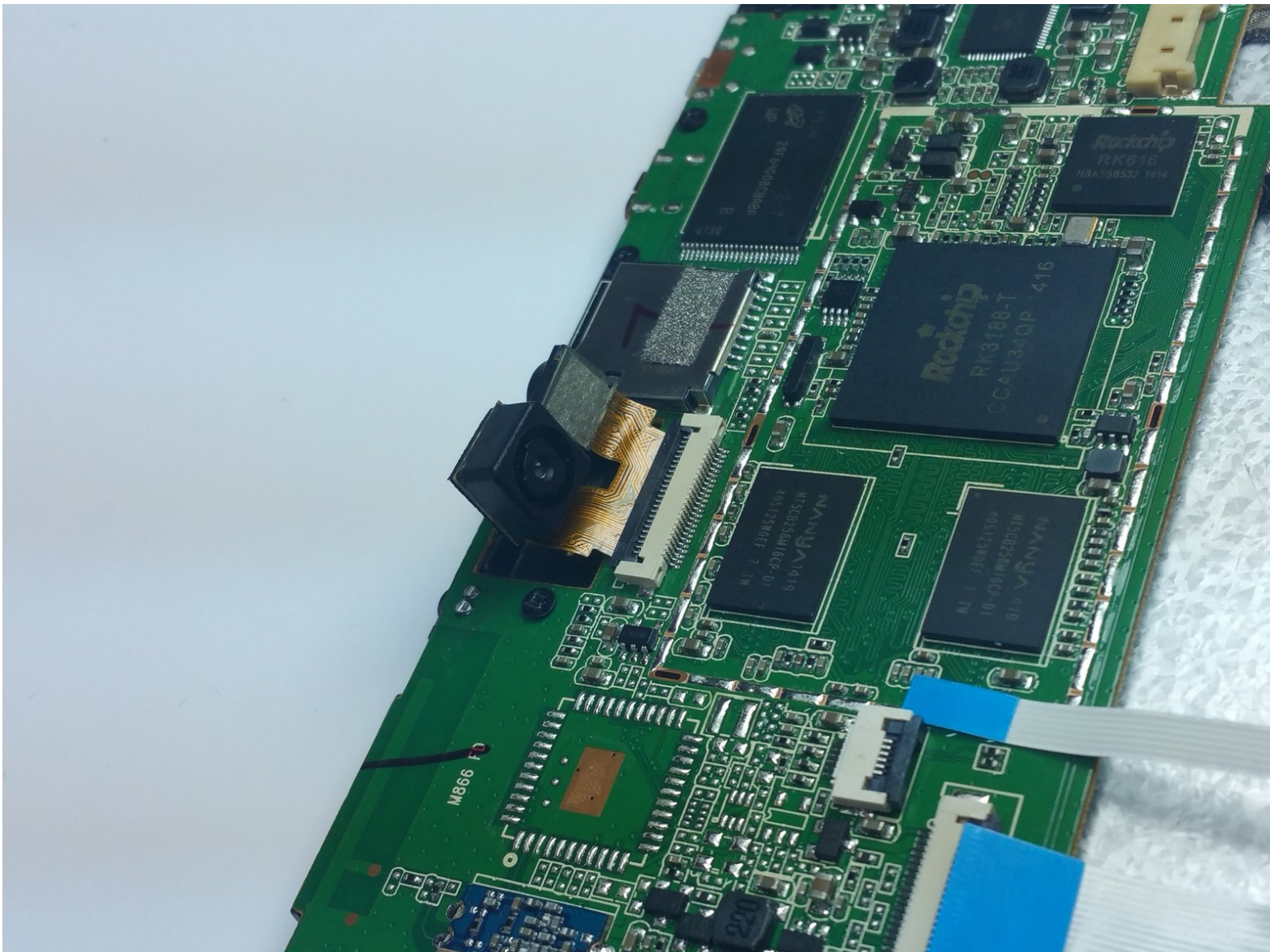




# Nextbook 8 Camera Replacement

Step by step guide to replace both cameras.

Written By: Dylan Wiese

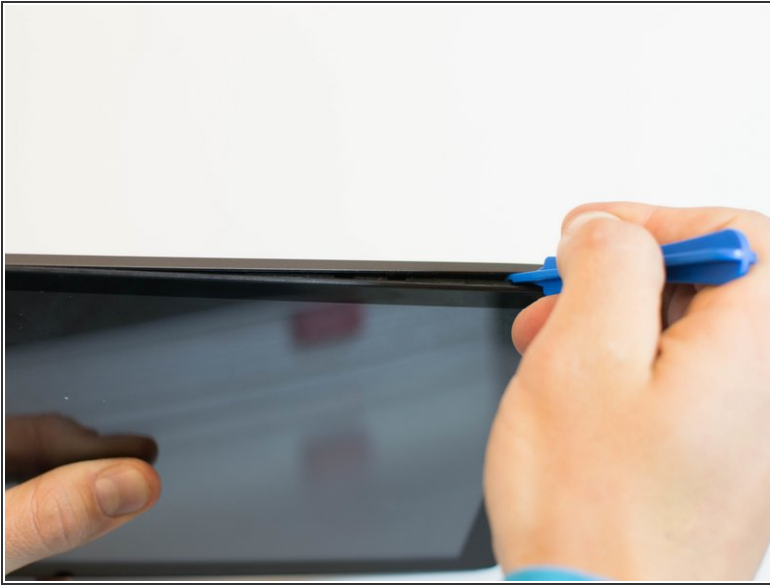




## TOOLS:

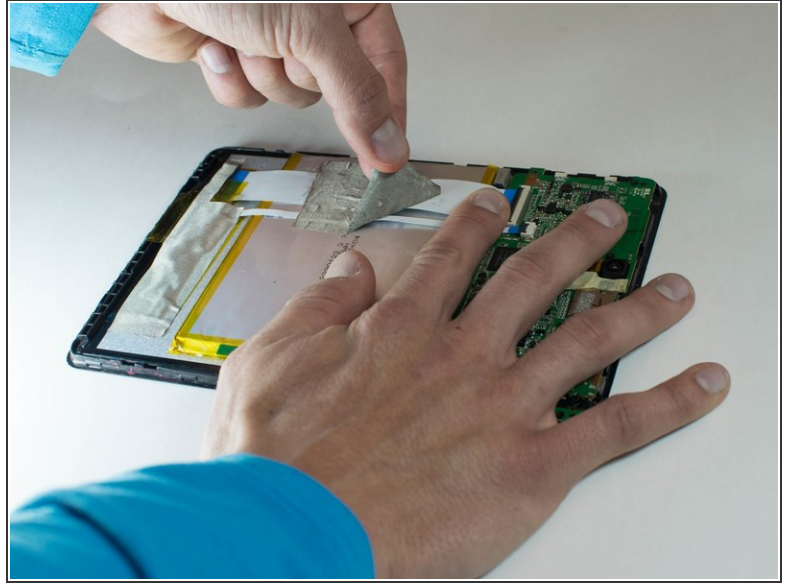
- [iFixit Opening Picks set of 6](#) (1)
- [iFixit Opening Tools](#) (1)
- [Spudger](#) (1)

## Step 1 — Battery



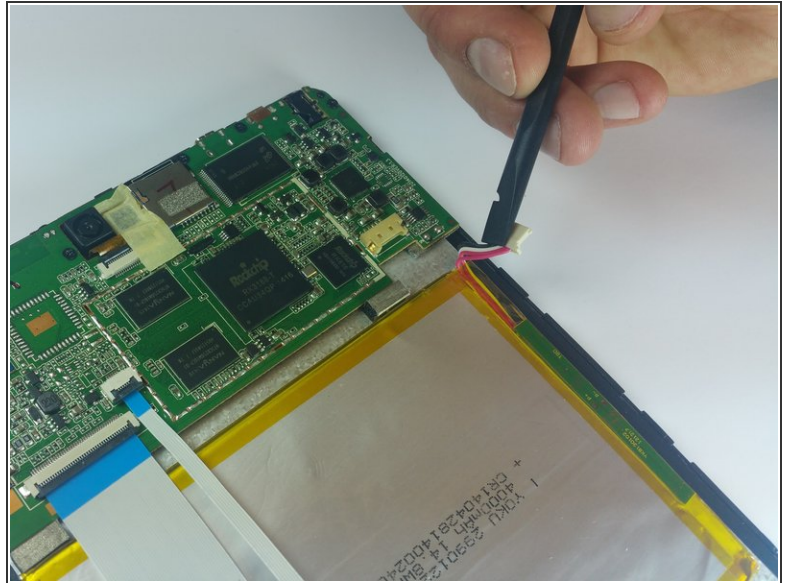
- Use the plastic opening tool to remove the back cover. Carefully slide the tool between the front glass and back cover.
- Slide the tool along the edge to work the back cover off.
- ⓘ It helps to have an extra tool to stick in the gap and keep the back cover separated from the glass as you slide the other tool.

## Step 2



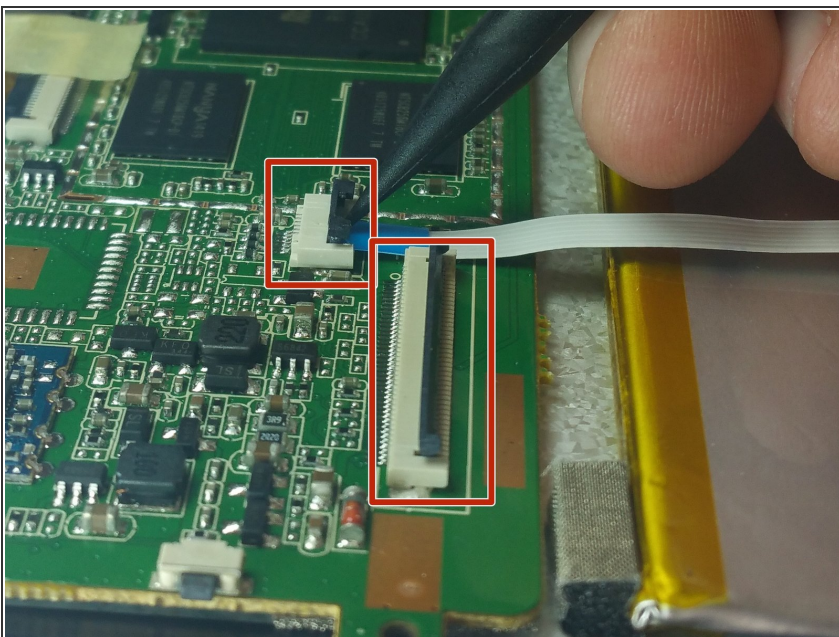
- Remove the tape covering the motherboard.
- Remove the silver tape holding the white ribbon cables to the battery.

## Step 3



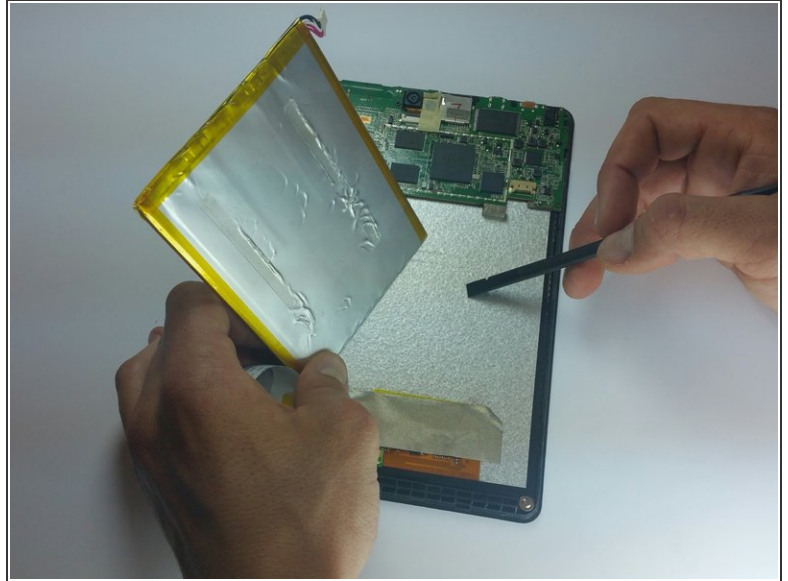
- Use a spudger to carefully disconnect the battery connector from the motherboard.
- ⚠ When working with electronics, it's important to choose a tool that's ESD-safe to avoid accidental damage to the device. The regular black nylon spudger or a plastic opening tool should be used whenever possible.

## Step 4



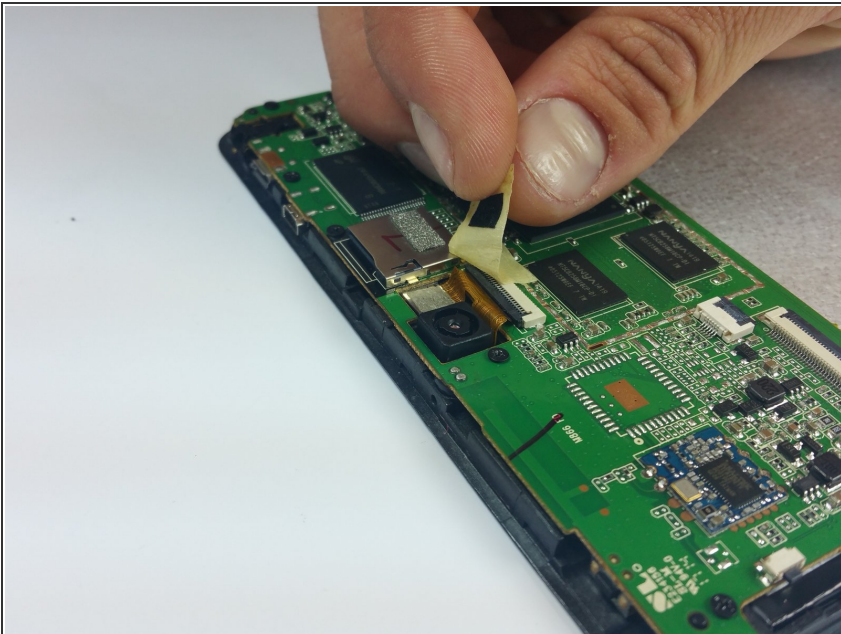
- Use a spudger to lift up the black bar on the two ZIF connectors located above the battery.
- Pull the ribbon cables out of the connectors with tweezers or two fingers.

## Step 5



- Using the flat end of a spudger, carefully work the spudger under the battery, lifting it off of the device.
- ⓘ The battery is very malleable, so do not try to pull it off all at once.

## Step 6 — Camera



- Slowly pull up masking tape by pulling down from the top.
- ⓘ Be careful because both the front and rear cameras are attached to each other.

## Step 7



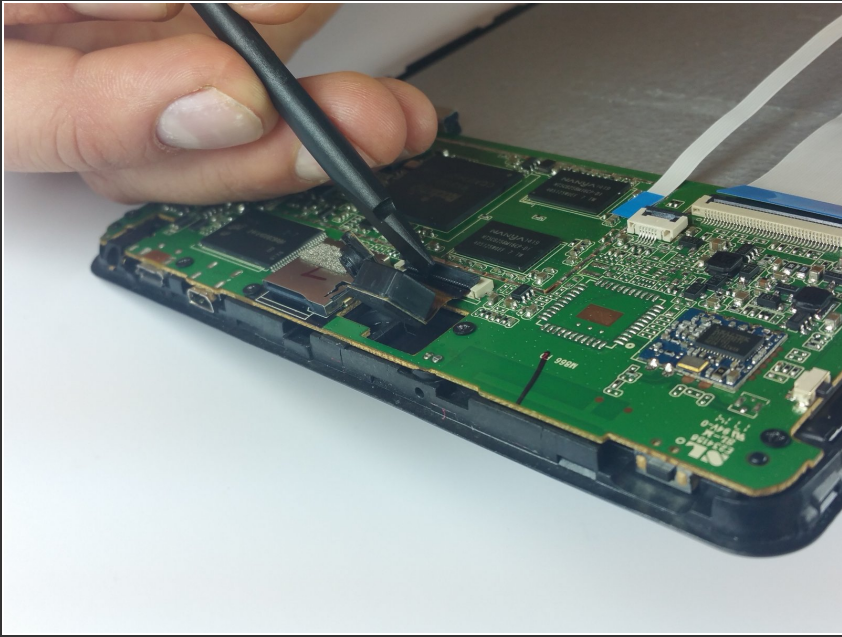
- Peel the bottom part of the masking tape off to reveal the ribbon connector.

## Step 8



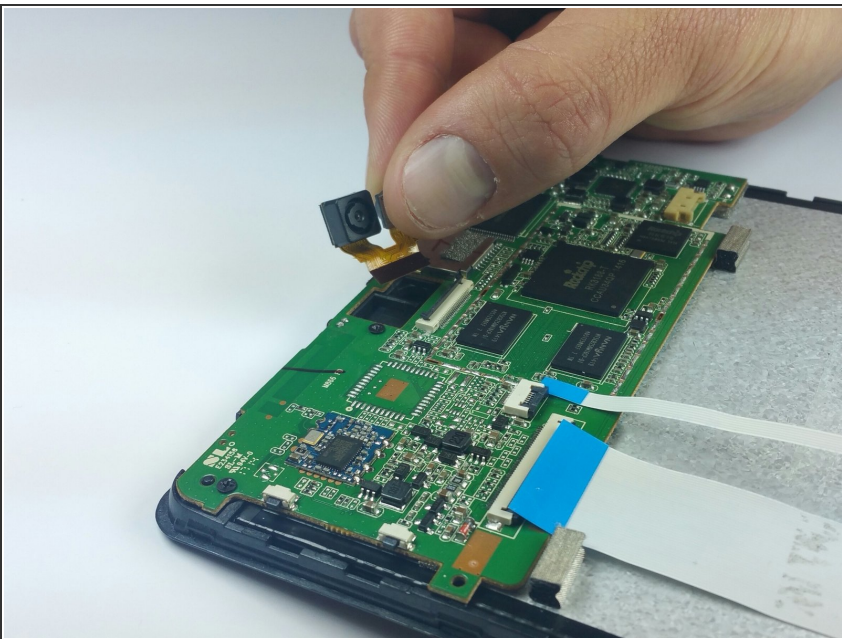
- Pull both camera lenses out of the holes.

## Step 9



- Use a spudger to disconnect the two camera lenses from the device.
- Carefully lift the black connector to release the cameras.

## Step 10



- Pull both camera lenses out of the ribbon connector.

To reassemble your device, follow these instructions in reverse order.