



Samsung HMX-QF20 Lens Cover Replacement

Replace a broken or jammed lens cover.

Written By: Renee

INTRODUCTION

Before replacing the lens cover, check to make sure the switch on the side is not temporarily stuck. If not and your lens cover is in need of replacement, follow this guide.



TOOLS:

- [Phillips #00 Screwdriver](#) (1)

Step 1 — Lens



- Remove the 4 mm screw on the underside of the camcorder near the tripod mount.

Step 2



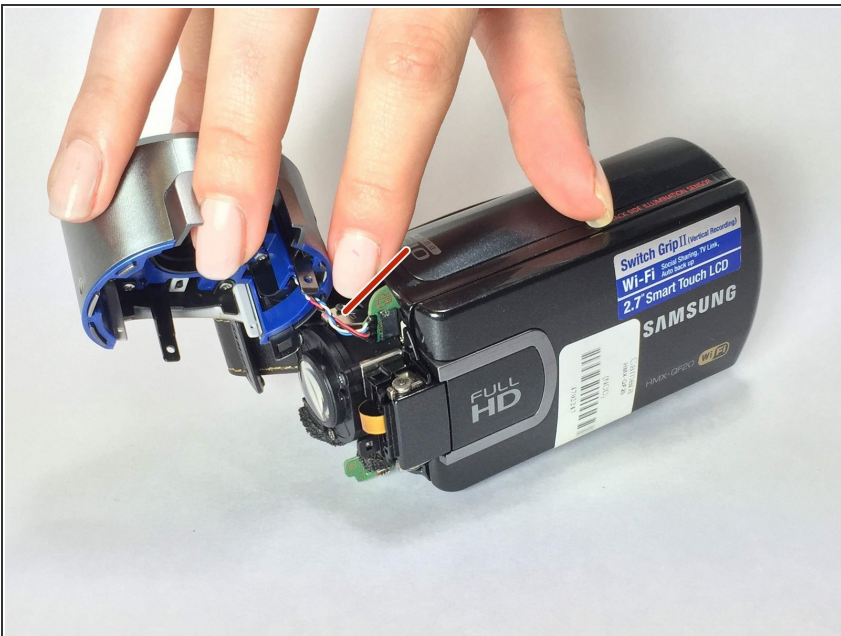
- Remove the 4 mm screw next to the buckle of the hand strap closest to the lens.

Step 3



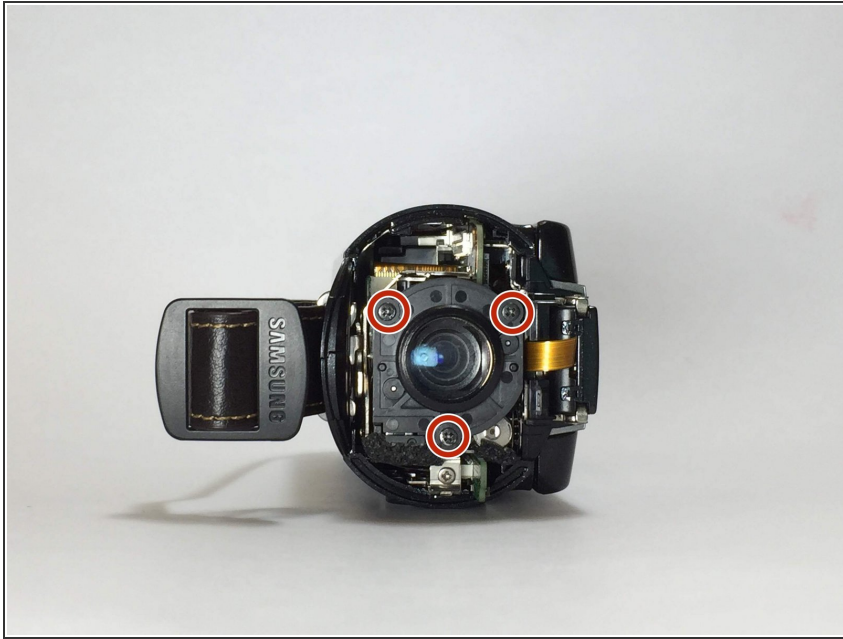
- Open the LCD screen. Remove the 4 mm screw on the inside panel, located at top left corner.

Step 4



- Firmly grip and pull the front casing on the lens to remove it.
- ⚠ Be sure to remove the front casing at gently as possible to prevent damaging the attached ribbon cable. If not careful, the ribbon cables could be torn.

Step 5



- Remove the three 5 mm screws surrounding the lens.

To reassemble your device, follow these instructions in reverse order.