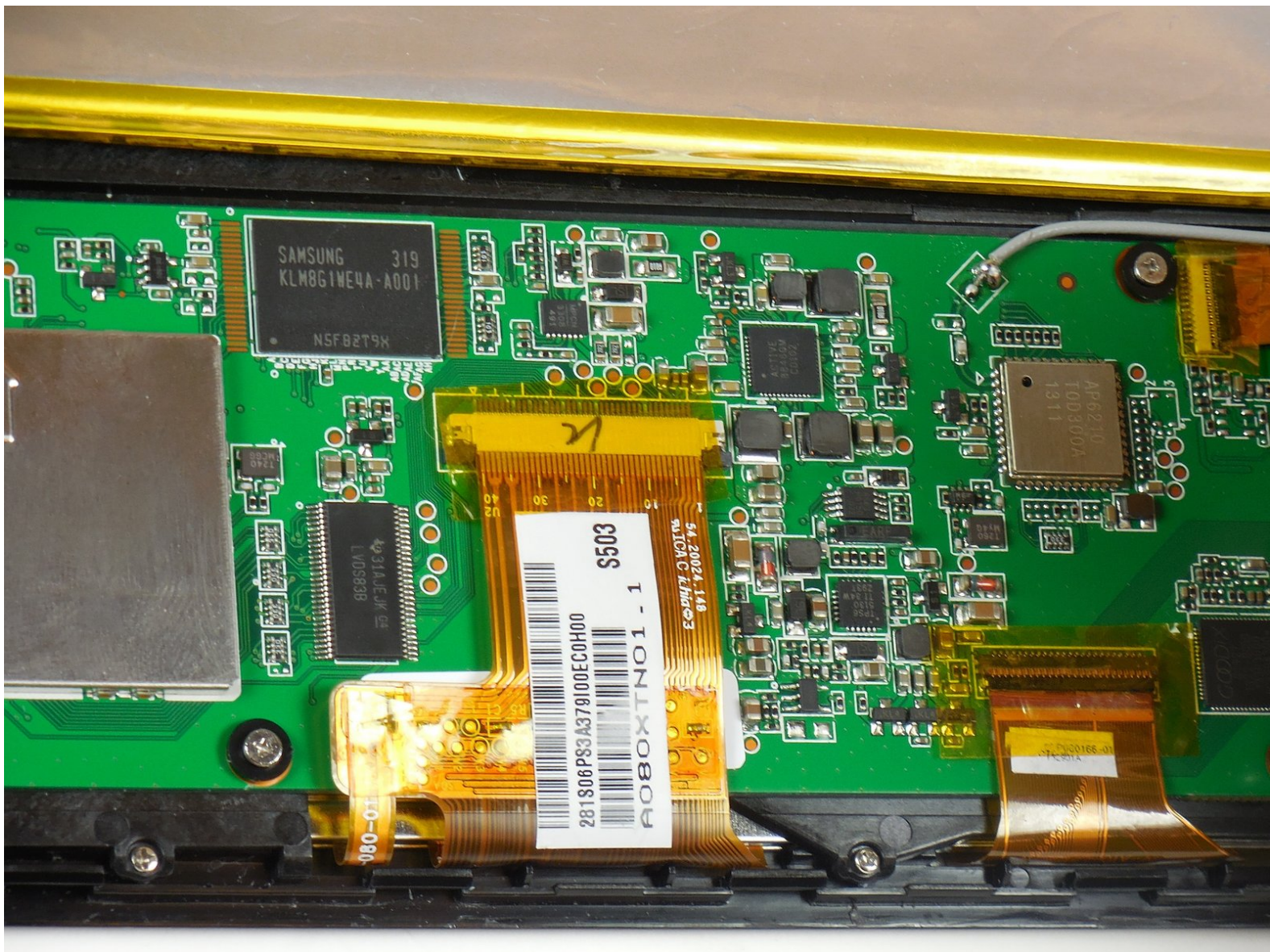




# Disassembling Insignia Flex 8 Circuit Board

This guide will help you disassemble the internal circuit board and casing.

Written By: Tyler Tyrrell



# INTRODUCTION

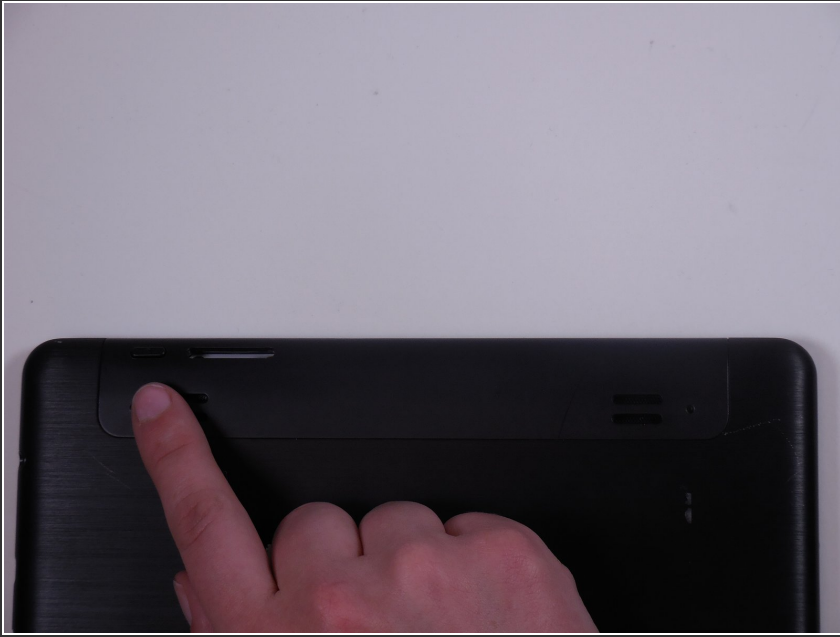
This guide should be completed before starting the other guides.



## TOOLS:

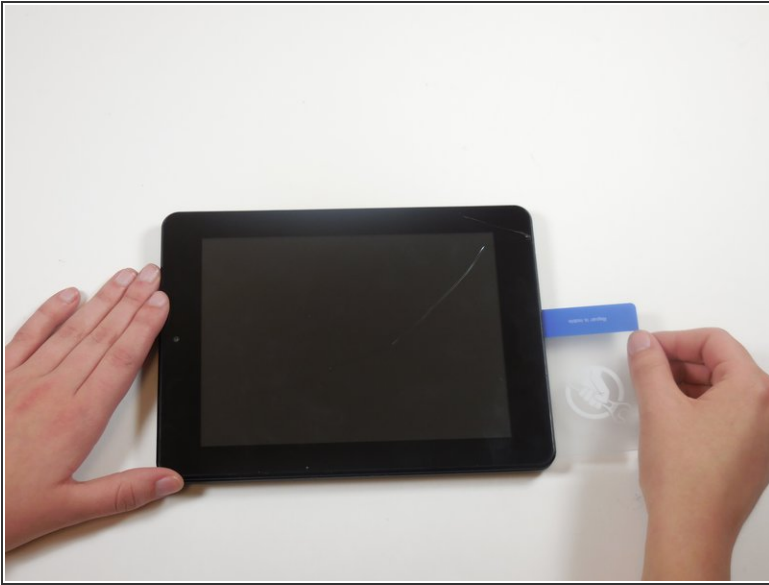
- [Metal Spudger](#) (1)
  - [Phillips #00 Screwdriver](#) (1)
  - [Plastic Cards](#) (1)
-

## Step 1 — Circuit Board



- ⚠ Turn off the power to your tablet to avoid injury.
- ℹ Position the tablet so that the screen is face down and the power button is located in the upper left hand corner.
- Hold down the power button for five seconds until the tablet powers down.

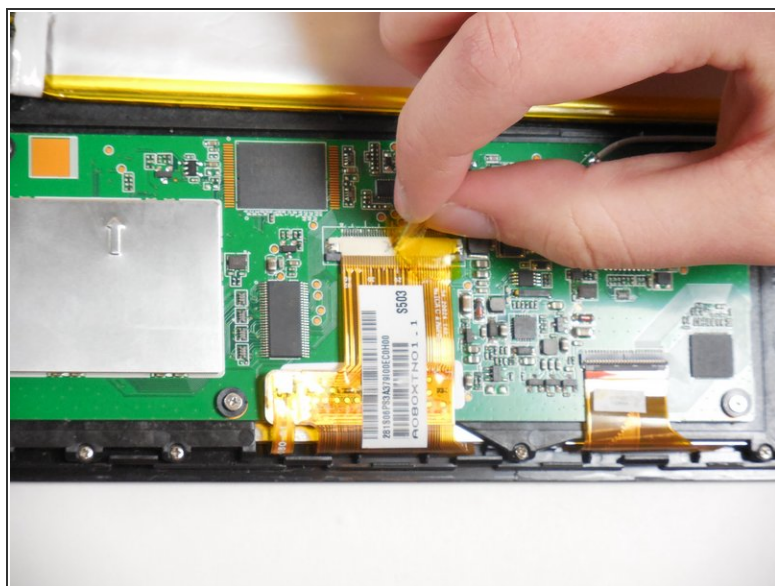
## Step 2



- Remove the back casing from the screen by sliding a credit card or a similarly thin but firm object in between the casing and the screen.
- ⓘ You may need to use a spudger to initially create separation between the screen and the casing.
- ⓘ Run this object around the perimeter of the tablet until there is separation between the casing and the screen.
- Remove the back casing and set aside.

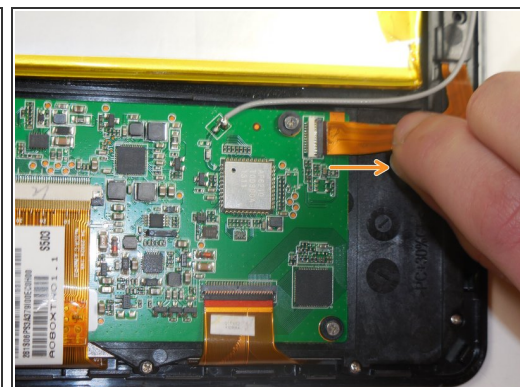
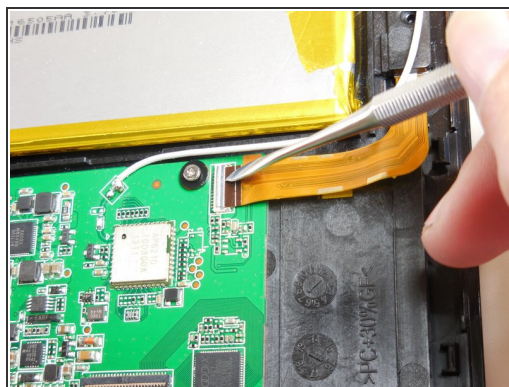
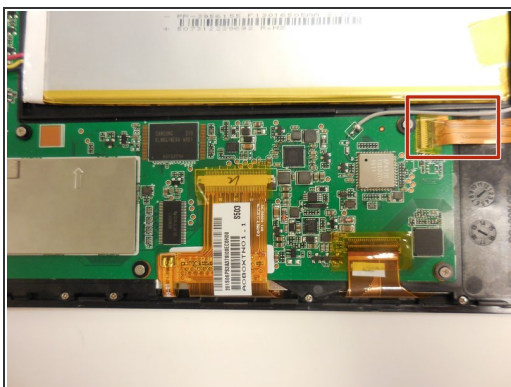


## Step 3



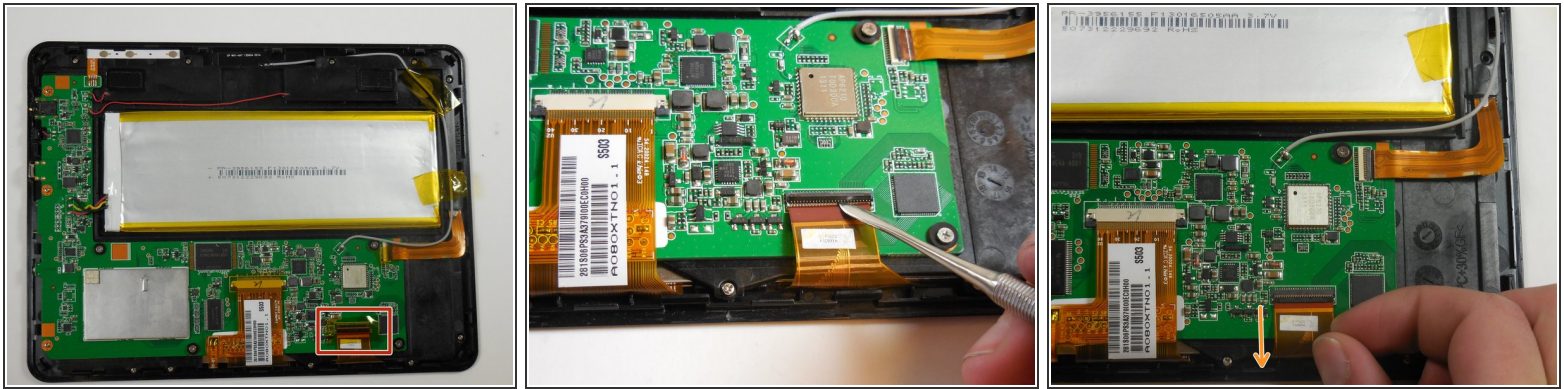
- Peel tape off of ribbon connectors. Starting at the power button, work clockwise around the tablet.

## Step 4



- To remove the camera ribbon cable, lift the flap using a spudger.
- Pull the ribbon directly back to release it.

## Step 5



- Remove the second ribbon cable by prying up the black flap using a spudger.
- Pull the ribbon cable horizontally directly away from the battery.

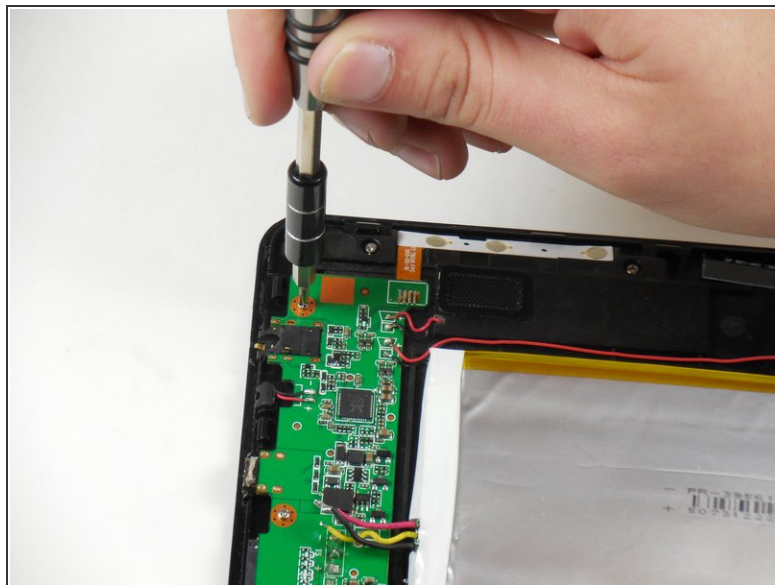
## Step 6



- Remove the final ribbon cable by pulling back the two black tabs on either side of the ribbon cable.
- Pull the ribbon horizontally directly away from the battery.

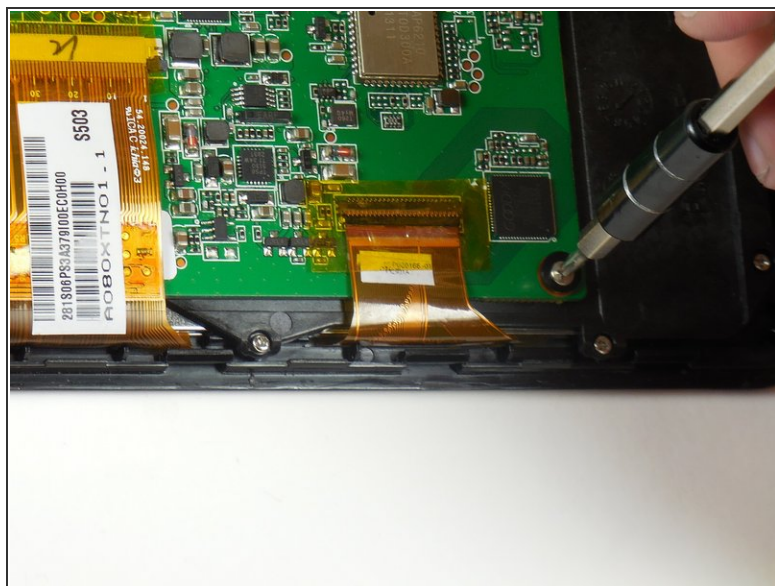


## Step 7



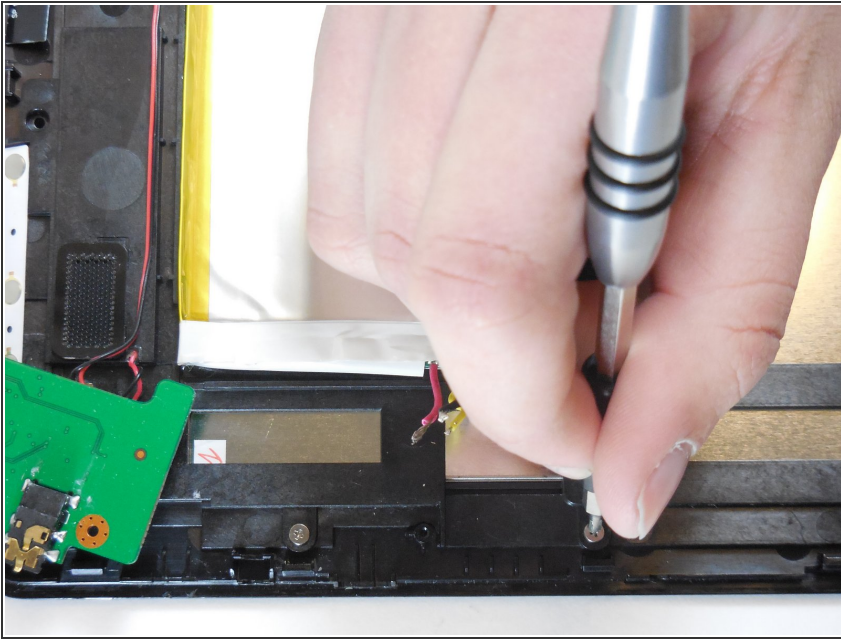
- Unscrew the thirteen 4.75mm screws around the perimeter of the tablet using a PH 00 screwdriver.

## Step 8



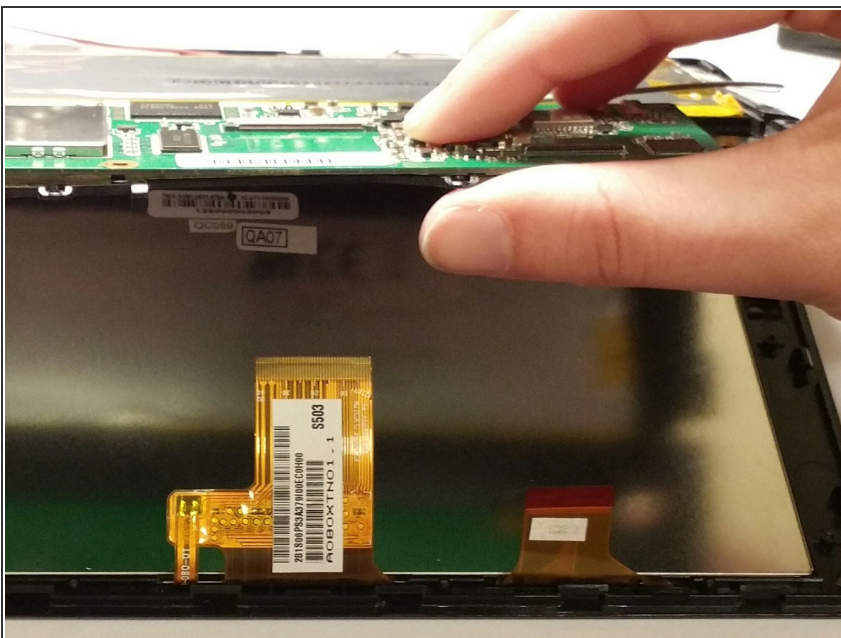
- Unscrew the four 3.75mm screws and plastic washers using a PH 00 screwdriver.
- Lift up the circuit board.

## Step 9



- Unscrew the final two screws that were underneath the circuit board.
- ⓘ These screws are near the charging port and USB adapter.
- ⓘ These screws are also 3.75mm and can be interchanged with the second set of screws only.

## Step 10



- Lift the circuit board and black internal mounting piece away from the screen.
- Set the circuit board aside.
- ⚠ Be careful of the soldered antenna as you separate the pieces.
- ⚠ Be careful of the soldered ribbon that is connected to the power source. This ribbon is fragile.

To reassemble your device, follow these instructions in reverse order.