



Necklace Chain Repair

This guide will walk you through the steps needed to reattach the jump ring on a necklace chain.

Written By: Stephanie Lascola



INTRODUCTION

More often than not, necklaces brake. No matter how old or how valuable, the most common breakage occurs when the jump ring slit gets pulled apart and the chain slips out. However, this is an easy fix!



TOOLS:

- [Small Needle Nose Pliers](#) (1)



PARTS:

- [Jump Ring](#) (1)

Step 1 — Necklace Chain Repair



Figure A

- Look closely at where the necklace chain came apart. You will see a split ring, otherwise known as a jump ring.
- Figure A: The jump ring is located on one end of the necklace.

Step 2



Figure B

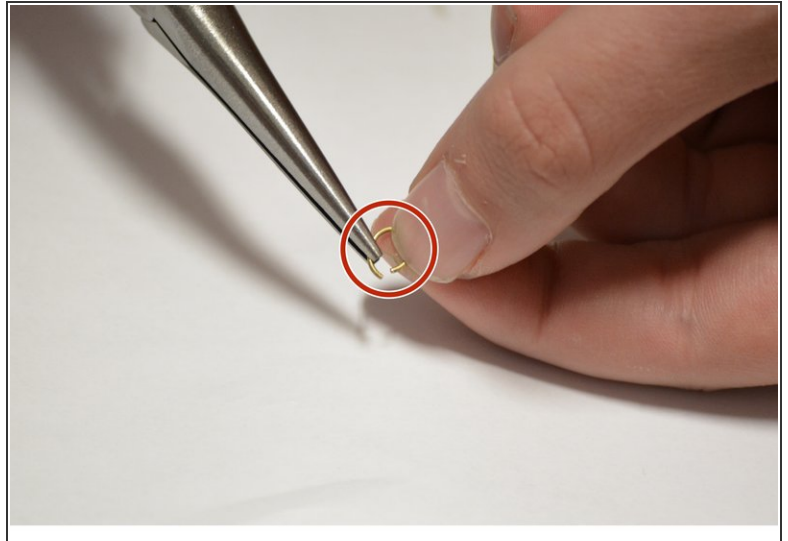


Figure C

- Figures B and C: While holding the needle nose pliers in one hand, clamp onto one end of the jump ring and hold on to the other end with your thumb and index finger.
- Carefully pull on the ends of the jump ring until the opening is large enough to accommodate one of the chain links.



Warning: Do not separate the jump ring ends too far apart, otherwise damage to the jump ring may occur.

Step 3



Figure D



Figure E

- Now that the jump ring opening is separated, you can reattach the chain. Find the end of the chain that had detached from the necklace.
- Figures D and E: While holding the jump ring in one hand and the end of the necklace in your other hand, proceed to loop the chain into the opened jump ring.

Step 4



Figure F

- Figure F: Using similar methods from Step 2 Figure C, clamp onto one end of the jump ring slit with your pliers and hold on to the other end with your thumb and index finger.
- Carefully close the opening of the jump ring.

Step 5

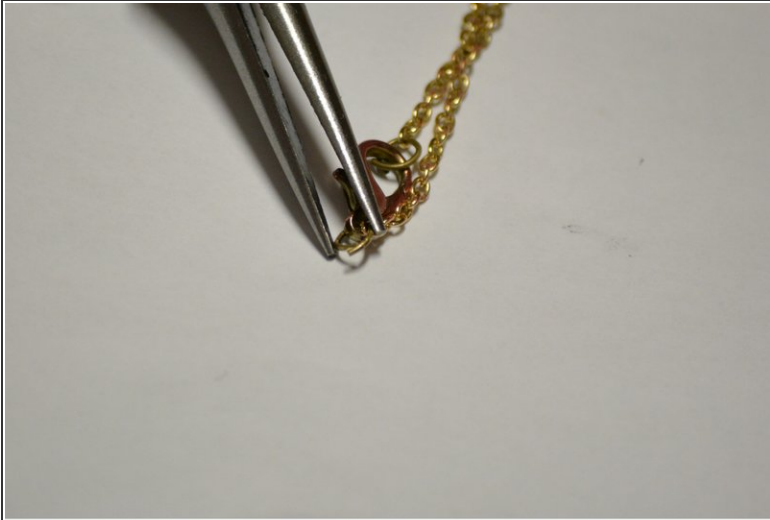


Figure G



Figure H

- Figure G: It is time to close the jump ring. With your pliers, clamp on both ends of the jump ring and push together so the two ends of the jump ring slightly overlap.
- Refer to Figure H for finished assembly.

To make sure the necklace is correctly reattached, gently pull on the chain. The jump ring should be firmly closed as to prevent the chain from slipping off the jump ring.