



Beats Pill XL Speaker Replacement

This guide will assist the user in replacing any one of the four speakers on the Beats by Dr. Dre Pill XL.

Written By: Michael



INTRODUCTION

In this guide, the process of speaker replacement is shown.



TOOLS:

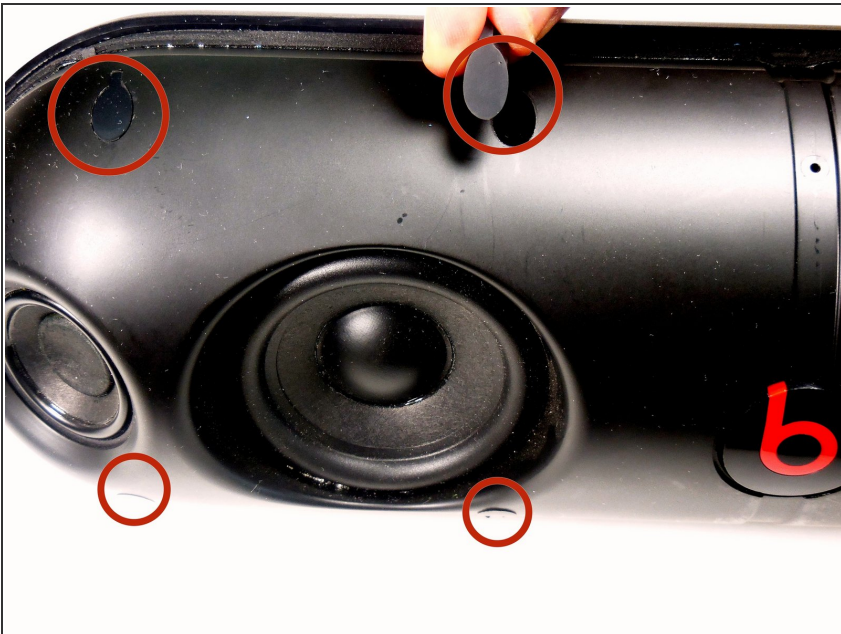
- [Phillips #2 Screwdriver](#) (1)
 - [iFixit Opening Tools](#) (1)
-

Step 1 — Case



- Using a plastic opening tool, pry the casing from the rest of the device.
 - Pry all the way around the edge and then pull apart.
- ⓘ It should be relatively easy, to pull apart. Don't be afraid to apply a necessary force.

Step 2



- Using your thumb, remove the 8 rubber plugs in order to get to the screws.
- Simply rub them towards the speakers and they will slide out enough to grip the edge and pull them out.
- ⓘ In the picture provided, we labeled four of them on one side of the Beats Pill XL. The other four are symmetrical to these four on the other side of the device.

Step 3




- Using a Phillips #2 screwdriver, remove the 8 (10mm maxi-loc Phillips #2) screws that hold the casing together.

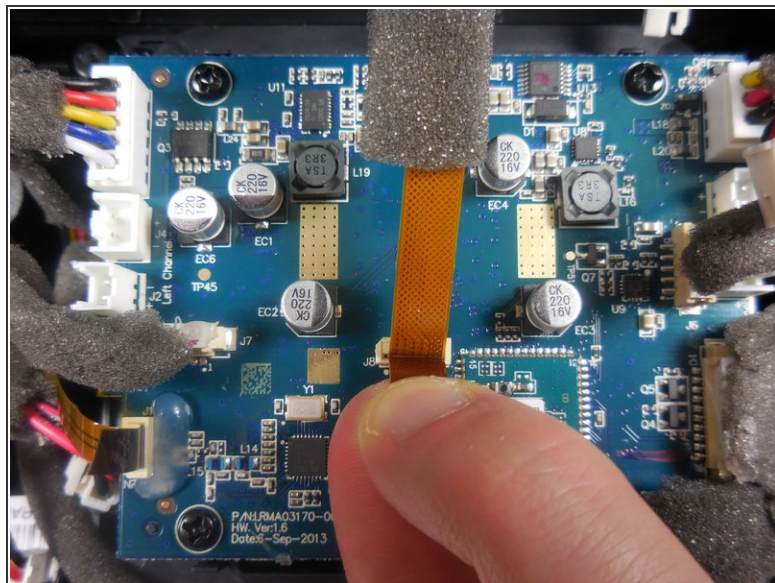
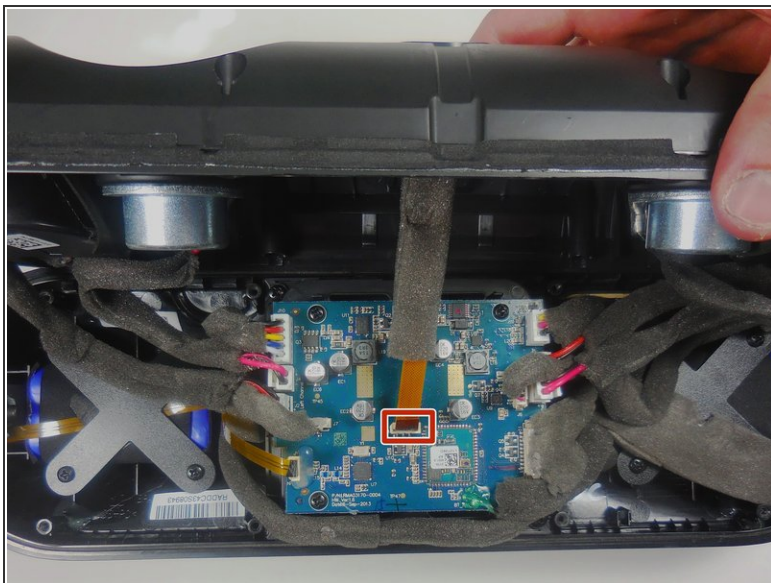
Step 4



- Pull apart the front casing from the back casing, slowly. Try to avoid any tension on any of the connected cables.

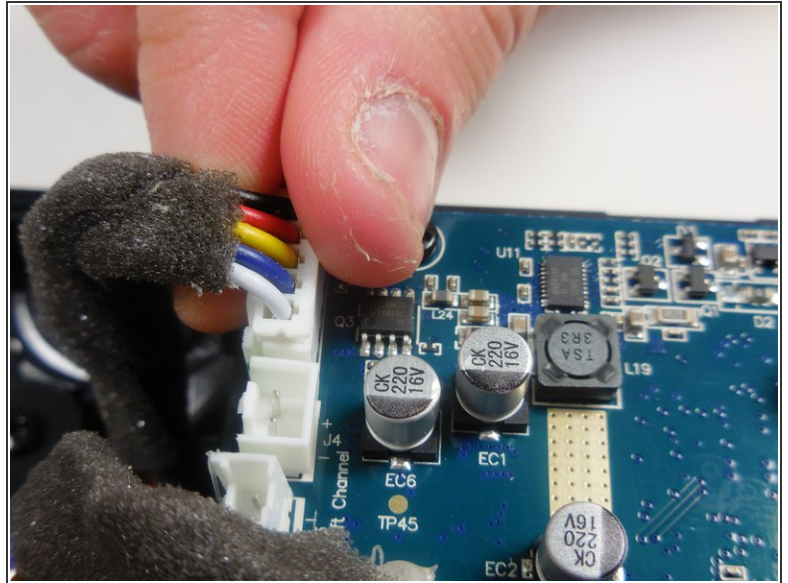
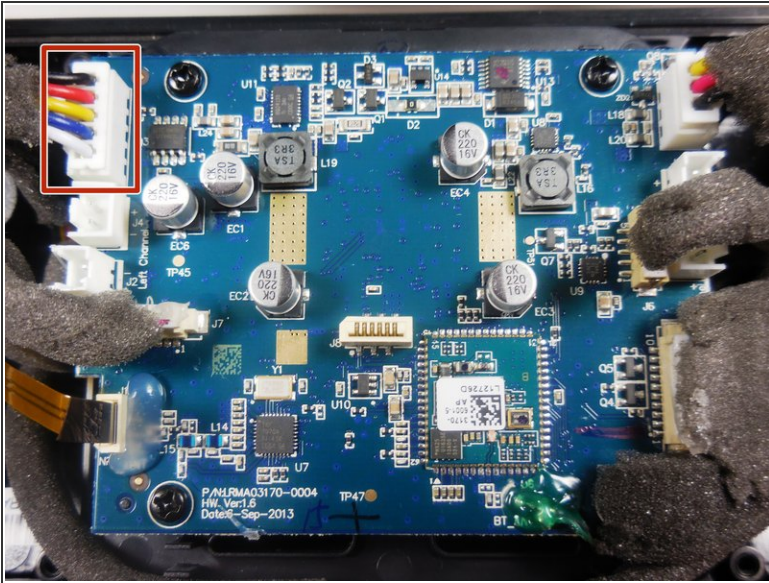
 Separate at a slow constant force to avoid damage to the ribbon cables.

Step 5



- Gently pull on the plastic tab at the base of the ribbon cable to remove it from the motherboard.
- ⚠ Never pull the cables by the cord, as this could cause damage to the cables and/or motherboard. Always disconnect the cables from the base by the motherboard.

Step 6



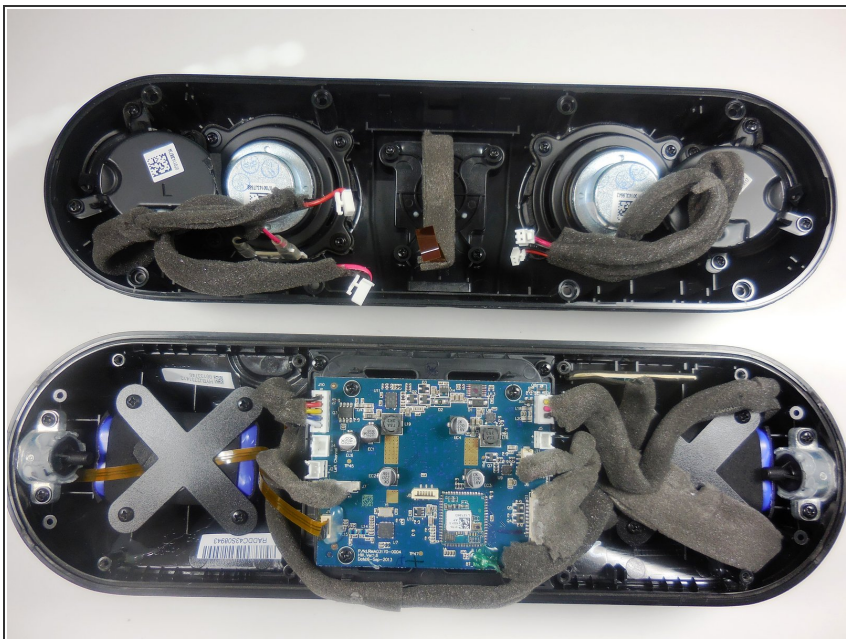
- Using your thumb and index finger, pull upwards on the base of the the power cable to remove it from the motherboard.
- ❗ Even though there are two batteries, there is only one cable connecting the two to the motherboard.

Step 7 — Speaker



- After completing the guide for removing the case, remove the cables connecting the speakers.
- Simply pull up on them without pulling on the wires themselves.

Step 8



- Set the half of the device not containing the speakers to the side.

Step 9



- Using a Phillips #2 screwdriver, remove the 4 (8mm maxi-loc Phillips #2) screws holding the speaker to the case.

Step 10



- While holding the case with one hand, pull up on the speaker you wish to replace.
- ⓘ This guide showed how to replace one of the two larger speakers, but the two smaller speakers are replaced the same way.

To reassemble your device, follow these instructions in reverse order.