



Canon PowerShot S100 LCD Screen Replacement

This guide will demonstrate how to remove the LCD screen from the camera.

Written By: Ricky



INTRODUCTION

The LCD screen can be removed and replaced. Photos, videos, and the camera menus are displayed on the LCD screen.



TOOLS:

- [Phillips #00 Screwdriver](#) (1)
 - [Tweezers](#) (1)
 - [Spudger](#) (1)
-

Step 1 — Outer Case



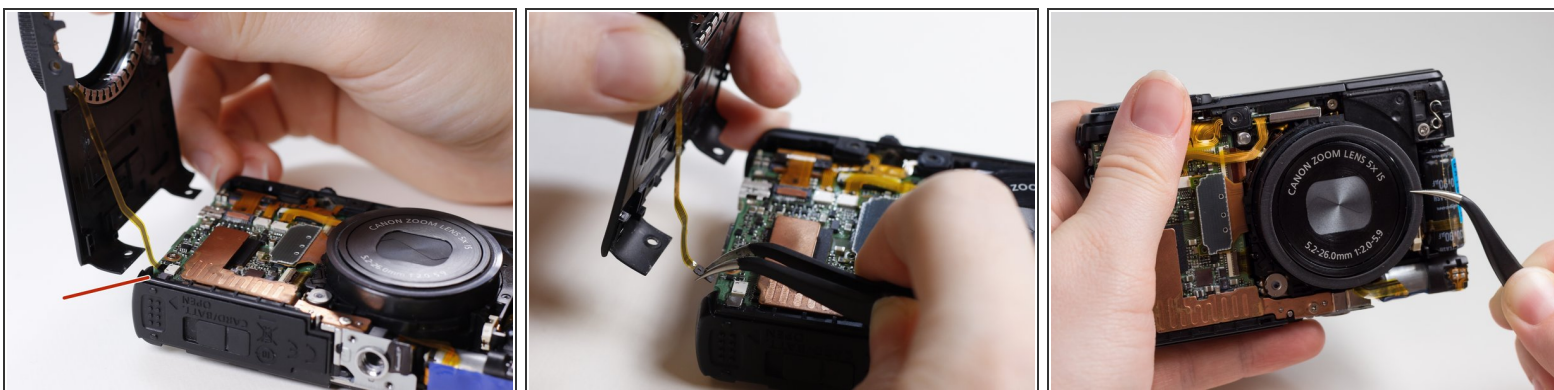
- Remove the 2 screws (3.2mm, Phillips #00) found on the bottom side of the camera.
- Remove the 2 screws (3.2mm, Phillips #00) found on the side of the camera.
- Remove the 2 screws (3.2mm, Phillips #00) found on the side of the camera where the terminals are.
- Open the flap revealing the cable inputs and remove the final screw (3.8mm, Phillips #00) found inside.

Step 2



- Turn the camera so that the LCD screen is facing you.
- Remove the back panel by pulling it off of the camera.

Step 3



- Turn the camera so that the lens is facing you.
 - ⚠ Do not pull the front panel off without removing the ribbon cable first.
- Slowly lift the front panel from the camera.
- The ribbon cable is connecting the front panel to the camera. Using the tweezers, gently pull the ribbon cable out of its socket.
 - ⓘ A spudger may also be used to remove the ribbon cable.
- Remove the rubber guard that rests on top of the lens.

Step 4 — Control Dial Assembly



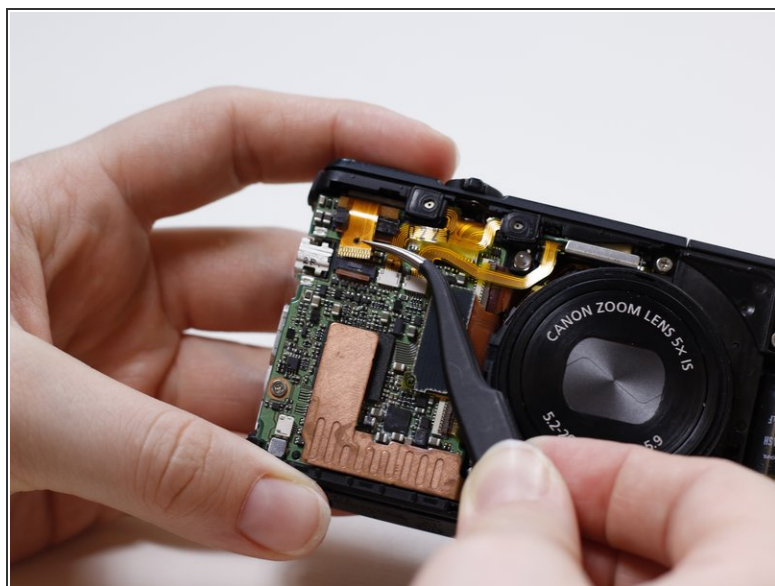
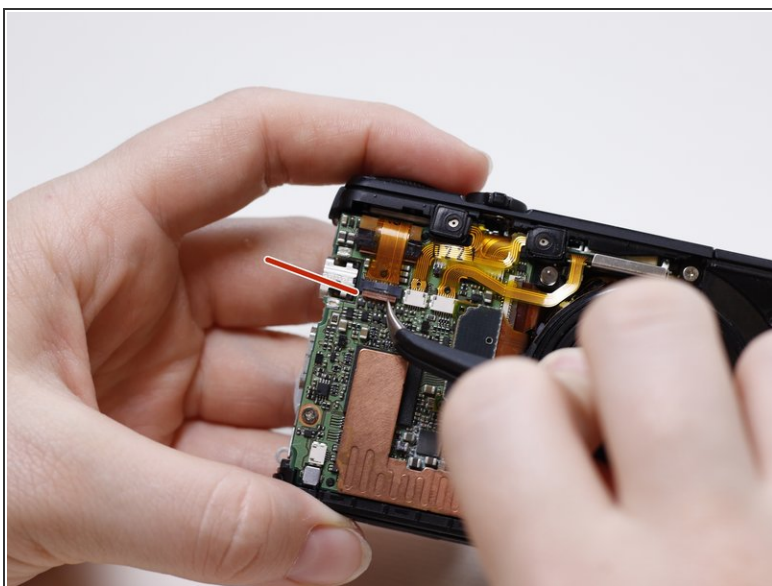
- Turn the camera over so that the LCD screen is facing you.
- Remove the screw (3.9mm, Phillips #00) that is attaching the thin metal frame to the camera.
- Remove the 2 screws (3.1mm, Phillips #00) that are attaching the control dial panel to the camera.

Step 5



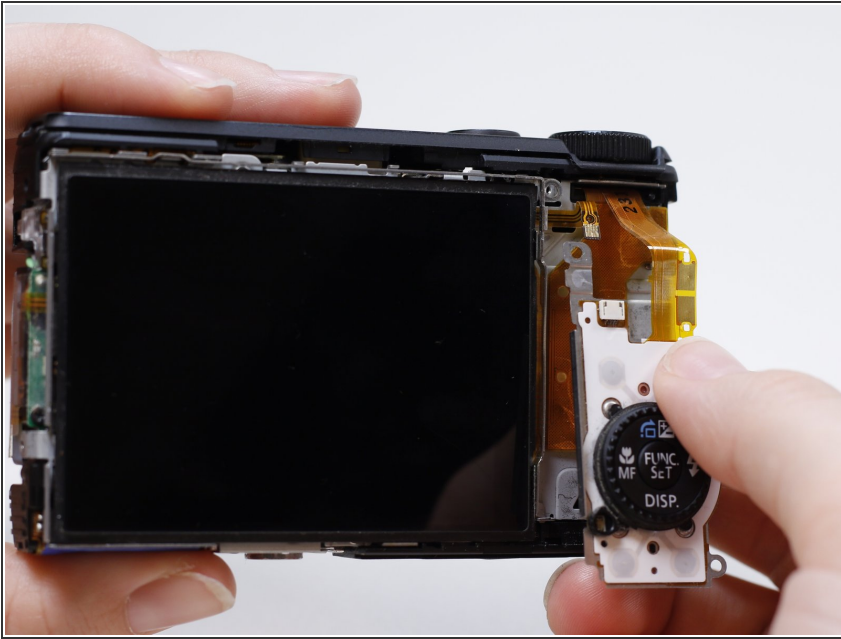
- Using the tweezers, detach the ribbon cable that is connected to the dial panel.
- ⓘ A spudger may also be used to remove the ribbon cable.

Step 6



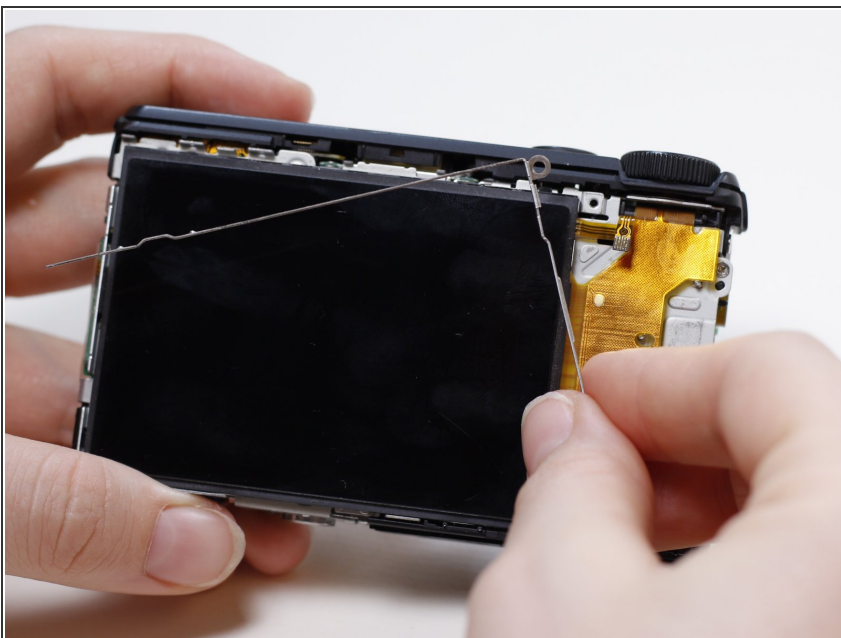
- Turn the camera over so that the lens is facing you.
- Using the tweezers, gently lift the flap that is securing the ribbon cable to the motherboard.
- Using the tweezers, remove the ribbon cable from its socket.
- ❗ A spudger may also be used to remove the ribbon cable.

Step 7



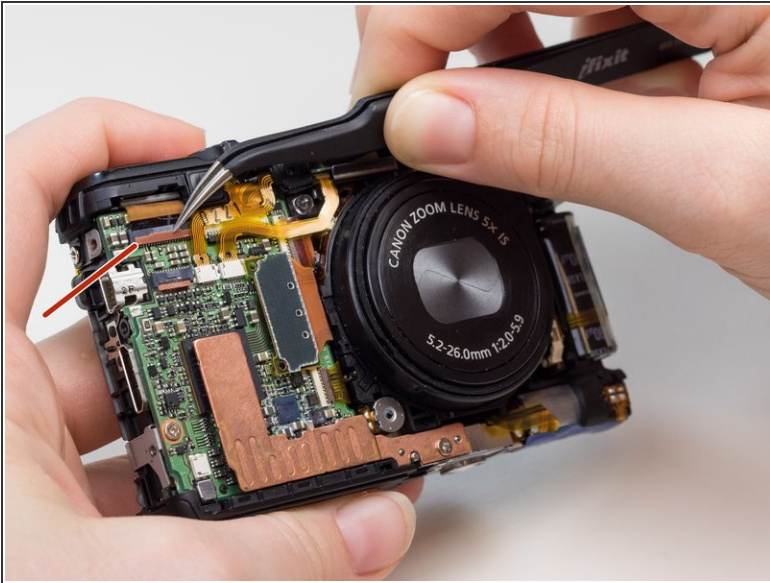
- Turn the camera over so that the LCD screen is facing you.
- Gently pull the control dial panel, and its attached ribbon cable, through the opening between the top panel and the camera body.

Step 8 — LCD Screen



- Remove the thin metal frame that runs along the top of the LCD screen.

Step 9



- Turn the camera over so that the lens is facing you.
- Using the tweezers, gently lift the flap that secures the ribbon cable to the motherboard.
- Using the tweezers, detach the ribbon cable.
- ❗ A spudger may also be used to remove the ribbon cable.

Step 10



- Turn the camera over so that the LCD screen is facing you.
- Gently pull the LCD screen, and its attached ribbon cable, through the opening between the top panel and the camera body.

To reassemble your device, follow these instructions in reverse order.