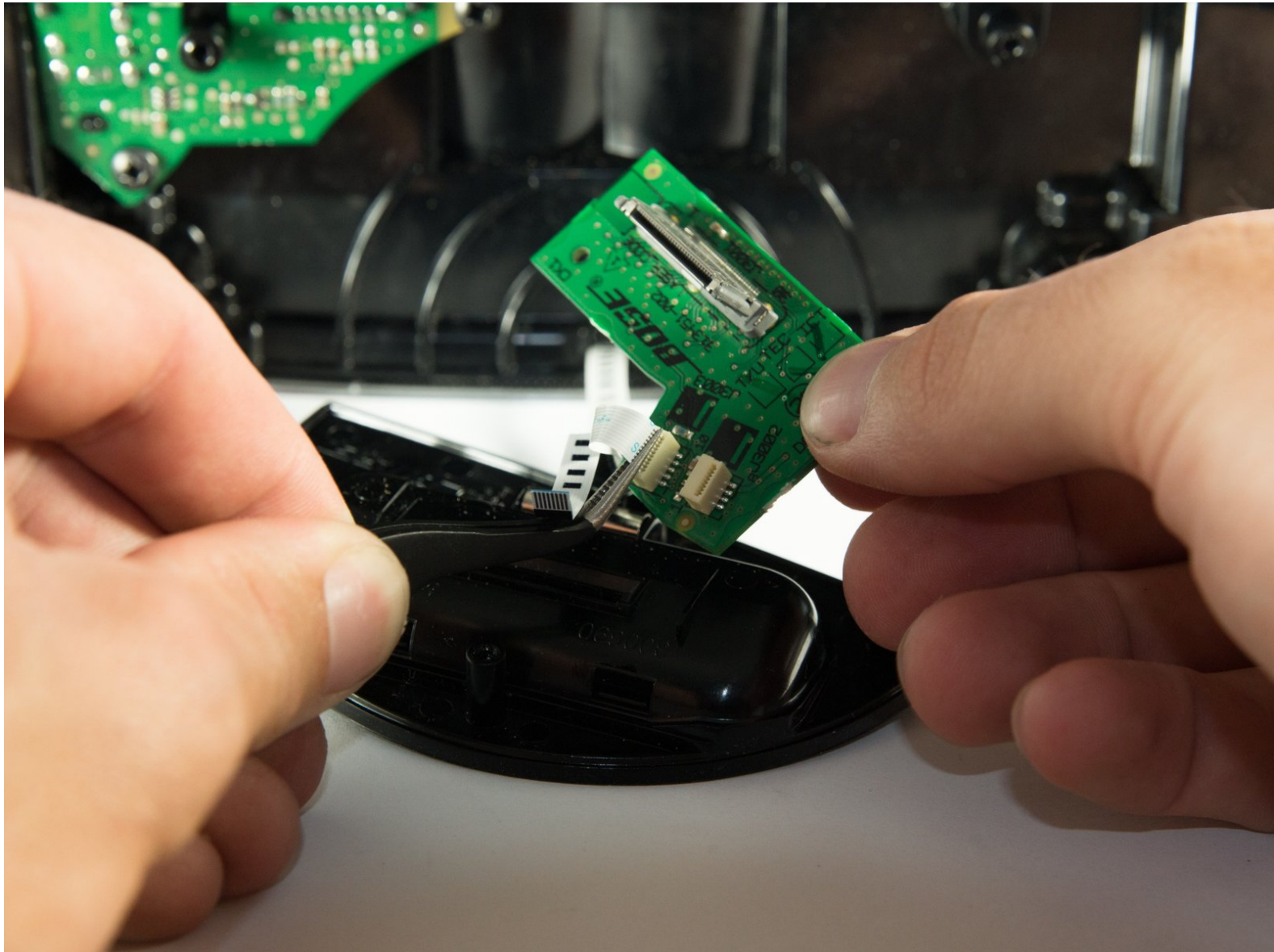




Bose SoundDock Portable v2 Docking System Board Replacement

If your docking connector is broken this guide will show you how to replace it

Written By: Evan Low



INTRODUCTION

In this guide, you will learn how to replace the docking system on your Bose SoundDock Portable v2.



TOOLS:

- [Phillips #2 Screwdriver](#) (1)
- [T15 Torx Screwdriver](#) (1)
- [T8 Torx Screwdriver](#) (1)



PARTS:

- [Portable Docking Board](#) (1)

Bose

http://www.invebo.com/store/SoundDock_Portable.html

Step 1 — Docking System Board



- Lay the speaker flat on its back, balancing on the battery.
- Remove the four rubber disks that cover the screws on the bottom of the speaker.
- Follow the [battery replacement guide](#) to remove the battery

Step 2



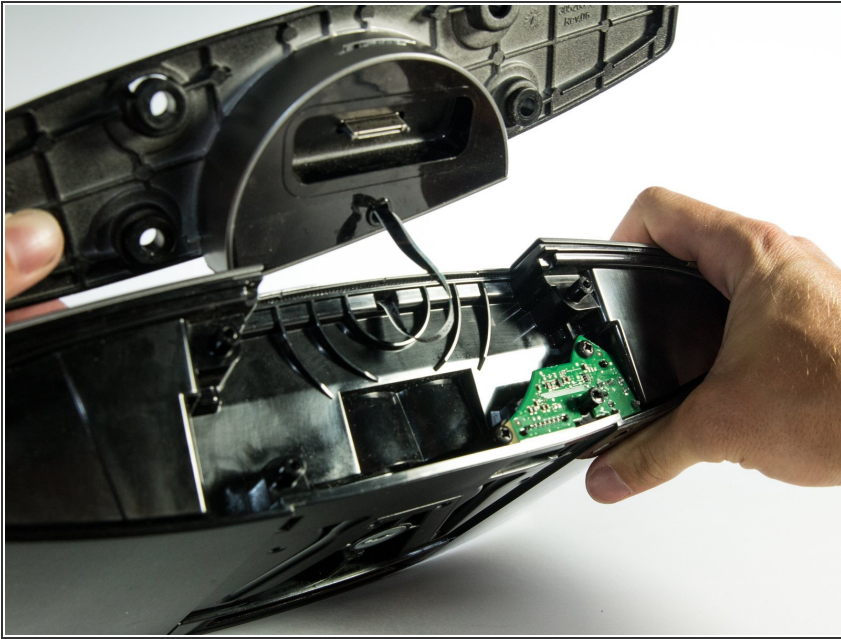
- Now, remove the four 16mm #2 screws on the bottom of the speaker. This will allow the bottom plate to be removed.
- ⓘ It may be easier to remove the battery so that the speaker will lay flat on the table.


Step 3



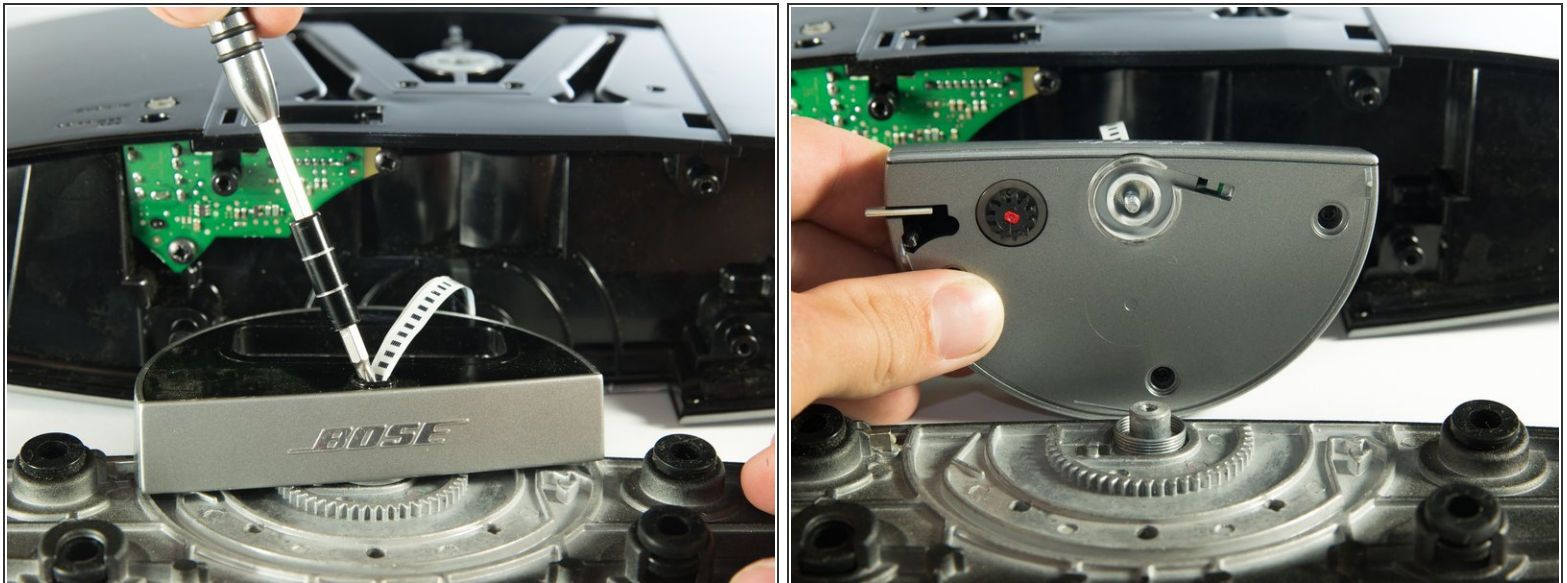
- Carefully remove the bottom panel of the speaker.
- ⓘ You may have to rock the panel back and forth to get it to slide off the plastic pegs.

Step 4



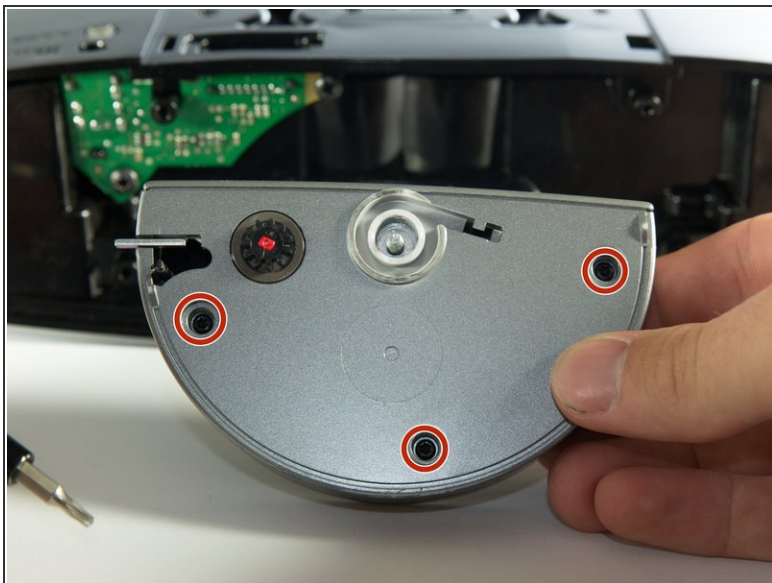
 Once the panel is removed you will see a ribbon connecting the dock to the speaker. Be careful to orient the speaker so that you can work on the dock connector without pulling on the ribbon!

Step 5



- Use a T15 Torx screwdriver to remove the dock from the base. Be careful not to damage the ribbon during this step.
- ⚠ There is a torsion spring under the dock. When removed, this spring has a tendency to fly out. To avoid this, loosen the dock until it is able to move freely. Rotate it so that there is no tension in the spring. Then, you are free to undo the screw completely.

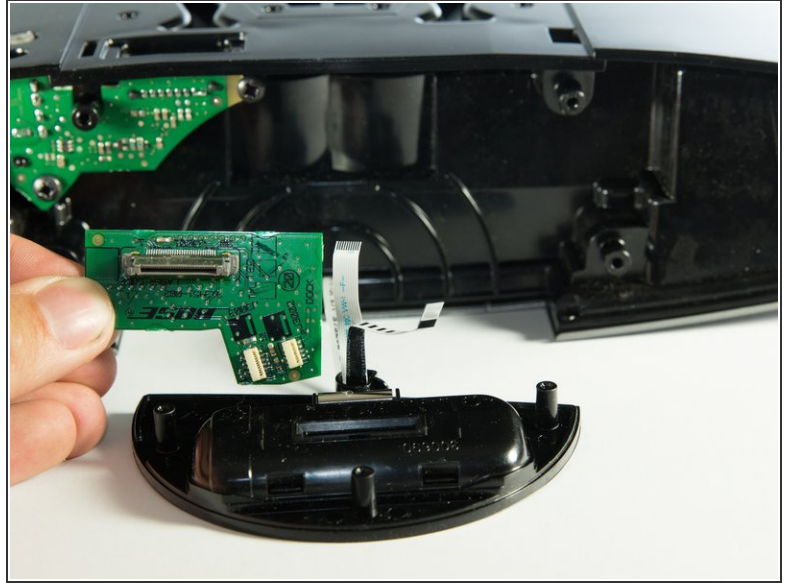
Step 6



- Remove the three 6mm T8 torques screws that hold the dock connector together and pull the top and bottom pieces apart.

⚠ There are some small parts that may fall out when the plastic pieces are separated. To minimize this, lay the piece with the dock connector facing down.

Step 7



- Once the pieces are separated, the dock connector can be lifted out of the slot.
- Using tweezers or your fingers, unplug the two ribbon connectors from the board.

To reassemble your device, follow these instructions in reverse order.