



Bose SoundDock Portable v2 IR Receiver Replacement

This guide will help you replace the IR...

Written By: Evan Low



INTRODUCTION

This guide will help you replace the IR receiver in your Bose speaker.

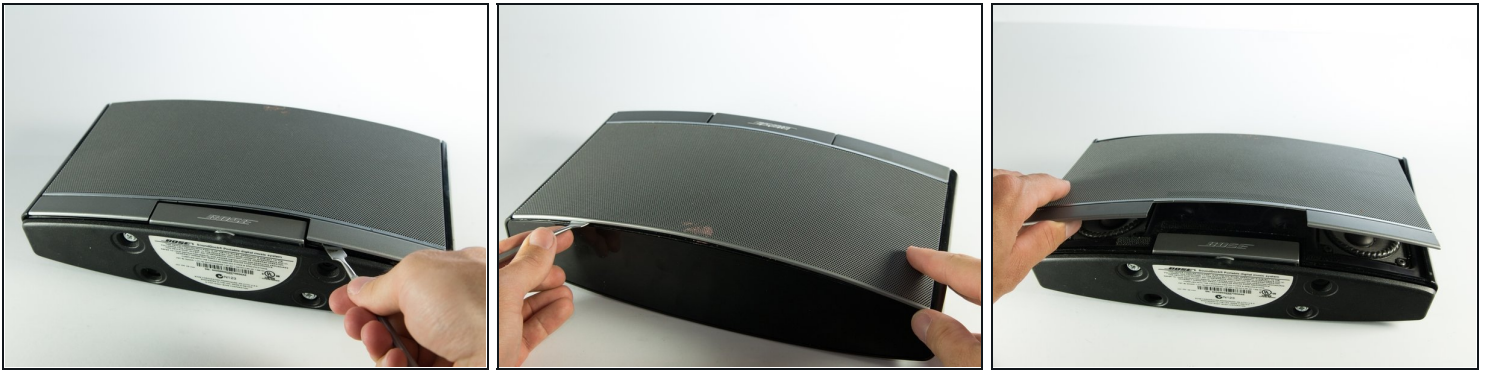
TOOLS:

T15 Torx Screwdriver (1)

Metal Spudger (1)

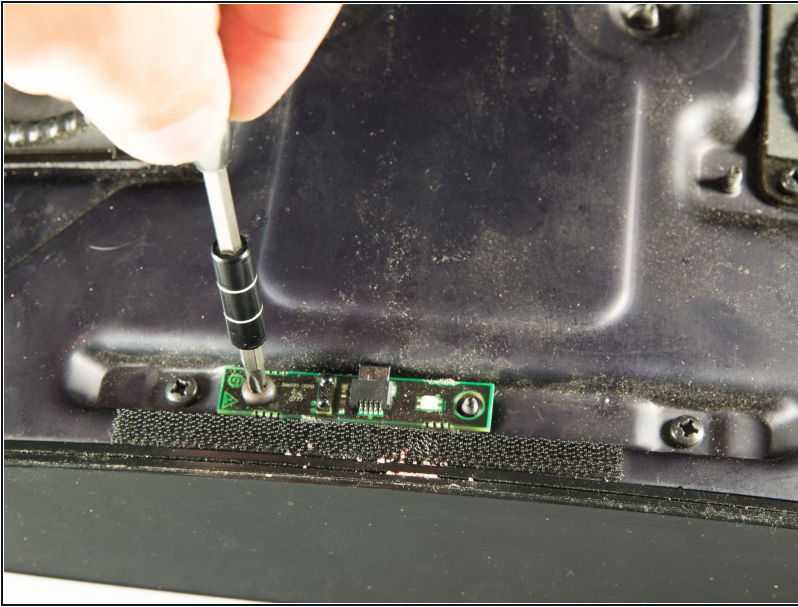
Tweezers (1)

Step 1 — IR Receiver



- Gently pry the front mesh cover off of the sound dock using a metal spudger.
- ① The mesh is held on by small velcro strips so if you hear a tearing sound it is just the velcro coming apart.

Step 2



- Using a T15 torx screwdriver, remove the 8mm screw holding the IR sensor to the speaker system.

Step 3



- Using [tweezers](#) or your fingers, gently remove the ribbon cable connecting the IR sensor to the system.

To reassemble your device, follow these instructions in reverse order.