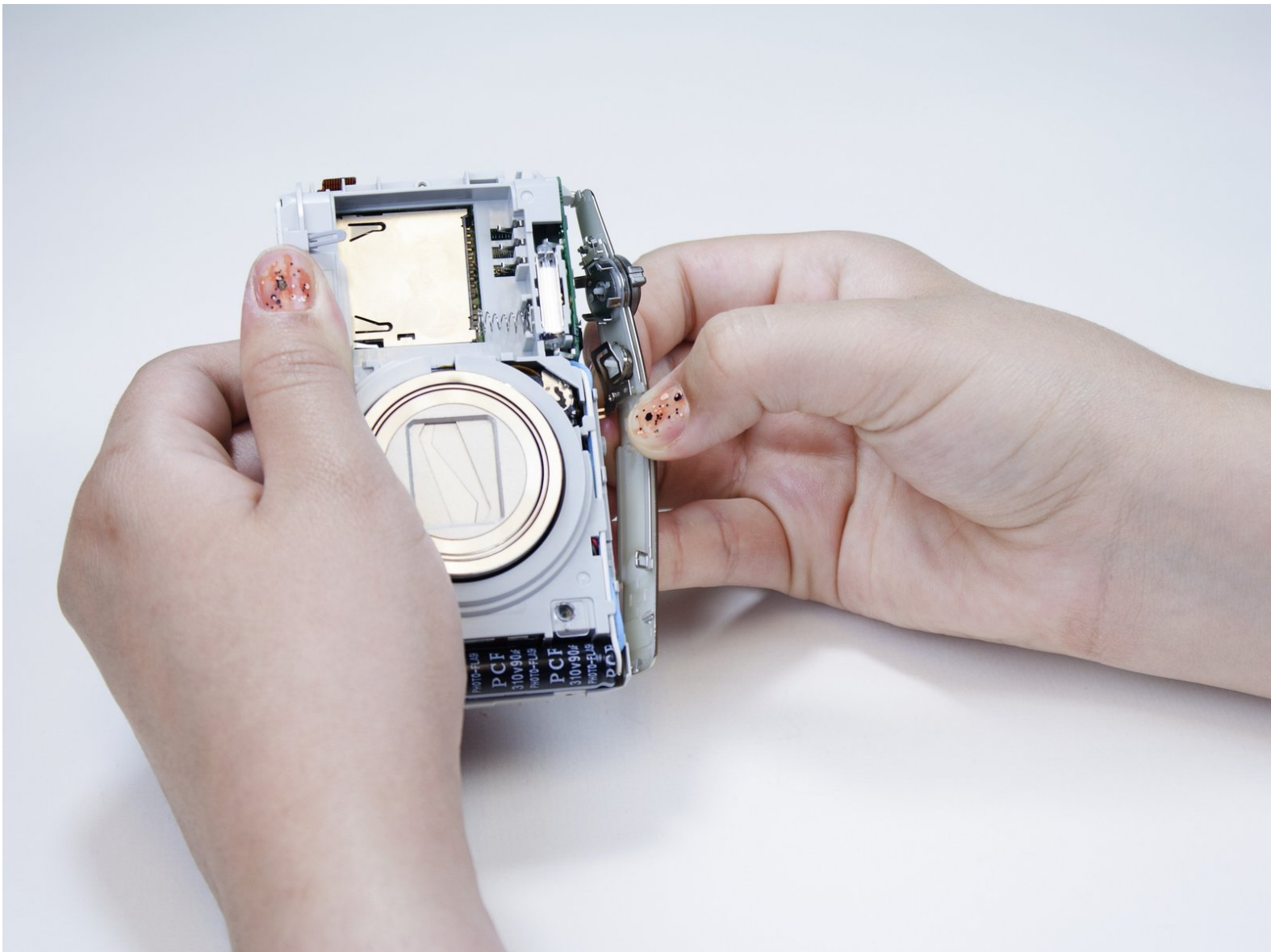




Olympus VR-350 Power Button Replacement

Remove and replace a broken power button.

Written By: Adri



INTRODUCTION

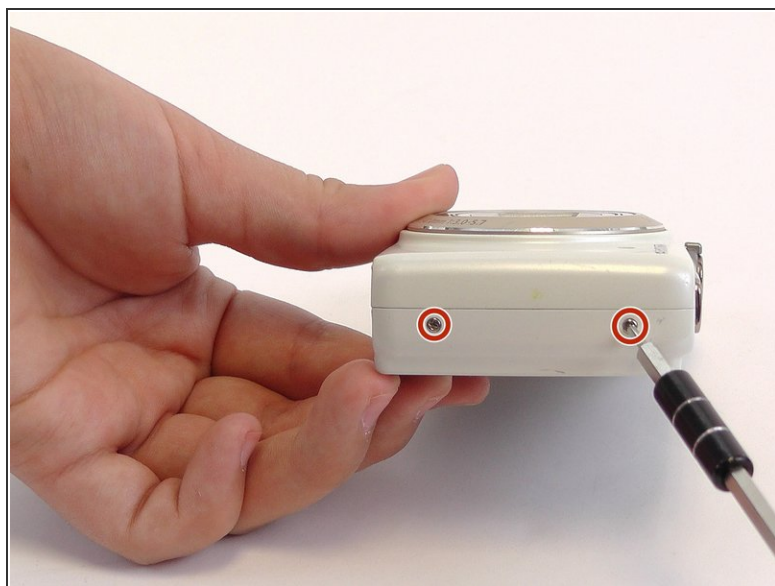
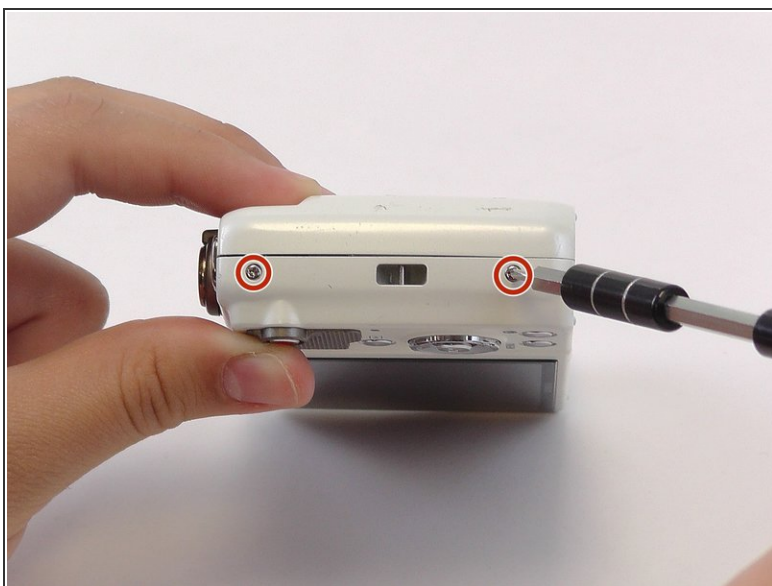
This guide will show you how to remove the camera's power button so you can replace it if it is not working.



TOOLS:

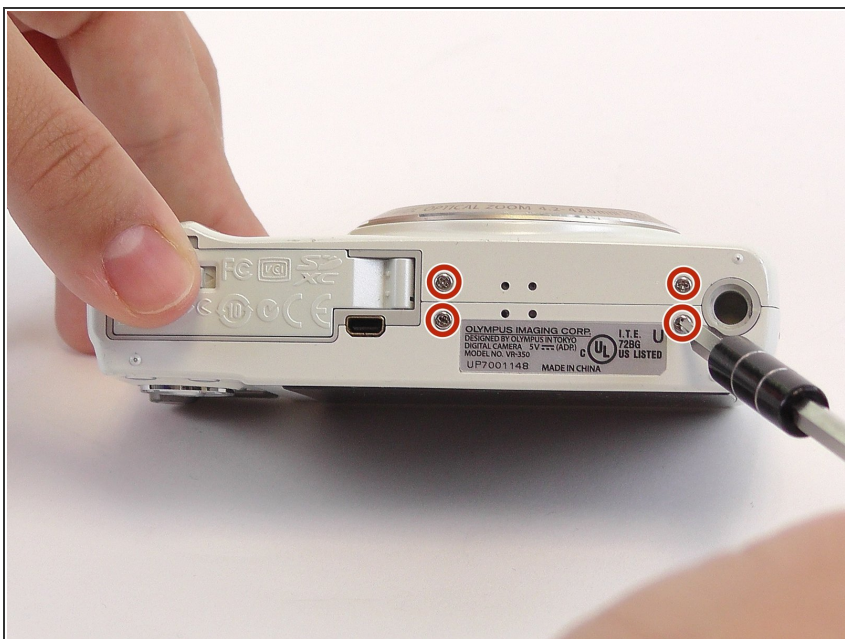
- [Phillips #000 Screwdriver](#) (1)
 - [iFixit Opening Tools](#) (1)
-

Step 1 — Front Plate



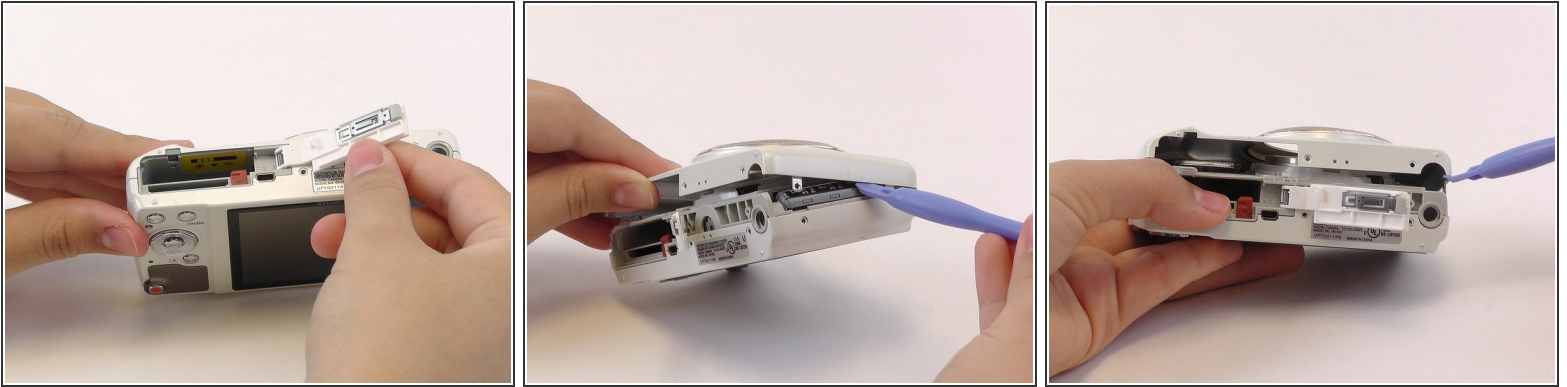
- Remove the two 4mm screws from each side of the camera with a Phillips PH000 screwdriver.

Step 2



- Remove the four 4mm screws from the bottom of the camera with a Phillips PH000 screwdriver.

Step 3



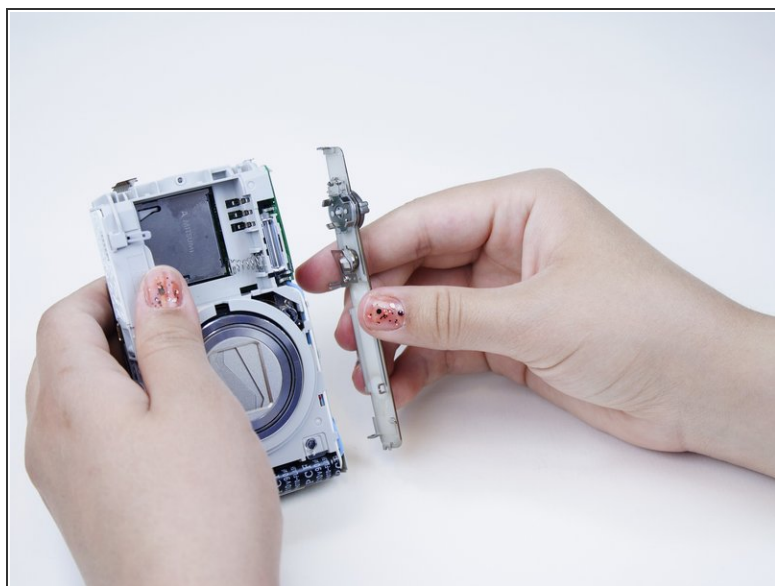
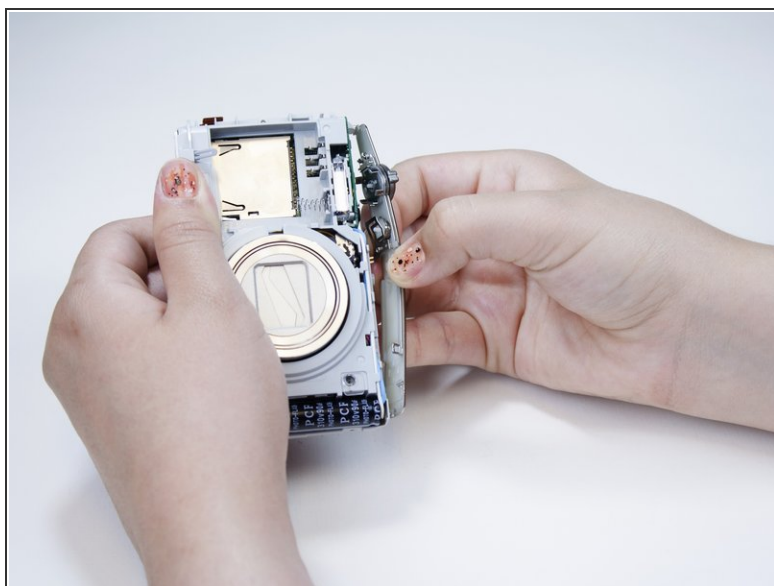
- Use the plastic opening tools and your fingers to pry the front plate from the camera.
- ⓘ You might need to open the battery cover to remove the front plate.

Step 4 — Back Plate



- Use your fingers to pry open the back cover.
- ⚠ When you remove the back of the camera, the button membrane might fall out. Don't lose this sheet.
- ⚠ The LCD screen is connected to the body of the camera by an orange ribbon cable. Don't pull this ribbon cable out.

Step 5 — Power Button



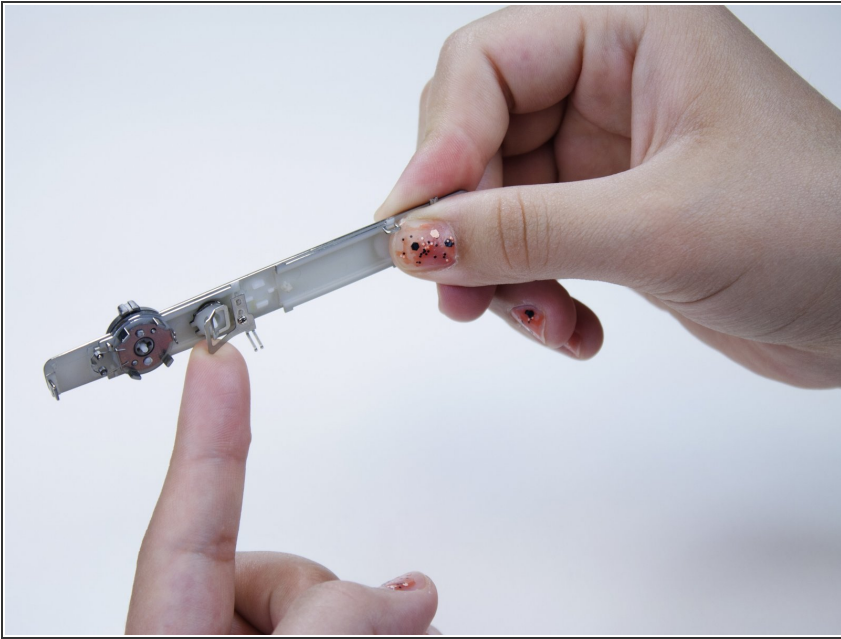
- Remove the silver panel from the top of the camera.

Step 6



- Flip the silver panel over. The power button is the smaller button covered by a metal backing.

Step 7



- Pull the metal backing away from the silver panel.

Step 8



- Push the power button down and out of the silver panel with your finger.

To reassemble your device, follow these instructions in reverse order.