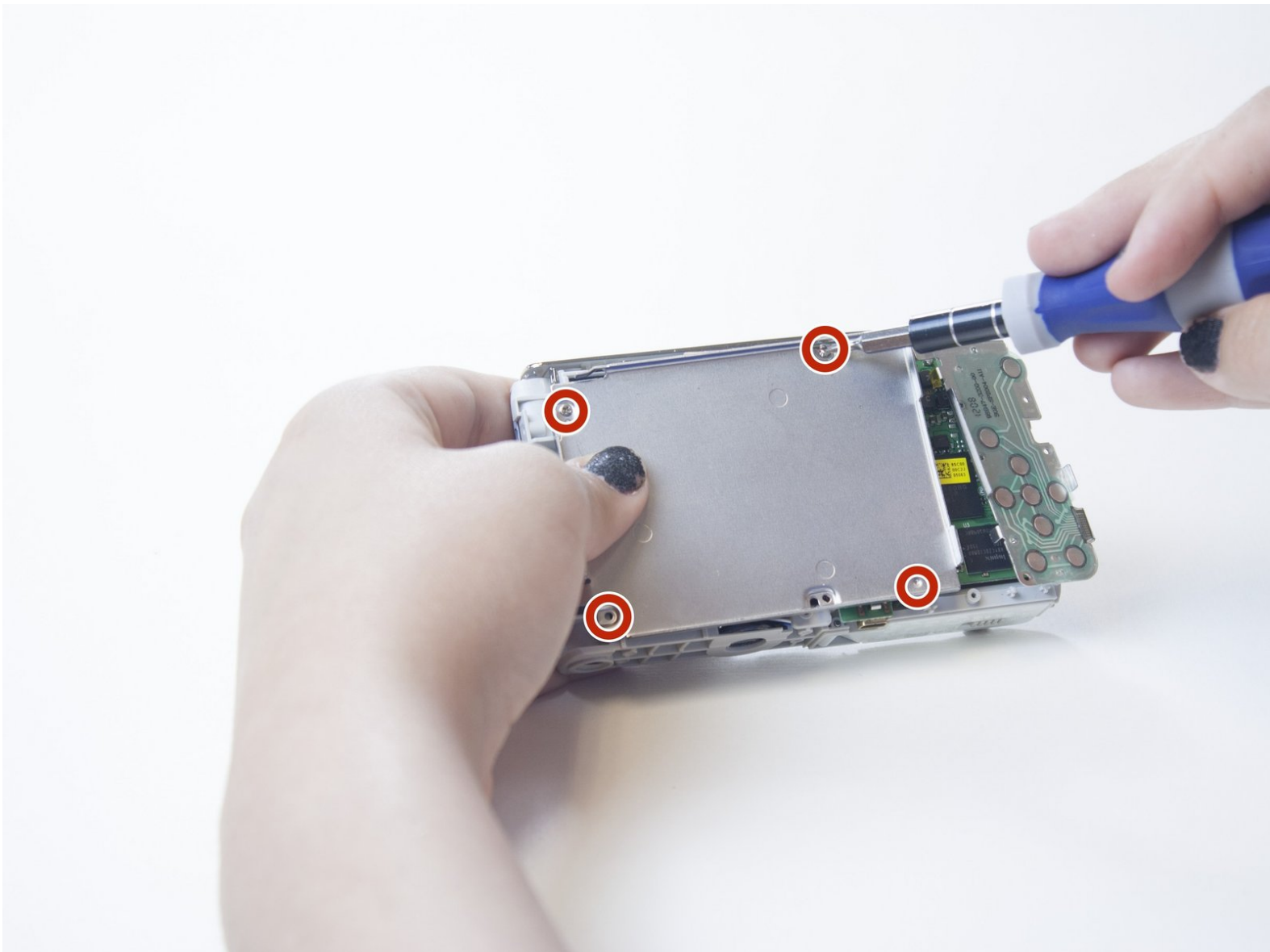




# Olympus VR-350 Lens Box Unit Replacement

This guide is to remove/replace a broken lens box on the Olympus VR-350.

Written By: Brooke





---

# INTRODUCTION

This guide will show you how to remove and replace the lens box unit on the Olympus VR-350.

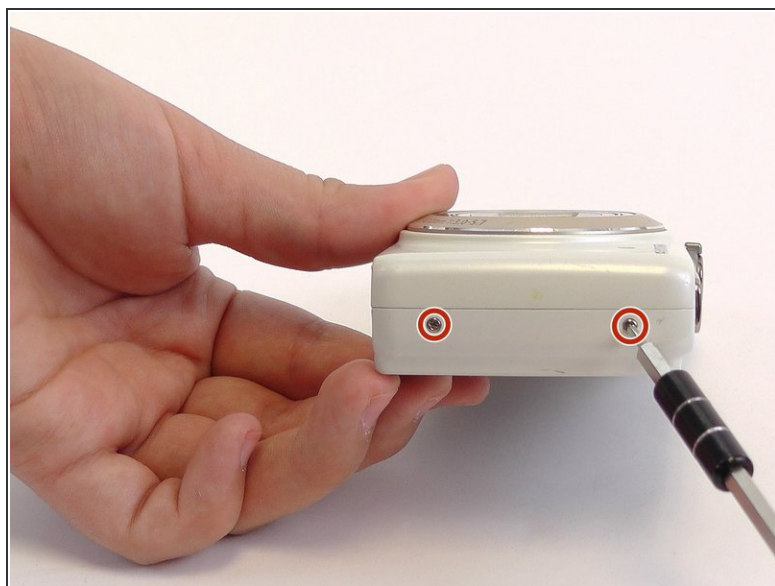
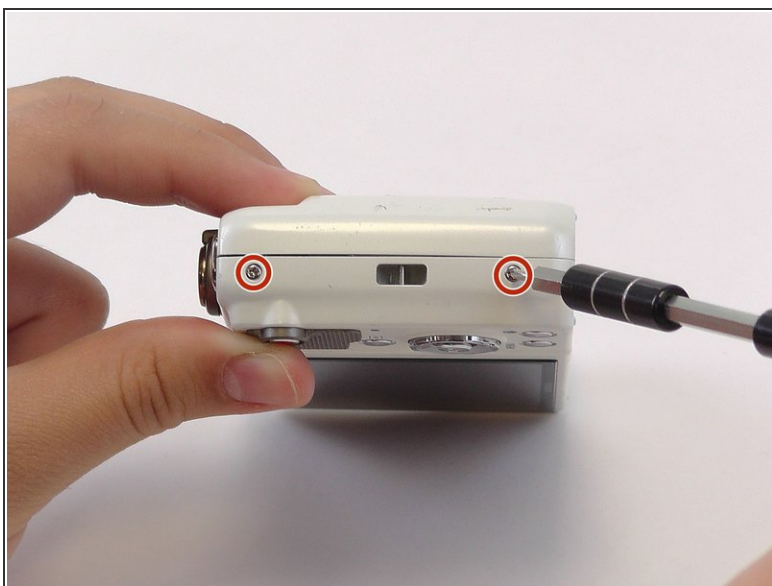
---

## TOOLS:

- [Phillips #000 Screwdriver](#) (1)
  - [iFixit Opening Tools](#) (1)
-

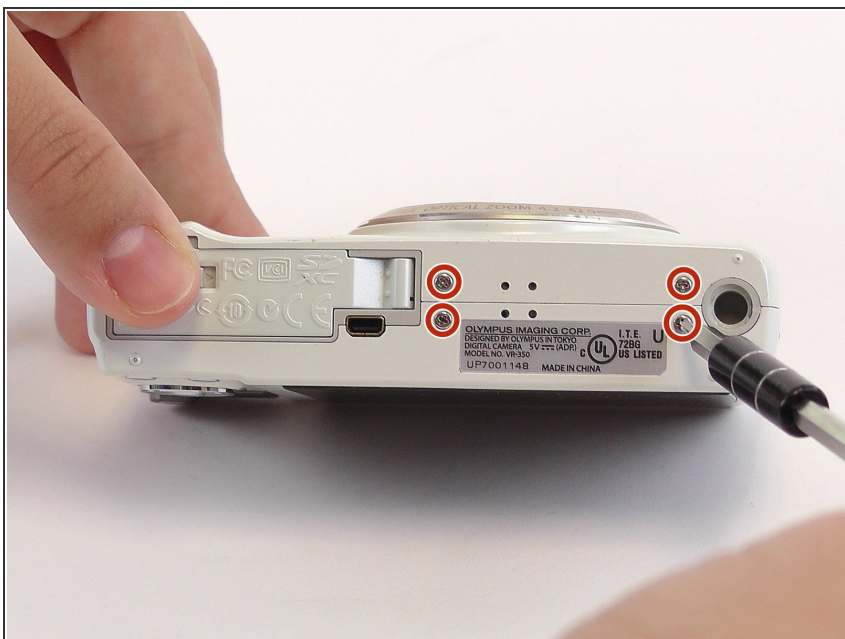


## Step 1 — Front Plate



- Remove the two 4mm screws from each side of the camera with a Phillips PH000 screwdriver.

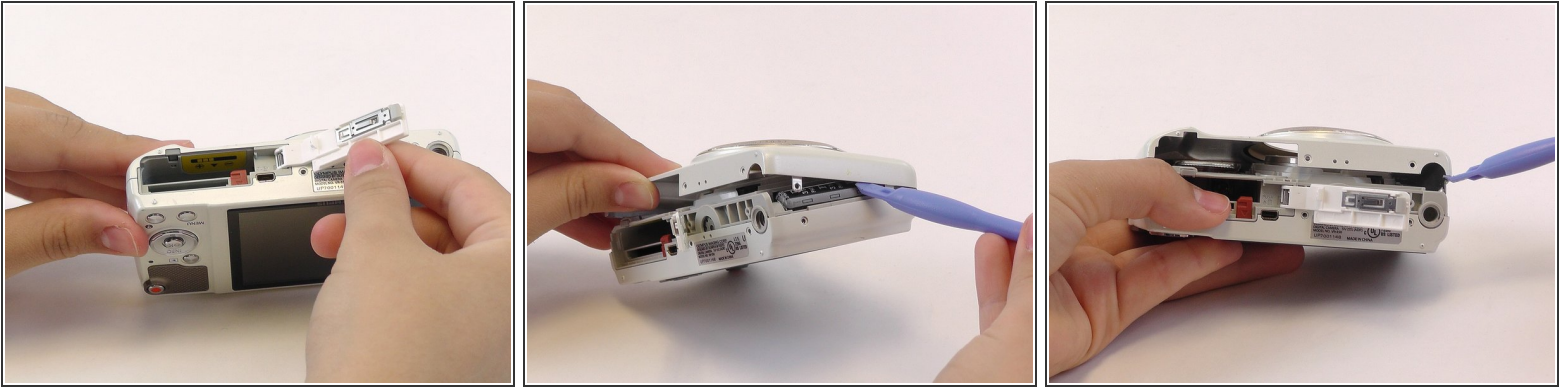
## Step 2



- Remove the four 4mm screws from the bottom of the camera with a Phillips PH000 screwdriver.

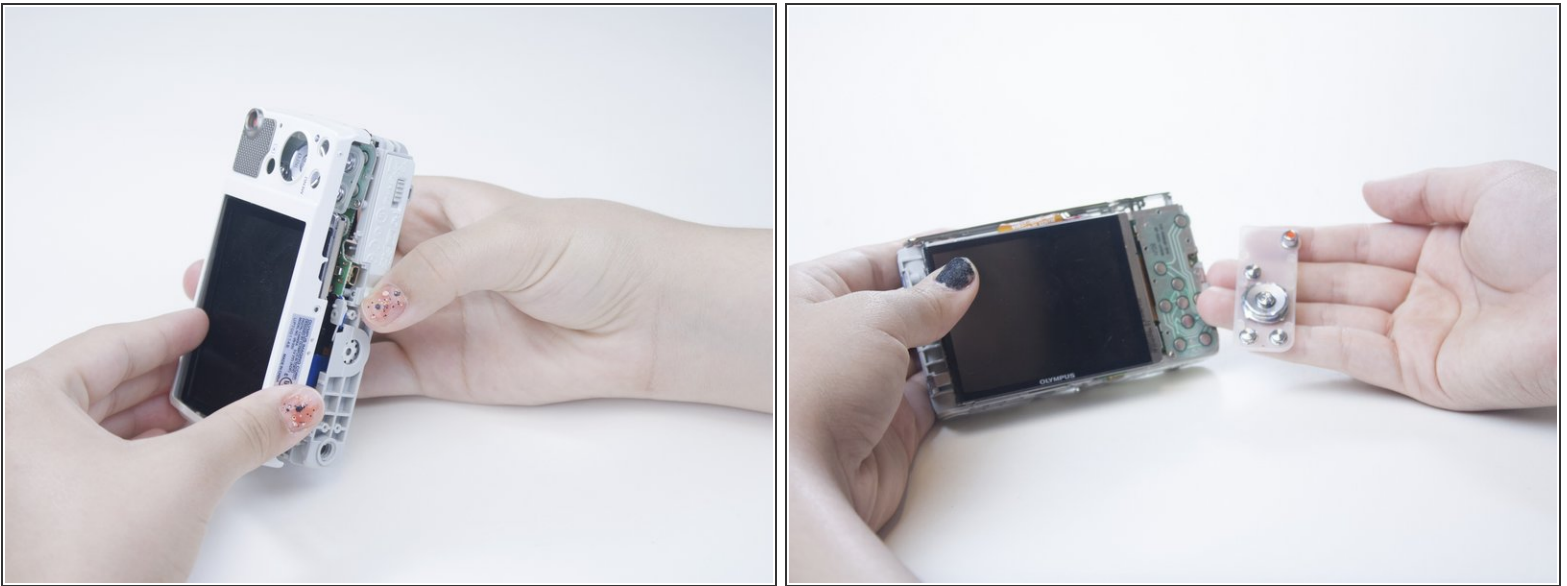


### Step 3



- Use the plastic opening tools and your fingers to pry the front plate from the camera.
- ⓘ You might need to open the battery cover to remove the front plate.

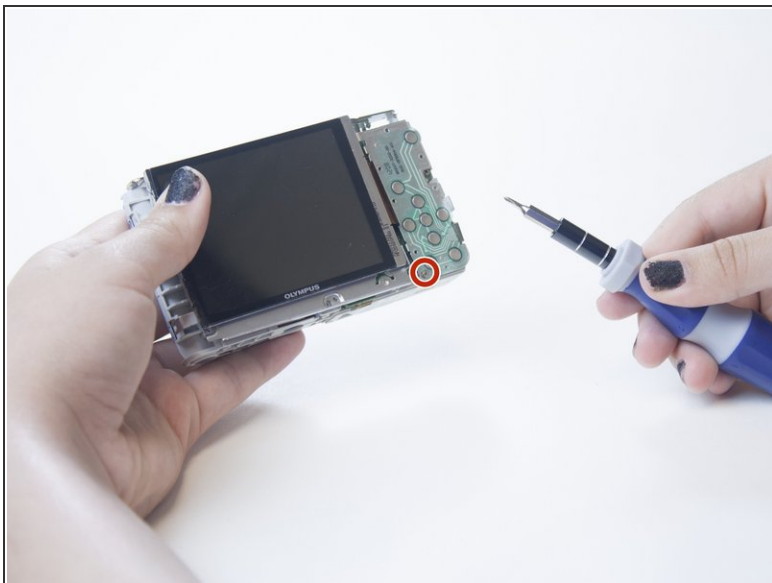
### Step 4 — Back Plate



- Use your fingers to pry open the back cover.
- ⚠ When you remove the back of the camera, the button membrane might fall out. Don't lose this sheet.
- ⚠ The LCD screen is connected to the body of the camera by an orange ribbon cable. Don't pull this ribbon cable out.



## Step 5 — LCD Screen



- Using the Phillips PH000 screwdriver, remove the 4mm screw from the bottom left corner of the button plate located under the button membrane.

## Step 6



- Pull the button pad up to fully reveal the visible ribbon cable.
- ⓘ You might need to bend the button pad out of the way.

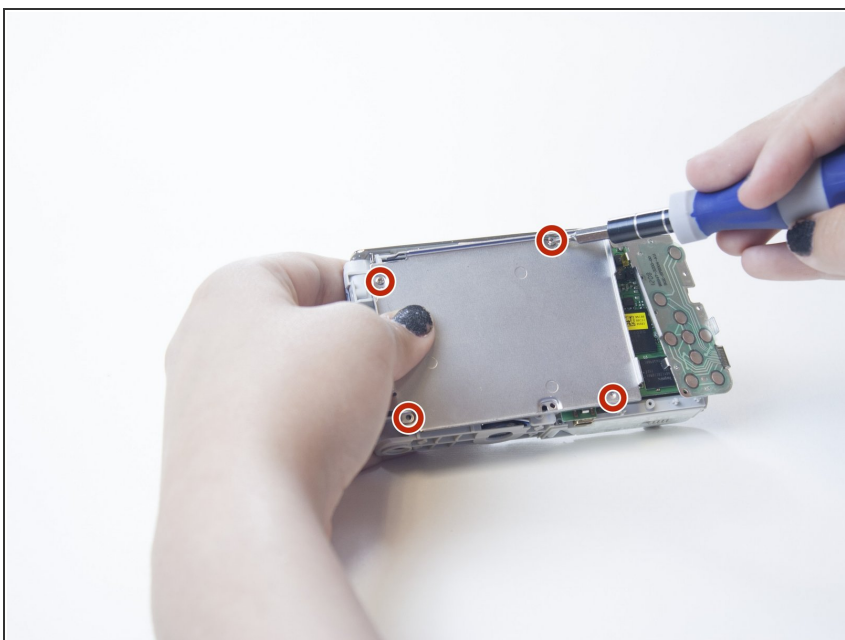


## Step 7



- Pull out the LCD screen and the ribbon cable.
- ⓘ The ribbon cable should be easy to pull out.

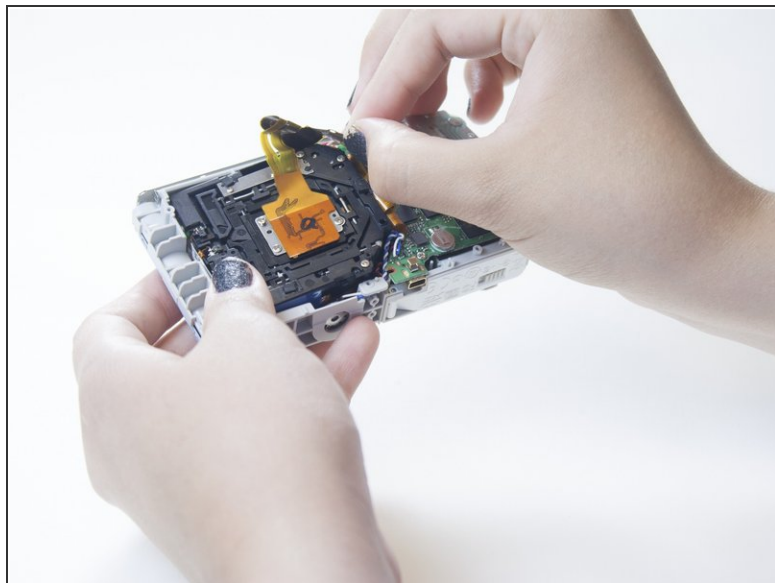
## Step 8 — Lens Box Unit



- Remove the metal plate that was underneath the LCD screen by removing the four 4 mm screws with the Phillips PH000 screwdriver.

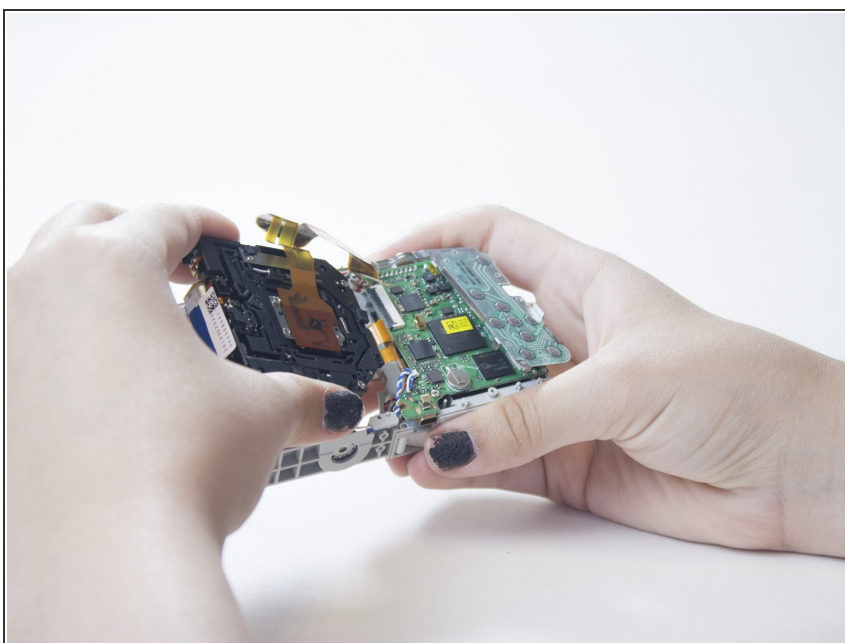


## Step 9



- Remove the orange ribbon cable from the connector on the left side of the motherboard.
- To do this, gently lift up the small grey clasp and pull the cable ribbon.

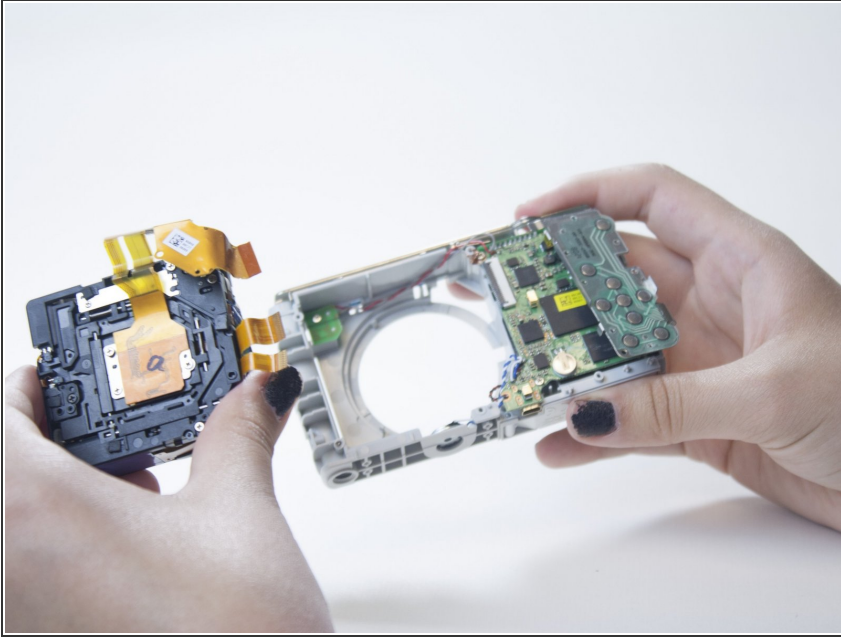
## Step 10



- There are two other small ribbon cables under the motherboard connected to the lens box. Pull them out from the motherboard.
- ⓘ You may need to use force to pull out the ribbon cables.



## Step 11



- Pull the lens box up and out to remove it.

To reassemble your device, follow these instructions in reverse order.