



Samsung Galaxy S Blaze SD Card Slot Cover Replacement

This guide will show how to properly replace...

Written By: Rene Bolanos



INTRODUCTION

This guide will show how to properly replace the SD card slot cover on a Samsung Galaxy S Blaze 4G. The replacement of the SD card slot cover is an easy process with no surprises. You will need to be careful while taking out the screws, the screws will damage easily.

TOOLS:

[Phillips #00 Screwdriver](#) (1)

[iFixit Opening Tool](#) (1)

Step 1 — SD Card Slot Cover



- ① Make sure the device is powered off and not plugged into a power source.
- Remove the back plate to reveal the battery.

Step 2



- Use a spudger or your fingers to remove the battery from the phone.

Step 3



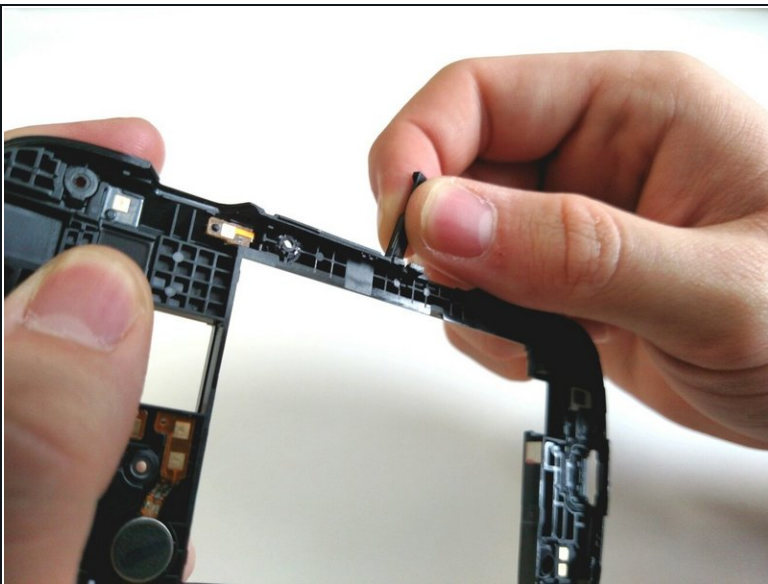
- Use a Phillips #00 screwdriver to remove the **eight** 4 mm screws from the device frame.

Step 4



- Use the *blue* plastic opening tool to gently pry the frame off the phone.
 - Work around the phone with the *blue* plastic opening tool until the frame is off.
- i** You may need to use a bit of force to pry off the frame.

Step 5



- i** The SD cover is held in place on the frame by a small tab.
- Unhook the tab of the SD card slot cover from the frame of the device.
 - This is what the tab of the SD card slot cover looks like.

To reassemble your device, follow these instructions in reverse order.

If there is something wrong with your device, try this: [Samsung Galaxy S Blaze 4G Troubleshooting](#)