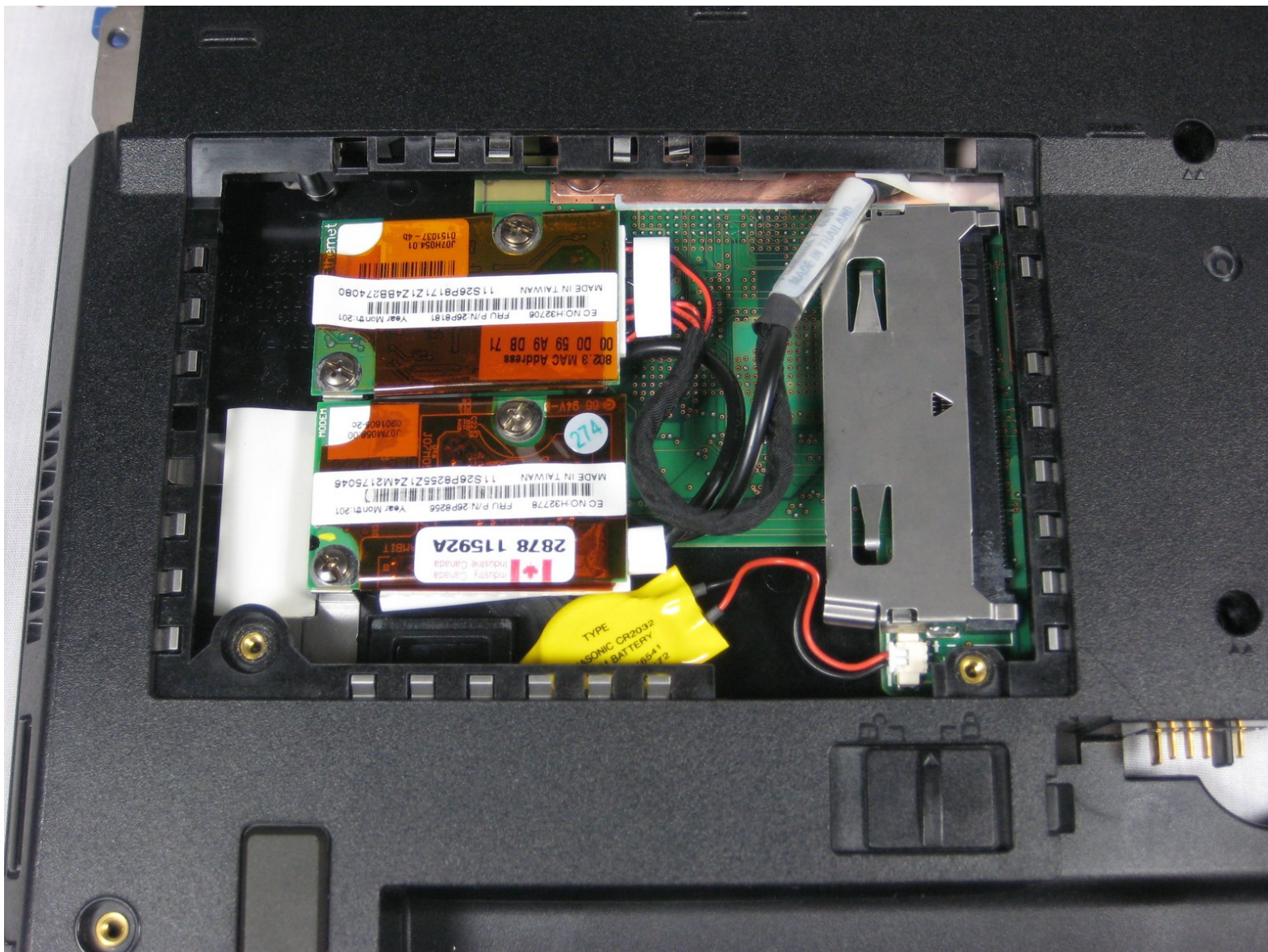




# Disassembling IBM ThinkPad A30 Modem and Ethernet Cards

Here we will show the steps to take out the ThinkPad's modem and ethernet cards.

Written By: Alan

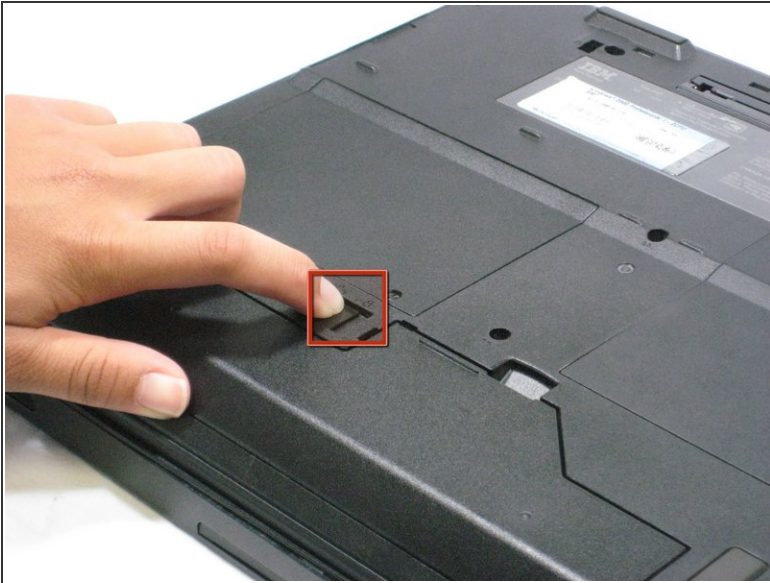




## TOOLS:

- [Phillips #1 Screwdriver](#) (1)
-

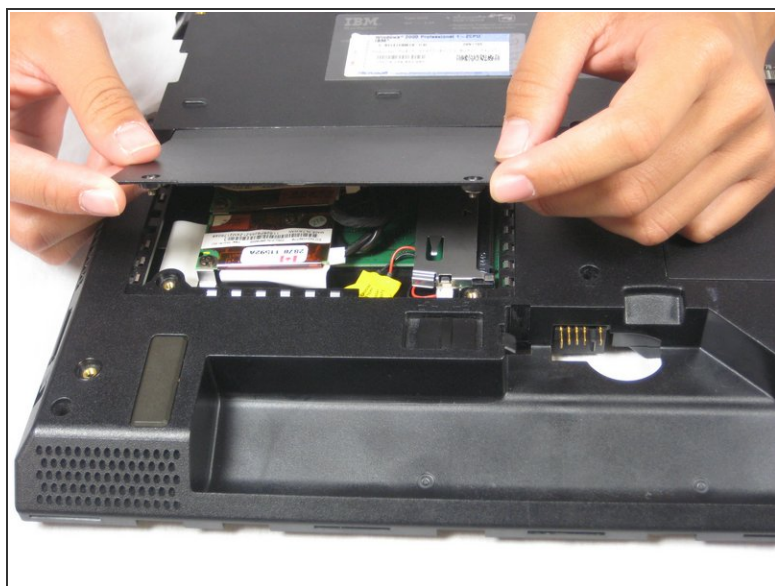
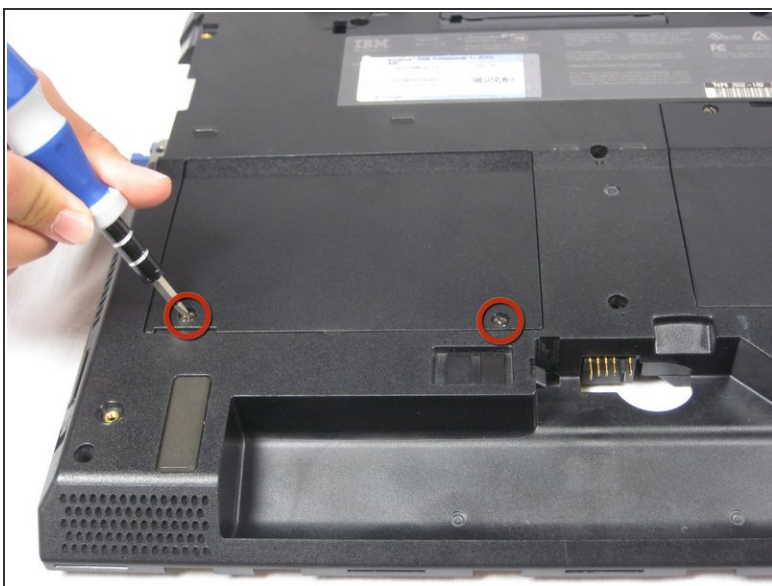
## Step 1 — Battery



- ① Flip the ThinkPad over so that it is upside down.
- Slide the highlighted tab to the left.
- With your finger on the tab, remove the battery by lifting it upwards away from the laptop.

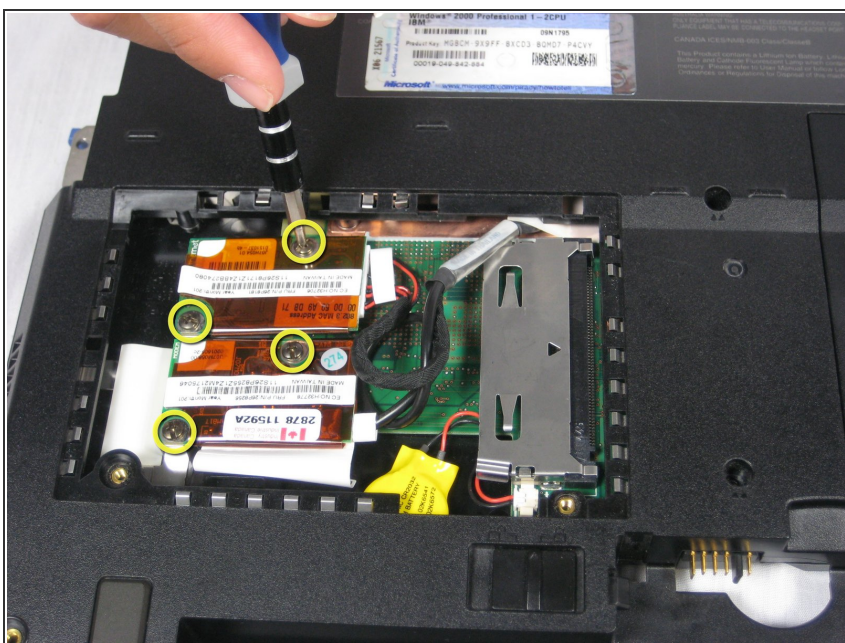


## Step 2 — Modem and Ethernet Cards



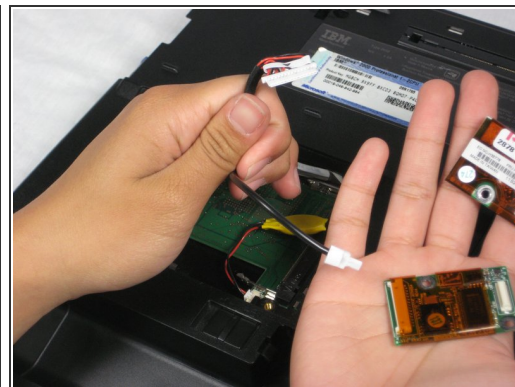
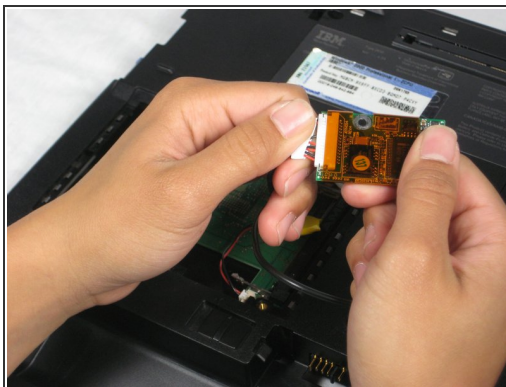
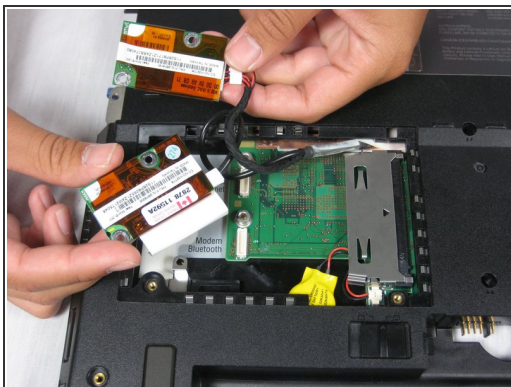
- Remove the two 5.3mm cover screws.
- Gently lift the cover.


## Step 3



- Remove the four 9.1mm screws attached to the ethernet and modem cards.

## Step 4



 When lifting the cards, be careful not to rip out the cables!

- Gently lift the modem and ethernet cards.
- Remove the cables that attach the modem and ethernet cards.

To reassemble your device, follow these instructions in reverse order.