



Tritton Kunai Right Speaker Replacement

This guide describes how to replace the TRITTON Kunai's right speaker.

Written By: Elias El Tom



INTRODUCTION

How to replace the TRITTON Kunai's right speaker.



TOOLS:

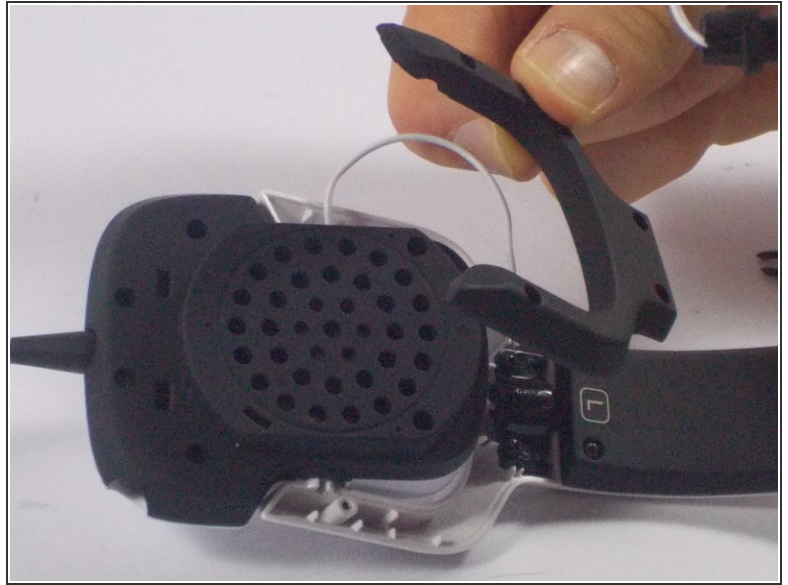
- [Phillips #00 Screwdriver](#) (1)
 - [Tweezers](#) (1)
-

Step 1 — Right Speaker



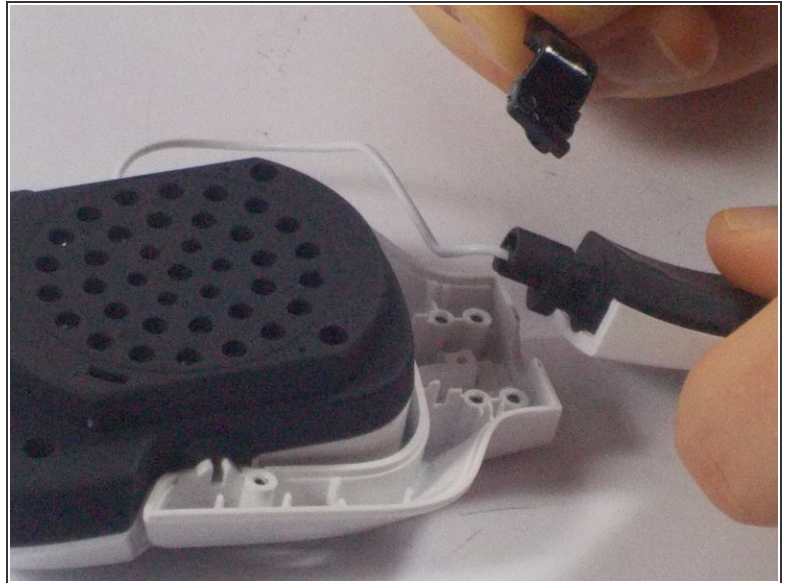
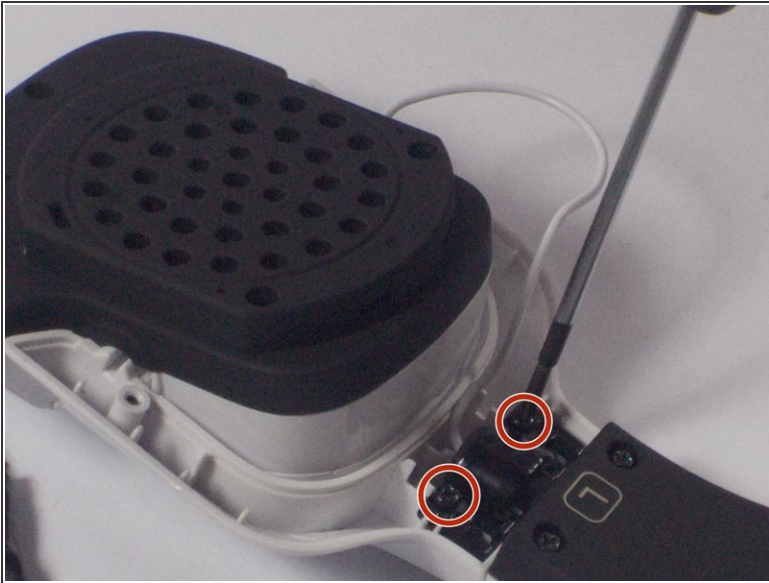
- Firmly grasp the black ear cushion with one hand and the white speaker frame with the other hand.
- Forcibly pull the ear cushion and speaker frame in opposite directions, until the right ear cushion separates from the right ear frame.

Step 2



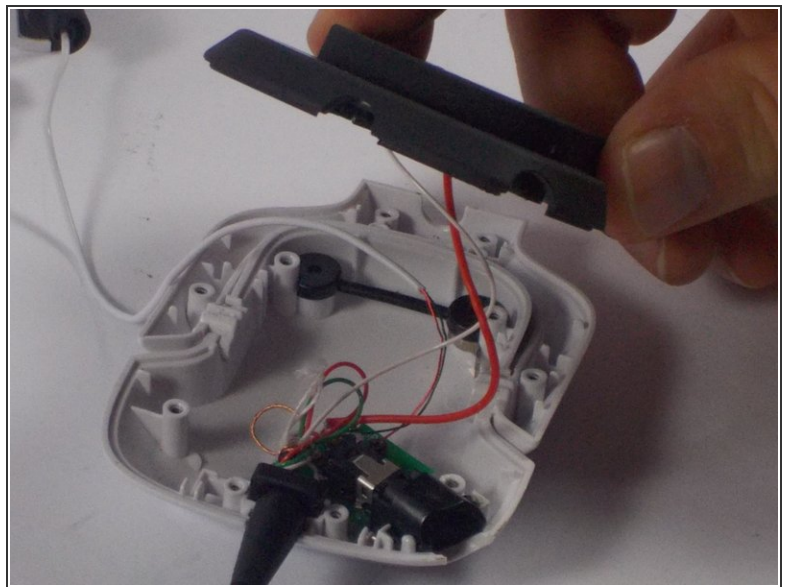
- Remove the two 9 mm screws indicated in red with a PH00 screwdriver.
- Remove the two 7 mm screws indicated in orange with a PH00 screwdriver.
- Separate the black horseshoe shaped frame from the right speaker frame.

Step 3



- Remove the two 7 mm screws indicated in red using a PH00 screwdriver.
- Separate the black bracket and then the rail adjustment from the right speaker frame.

Step 4



- Remove the five 7 mm screws indicated in red using a PH00 screwdriver.
- Separate the black speaker console from the right speaker frame.

Step 5



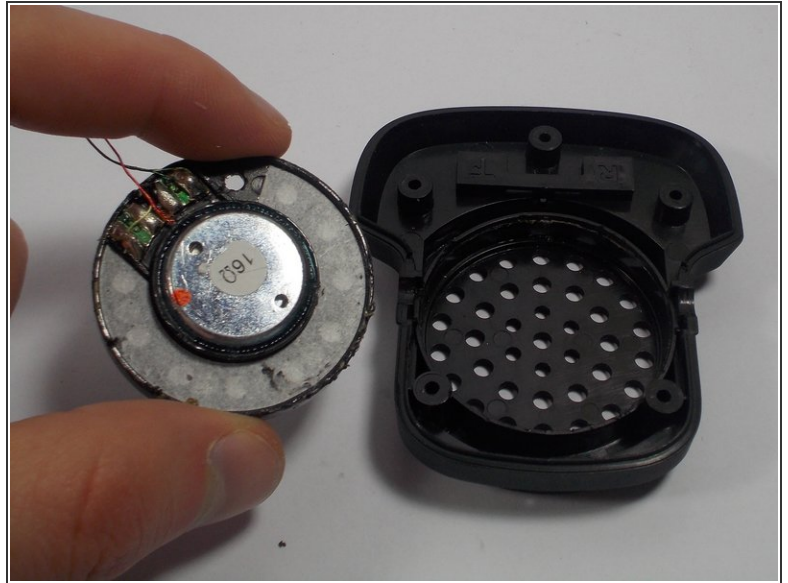
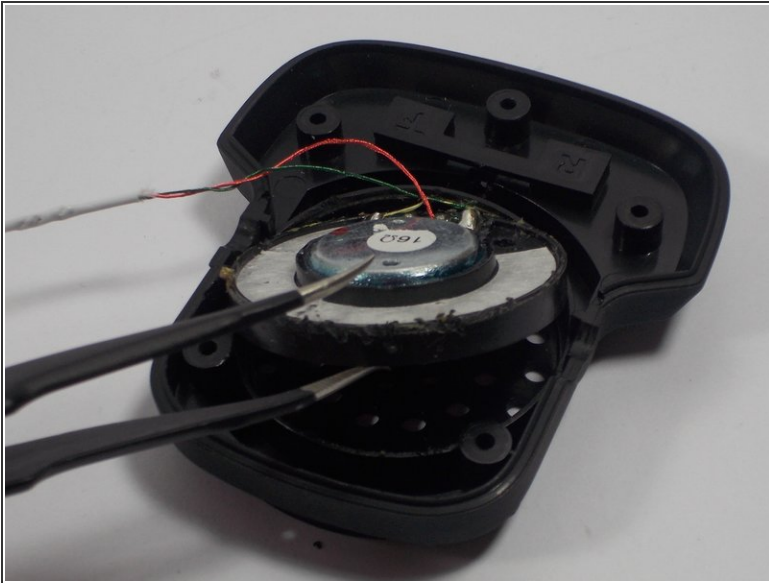
- Disconnect the red and green wires from the 16 Ohm speaker.

Step 6



- Squeeze the tip of the tweezers into the gap between the speaker and the speaker case.
- Remove the glue holding the speaker in place by scraping the glue with the tip of the tweezers.

Step 7



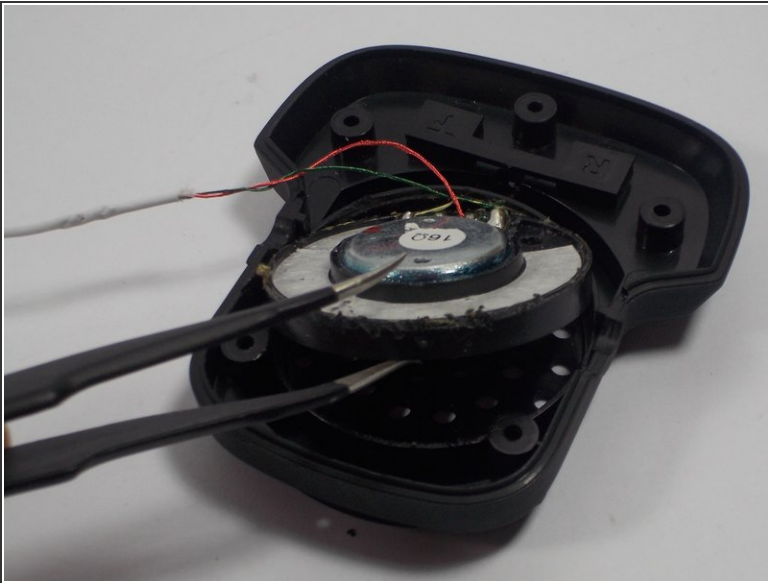
- Remove the speaker from its circular shaped slot.

Step 8



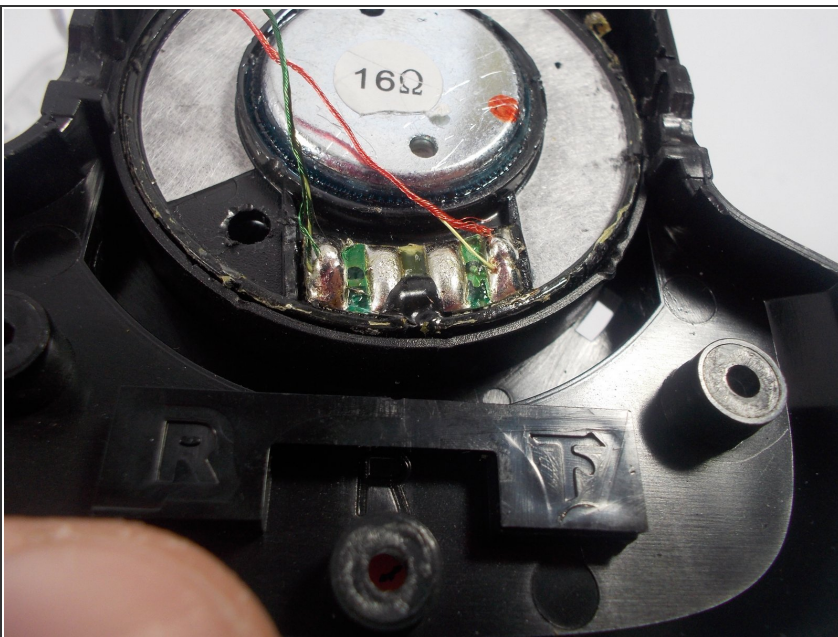
- Apply glue to the sides of your new 16 Ohm speaker.

Step 9



- Insert your new speaker into the circular shaped slot located on the speaker cover.


Step 10



- Solder the wires you disconnected from the old speaker to the new speaker. The red wire is to be

soldered to the far right terminal,
while the green wire is to be
soldered to the far left terminal.

 [Here is iFixit's soldering guide.](#)

 Solder with caution and try not to
burn yourself.

To reassemble your device, follow steps 1 through 4 in reverse order.