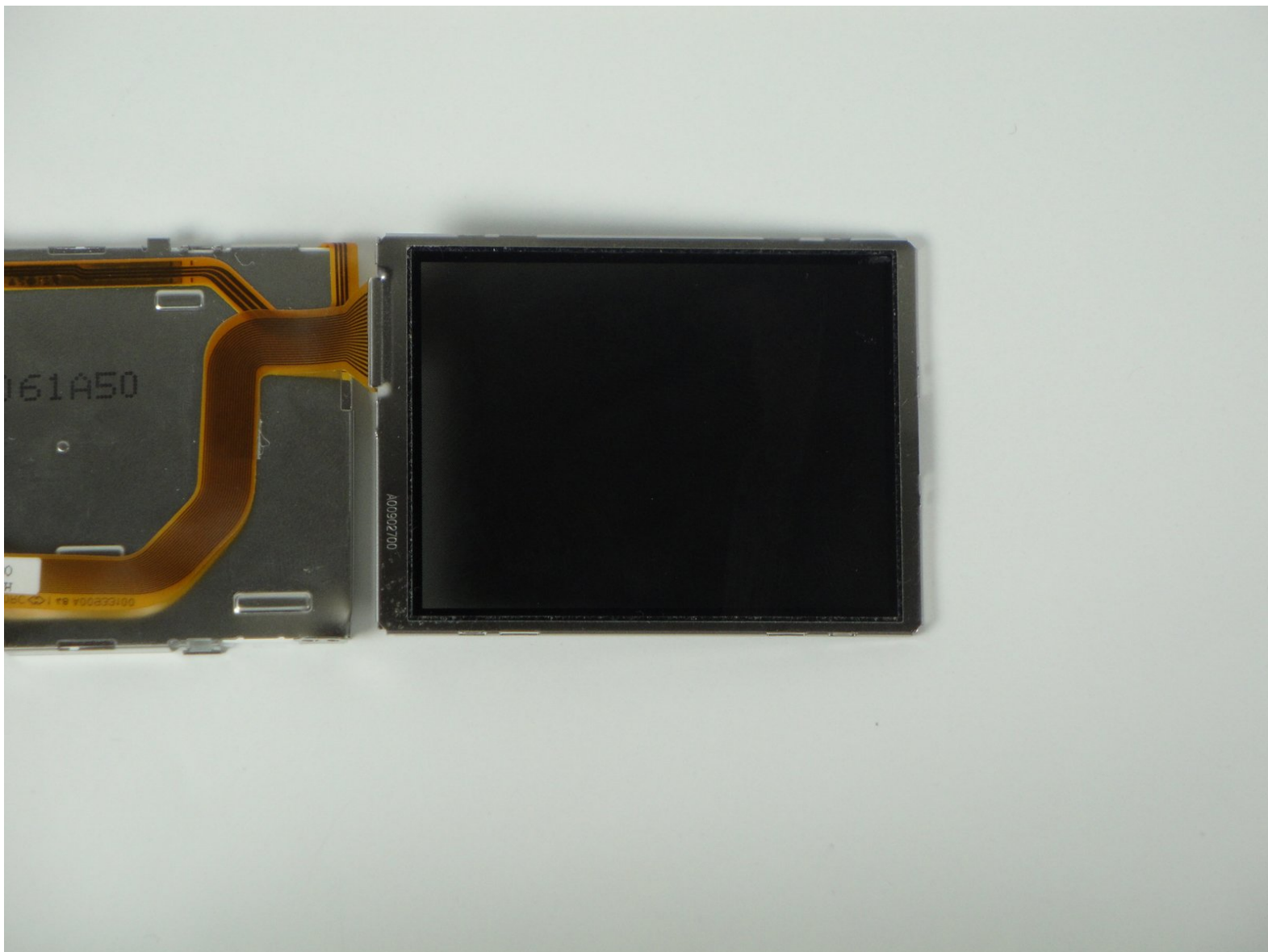




# Disassembling Canon PowerShot SD800 IS LCD Display

Separate the LCD Display and back light.

Written By: Jeremy Rabaino



---

## INTRODUCTION

Remove the back cover before removing LCD display.

---

### TOOLS:

- [Phillips #00 Screwdriver](#) (1)
-

## Step 1 — Back Cover



- Remove one 2.25mm screw on the bottom.

## Step 2



- Remove two 2.25mm screws on the right side looking from the front.

### Step 3



- Remove one 4.7mm screw on the side with the AV output.

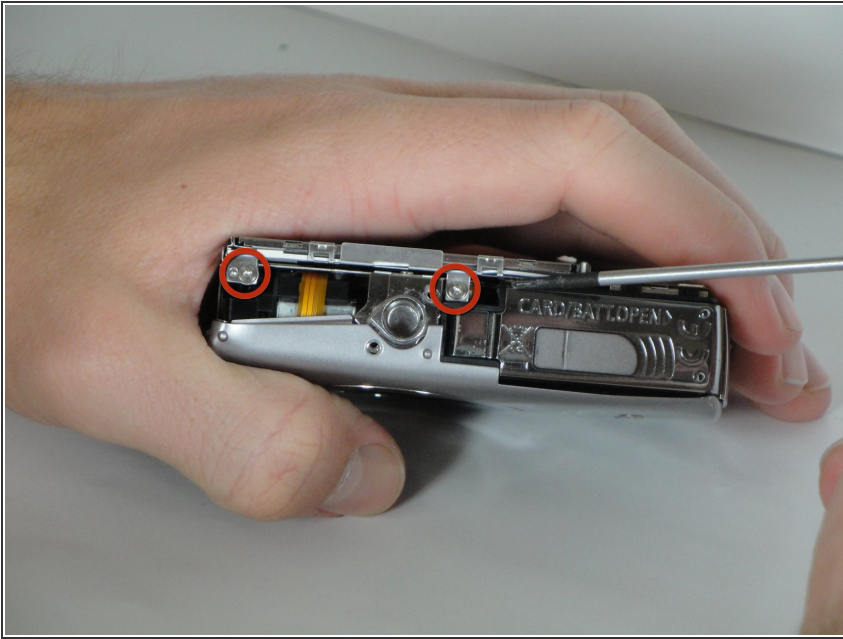
### Step 4



- Pull off the back cover.
- ⓘ The back cover tends to stick in the top corner (near the mode dial) due to a metal clip. Jiggle the cover side to side as you pull it out.

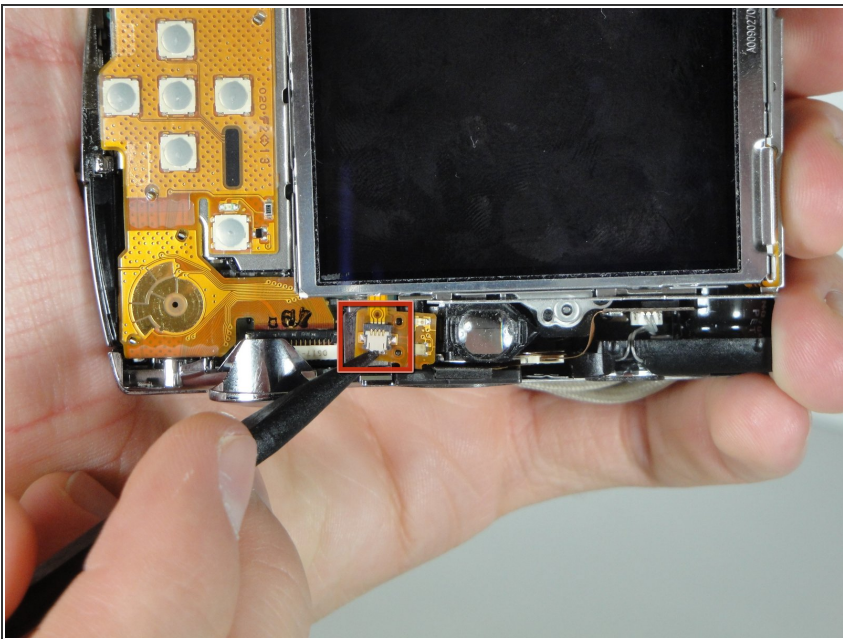


## Step 5 — LCD Assembly



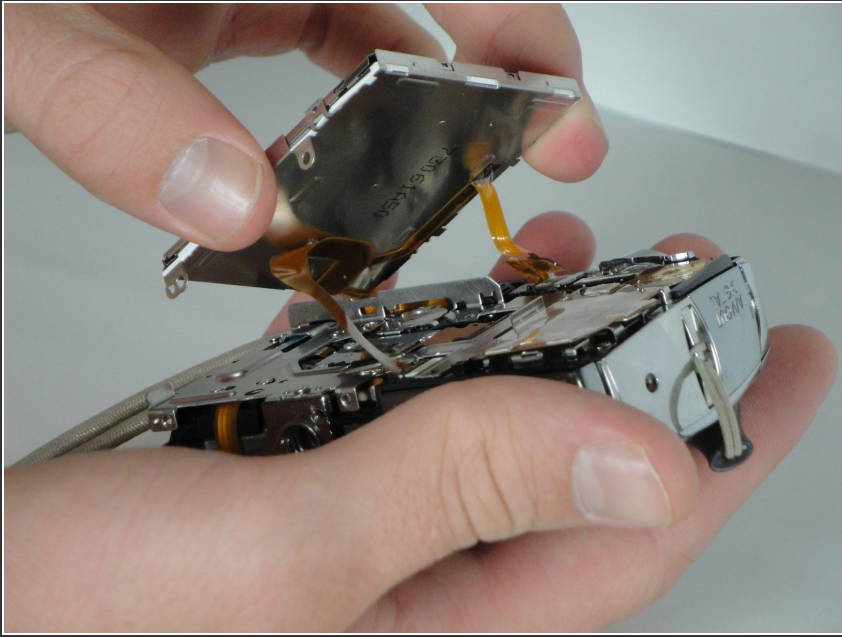
- Remove 2 2.4mm screws on bottom.

## Step 6



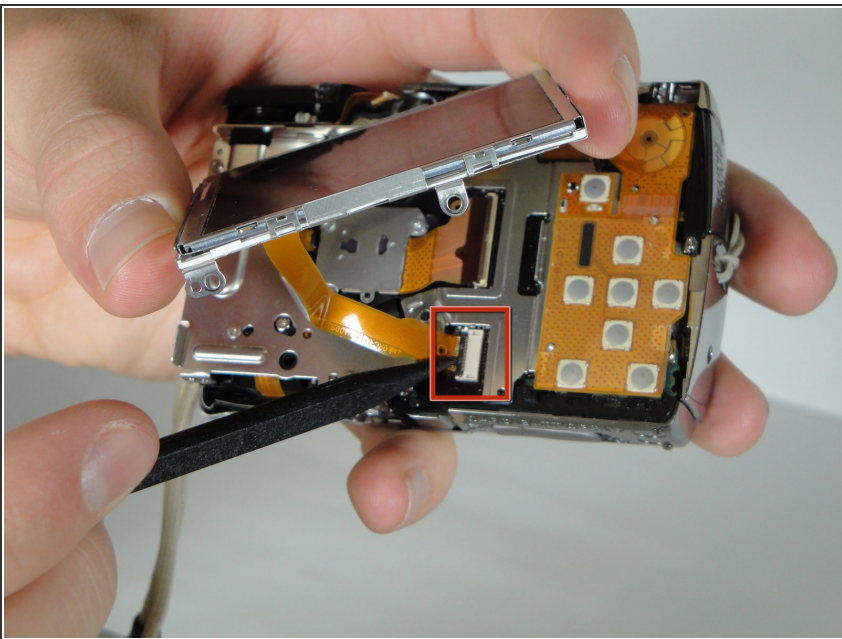
- Follow the small data cable to where it connects to the camera.
  - Lift the back white portion to unlock the cable.
  - The cable should easily slide out.
- ⚠ The connector is very fragile. Use caution when lifting the lock.

## Step 7



- Gently lift LCD display off.
- ⚠ There will be two data cables still attached to the camera. Do not break them.
- ⓘ There may be a loose strip of metal along the inner side of the LCD display for a secure fit.

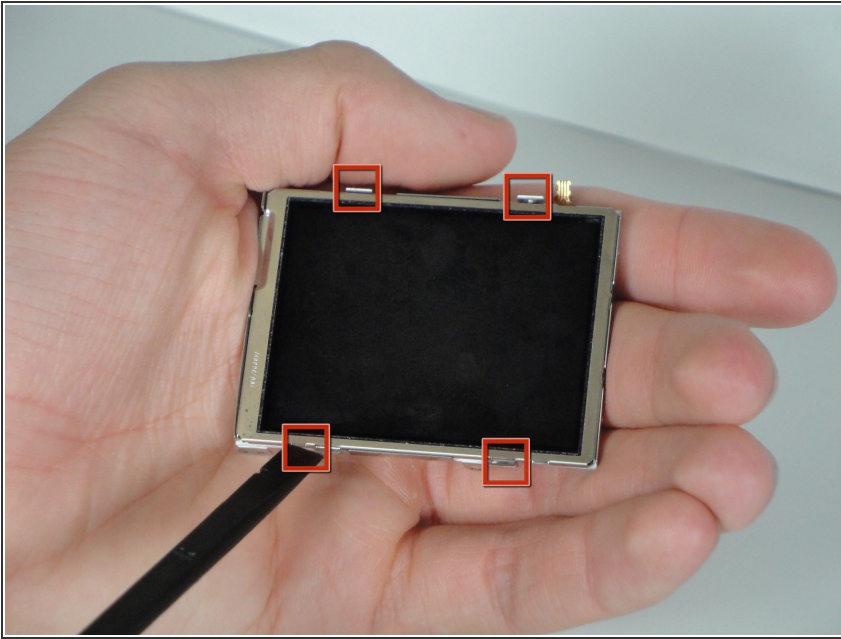
## Step 8



- Follow the larger cable to where it connects to the camera.
- Lift the front black portion of the connector to unlock the data cable.
- The cable should easily slide out.
- ⚠ The connector is very fragile. Use caution when lifting the lock.

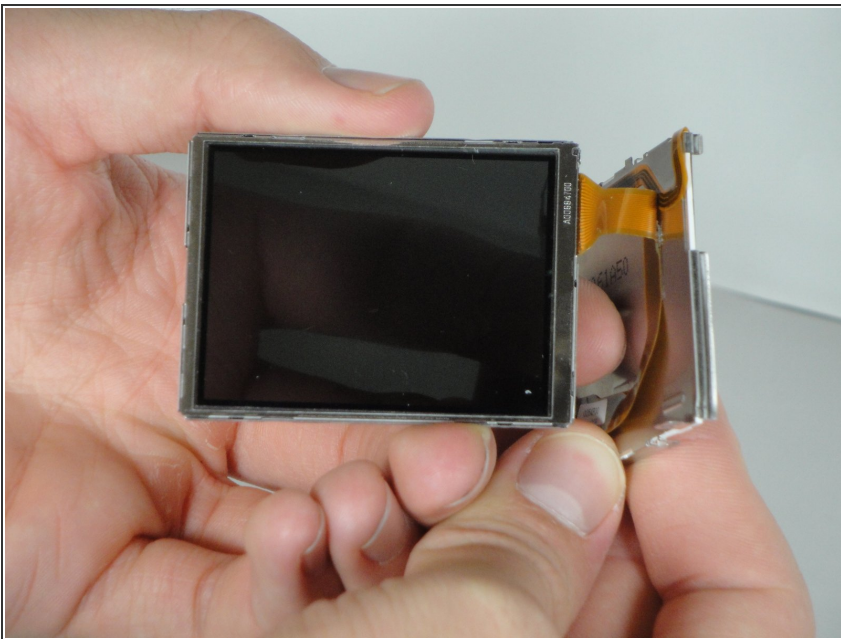


## Step 9 — LCD Display



- Pry the LCD display out from the four metal clamps.

## Step 10



- To remove the LCD, peel the larger data cable off from the frame.
- ⓘ The LCD is glued by its data cable to the back of the LCD frame.

To reassemble your device, follow these instructions in reverse order.