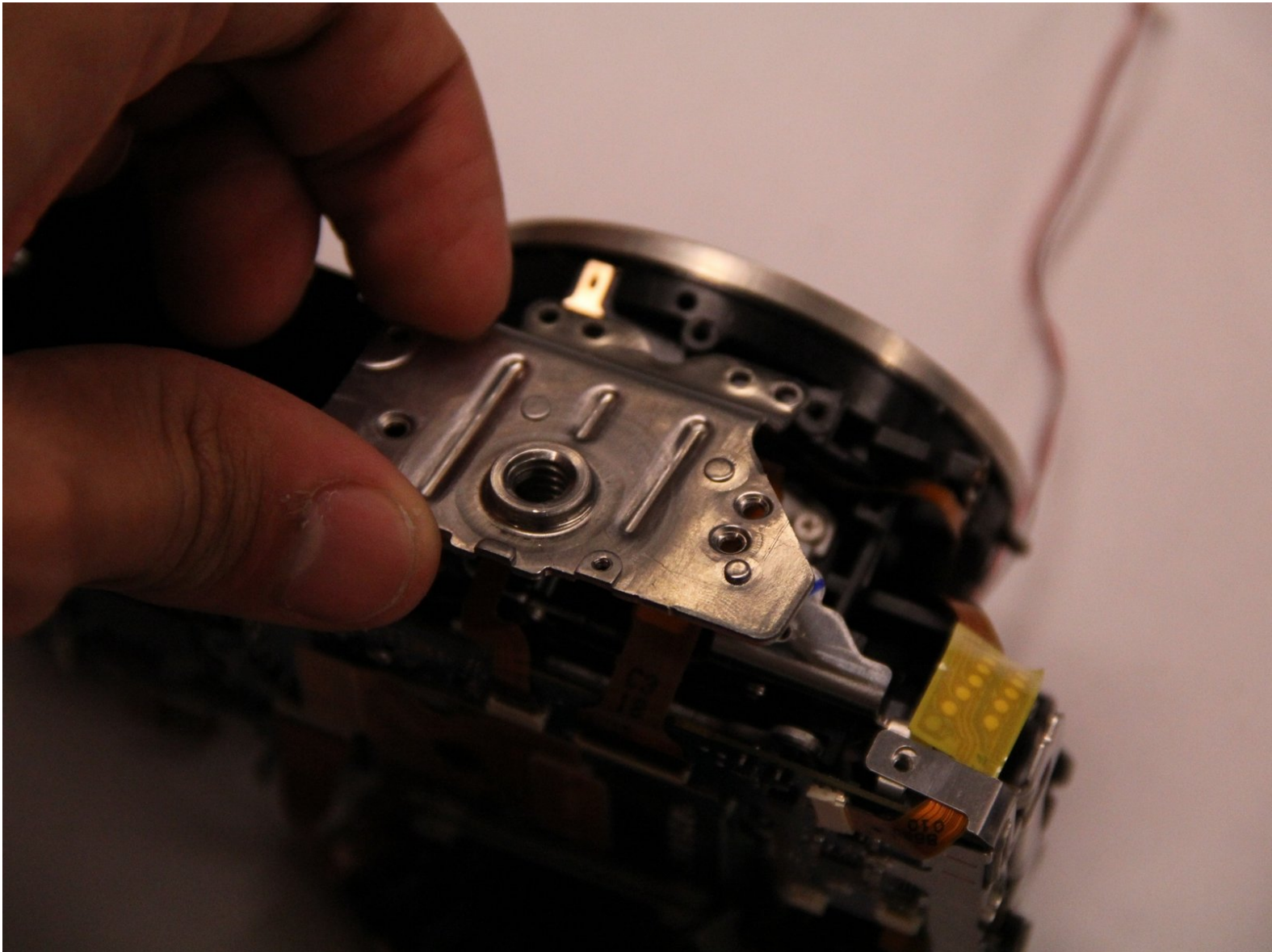




# Canon EOS Rebel T2i Tripod Mount Replacement

This guide will show you how to replace the tripod mount

Written By: Jacob Jaskolka





## TOOLS:

- [Essential Electronics Toolkit](#) (1)
-

## Step 1 — Tripod Mount



- Turn off camera using the power button on the top of the camera.
- On the bottom of the camera, open the battery door and remove the battery.

## Step 2



- Remove the 7 screws from the bottom of the camera using a Phillips screwdriver



### Step 3



- Remove the two screws on the right side of the camera.

### Step 4



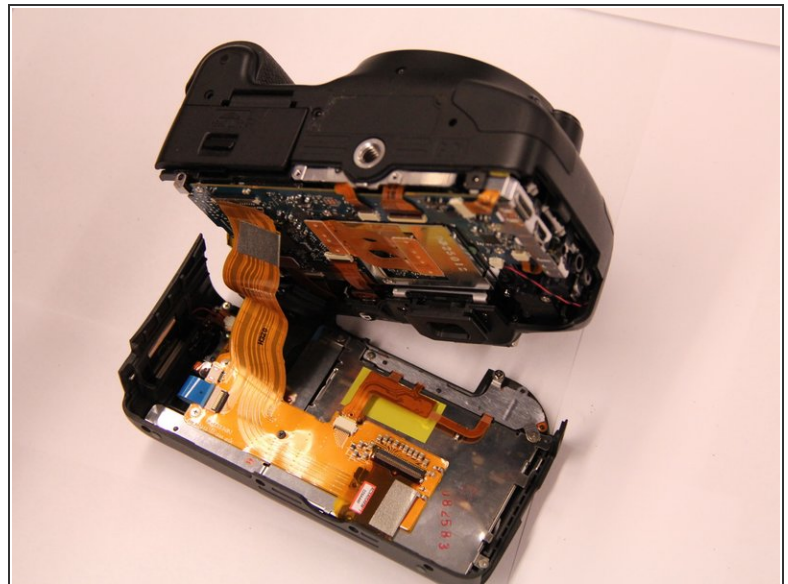
- Remove 1 screw from the left side of the camera.
- Inside the rubber door, remove the two silver screws.

## Step 5



- Remove the two black screws on the front of the camera just above the lens mounting ring.
- **NOTE:** Do not remove any of the silver screws on the lens mount ring. This could cause problems with auto focussing features.

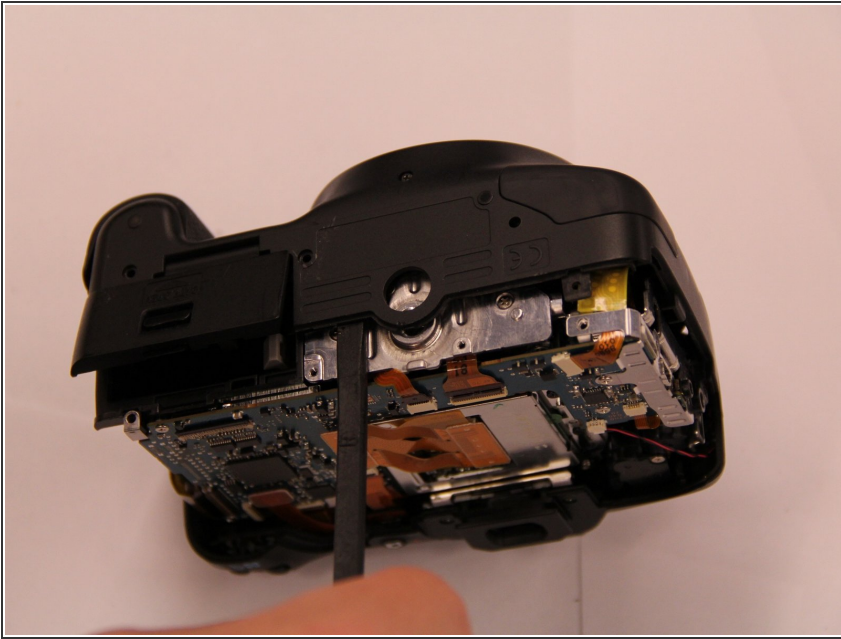
## Step 6



- Using the spudger and plastic opening tool, pry the back of the camera loose.

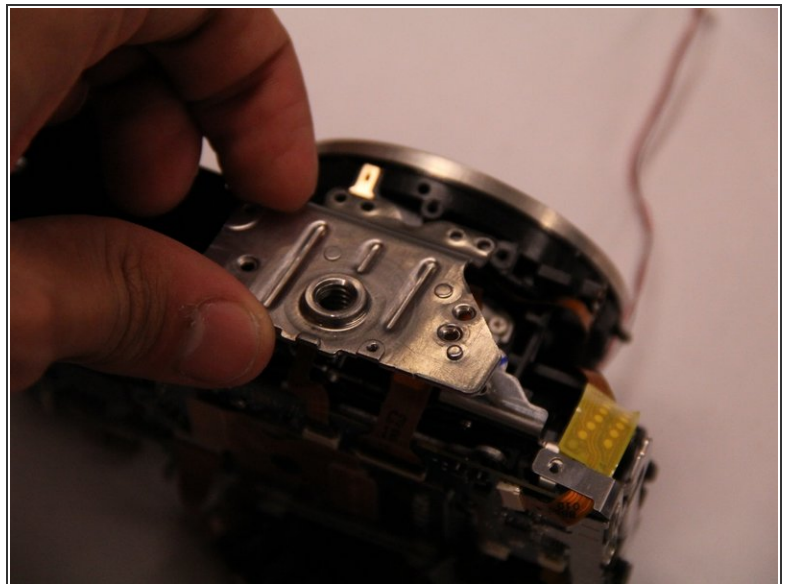
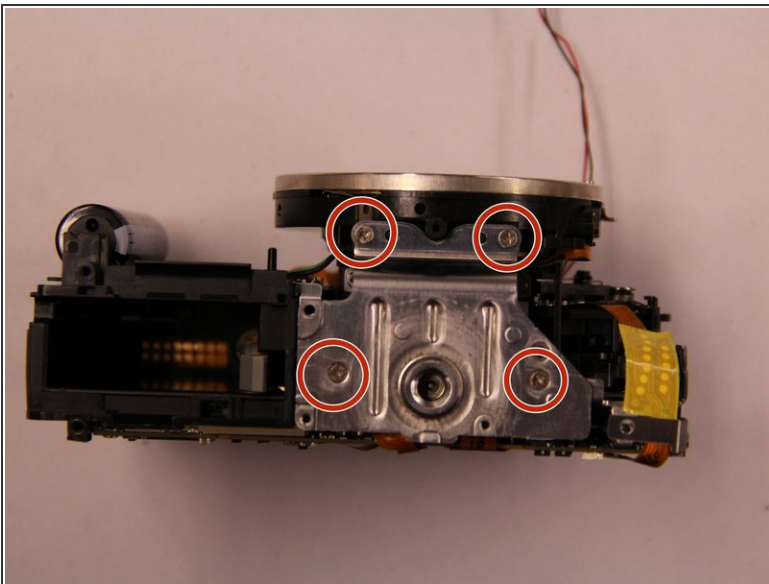


## Step 7



- Using the spudger and plastic opening tool, pry the bottom of the front panel of the camera over the tripod mount.

## Step 8



- The screws holding the tripod mount are now exposed.
- Remove the screws securing the tripod mount
- With the screws removed, the tripod mount can now be easily pulled free.

To reassemble your device, follow these instructions in reverse order.