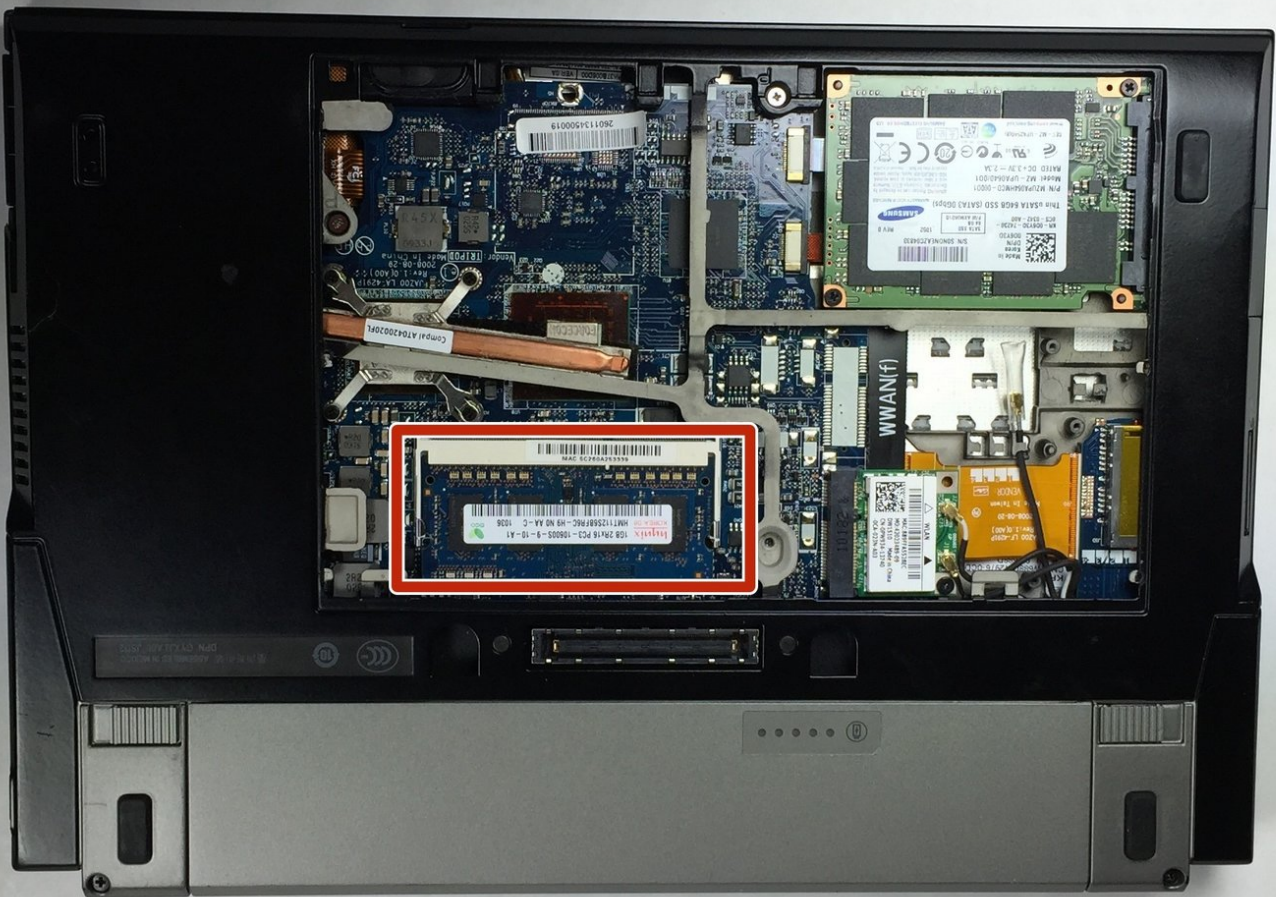




Dell Latitude E4200 RAM Replacement

This guide will provide the instruction for accessing and replacing the RAM of the laptop.

Written By: Chao Wei





TOOLS:

- [Phillips #0 Screwdriver](#) (1)
-

Step 1 — Back Panel



- Use PH0 screwdriver to unscrew the 4.49x7.88 mm screw in the middle of the back panel.

Step 2



- Place thumbs flat on the front side of the back panel (the side to open the laptop).
- Push panel upwards sliding it out of the locked position.
- Lift panel out of socket.

Step 3



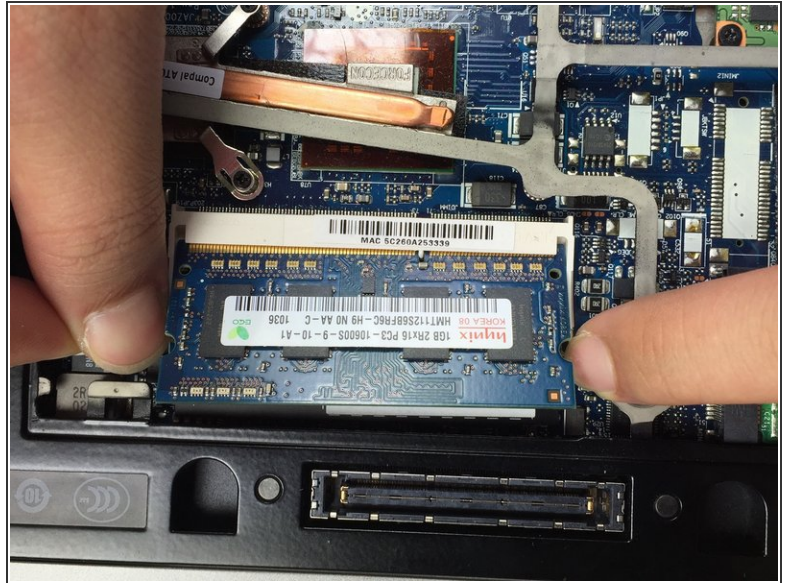
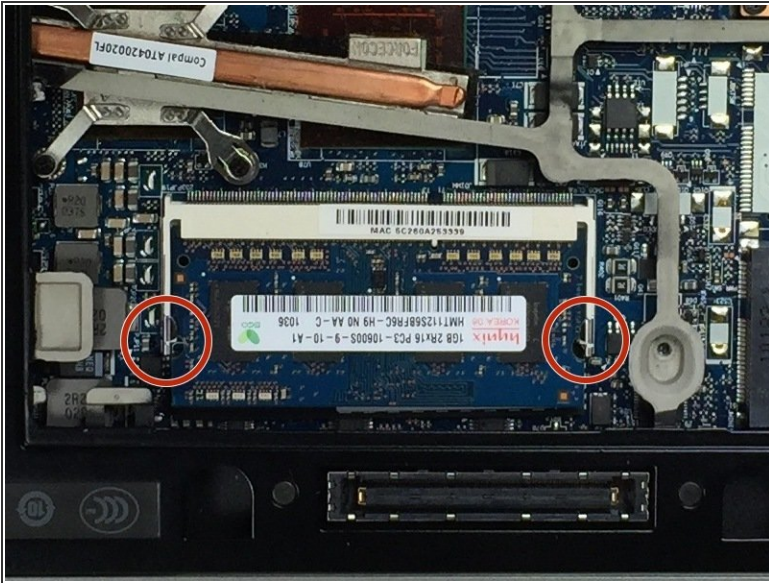
- Remove panel and screw from the device. This opens up the main board of the device.

Step 4 — Remove the back panel



- Once you removed the back panel, the RAM will easily be located.
- ⚠ Be sure to remove the battery first

Step 5 — Take out the RAM



- Place your thumbs on each side of the RAM tabs.
- Gently push outward on the tabs to release the RAM. This will allow you to remove the RAM completely from your device.
- ⓘ The RAM should "bump up" after you push away the tabs.

Step 6



- Gently grab each side of the RAM and remove it from the device.
- ⚠ Please do not touch connection side of the RAM (shown in orange) with fingers. It might causes possible corrosion to the connection.

To reassemble your device, follow these instructions in reverse order.