



# Sega CD CD Tray Replacement

This guide will show how to remove the CD tray from your console.

Written By: sskylin





## TOOLS:

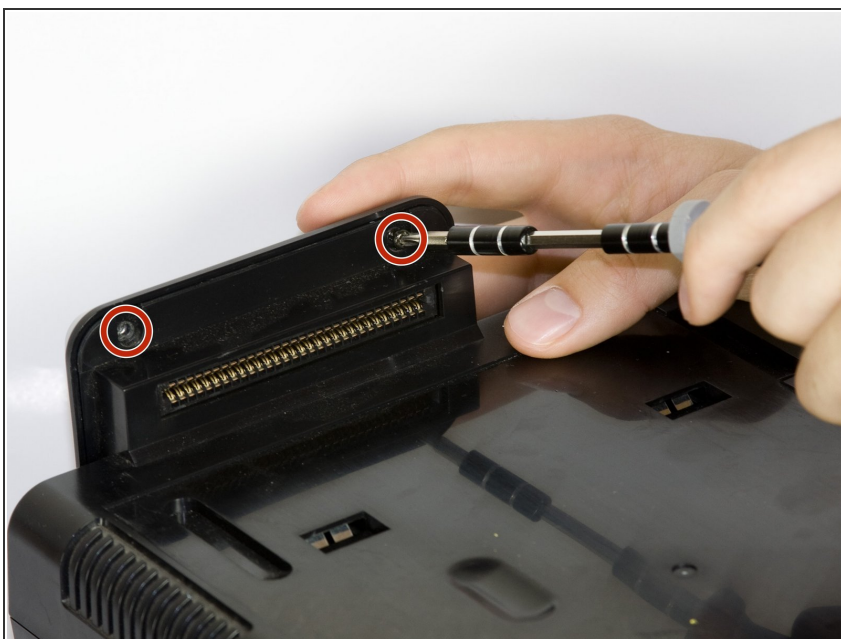
- [Phillips #00 Screwdriver](#) (1)
  - [Spudger](#) (1)
-

## Step 1 — Sega CD Plastic Housing Removal



- Using a Phillips head screwdriver remove six screws from the bottom of the console.
- The six screws are marked.

## Step 2



- Remove the two screws that attach the Genesis' connector to the rest of the console.
- The two screws are marked in the diagram.



### Step 3



- Slide the lock tab to the left to separate the halves of the console.

### Step 4



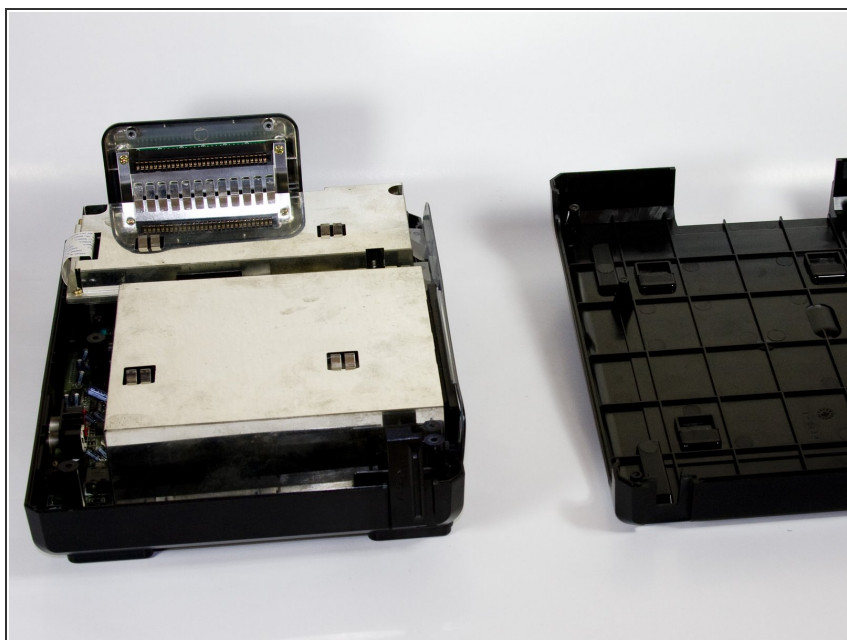
- Lift from the left side to remove the top of the case.

## Step 5



- Using the spudger, pry the cover off of the Genesis attachment.

## Step 6



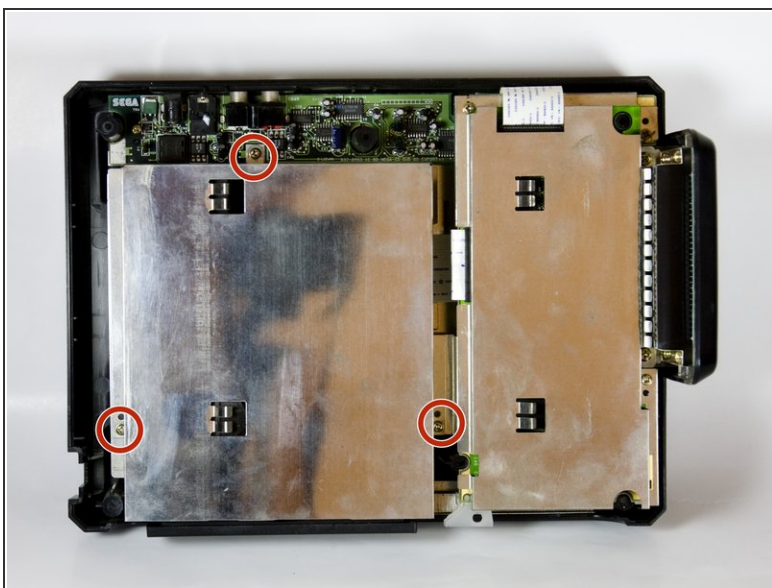
- Lift the top of the case to remove the cover.

## Step 7



- Remove the faceplate by pulling it up, then out.

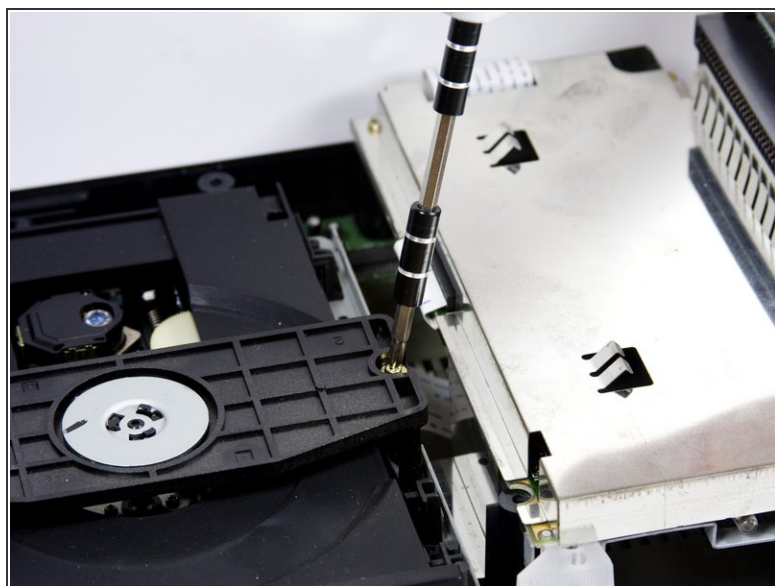
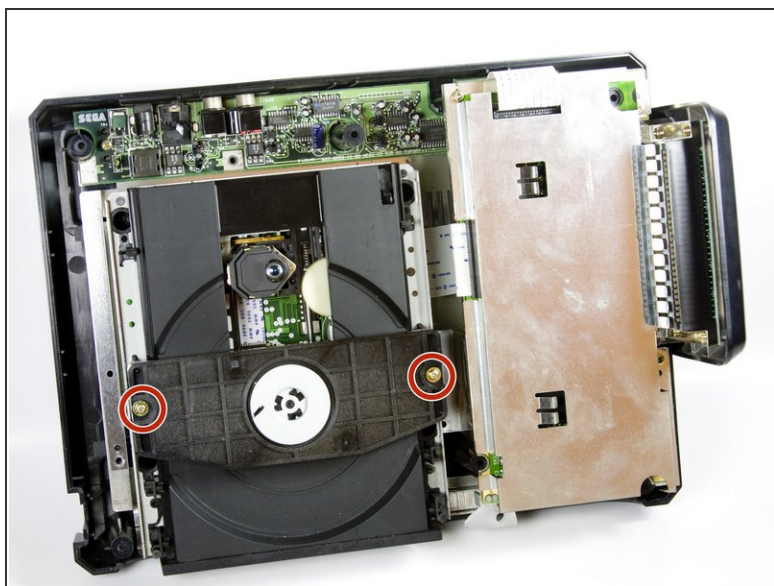
## Step 8 — CD Tray



- Remove metal plate by unscrewing the three screws with the Phillips head screwdriver and then lifting the plate.
- The three screws are shown on the diagram.

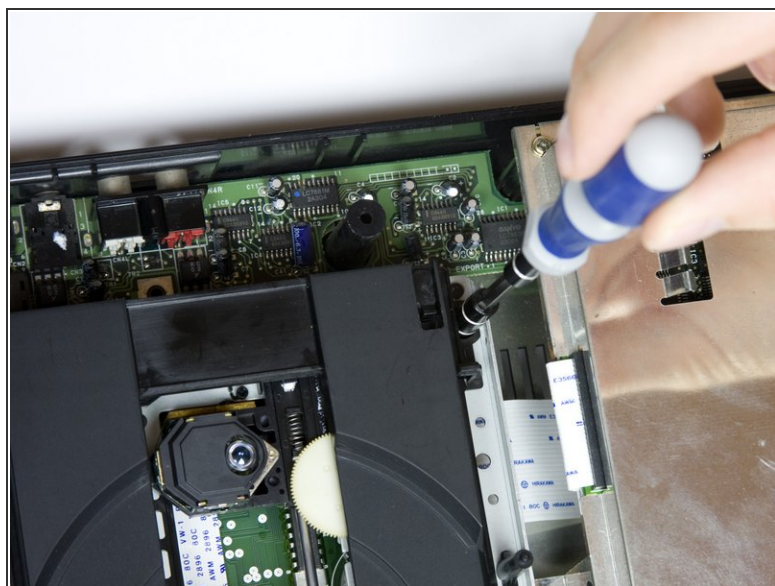
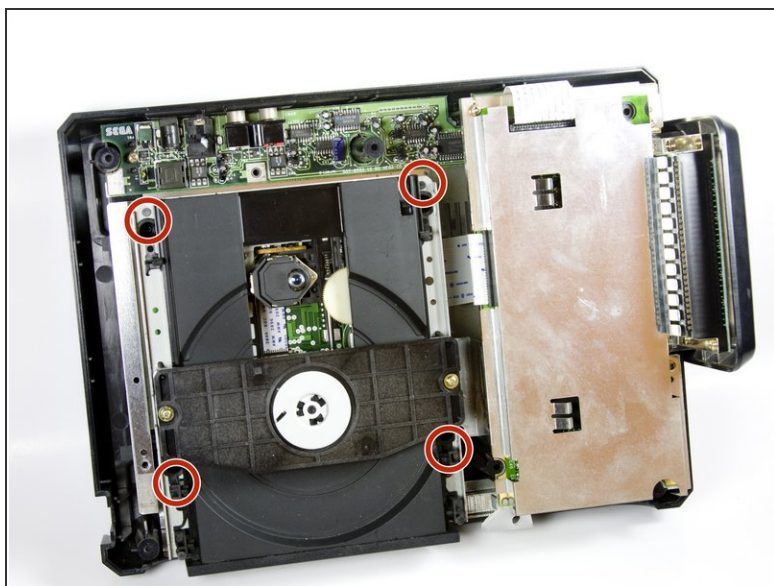


## Step 9



- Remove the two screws from the plastic bar.
- The two screws are shown pictured.

## Step 10



- To remove the CD tray
- Remove the four screws with the Phillips head screwdriver.

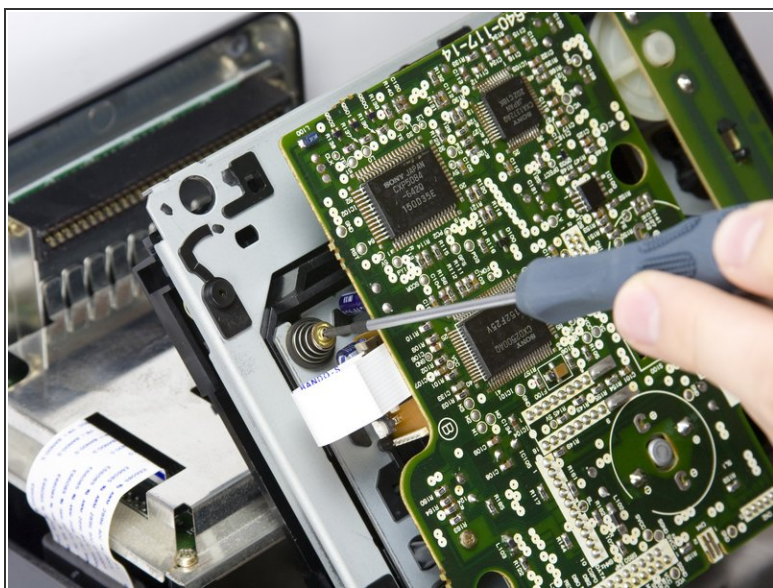
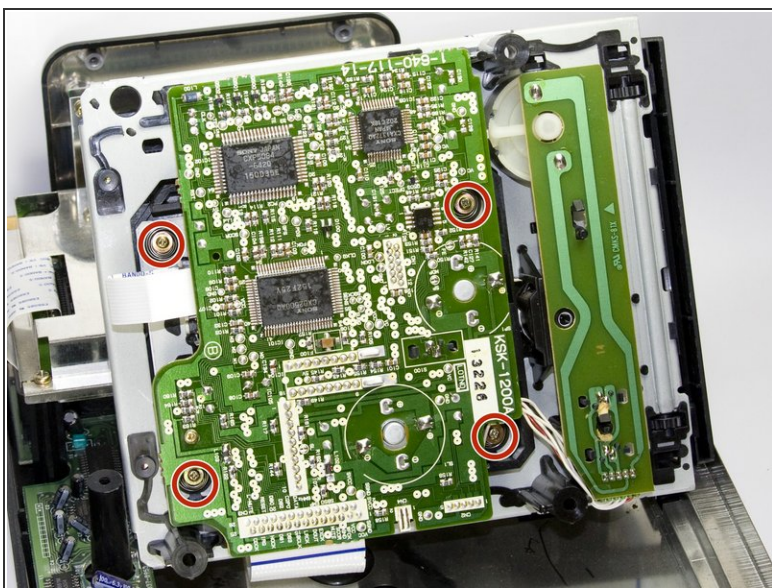


## Step 11



- Carefully unplug the wire connected to optical reader.

## Step 12



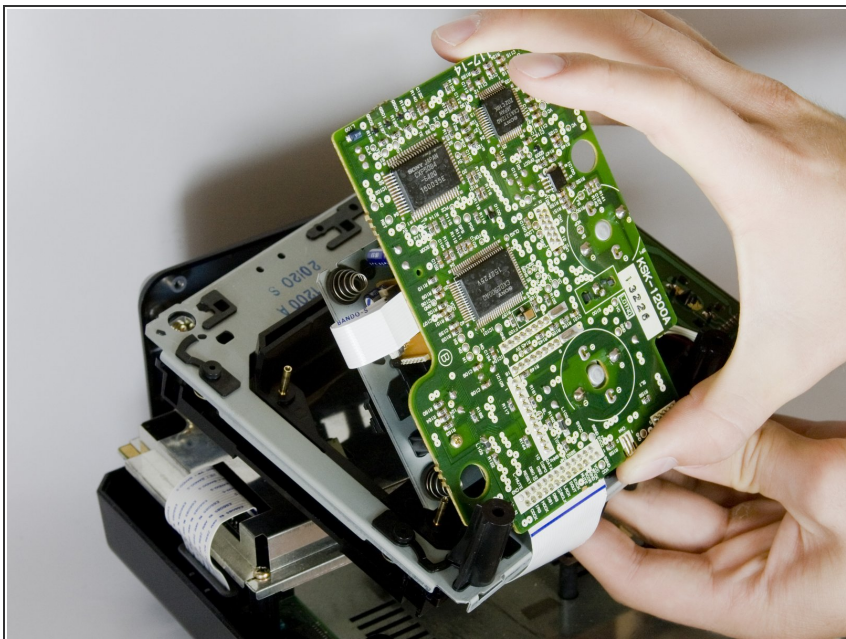
- Remove the four screws on the underside of the CD tray with a small Phillips head screwdriver.
- The four screws are highlighted on the diagram.



The four springs below the circuit board are attached to the screws, so be careful not to lose them when you remove the screws.



## Step 13



- Carefully remove the CD tray from circuit board.

To reassemble your device, follow these instructions in reverse order.