



# Canon PowerShot SX280 HS AF Assist Lamp Replacement

In this guide, you will learn how to remove and replace the AF assist lamp on the Canon PowerShot SX280 HS.

Written By: Osmand A Munoz



---

## INTRODUCTION

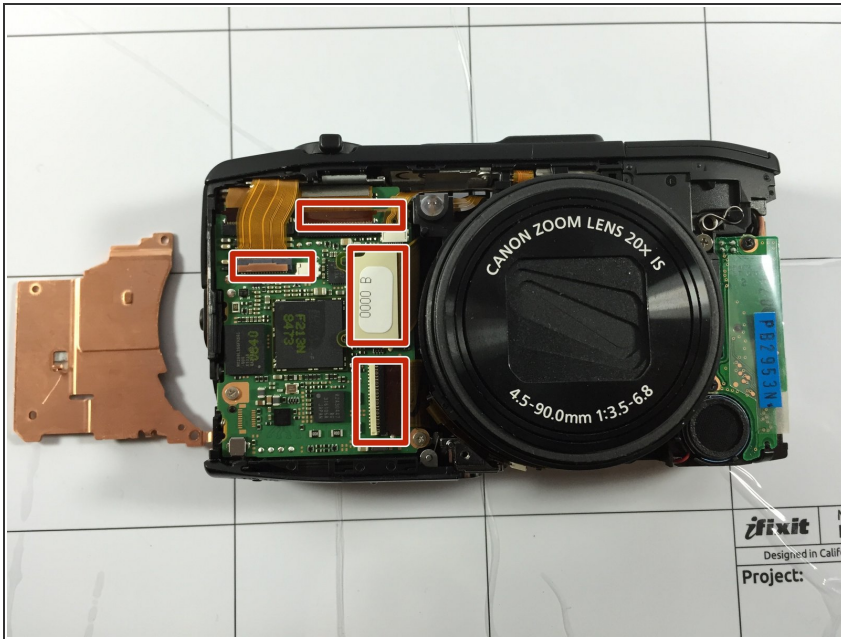
Refer to this guide if you are having trouble focusing your Canon PowerShot SX280 HS. The AF assist lamp helps to focus the camera when in dimly lit areas, and this guide instructs you on how to replace it. The Essential Electronics Toolkit is required for this replacement.



### TOOLS:

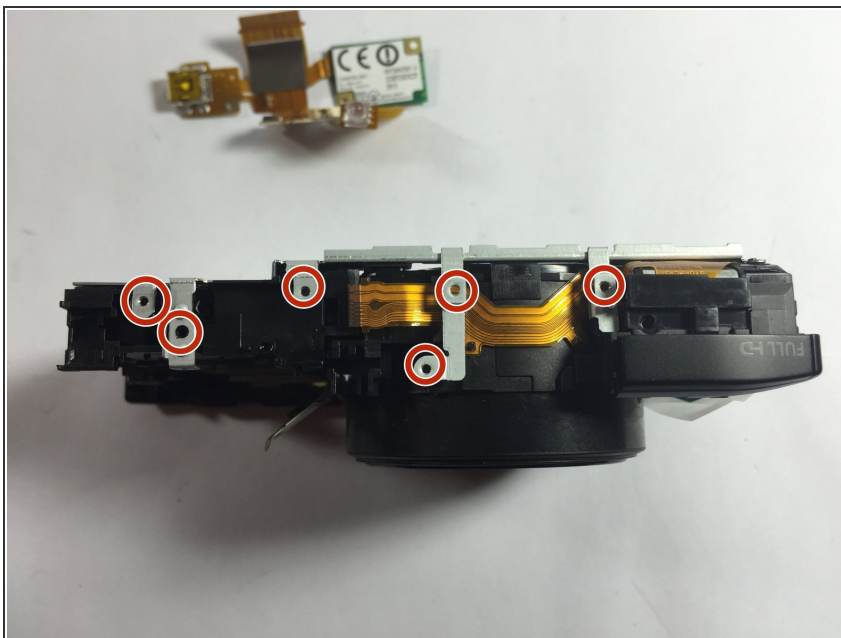
- [Essential Electronics Toolkit](#) (1)
-

## Step 1 — AF Assist Lamp



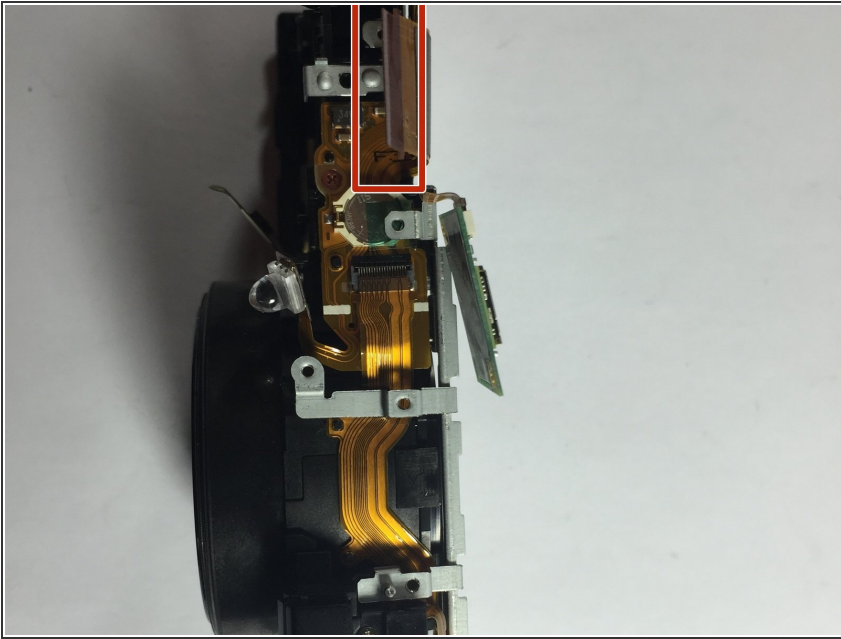
- Remove the outer covering from the camera.
- Remove the tabs from the motherboard.

## Step 2



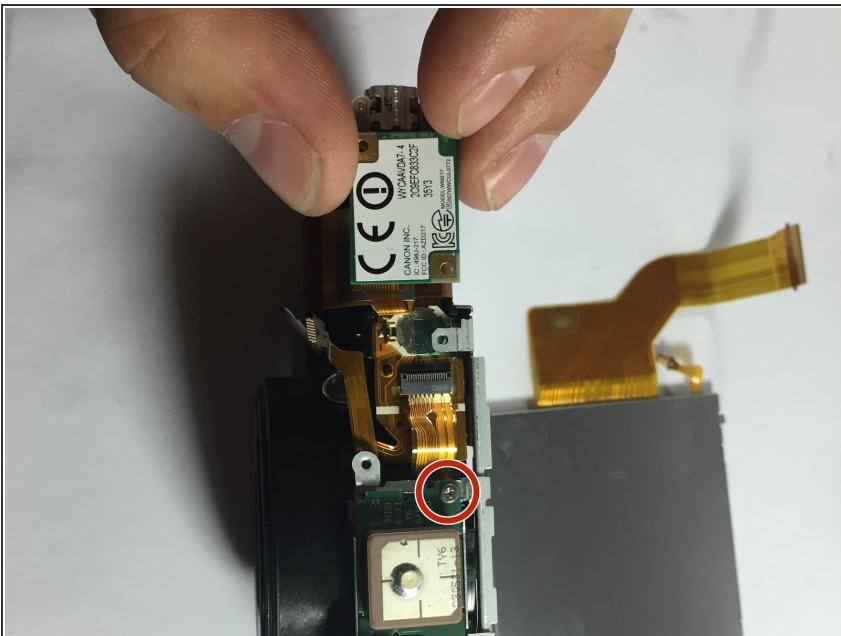
- Remove the screws on top of the camera.

### Step 3



- Remove the tabs which will slide out with a chip. The chip is attached to the GPS.

### Step 4



- Remove the wifi chip.
- Remove the screw.



## Step 5



- Remove all the screws around the lamp. This releases the lamp.

To reassemble your device, follow these instructions in reverse order.