



# Nikon Coolpix L820 Flash Bulb Replacement

This guide will lead you through the process of accessing and replacing the flash bulb.

Written By: Marc



---

## INTRODUCTION

The flash is an integral component to taking great photographs. This guide will lead you through the necessary steps to replace a damaged bulb.

---



### TOOLS:

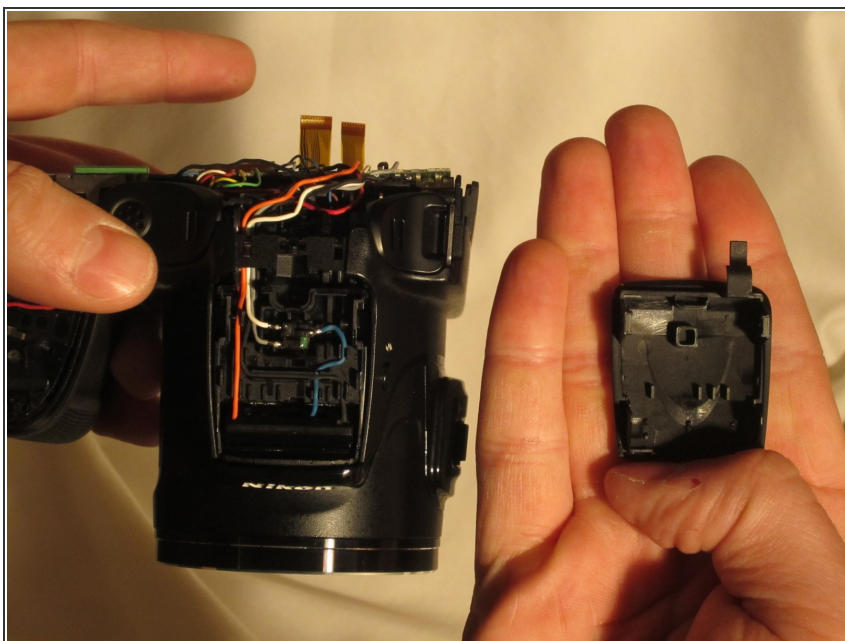
- [Phillips #0 Screwdriver](#) (1)
-

## Step 1 — Flash Bulb



- Begin by removing these two screws.

## Step 2



- From here, the panel covering the flash bulb can be removed.



### Step 3



- Once the panel has been removed, the bulb is accessible and can be replaced.

To reassemble your device, follow these instructions in reverse order.