



Nikon Coolpix L820 LCD Replacement

The LCD screen is an essential component of a...

Written By: Lucas Otto



INTRODUCTION

The LCD screen is an essential component of a camera. If the LCD screen stops working, the camera can no longer be used. In this repair guide, you will learn how to replace the LCD screen on the Nikon Coolpix L820 camera.

TOOLS:

Spudger (1)

Phillips #0 Screwdriver (1)

Tweezers (1)

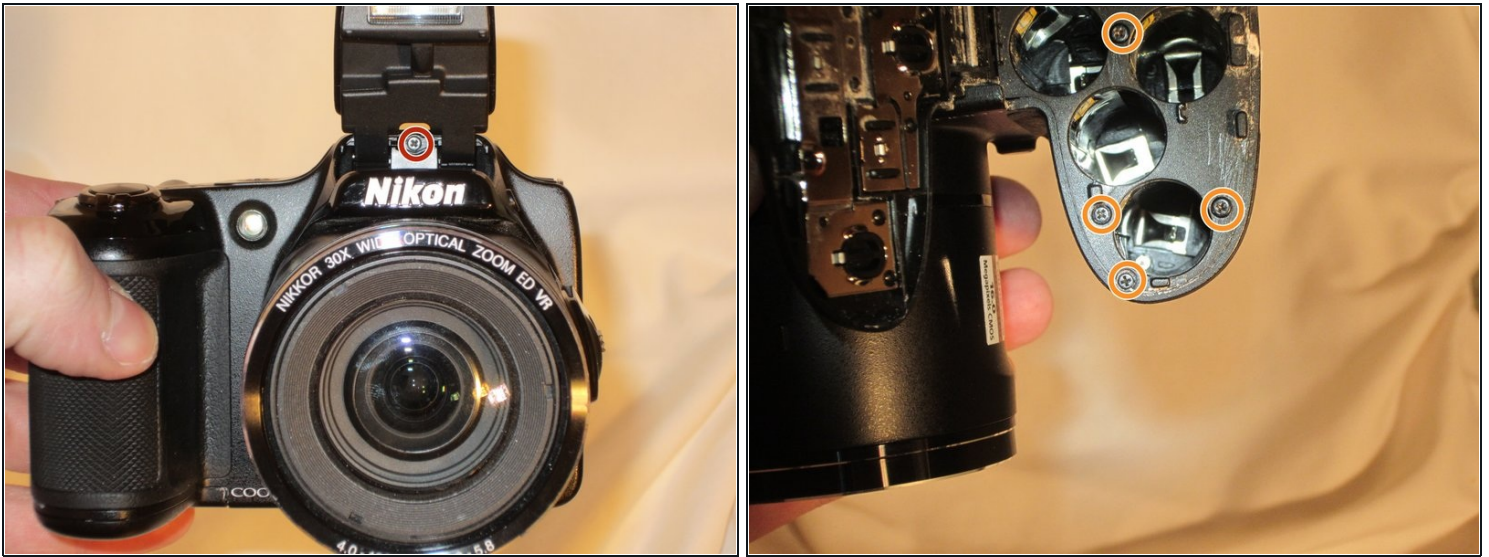
Step 1 — Settings Buttons



 Remove the battery before beginning.

- Use a Phillips #0 screwdriver to remove the screws on the front casing. There are ten screws, three on the left side, two on the bottom, and one on the right side of the camera.

Step 2



- Remove the front top Phillips screw with the screwdriver.
- Open the empty battery slot on the bottom of the camera, revealing four additional screws.
- Unscrew the four Phillips screws with the screwdriver.

Step 3

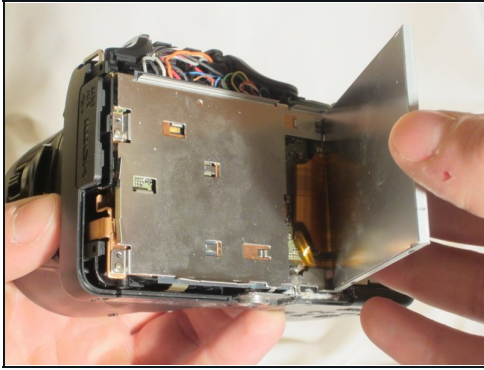


- Using the spudger, move around the casing, carefully separating the rear housing from the camera assembly.

⚠ Be sure to only apply pressure to the casing panels and not the sensitive internal electronics.

- Once the rear housing is separated, the settings buttons will be accessible for replacement.

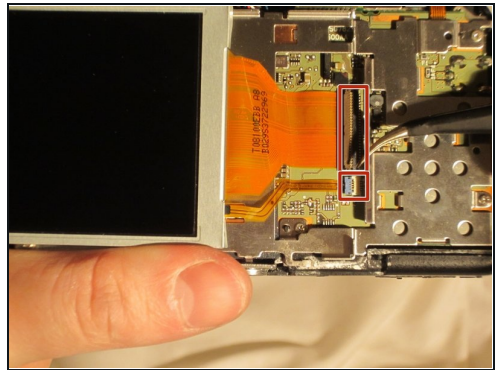
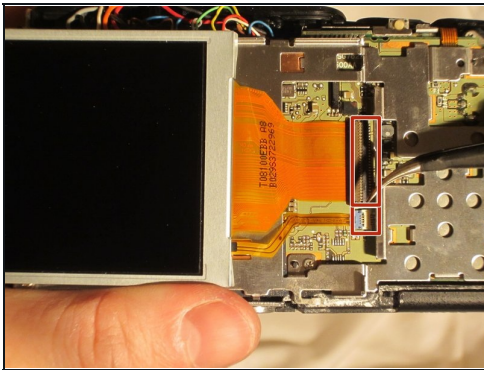
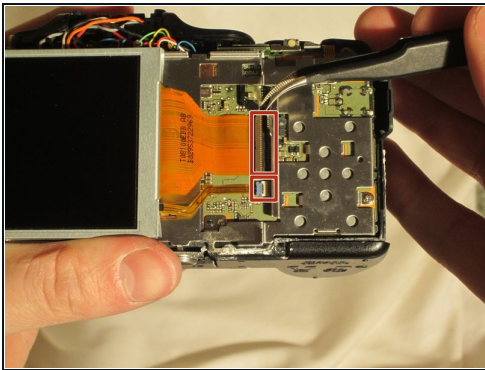
Step 4 — LCD screen



- Remove the front casing to expose the LCD screen and wires.

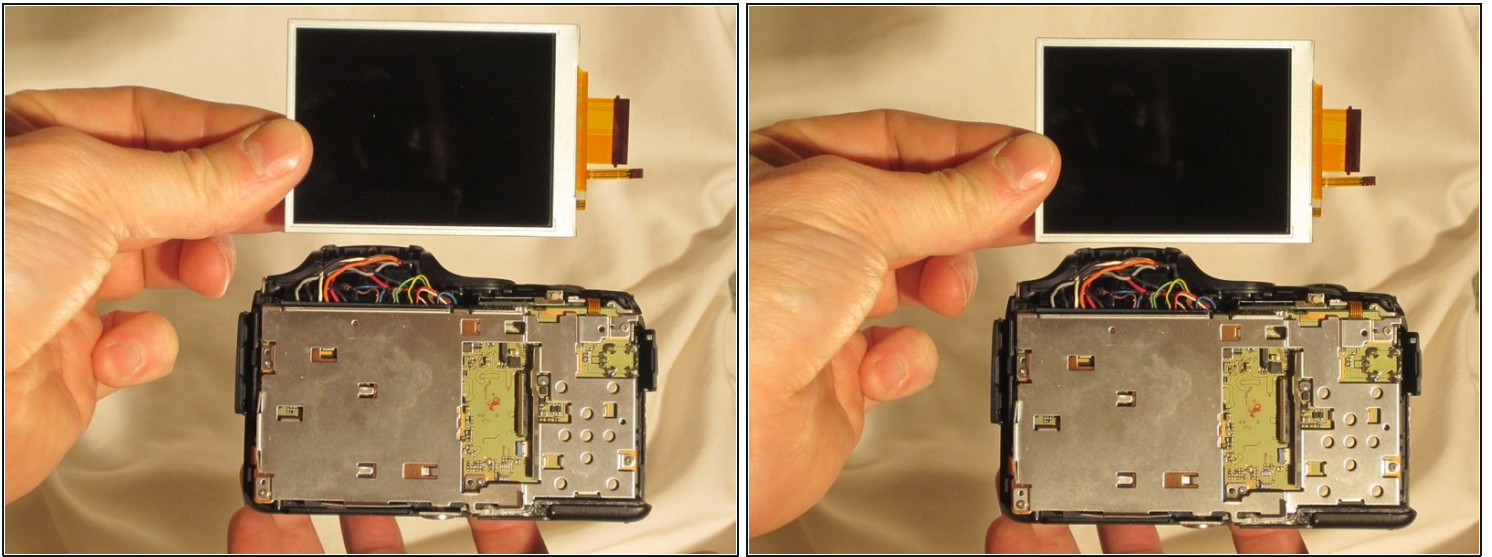
⚠ Do not damage the exposed wires.

Step 5



- Using the tweezers, lift the hinges connecting the two ribbon wires to the camera.

Step 6



- Once the flexible ribbon wires are disconnected, remove the LCD screen.

To reassemble your device, follow these instructions in reverse order.