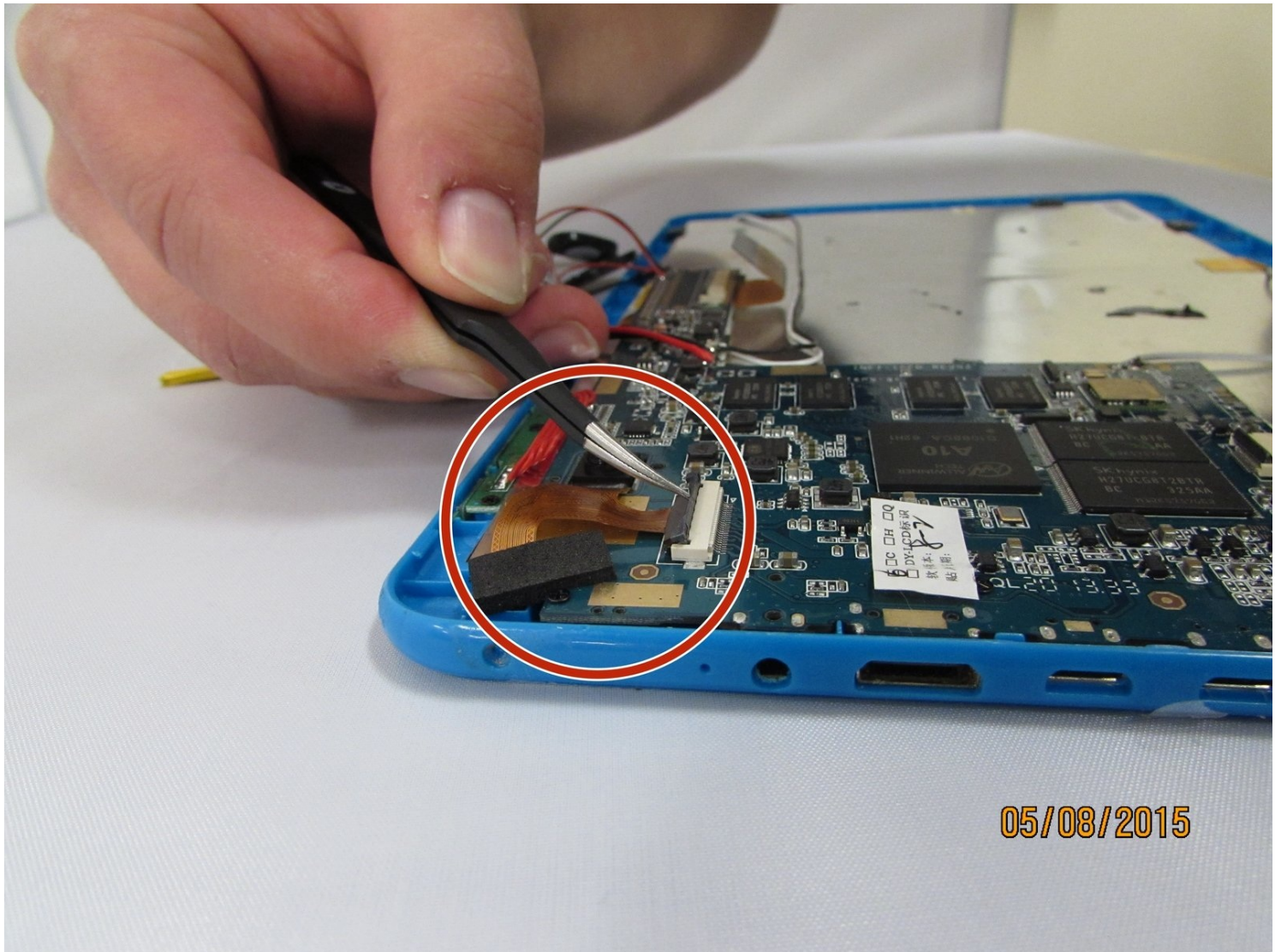




Visual Land Prestige 10 Front Facing Camera Replacement

Written By: Connor Reese



TOOLS:

Magnetic Project Mat (1)
Phillips #00 Screwdriver (1)
iFixit Opening Tool (1)
Spudger (1)

Step 1 — Back Case



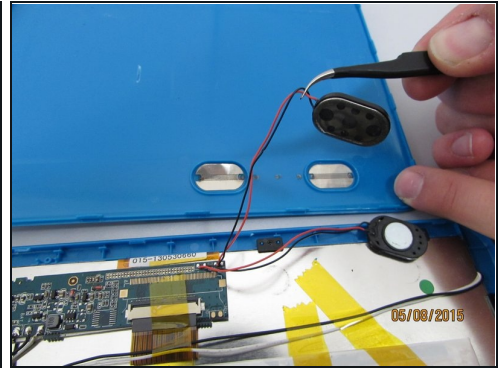
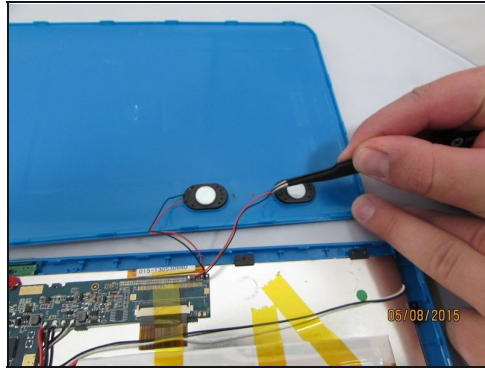
- Remove the 3mm screws from bottom of tablet with the precision screwdriver and place on [magnetic mat](#). label where they came from.
- ① All screws throughout this guide are the same 3mm size.

Step 2



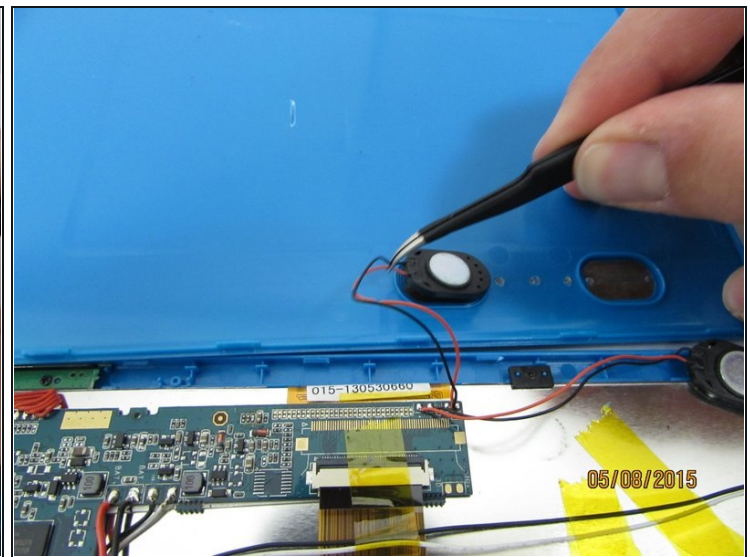
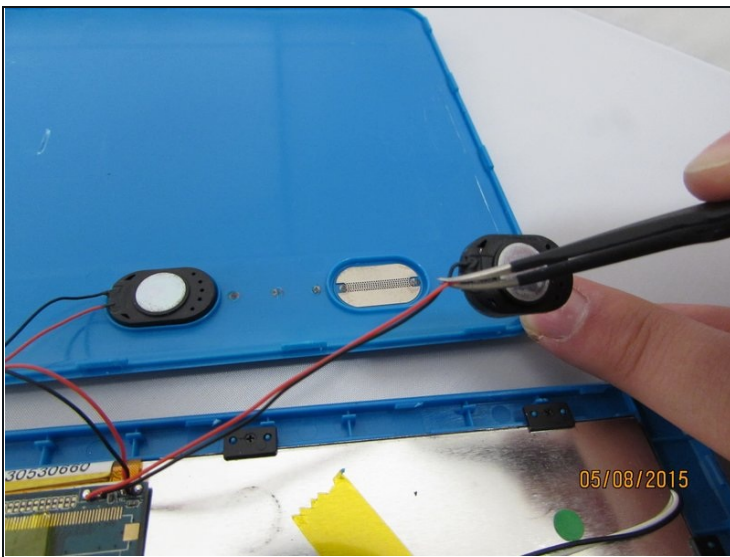
- Using the spudger, create a small opening to be used to open the back case.
- While holding the case open, insert the plastic opening tool to get a larger opening.
- Once you have a slight opening, insert the spudger and work around the edges, separating the back plate from the front.

Step 3



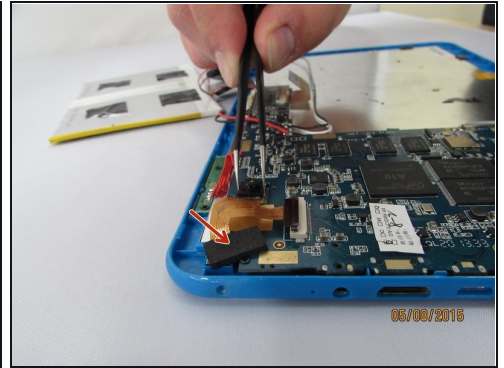
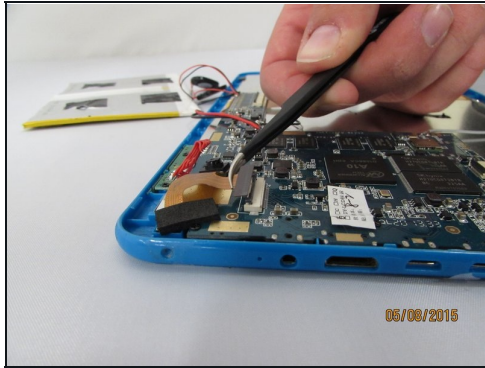
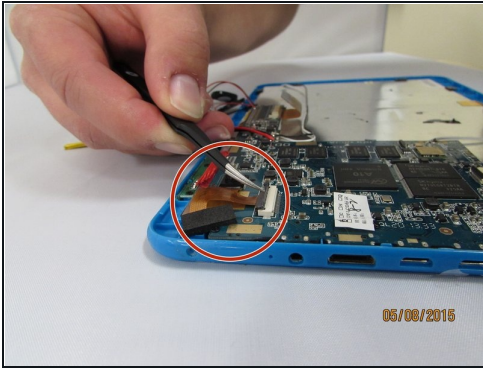
- now that the case is open, carefully remove the speakers and set aside.

Step 4



- Gently remove the speakers from the back case with [tweezers](#) and set the case aside.

Step 5 — Front Facing Camera



- Locate the Camera Housing. Gently grip and lift the small black tab until you feel an audible click.
 - Gently remove the connector by pulling straight out, gripping the black connector head or as close as possible.
 - Gently grip and pull up the front camera, covered by protective adhesive foam.
 - Set aside the Camera housing.
-

To reassemble your device, follow these instructions in reverse order.